

# Converging A.I. and IoT: Correlated Data Models (Sensor Data and Other Data Sets) for AI Insights



**Strathmore**  
UNIVERSITY



Mr. Leonard Mabele

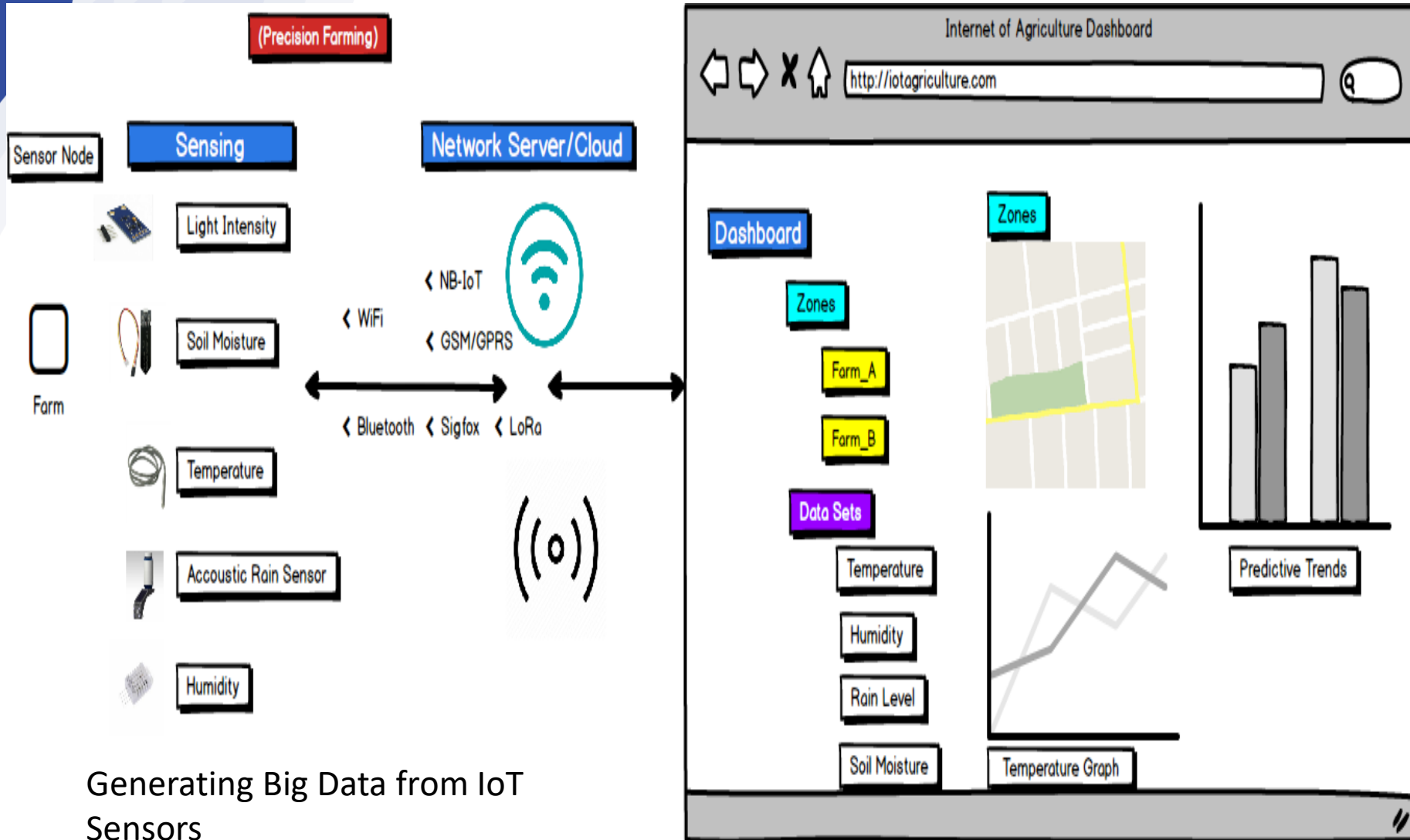
**Manager, IoT Research**

**Telecommunications Research Fellow**

**@iLabAfrica Research Centre,  
Strathmore University**



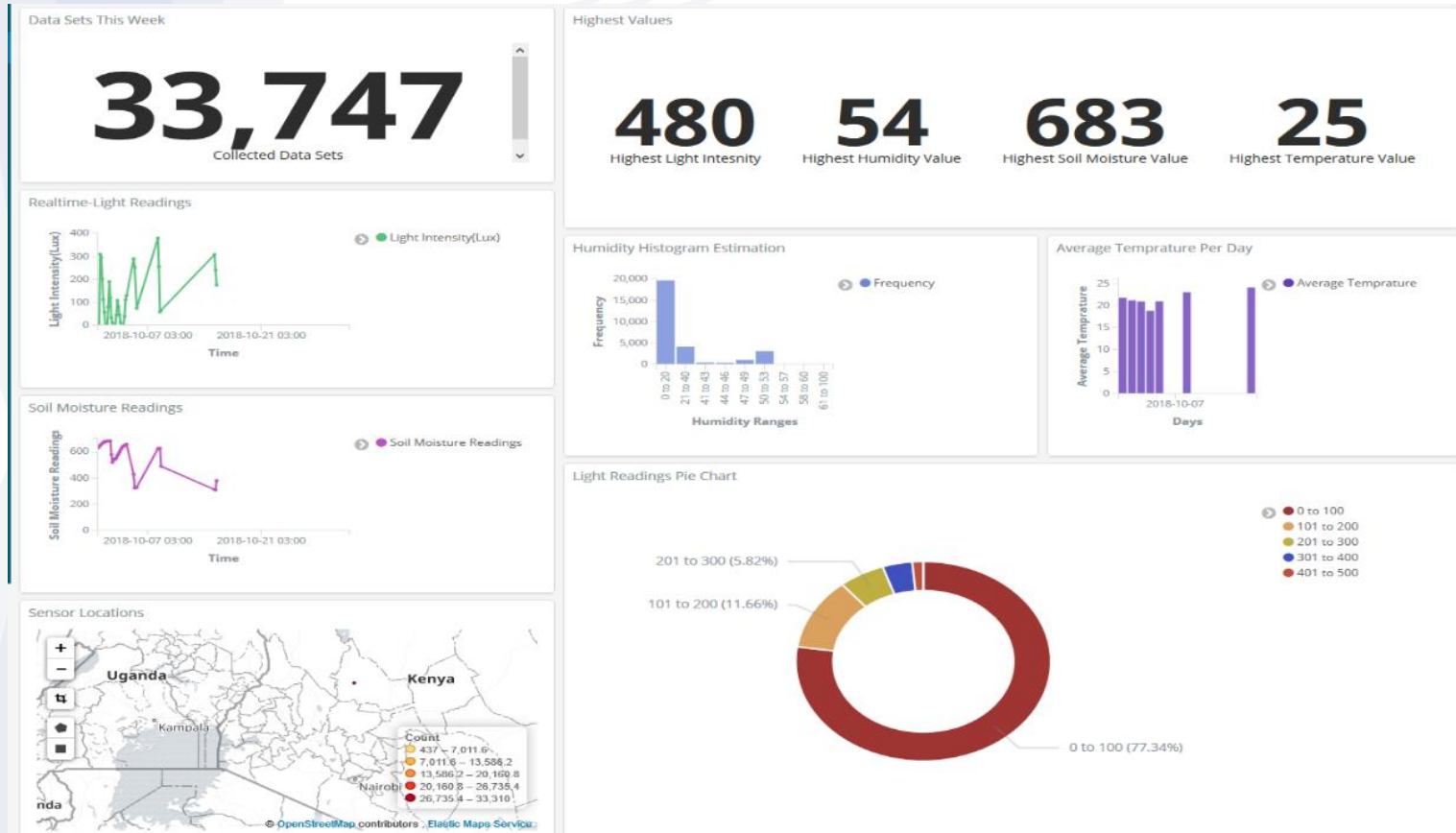
# Internet of Things (The Farm Architecture)



Generating Big Data from IoT Sensors



# Visualising the Data



Translating the data to useful Information



# Learning the Devices

IoT Device Management Dashboard

http://devicemanagementsystem.com

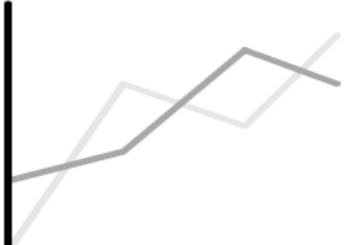
### Dashboard

**Devices**

No. of Devices:

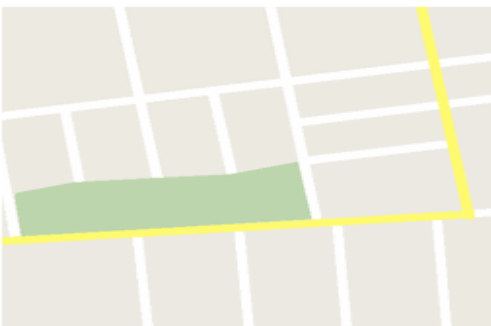
Select Device Location:

ON/OFF



**Gateway**

Select Gateway ID:



Gateway Map

### Gateway Information

Modulation Scheme:

Spreading Factor:

Bandwidth:

Airtime:

Coding Rate:

RSSI:

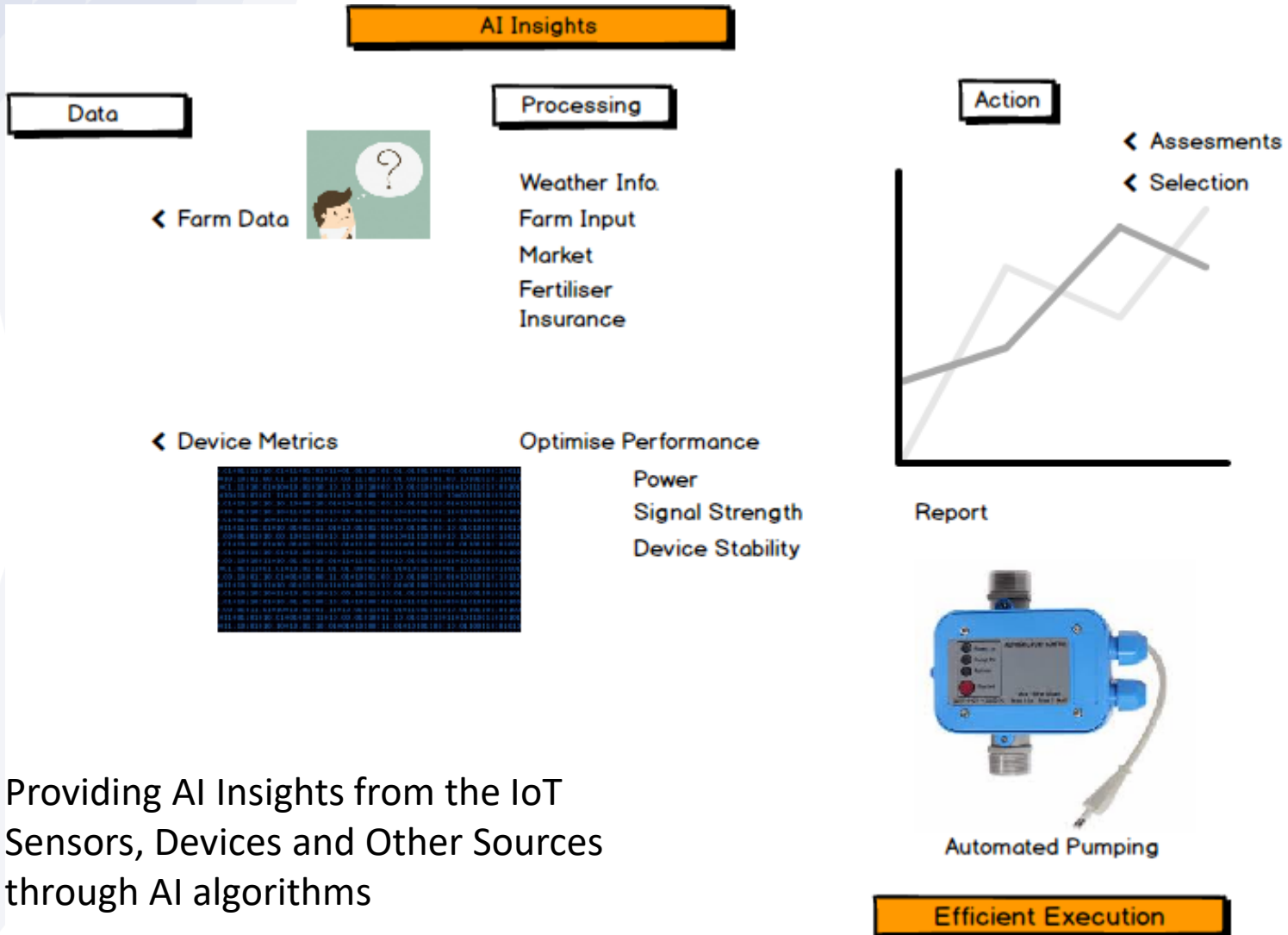
SNR:

Device Address:

Frequency:



# AI Insights – Correlated Data Models



Providing AI Insights from the IoT Sensors, Devices and Other Sources through AI algorithms