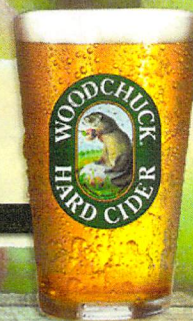


THE CORE.

THE OFFICIAL BLOG OF WOODCHUCK. HARD CIDER.

[ABOUT US](#) | [CIDER](#) | [LOCATOR](#) | [NEWS & EVENTS](#) | [FAN CLUB](#) | [GEAR](#)



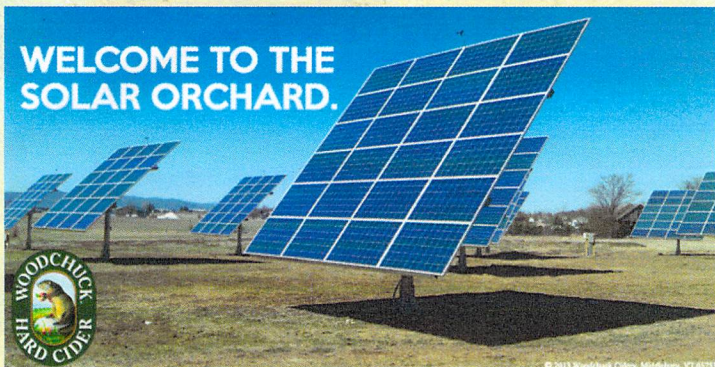
LATEST ENTRIES

Posted on April 18, 2013

[← Previous](#)

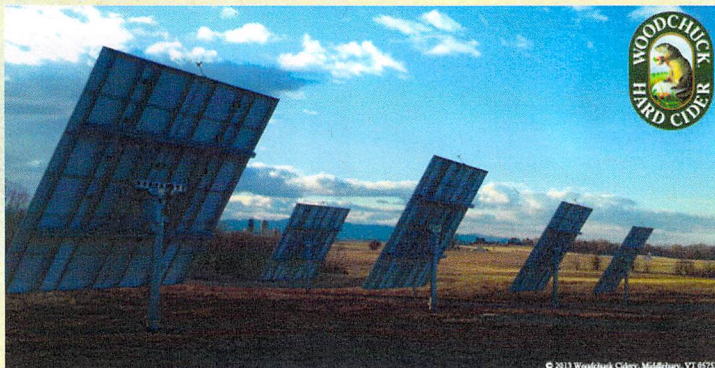
[Next →](#)

New Woodchuck Orchard Harvests the Sun



In the central Vermont farm town of Bridport, a new orchard is taking root. The 1.5 acre orchard sits about 10 miles from the Woodchuck Cidery in Middlebury, Vermont. Its crop is electricity, and its food source is the sun. It turns lovely sunny day rays into fast moving electrons.

Woodchuck is the 'off-taker' of that sweet renewable nectar. The 26 solar trackers are expected to produce 210,000 kWh of electricity a year. That equates to between 10% and 15% of our power usage. [AllEarth Renewables](#) in Williston, Vermont makes the solar trackers, which through the wonders of GPS, follow the sun throughout day. They say that tracker technology yields up to 45% more power production than stationary panels. Sweetness.



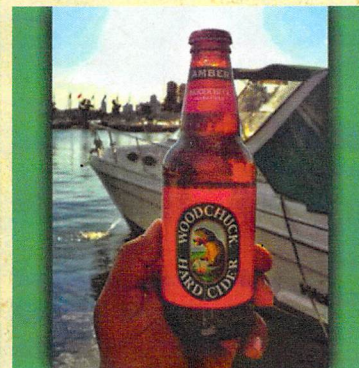
SUBSCRIBE!

Subscribe to The Core to receive the latest updates via e-mail!

Your email here

[Subscribe](#)

WOODCHUCK® INSTAGRAM



CATEGORIES

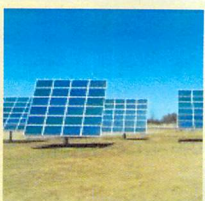
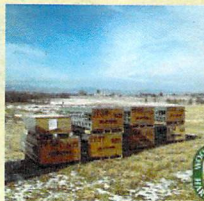
- » [Cider Category](#) (1)
- » [Cider Maker's Notebook](#) (2)
- » [Events](#) (4)
- » [Inside the Cidery](#) (9)
- » [Our Cider](#) (4)
- » [Recipes](#) (4)
- » [Woodchuck Community](#) (7)

ARCHIVES

- [June 2013](#)
- [May 2013](#)
- [April 2013](#)
- [March 2013](#)
- [February 2013](#)
- [January 2013](#)

Sign Up!

Due to a lack of space in the land surrounding our cidery, the solar array was built on farmland owned by longtime dairy farmer Harold Giard and his wife Shirley. Many farmers are turning to renewable energy development as a way to diversify how their land is used. It is becoming a more common sight in Vermont's working landscape, as generations old farms fight to stay in business amid unstable crop and dairy prices. Mr. Giard, who supports more diversified agriculture, plans to continue haying the field where our solar power is being harvested.



The construction of the solar orchard took place over the course of a couple weeks in late February and early March. A project of this size actually goes up pretty fast! By late March electrons were flowing and so began our journey into solar power.



← Previous

Next →

Partnering with a local renewable energy company and a local farm has been a great experience. These kinds of partnerships are what make our home state tick. It's a community that works together to achieve common goals. We couldn't be more proud.



Speaking of partnerships... We also participate in the [Cow Power](#) program run by [Green Mountain Power](#) here in Vermont. It turns cow manure into energy. We pay a premium on 25% of our power to help fund that program. Between the two renewable energy sources, we are closing in on 40% renewable energy use.

Be sure to head over to our [Facebook](#) page and sign up for our e-newsletter. For every 'like' and sign up we get, [we are planting a tree and a donating dollar](#) to two great organizations making a difference.

f Share

f Like 54 Send

This entry was posted in [Woodchuck Community](#) and tagged [AllEarth Renewables](#), [cider](#), [Earth Week](#), [environment](#), [Hard Cider](#), [renewable](#), [Solar Orchard](#), [sustainable](#), [woodchuck](#) by [Woodchuck](#). Bookmark the [permalink](#).

← Previous

Next →

[FAQS](#) | [CAREERS](#) | [CONTACT US](#) | [PRIVACY](#) | [TERMS](#)

© 2013 WOODCHUCK CIDERY, ALL RIGHTS RESERVED