



The Lynde and Harry
BRADLEY FOUNDATION
2016 Report to Wisconsin

Bradley Foundation



Board of Directors of The Lynde and Harry Bradley Foundation, Inc.

Seated, left to right:

David V. Uihlein, Jr., Vice Chairman
Dennis J. Kuester, Chairman
Michael W. Grebe, President & CEO
Cleta Mitchell, Secretary

Standing, left to right:

Curt S. Culver
Richard W. Graber
Victor Davis Hanson
George F. Will
Diane M. Hendricks
Terry Considine
J. Arthur Pope
Patrick J. English
Robert P. George

Bradley Foundation

Officers

Dennis J. Kuester, Chairman
David V. Uihlein, Jr., Vice Chairman
Richard W. Graber, President and Chief Executive Officer
Cleta Mitchell, Secretary
Daniel P. Schmidt, Vice President for Program
Jessica F. Dean, Vice President for External Relations
Cynthia K. Friauf, Vice President for Finance, Treasurer, and Assistant Secretary
R. Michael Lempke, Vice President for Investments
Terri L. Famer, Vice President for Administration and Assistant Secretary
Mandy L. Hess, Controller and Assistant Treasurer

Program Staff

Daniel P. Schmidt, Vice President for Program
Dianne J. Sehler, Senior Program Officer
Alicia L. Manning, Program Officer
Janet F. Riordan, Program Officer
Jill M. Budny, Program Officer
William J. Bergeron, Librarian
Dionne M. King, Senior Program Assistant
Tris E. Withington, Program Assistant

External Relations Staff

Jessica F. Dean, Vice President for External Relations
Benjamin M. Hannemann, Marketing and Communications Manager
Kala Hill, Development Coordinator

Finance and Investment Staff

Cynthia K. Friauf, Vice President for Finance
R. Michael Lempke, Vice President for Investments
Mandy L. Hess, Controller
Laura M. Davis, Senior Accountant
Renee L. Krebs, Grants Administrator
Tierney Kamine, Accounting Assistant

Administrative Staff

Terri L. Famer, Vice President for Administration
Carol A. Brick, Executive Assistant
Diane M. Lask, Receptionist/Clerical Assistant
Susan R. Millard, Office Assistant
Dennis H. Grueneberg, Operations

Table of Contents

A Letter to Our Community	5
Our History.....	6
2016 Grants Awarded	7
Grantmaking Policies	16
Application Procedure	17



The Lynde and Harry Bradley Foundation Staff

A Letter to Our Community

The Bradley Foundation is institutionally “at home” in Milwaukee, where our donors, Lynde and Harry Bradley, established the family legacy that it is our trust to preserve. There are countless national and international opportunities for philanthropy – and many of them deserve the attention of The Bradley Foundation. However, it is from 1241 North Franklin Place, Milwaukee, Wisconsin – our home in our community – that The Bradley Foundation views the world.

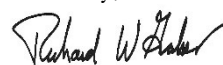
The Foundation grants within our own community account for well over a third of our total giving since our inception as a private foundation in 1985. These grants are assiduously researched by staff, thoroughly reviewed by a committee of local directors and presented to the full Board for final approval – and they include many of our largest and most long-term grantees, those closest and best known to us. They are a critical component of the Foundation’s philanthropy.

We apply what we learn from our national and international programs to Milwaukee and Wisconsin so that the community receives attention and advice from the world’s best thinkers. We think that is a fair trade, for we often find ourselves providing the experience and wisdom of our community to a world that has much to learn from Milwaukee and Wisconsin.

This report provides information concerning all of our local grants during 2016, as we carry on the traditional philanthropy of the Bradley brothers in their home town and their home state. These grants focus on preserving and enhancing our city’s civic and cultural identity; preserving the role of families in our society; reforming education; and promoting civic growth and prosperity. The grants support community-based institutions of civil society, such as neighborhood organizations, schools and congregations. They also help maintain an infrastructure of services and cultural opportunities in our community that perpetuate our donors’ enthusiasm for Milwaukee and Wisconsin and their aspirations for our quality of life. Awards of \$8.2 million for Milwaukee and Wisconsin in 2016 raised the Foundation’s in-state giving to approximately \$357 million in the 32 years since we were established.

The officers, directors and staff of The Lynde and Harry Bradley Foundation are mindful of and grateful for our institutional roots in this community, and there is no aspect of our philanthropy that we are prouder of, or that we feel more responsibility for, than the local grants listed in this report.

Sincerely,



Richard W. Graber, President
The Lynde and Harry Bradley Foundation
April 2017

Our History

In 1903, Lynde and Harry Bradley established a new business in Milwaukee, Wisconsin. It took courage and confidence for them to risk resources in a new venture, based only on their judgment of what was and their vision of what could be. The Bradleys' confidence was bolstered by the knowledge that in America, not only were they free to start a business, they could also begin again if they failed. The Bradleys, however, would not fail. Their business grew to become the internationally recognized Allen-Bradley Company.

When the Allen-Bradley Company was acquired by Rockwell International Corporation in 1985, a significant portion of the proceeds was dedicated to establishing The Lynde and Harry Bradley Foundation. Although it has no direct ties to the Allen-Bradley Company, the purpose of the Foundation is to commemorate Lynde and Harry Bradley by preserving and extending the principles and philosophy by which they lived and upon which they built their company. As their efforts succeeded, their business grew and eventually extended far beyond its Milwaukee headquarters. Lynde and Harry Bradley remained devoted to the city where they began their enterprise and in which they lived and worked for so many years. Thus, The Lynde and Harry Bradley Foundation is proud to continue its commitment to improving the quality of life in the Milwaukee metropolitan area and throughout southeastern Wisconsin.

The Bradleys lived and worked according to several philosophical principles. They believed that, over time, the consequences of ideas were more decisive than the force of political or economic movements. They recognized the interdependence of human endeavors – cultural, educational, philosophical, economic – and they rejected exclusionary emphasis on any single element. The brothers had an abiding belief in the dignity and decency of each person. They felt that only in an environment of political and economic freedom could individuals develop their talents, hone their skills and intellects, and contribute to the improvement of the human condition. The success of the Allen-Bradley Company stands as eloquent testimony to the enduring quality of these principles.

The Bradley brothers were committed to preserving and defending the tradition of free representative government and private enterprise that has also enabled the American nation and, in a larger sense, the entire Western world to flourish intellectually and economically. The Bradleys believed that the good society is a free society. The Lynde and Harry Bradley Foundation envisions a nation invigorated by the principles and institutions that uphold our unalienable rights to life, liberty and the pursuit of happiness. Its mission is to restore, strengthen and protect the principles and institutions of American exceptionalism. Its programs are guided by the following principles: fidelity to the Constitution, with its principles of limited government, federalism, separation of powers, and individual liberties; commitment to free markets that allow for private enterprise, entrepreneurship and voluntary exchange within the rule of law; commitment to the fundamental institutions of civil society that cultivate individuals capable of self-governance; and dedication to the formation of informed and capable citizens.

2016 Grants Awarded



ABOVE THE CLOUDS

Milwaukee, WI

To support general operations..... 15,000



ACTS HOUSING

Milwaukee, WI

To support general operations..... 90,000



ALMA CENTER

Milwaukee, WI

To support general operations..... 50,000



AMERICAN MAJORITY

Purcellville, VA

To support a Wisconsin chapter 220,000



ARCHDIOCESE OF MILWAUKEE

Milwaukee, WI

To support the Pallium Lecture series 10,000



ASSET BUILDERS OF AMERICA

Madison, WI

To support general operations..... 40,000



BEL CANTO CHORUS OF MILWAUKEE

Milwaukee, WI

To support general operations..... 20,000



BUSINESS AND ECONOMICS ACADEMY OF MILWAUKEE

Jupiter, FL

To support the Office for the Advancement of Free Enterprise 200,000

To support the merit pay program for teachers..... 15,000



CARTHAGE COLLEGE

CARTHAGE COLLEGE

Kenosha, WI

To support the Humanities Citizenship Initiative 75,000



CELEBRATE CHILDREN FOUNDATION

Madison, WI

To support a report on families..... 100,000



CENTER FOR NEIGHBORHOOD ENTERPRISES

Washington, DC

To support the Milwaukee Violence Free Zone Initiative 190,000



CITY ON A HILL

Milwaukee, WI

To support a capital campaign..... 200,000

To support general operations..... 30,000

2016 Grants Awarded



CITY YEAR
Milwaukee, WI
To support City Year Milwaukee100,000



COMMUNITY WAREHOUSE
Milwaukee, WI
To support general operations.....100,000



CONVERGENCE RESOURCE CENTER
Milwaukee, WI
To support general operations.....20,000



CRISTO REY JESUIT HIGH SCHOOL
West Milwaukee, WI
To support general operations.....100,000



DISCOVERY WORLD
Milwaukee, WI
To support general operations.....90,000



DIVINE SAVIOR HOLY ANGELS HIGH SCHOOL
Milwaukee, WI
To support participation in the
Milwaukee School Choice Program.....20,000



DOMINICAN HIGH SCHOOL
Whitefish Bay, WI
To support participation in the
Milwaukee Parental Choice Program20,000



EASTBROOK ACADEMY
Milwaukee, WI
To support general operations.....20,000



EPIC CENTER COMMUNITY ORGANIZATION
Milwaukee, WI
To support general operations.....10,000



FELLOWSHIP OF CHRISTIAN ATHLETES
Pewaukee, WI
To support program activities.....25,000



FIRST STAGE CHILDREN'S THEATER
Milwaukee, WI
To support general operations.....20,000

2016 Grants Awarded



FLAGS FOR FALLEN MILITARY

Eden Prairie, MN

To support flag pole installation..... 4,000



FLORENTINE OPERA COMPANY

Milwaukee, WI

To support general operations..... 95,000



FRANKLIN CENTER FOR GOVERNMENT & PUBLIC INTEGRITY

Alexandria, VA

To support Wisconsin Watchdog 90,000



GREATER MILWAUKEE FOUNDATION

Milwaukee, WI

To support the Nonprofit Management Fund..... 60,000



GUEST HOUSE OF MILWAUKEE

Milwaukee, WI

To support a capital campaign..... 15,910



HEALING CENTER

Milwaukee, WI

To support general operations..... 15,000



HISPANICS FOR SCHOOL CHOICE

Milwaukee, WI

To support general operations..... 60,000



HOPE STREET MINISTRIES

Milwaukee, WI

To support general operations..... 25,000



JOHN K. MACIVER INSTITUTE FOR PUBLIC POLICY

Madison, WI

To support general operations..... 170,000



LAKELAND UNIVERSITY

Plymouth, WI

To support a Financial Fitness course 30,000

To support Teaching Economics in American History 75,000



LEAGUE OF AMERICAN ORCHESTRAS

New York, NY

To support general operations..... 10,000



LIGHTHOUSE YOUTH CENTER

Milwaukee, WI

To support general operations..... 60,000



LITERACY SERVICES OF WISCONSIN

Milwaukee, WI

To support general operations..... 15,000

2016 Grants Awarded



LUCY BURNS INSTITUTE

Middleton, WI

To support program activities.....20,000



LUTHERAN URBAN MISSION INITIATIVE

Milwaukee, WI

To support general operations.....60,000



MARQUETTE UNIVERSITY HIGH SCHOOL

Milwaukee, WI

To support participation in the
Milwaukee Parental Choice Program20,000



MESSMER CATHOLIC SCHOOLS

Milwaukee, WI

To support the Building2Learn Consortium46,090
To support general operations at the three campuses200,000



MILWAUKEE CHAMBER THEATRE

Milwaukee, WI

To support general operations.....20,000



MILWAUKEE CHARTER SCHOOL ADVOCATES

Milwaukee, WI

To support general operations.....50,000



MILWAUKEE CHRISTIAN CENTER

Milwaukee, WI

To support general operations.....50,000



MILWAUKEE COLLEGE PREPARATORY SCHOOL

Milwaukee, WI

To support teacher merit pay.....50,000



MILWAUKEE COUNTY WAR MEMORIAL CENTER

Milwaukee, WI

To support general program activities.....30,000



MILWAUKEE DEVELOPMENT CORPORATION

Milwaukee, WI

To support a regional economic development initiative100,000



MILWAUKEE EXCELLENCE CHARTER SCHOOL

Milwaukee, WI

To support general operations.....50,000



MILWAUKEE HOMELESS VETERANS INITIATIVE

Milwaukee, WI

To support general operations.....10,000

2016 Grants Awarded



MILWAUKEE
JEWISH FEDERATION

MILWAUKEE JEWISH FEDERATION

Milwaukee, WI

To support a special exhibit 15,000



MILWAUKEE JOBSWORK

Milwaukee, WI

To support general operations..... 65,000



MILWAUKEE PUBLIC LIBRARY FOUNDATION

Milwaukee, WI

To support general operations..... 65,000



MILWAUKEE PUBLIC MUSEUM

Milwaukee, WI

To support general operations..... 150,000

To support a capital campaign..... 200,000



MILWAUKEE REPERTORY THEATER

Milwaukee, WI

To support general operations..... 100,000



MILWAUKEE RESCUE MISSION

Milwaukee, WI

To support general operations..... 30,000



MILWAUKEE SYMPHONY ORCHESTRA

Milwaukee, WI

To support general operations..... 325,000



MILWAUKEE YOUTH SYMPHONY ORCHESTRA

MILWAUKEE YOUTH SYMPHONY ORCHESTRA

Milwaukee, WI

To support general operations..... 15,000



MMAC COMMUNITY SUPPORT FOUNDATION

Milwaukee, WI

To support a special project 50,000



NATIVITY JESUIT ACADEMY

Milwaukee, WI

To support general operations..... 20,000



NEU-LIFE COMMUNITY RESOURCE CENTER

Milwaukee, WI

To support general operations..... 50,000



NEW BEGINNINGS ARE POSSIBLE

Milwaukee, WI

To support general operations..... 25,000

2016 Grants Awarded



NEW CONCEPT SELF DEVELOPMENT CENTER

Milwaukee, WI

To support the Milwaukee Fatherhood Initiative25,000

NEW CREATURES IN CHRIST OUTREACH MINISTRY

Milwaukee, WI

To support general operations.....25,000



NEW THREADS OF HOPE

Wauwatosa, WI

To support general operations.....30,000



OPERATION DREAM

Milwaukee, WI

To support general operations.....75,000



OPTIMIST THEATRE

Milwaukee, WI

To support Shakespeare in the Park.....10,000



PATHWAYS MILWAUKEE

Milwaukee, WI

To support capacity building.....60,000



PIANO ARTS OF WISCONSIN

Milwaukee, WI

To support general operations.....15,000



REBUILDING TOGETHER GREATER MILWAUKEE

Milwaukee, WI

To support general operations.....20,000



RISEN SAVIOR EVANGELICAL LUTHERAN CHURCH AND SCHOOL

Milwaukee, WI

To support outreach ministries.....60,000



RUNNING REBELS COMMUNITY ORGANIZATION

Milwaukee, WI

To support general operations.....110,000



SAFE FAMILIES FOR CHILDREN

Chicago, IL

To support general program activities in Milwaukee20,000



SALVATION ARMY OF GREATER MILWAUKEE

Wauwatosa, WI

To support general operations.....20,000



SAND COUNTY FOUNDATION

Madison, WI

To support general operations.....100,000

2016 Grants Awarded



SCHOOL CHOICE WISCONSIN

Brookfield, WI

To support general operations.....290,000



SCHOOLS THAT CAN MILWAUKEE

Milwaukee, WI

To support general operations.....125,000



SERENITY INNS

Milwaukee, WI

To support general operations.....20,000



SETON CATHOLIC SCHOOLS

Milwaukee, WI

To support general operations.....100,000



SILVER SPRING NEIGHBORHOOD CENTER

Milwaukee, WI

To support general operations.....20,000



SKYLIGHT MUSIC THEATRE

Milwaukee, WI

To support capital projects.....73,000

To support general operations.....65,000



SOAR OF RACINE

Racine, WI

To support general operations.....40,000



ST. JOAN ANTIDA HIGH SCHOOL

An International Baccalaureate World School

ST. JOAN ANTIDA HIGH SCHOOL

Milwaukee, WI

To support participation in the Milwaukee Parental Choice Program20,000



ST. MARCUS LUTHERAN CHURCH AND SCHOOL

Milwaukee, WI

To support general operations.....50,000



ST. THOMAS MORE HIGH SCHOOL

Milwaukee, WI

To support the capital campaign120,000

To support general operations.....20,000



SUMMIT EDUCATIONAL ASSOCIATION

Milwaukee, WI

To support general operations.....20,000



TEACH FOR AMERICA

Milwaukee, WI

To support the Milwaukee program150,000

2016 Grants Awarded



TEEN CHALLENGE OF WISCONSIN

Milwaukee, WI

To support general operations.....20,000



THE MILWAUKEE BALLET COMPANY

Milwaukee, WI

To support general operations.....95,000



THREE HARBORS COUNCIL BOY SCOUTS OF AMERICA

Milwaukee, WI

To support general operations.....50,000



TRUE THE VOTE

Houston, TX

To support Wisconsin programs.....75,000



UNITY IN MOTION

Milwaukee, WI

To support general operations.....30,000



UNIVERSITY OF WISCONSIN MILWAUKEE

Milwaukee, WI

To support the Bradley Distinguished Lecture Series.....40,000



UNIVERSITY OF WISCONSIN MADISON

Madison, WI

To support the Center for the Study of the American Constitution45,000

To support the Wisconsin Center for Economic Policy100,000



UWM RESEARCH FOUNDATION

Milwaukee, WI

To support the Bradley Catalyst Grant Program150,000



VCRT MACARTHUR FORUM

Milwaukee, WI

To support the General MacArthur statue and exhibits.....20,000



WALNUT WAY CONSERVATION CORP.

Milwaukee, WI

To support general operations.....40,000



WE GROW GREENS

Milwaukee, WI

To support Teens Grow Greens10,000



WISCONSIN ACADEMIC DECATHLON

Green Bay, WI

To support general operations.....10,000



WISCONSIN CONSERVATORY OF MUSIC

Milwaukee, WI

To support general operations.....80,000

2016 Grants Awarded



WISCONSIN FORENSIC COACHES' ASSOCIATION
Waunatona, WI
 To support the state tournament and
 the scholarship program..... 10,000



WISCONSIN HISTORICAL FOUNDATION
Madison, WI
 To support a history program..... 36,000



WISCONSIN INSTITUTE FOR LAW AND LIBERTY
Milwaukee, WI
 To support general operations..... 500,000



WISCONSIN LUTHERAN CHILD & FAMILY SERVICE
Germantown, WI
 To support the Student Assistance Program..... 25,000



WISCONSIN LUTHERAN HIGH SCHOOL
Milwaukee, WI
 To support participation in the
 Milwaukee Parental Choice Program 40,000



WISCONSIN PHILANTHROPY NETWORK
Brookfield, WI
 To support general operations..... 15,000



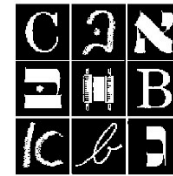
WISCONSIN POLICY RESEARCH INSTITUTE
Milwaukee, WI
 To support general operations..... 375,000

MILWAUKEE COMMUNITY EQUESTRIAN CENTER

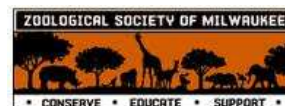
WISCONSIN PRESERVATION FUND
Milwaukee, WI
 To support the Milwaukee Community Equestrian Center..... 50,000



WORD OF HOPE MINISTRIES
Milwaukee, WI
 To support general operations..... 20,000



YESHIVA ELEMENTARY SCHOOL
Milwaukee, WI
 To support general operations..... 30,000



ZOOLOGICAL SOCIETY OF MILWAUKEE COUNTY
Milwaukee, WI
 To support a capital campaign..... 250,000
 To support general operations..... 70,000

GRAND TOTAL AWARDED **8,190,000**

Grantmaking Policies

The [program interests](#) and funding decisions of the Lynde and Harry Bradley Foundation are the responsibility of its [Board of Directors](#).

The Foundation's grantmaking policies and priorities may be modified at the Board's discretion.

The Foundation -

- Can only support organizations that are exempt from Federal taxation under Section 501(c)(3) of the Internal Revenue Code and publicly supported under Section 509(a)(1), (2), or (3).
- Cannot provide grants to individuals.
- Will not fund unspecified overhead costs.
- Considers requests from religious organizations only when the impact of the project extends into the broader community, and
- Requires grantees to provide periodic progress reports

Application Procedure

The Lynde and Harry Bradley Foundation has a two-step application process.

Step 1 - mail a brief letter of inquiry to “Grant Programs – Letters of Inquiry” about the organization and project to be supported. If the project falls within the Foundation’s current [program interests](#), the organization may be invited to submit a proposal.

Step 2 – mail the proposal to “Grant Programs – Proposals”

It should include:

- A thorough description of the project, its objectives and significance, and the qualifications and roles of participants.
- An organizational budget, a project budget, a specific request, and other pertinent supporting documentation (see the [checklist](#)).
- A copy of the organization’s Internal Revenue Service tax determination letter. The Foundation can only support organizations that are tax-exempt under Sections 501(c)(3) and 509(a), respectively, of the Internal Revenue Code.

Mailing address – The Lynde and Harry Bradley Foundation, 1241 North Franklin Place, Milwaukee WI 53202

Proposals are reviewed by the Foundation’s Program Staff, but all grantmaking authority rests with the Board of Directors.

The Board of Directors currently meets four times a year.

Proposal deadlines are February 1, May 1, August 1, and November 1. Every effort is made to review proposals for the next scheduled Board meeting. Occasionally, Board consideration is deferred to gather more information.

Many worthwhile projects do not fall within the Foundation’s program interests or the scope of its annual budget.

Numerous demands on the Foundation’s resources also limit grant size and its ability to make extended commitments.