

PARKS LISTENING TOUR PHASE II

Following up on Parks Listening Tour
and planning for the future



Photo by Jeremy Marshall

A PARTNERSHIP TO SUPPORT OUR PARKS



The City of Pittsburgh

Public Works Budget
Parks & Rec Public Safety
Planning DOMI

FUNDING SOURCES:

- General fund
- Allegheny County Regional Asset District*
- Various trust funds
- Grants and sponsorships
- Various fees



Capital Projects
Educational Programming
Public Programs & Events
Restoration & Ecology Work

FUNDING SOURCES:

- Grants and corporate gifts
- Individual donations
- Endowments
- Rental income
- Fundraising events

THE PARKS LISTENING TOUR

**MORE THAN
10,000 PEOPLE**

participated in some form

128 EVENTS

across the city



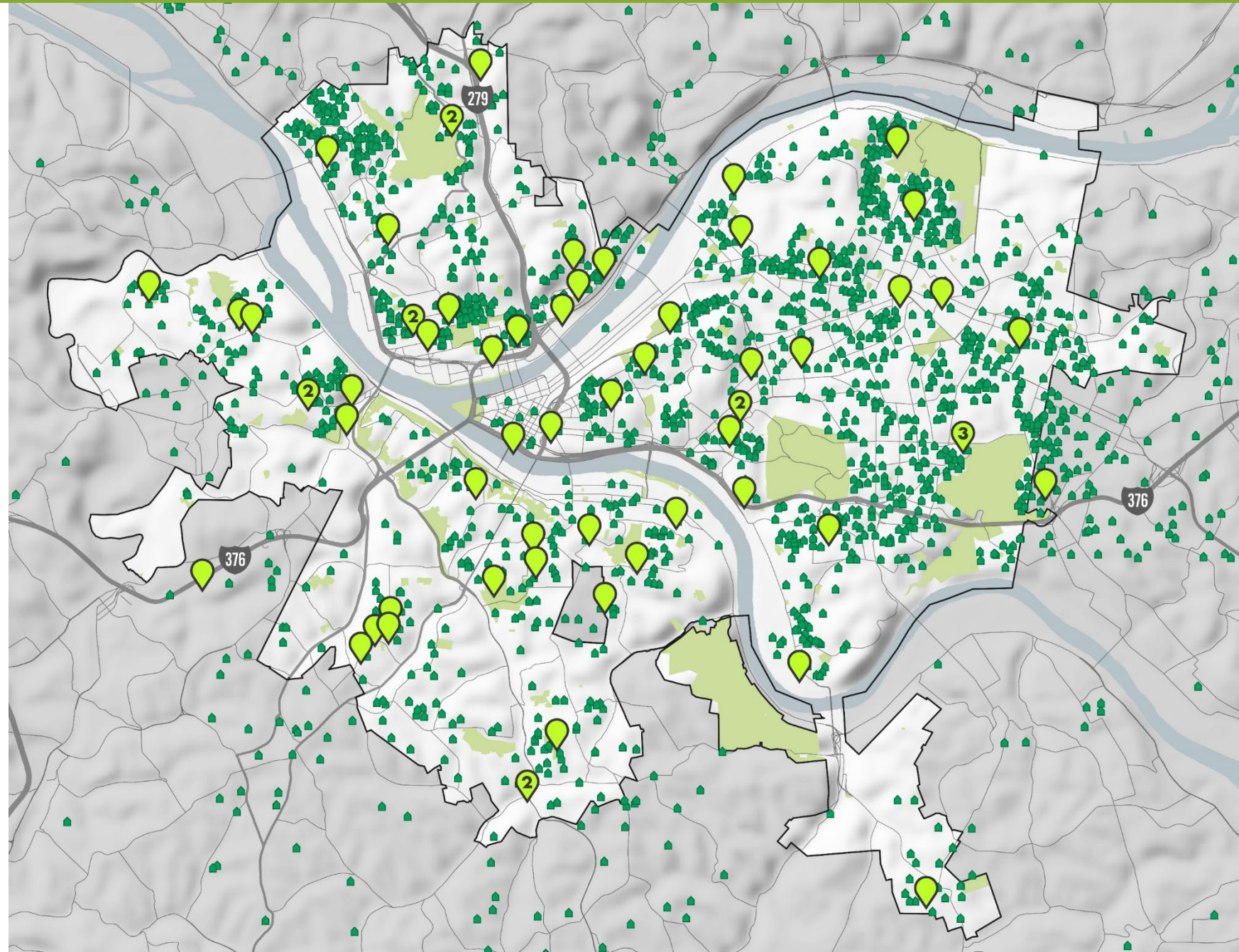
Meeting locations

3,400 PEOPLE

completed surveys

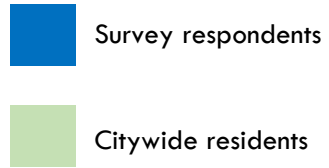


*Where survey
respondents are from*

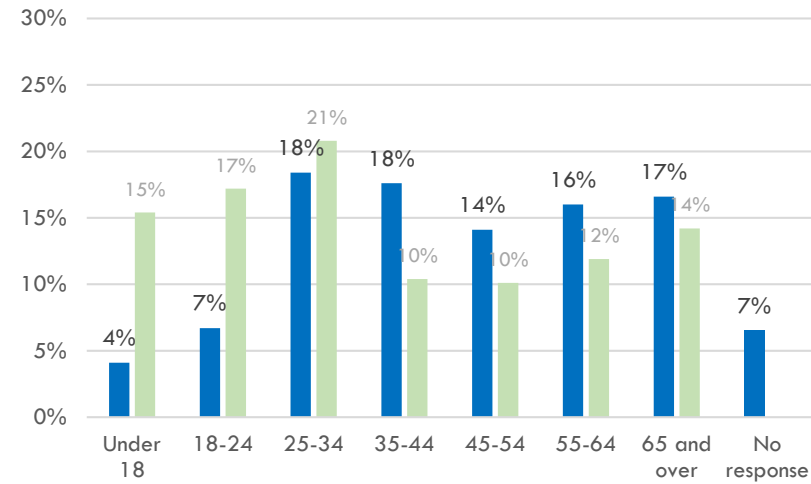


THE PARKS LISTENING TOUR

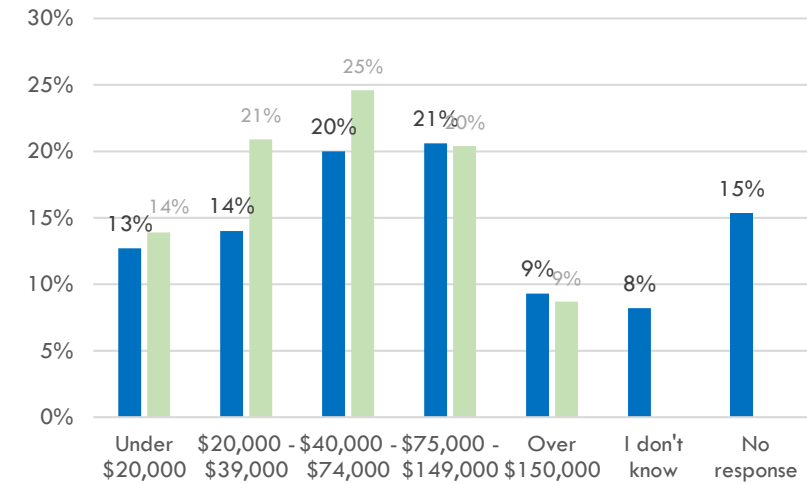
WHO TOOK THE SURVEY?



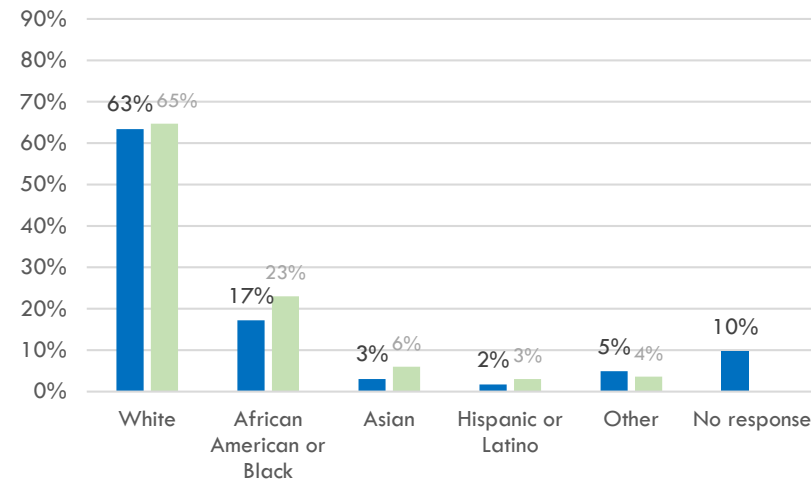
Age



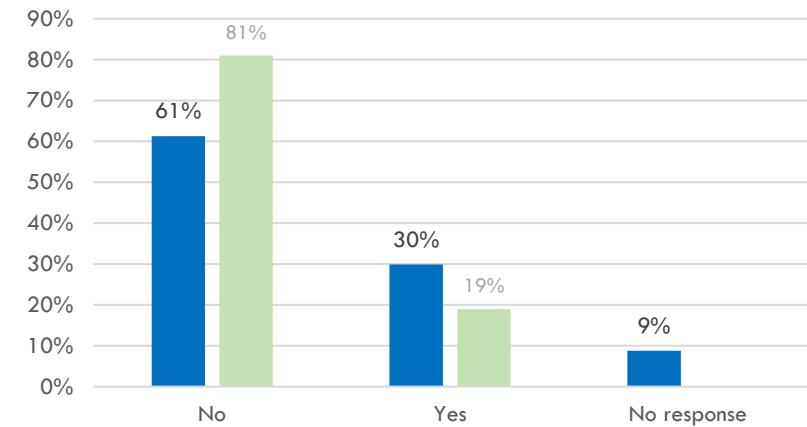
Household Income



Race or Ethnicity



Lives with Children Under 18 (Citywide data refers to households)



I. WHAT WE'VE LEARNED

about Pittsburgh's parks and your priorities

II. RESTORING PITTSBURGH PARKS

a new strategy for realizing our parks' potential
based on your input

III. NEXT STEPS

how we can make it happen together

I. WHAT WE'VE LEARNED

Shrinking resources for park maintenance and upkeep translate to incredible need across the system.

Pittsburgh's park and recreation system needs more than \$400 million

just to fix the existing park amenities, modernize recreation facilities,
and implement existing park master plans

Our parks face more than a \$13 million annual maintenance funding shortfall

With nearly a 70% gap in staffing needs where we could put
more people to work in your park or recreation/healthy active living center on a weekly basis
and

\$3 million to replace old equipment

plus \$4.75 million in new equipment as we grow our maintenance teams

I. WHAT WE'VE LEARNED

Residents who took the Parks Listening Tour Survey taught us a lot about what makes some parks great – and others not.

Quotes from people who took the survey

I've been going to this park since I was a child. It's **always clean** and offers **many things for all ages**.

When I go to my favorite parks, I **hardly see any vandalism**, no trash, and the landscape is beautiful. The majority of the time the **lawns are up to par**, and overall the atmosphere is great!

The **park crew does an excellent job** of maintaining the park snow removal. Grass is cut and **rubbish picked up**. The foreman is always on top of things.

It's **meticulously maintained**, and there are **activities for everyone**.

Garbage is abundant, there is decaying infrastructure, **trees are falling down**, there are **not enough garbage cans**. It needs to have **a lot of work** done.

Lighting needed! The playground area is worn and sees a lot of **graffiti** and vandalism. It **doesn't get mowed** much, and the **courts** are in bad shape.

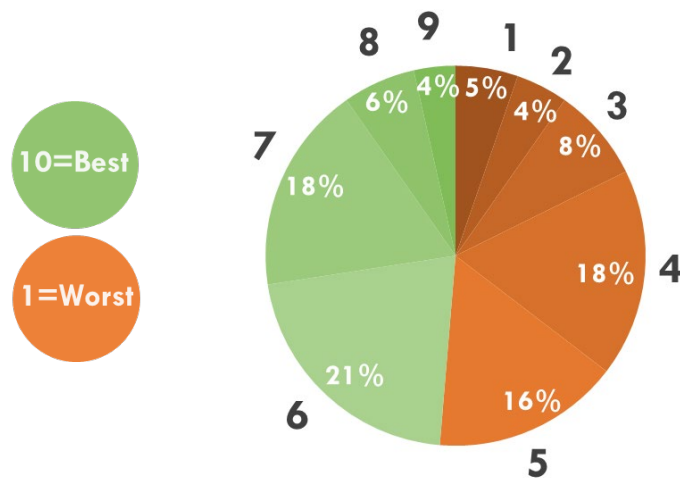
It **needs maintenance**. **Buildings** are in disrepair, **pathways** need to be cleaned, cleared, repaired. **Nothing is planted** in the flower beds. The **grassy areas** are **not mowed often enough**.

Overall the park **needs to be updated and maintained** regularly.

I. WHAT WE'VE LEARNED

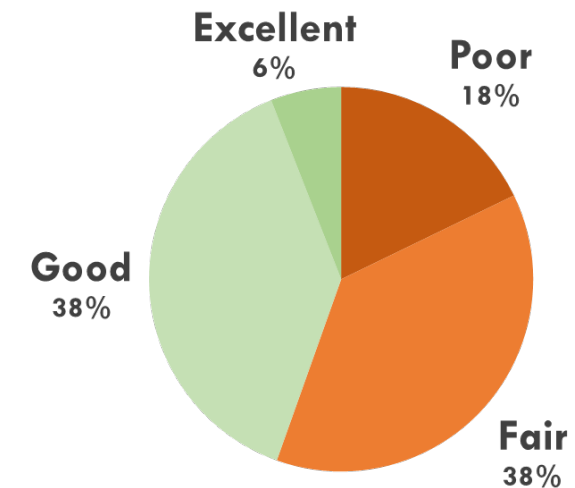
Survey participants confirmed PPC & City of Pittsburgh's assessment:
at least half of parks are not in good condition.

More than half of the parks that residents rated in the Parks Listening Tour Survey got an average condition score of 5 or less out of 10



Condition of parks according to survey participants

PPC & City of Pittsburgh's assessment also concluded that more than half of parks are in "fair" or "poor" condition

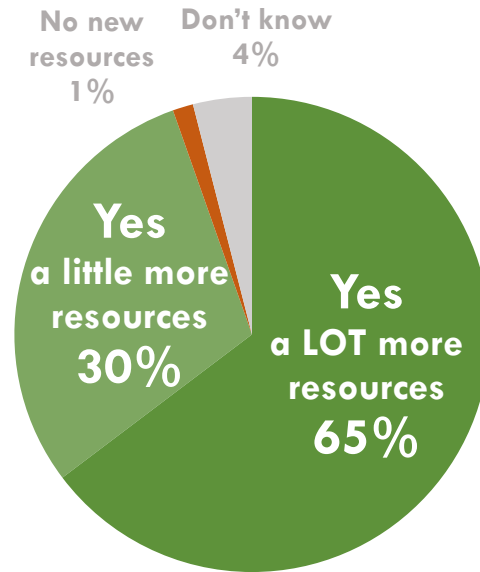


Condition of parks according to PPC & City of Pittsburgh assessment

I. WHAT WE'VE LEARNED

Participants in the Parks Listening Tour told us our parks need more resources.

95% of people who took the survey
said our parks need more money.



We agree.

II. RESTORING PITTSBURGH PARKS

**The Pittsburgh Parks Conservancy and
the City of Pittsburgh**
are making a commitment

to achieve excellence and equity
in every park in every neighborhood in Pittsburgh

II. RESTORING PITTSBURGH PARKS

**The Pittsburgh Parks Conservancy and
the City of Pittsburgh**
are making a commitment

to achieve excellence and equity
in every park in every neighborhood in Pittsburgh

- By **GENERATING NEW RESOURCES** for parks
Up to \$20 million a year in new funds plus sustained investment by the City
- By **SPENDING EQUITABLY** across the city
Prioritizing the parks and communities that need it most and responding to public input
- By **COMMITTING TO TRANSPARENCY**
Clear and open budgeting, so you know how and why money is being spent
- With **CITIZEN INPUT AND GUIDANCE**
Public accountability to make sure we accomplish our goals, together

II. RESTORING PITTSBURGH PARKS

What we hope to accomplish in the next six years:

- **A 20% increase in the amount of money going towards day-to-day maintenance of all parks across the city, at the same level of service in every park.**
Things like waste pickup; path, sidewalk, and trail maintenance; playground maintenance and more.
- **\$11.6 million in new funds over 6 years for repairing and restoring deteriorating park amenities**
like sidewalks, lighting, playgrounds, and more.
- **15 parks transformed with major investments in six years**
based on input from local communities, starting in the parks and neighborhoods that need it most.
- **\$415,000 a year to improve park programming, on average**
at recreation centers, pools, and elsewhere.

II. RESTORING PITTSBURGH PARKS

Four key areas of investment

MAINTENANCE

Regular upkeep tasks including waste pickup, landscaping & mowing, athletic field & court maintenance, and other tasks

REHABILITATION PROJECTS

Regularly-scheduled investments to repair or restore existing amenities in order to extend their life, improve safety, and increase functionality

CAPITAL PROJECTS

Major investments to transform a site through master planning and/or replacement of existing amenities

PROGRAMMING

Activities or events in which residents, kids, and families can participate

II. RESTORING PITTSBURGH PARKS

Four key areas of investment

MAINTENANCE

1st

On average,
survey participants ranked
maintenance
**the most important
category**

**REHABILITATION
PROJECTS**

2nd

On average,
survey participants ranked
rehabilitation
**second in
importance**

**CAPITAL
PROJECTS**

3rd

On average,
survey participants ranked
capital projects
**third in
importance**

PROGRAMMING

4th

On average,
survey participants ranked
programming
**fourth in
importance**

II. RESTORING PITTSBURGH PARKS

How will funds be distributed across the four key areas of investment?

MAINTENANCE

\$22 million

in new funds over six years

\$3.7 million

in new funds each year,
on average

38%

of new funds over six years

REHABILITATION PROJECTS

\$11.6 million

in new funds over six years

\$1.9 million

in new funds each year,
on average

20%

of new funds over six years

CAPITAL PROJECTS

\$10.2 million

in new funds over six years

\$1.7 million

in new funds each year,
on average

18%

of new funds over six years

PROGRAMMING

\$2.5 million

in new funds over six years

\$415,000

in new funds each year,
on average

4%

of new funds over six years

II. RESTORING PITTSBURGH PARKS

MAINTENANCE

Funds distributed to establish a consistent standard of care across all parks in the system

TOP CATEGORIES

Waste pickup

Emptying trash & recycling bins, picking up litter, removing leaves ...

Path / Sidewalk / Trail Maintenance

Trail work and repairs, street sweeping, minor repairs

Playground maintenance

Minor repairs, painting equipment, fixing safety surfaces

Tree care

Planting, pruning, mulching, removing dead trees

Landscape care

Mulching, fertilizing, trimming, pruning

Pool and spray park maintenance

Opening, closing, and maintaining pools, spray parks, locker rooms, showers, and other related amenities

Mowing

Cutting lawns and athletic fields

Other categories

Recreation centers, athletic fields and courts, ice & snow removal, pavilions, benches, fountains...

\$22 million

new funds over six years

\$3.7 million

new funds per year
on average

20%

increase in the
maintenance budget
over six years

II. RESTORING PITTSBURGH PARKS

MAINTENANCE

Funds distributed to establish a consistent standard of care across all parks in the system

TOP CATEGORIES	HOW MANY SURVEY PARTICIPANTS SAID THIS IS VERY IMPORTANT
Waste pickup	89%
Path / Sidewalk / Trail Maintenance	80%
Playground maintenance	77%
Tree care	74%
Landscape care	61%
Pool and spray park maintenance	61%
Mowing	60%
Other categories	Less than 60%

II. RESTORING PITTSBURGH PARKS

MAINTENANCE

Funds distributed to establish a consistent standard of care across all parks in the system

MAINTENANCE BUDGET CATEGORIES

Improving Practices

Improved assessment and progress tracking to make maintenance work more efficient, ensure we are hitting our goals and ensure we are implementing best practices

New Equipment

Will allow expanded maintenance staff to work more efficiently and perform more regular park maintenance tasks

Maintenance and Facilities Staff

This staff completes the day-to-day maintenance tasks that Pittsburghers say are most important

II. RESTORING PITTSBURGH PARKS

MAINTENANCE

Funds distributed to establish a consistent standard of care across all parks in the system

MAINTENANCE BUDGET CATEGORIES

TOTAL NEW FUNDING OVER 6 YEARS, AS A PERCENT OF NEW MAINTENANCE FUNDS

Improving Practices

\$1.8 M
8%

New Equipment

\$2.9 M
13%

Maintenance and Facilities Staff

\$17.4 M
79%



Will fund more than 45 new maintenance and facilities staff positions, purchase needed equipment while implementing more efficient practices, implement best practices, and improve results around the public priorities outlined in the previous slides.

II. RESTORING PITTSBURGH PARKS

REHABILITATION PROJECTS

Funds distributed to establish consistently high-quality amenities in all parks across the system

TOP CATEGORIES

System-wide Assessment	<i>To determine where investments are needed most</i>
Park Amenities	<i>Benches, pavilions, restrooms, other outdoor amenity replacements</i>
Paths/Sidewalks/Trails	<i>Repairs and replacement</i>
Park Lighting	<i>Field and other exterior lighting systems</i>
Playgrounds	<i>Play equipment and safety surface upgrades</i>
Pools & Spray Parks	<i>Repair and restore plumbing, mechanicals, liners, etc.</i>
Building improvements	<i>Recreation and Healthy & Active Living Centers building repairs</i>
Sports Facilities	<i>Restoration of surfaces, fencing, dugouts, concession stands, etc.</i>
War Memorials & Public Art	<i>Repairs to monuments and art</i>
Critical Repairs	<i>Urgent building/facilities repairs due to prolonged deferred maintenance</i>
Below Grade Infrastructure	<i>Underground issues and repairs, pipes, utilities, etc.</i>
Operations Facilities	<i>Improvements to maintenance operation facilities citywide</i>

\$11.6 million

new funds over six years

\$1.9 million

new funds per year
on average

In 2020, this amount will
represent a

23% increase

over the 2019
rehabilitation
budget

II. RESTORING PITTSBURGH PARKS

REHABILITATION PROJECTS

*Funds distributed to establish
consistently high-quality amenities in
all parks across the system*

TOP CATEGORIES	HOW MANY SURVEY PARTICIPANTS SAID THIS IS VERY IMPORTANT	
System-wide Assessment	-	
Park Amenities	89%	
Paths/Sidewalks/Trails	79%	
Park Lighting	66%	
Playgrounds	64%	
Pools & Spray Parks	53%	
Building improvements	50%	
Sports Facilities	50%	
War Memorials & Public Art	37%	
Critical Repairs	-	
Below Grade Infrastructure	-	
Operations Facilities	-	

II. RESTORING PITTSBURGH PARKS

REHABILITATION PROJECTS

*Funds distributed to establish
consistently high-quality amenities in
all parks across the system*

TOP CATEGORIES	HOW MANY SURVEY PARTICIPANTS SAID THIS IS VERY IMPORTANT	TOTAL NEW FUNDING OVER 6 YEARS, AS A PERCENT OF NEW REHAB FUNDS
System-wide Assessment	-	\$2.8 M 24%
Park Amenities	89%	\$877,000 8%
Paths/Sidewalks/Trails	79%	\$1.1 M 10%
Park Lighting	66%	\$877,000 9%
Playgrounds	64%	\$614,000 5%
Pools & Spray Parks	53%	\$614,000 5%
Building improvements	50%	\$2.7 M 23%
Sports Facilities	50%	\$438,000 4%
War Memorials & Public Art	37%	\$88,000 1%
Critical Repairs	-	\$701,000 6%
Below Grade Infrastructure	-	\$438,000 4%
Operations Facilities	-	\$263,000 2%

*These improvements will
also support programming
enhancements*

II. RESTORING PITTSBURGH PARKS

CAPITAL PROJECTS

Funds will be directed to all parks in the city in order of their community and park need

\$10.2 million

new funds over six years

\$1.7 million

new funds per year
on average

On average, each year this amount will represent a

11% increase

over the 2019 capital projects budget

CAPITAL PROJECTS

Funds will be directed to all parks in the city in order of their community and park need

How do we determine how much funding each park will receive for capital projects?

FUNDING FOR EACH PARK IS BASED ON:

- The amount that would be needed to bring all parts of the park up to high level of quality
- The amount that parks of a similar size and in a similar condition are slated to receive
- Any master plans associated with each park and the cost of implementing their next phase
- The cost of managing and implementing a multi-year community planning and construction project

II. RESTORING PITTSBURGH PARKS

CAPITAL PROJECTS

Funds will be directed to all parks in the city in order of their community and park need

How do we determine the order in which park transformations will be funded?

Scoring Strategy to Determine the Order In Which Park Capital Projects Will Be Funded

Community Need Score

POVERTY

Is it high nearby,
especially
among
MINORITIES?

Percent of families living in poverty within a 10-minute walk of each park, and whether the area is a racially concentrated area of poverty

YOUTH & SENIORS

Are there
many living
nearby?

Percent of residents who are under 18 or over 65 within a 10-minute walk of each park

HEALTH

Do many people
suffer from
poor health
in the area?

Rates of asthma, obesity, diabetes, anxiety, and depression within a 10-minute walk of each park

NEIGHBORHOOD

What is the
condition
of the area?

Rates of violent crime and vacancy within a 10-minute walk of each park

II. RESTORING PITTSBURGH PARKS

CAPITAL PROJECTS

Funds will be directed to all parks in the city in order of their community and park need



Community Need Scores are calculated based on the areas within a 10-minute walk of each park. Above, an example of the area within a 10-minute walk of a park.

How do we determine the order in which park transformations will be funded?

Scoring Strategy to Determine the Order In Which Park Capital Projects Will Be Funded

Community Need Score

POVERTY

Is it high nearby, especially among **MINORITIES?**

Percent of families living in poverty within a 10-minute walk of each park, and whether the area is a racially concentrated area of poverty

YOUTH & SENIORS

Are there many living nearby?

Percent of residents who are under 18 or over 65 within a 10-minute walk of each park

HEALTH

Do many people suffer from poor health in the area?

Rates of asthma, obesity, diabetes, anxiety, and depression within a 10-minute walk of each park

NEIGHBORHOOD

What is the condition of the area?

Rates of violent crime and vacancy within a 10-minute walk of each park

II. RESTORING PITTSBURGH PARKS

CAPITAL PROJECTS

Funds will be directed to all parks in the city in order of their community and park need

How do we determine the order in which park transformations will be funded?

Scoring Strategy to Determine the Order In Which Park Capital Projects Will Be Funded

Community Need Score

POVERTY Is it high nearby, especially among **MINORITIES?**

Percent of families living in poverty within a 10-minute walk of each park, and whether the area is a racially concentrated area of poverty

YOUTH & SENIORS Are there many living nearby?

Percent of residents who are under 18 or over 65 within a 10-minute walk of each park

HEALTH Do many people suffer from poor health in the area?

Rates of asthma, obesity, diabetes, anxiety, and depression within a 10-minute walk of each park

NEIGHBORHOOD What is the condition of the area?

Rates of violent crime and vacancy within a 10-minute walk of each park

Park Need Score

PARK CONDITION Is it excellent, good, fair, or poor?

PPC & City of Pittsburgh condition assessment of all parks

PARK INVESTMENT Have the park's needs been met in recent years?

Share of each park's total need since 2009 that has been met

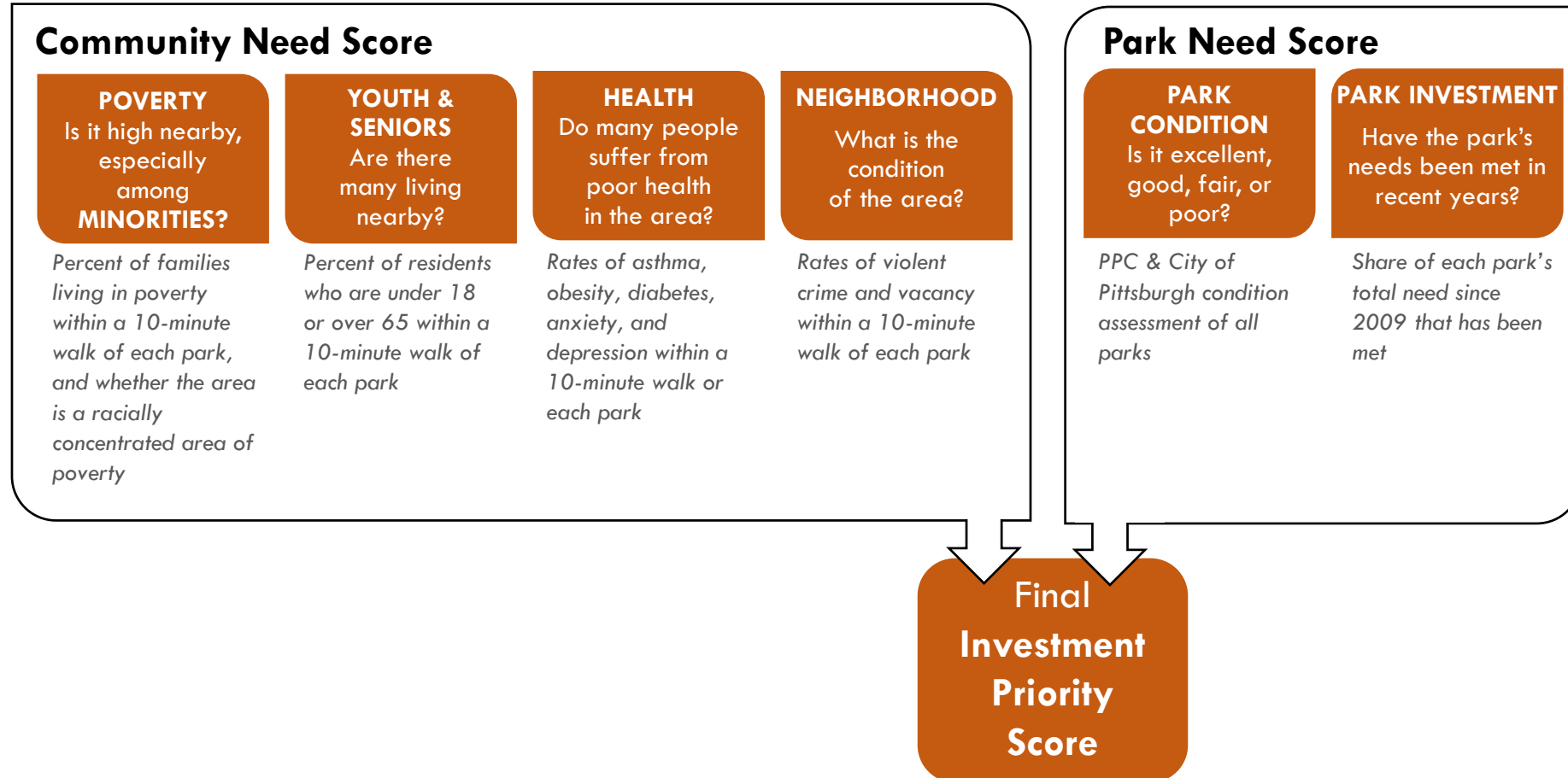
II. RESTORING PITTSBURGH PARKS

CAPITAL PROJECTS

Funds will be directed to all parks in the city in order of their community and park need

How do we determine the order in which park transformations will be funded?

Scoring Strategy to Determine the Order In Which Park Capital Projects Will Be Funded



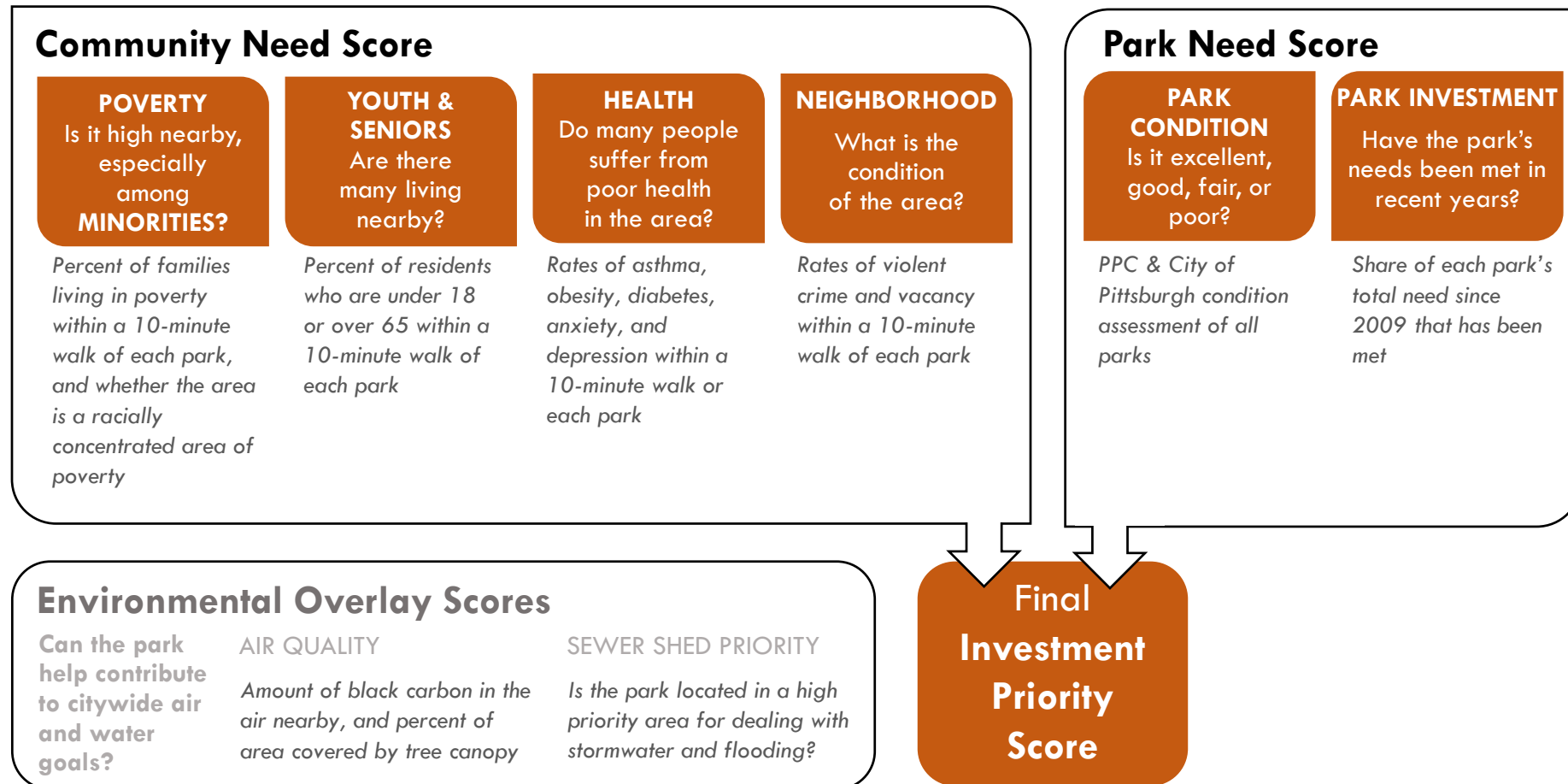
II. RESTORING PITTSBURGH PARKS

CAPITAL PROJECTS

Funds will be directed to all parks in the city in order of their community and park need

How do we determine the order in which park transformations will be funded?

Scoring Strategy to Determine the Order In Which Park Capital Projects Will Be Funded



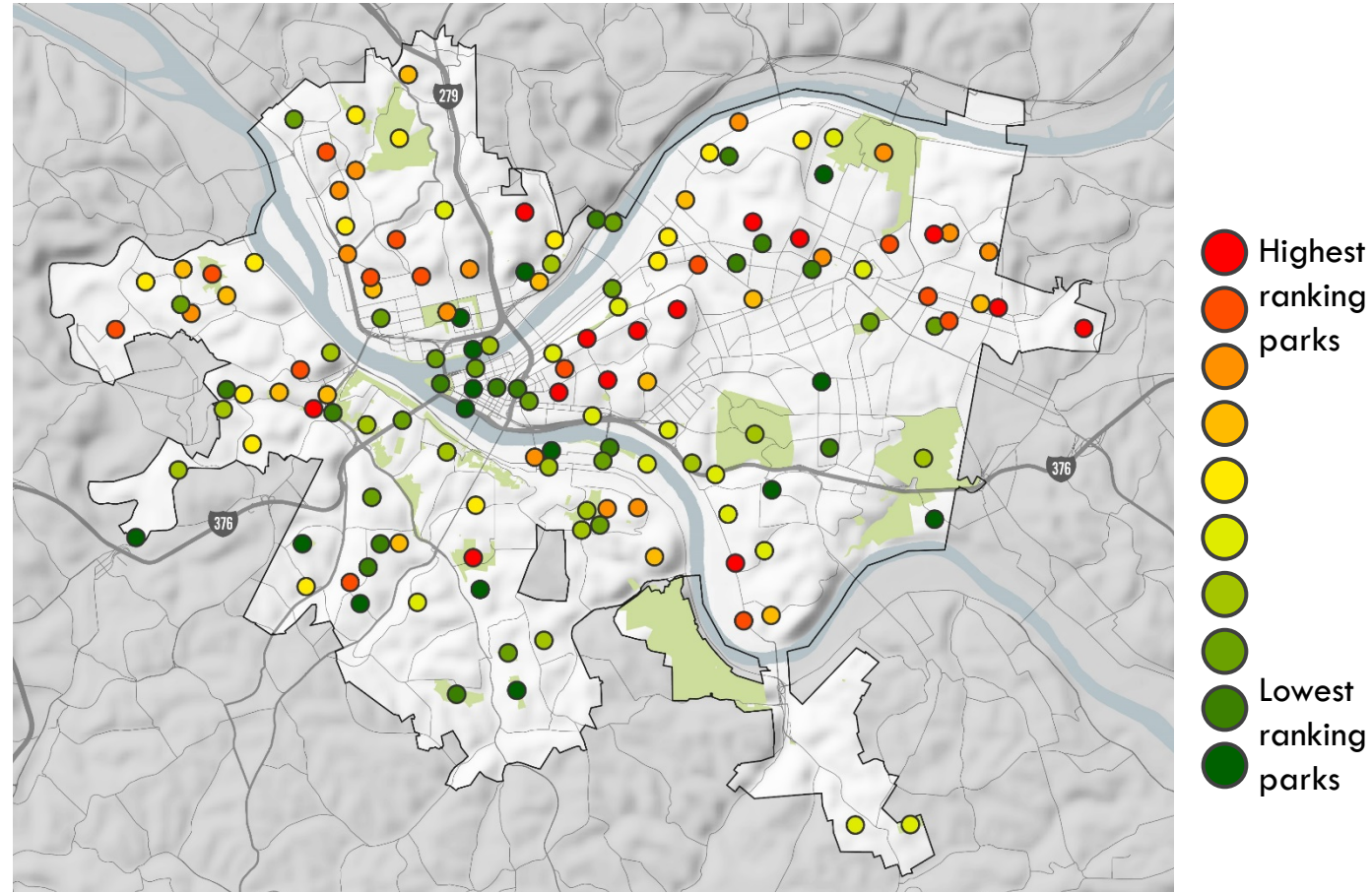
II. RESTORING PITTSBURGH PARKS

CAPITAL PROJECTS

Funds will be directed to all parks in the city in order of their community and park need

Where did parks rank highest based on community and park need?

Final Investment Priority Scores for Capital Projects in Pittsburgh Parks



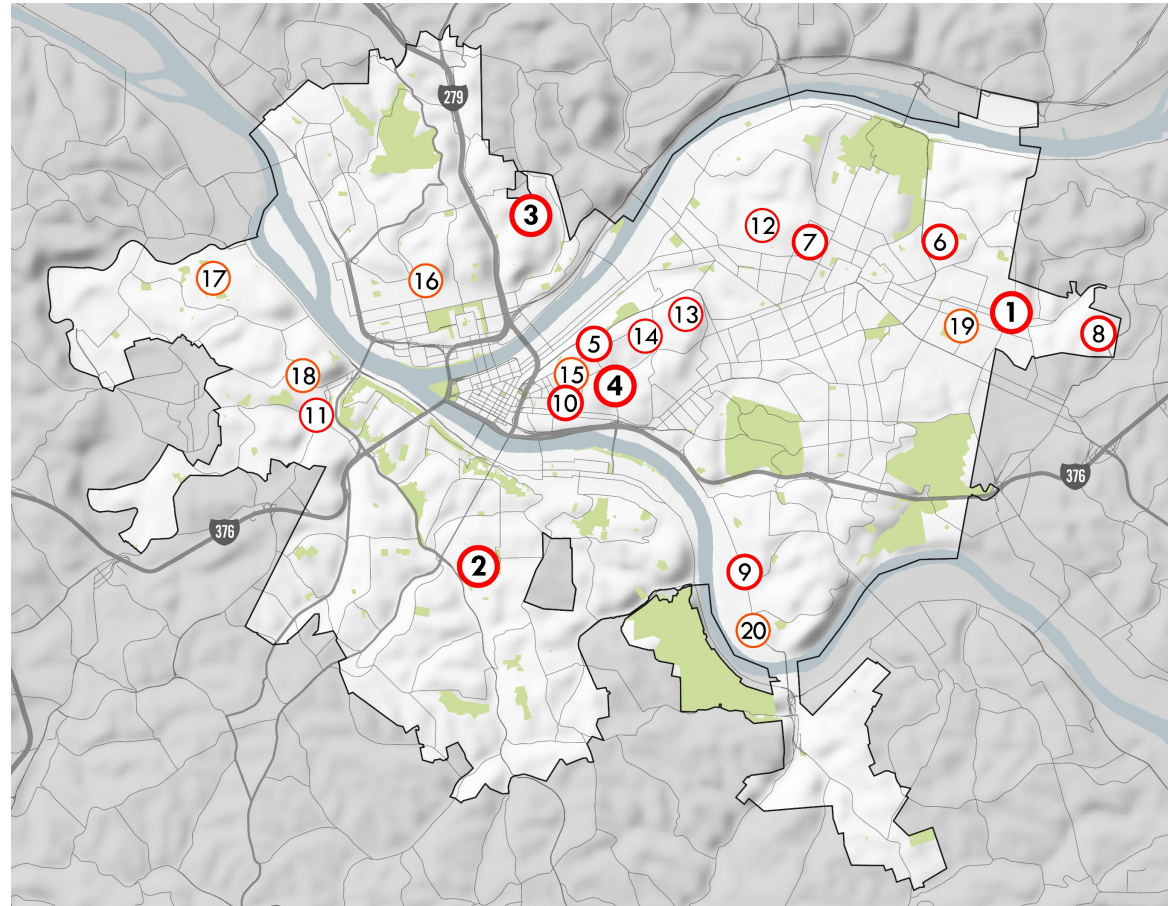
II. RESTORING PITTSBURGH PARKS

CAPITAL PROJECTS

Funds will be directed to all parks in the city in order of their community and park need

Where did parks rank highest based on community and park need?

Parks Ranked 1st through 20th in Investment Priority



1	Baxter Park
2	McKinley Park
3	Spring Hill Park
4	Kennard Park
5	Ammon Park
6	Paulson Rec Center
7	Kite Hill Park
8	East Hills Park
9	Lewis Park
10	Albert Turk Graham Park
11	West End Park
12	Fort Pitt Park
13	Robert E. Williams Park
14	Vincennes Park
15	Granville Park
16	Jefferson Park
17	Sheraden Park
18	Townsend Park
19	Homewood Park
20	Hazelwood Senior Center

II. RESTORING PITTSBURGH PARKS

CAPITAL PROJECTS

Funds will be directed to all parks in the city in order of their community and park need

Where did parks rank highest based on community and park need?

Parks Ranked 1st through 40th in Investment Priority

1	Baxter Park	21	Manchester Park
2	McKinley Park	22	Cross and Strauss Park
3	Spring Hill Park	23	Able Long Park
4	Kennard Park	24	Dallas Park
5	Ammon Park	25	Larimer Park
6	Paulson Rec Center	26	Brighton Heights Senior Center
7	Kite Hill Park	27	Paul J. Sciallo II Memorial Park
8	East Hills Park	28	Fairywood Park
9	Lewis Park	29	Paulson Park
10	Albert Turk Graham Park	30	Woods Run Park
11	West End Park	31	Allegheny Commons
12	Fort Pitt Park	32	Marshall-California Park
13	Robert E. Williams Park	33	Eleanor Street Park
14	Vincennes Park	34	Monongahela Park
15	Granville Park	35	Chadwick Park
16	Jefferson Park	36	Garland Park
17	Sheraden Park	37	Fineview Park
18	Townsend Park	38	Fifty-Seventh Street Park
19	Homewood Park	39	Young Field Park
20	Hazelwood Senior Center	40	Highland Park

II. RESTORING PITTSBURGH PARKS

PROGRAMMING

Funds distributed to establish high quality programming across the entire park system

TOP CATEGORIES

Strategic Planning & Outreach

Evaluation of programming needs, what residents want, potential partnerships to expand programs

Personnel

To hire additional part-time seasonal staff, expand programming and facility hours, increase staff retention, and offer trainings that encourage program innovation

New or Improved Programming

Modernizing facilities to support technology initiatives, expanding partnerships with community organizations to provide more programs in parks, expanded programs and hours

\$2.5 million

new funds over six years

\$415,000

new funds per year
on average

7%

increase in the
programming budget
over six years

II. RESTORING PITTSBURGH PARKS

PROGRAMMING

Funds distributed to establish high quality programming across the entire park system

TOP CATEGORIES	HOW MANY SURVEY PARTICIPANTS SAID THIS IS VERY IMPORTANT	
Strategic Planning & Outreach	-	
Personnel	-	
New or Improved Programming	-	
Programs for families	55%	
Youth sports programs	53%	
Youth non-sports programs	52%	
Programs for people with disabilities	52%	
Music or performances	51%	

II. RESTORING PITTSBURGH PARKS

PROGRAMMING

Funds distributed to establish high quality programming across the entire park system

TOP CATEGORIES	HOW MANY SURVEY PARTICIPANTS SAID THIS IS VERY IMPORTANT	TOTAL FUNDING OVER 6 YEARS, AS A PERCENT OF NEW PROGRAMMING FUNDS
Strategic Planning & Outreach	-	\$349,000 14%
Personnel	-	\$872,000 35%
New or Improved Programming	-	\$1.3 M 51%
Programs for families	55%	-
Youth sports programs	53%	-
Youth non-sports programs	52%	-
Programs for people with disabilities	52%	-
Music or performances	51%	-

Will support extended hours and more staff for programming and facilities

Will support modernized facilities with technology and wi-fi, and expanded offerings in line with the survey results

III. NEXT STEPS

Two-thirds of everyone who took our survey said they want to **help advocate for more resources** for our parks.

Now is the time.