

# The Crestview

2,587 SF • 3 Bedrooms • 2.5 Baths



## Design Features

Exceptionally Designed One Story Living  
Features Generous Rooms

Covered Outdoor Space Extends Living Area

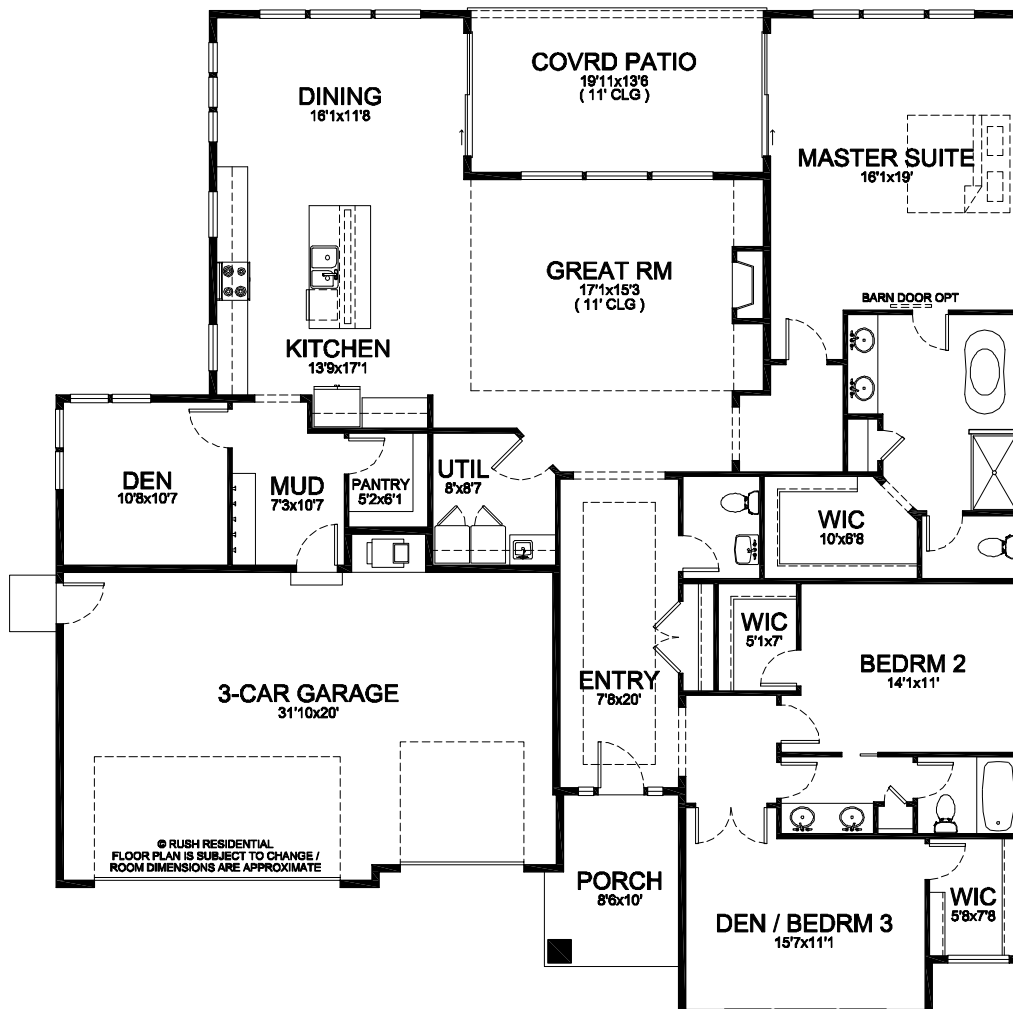
Oversized 3-Car Garage includes Mudroom  
Access to Main Living Areas

Kitchen Offers Abundant Cabinetry, Walk In  
Pantry & Large Eat-In Island With Storage

Impressive Spa-Inspired Master Suite  
Includes Private Access to Outdoor Living

Central Utility Room Includes Sink & Storage

Private Den is Ideal for Home Office, Media  
Room, Craft or Hobby Space



Reported square footage and floor plans are approximate. Base price does not include options. Plans shown are a general representation of, and may vary from actual constructed floor plan. Standards vary depending on neighborhood. For more information, contact your Rush Residential sales representative. Rush Residential reserves the right to change the floor plan at any time.

Building Exceptional Homes.

[www.RushResidential.com](http://www.RushResidential.com)