

Standard Features



Spend your time living your best life! Rush offers more standard luxury features (with out expensive upgrades) than any other Edgewood homebuilder. Caldwell Crest homes are designed & built with integrity to last for years to come - a difference you'll notice the minute you walk into a Rush home.

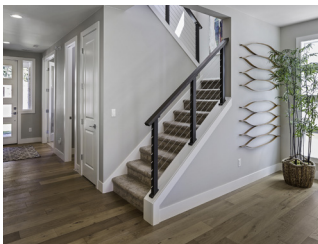
Neighborhood Amenities

- Intimate neighborhood of 14 large lots, nestled in a country setting yet close-in to amenities
- Well-designed streetscapes, lighting and landscaping throughout common areas to ensure long term community appeal
- Designer selected cladding and home color choices preserve balance and neighborhood consistency
- 10 year home warranty for every new Rush home



Home Exteriors

- Fully landscaped front yards include WiFi controlled exterior lighting and irrigation systems
- Fully fenced backyards - natural stained cedar fencing
- Sophisticated siding & stone accents (per home plan)
- Exterior trim on all window and doors
- Covered outdoor living spaces include sealed cedar decks and optional gas fireplace
- Exposed aggregate driveway, porch and patios
- Two frost free exterior hose bibs
- Two convenient waterproof exterior power outlets
- Lifetime warranted roof shingles to original owner
- Windows with lifetime warranty to original owner
- Siding with 25 year transferable warranty



Home Interiors

- Modern 2-panel painted doors throughout
- Millwork is professionally installed & expertly site finished around doors, stairs, windows and flooring
- Extensive use of large windows, include exterior screens
- Extremely durable plank style engineered flooring throughout first floor, resists scratches, dulling and includes a limited lifetime warranty
- Plush carpet in carpeted areas on second floor (per plan)
- High-end open rail stairway with wood caps
- Gas fireplace tiled to ceiling with kiln fir mantle to match selected cabinetry in Great Room
- Laundry room with sink & extra cabinetry (per plan)
- Closets include organizational shelf systems



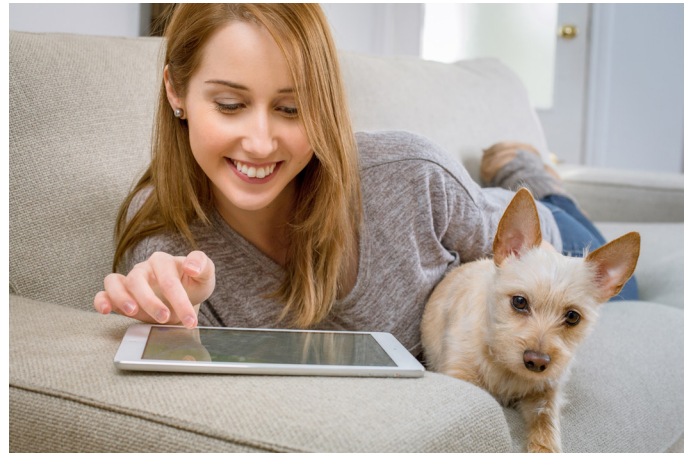
Building Exceptional Homes.

www.RushResidential.com

Standard Features Continued ...

Technology & Energy Efficiency

- Second floor is pre-wired for a WiFi access hub which can enable a stronger WiFi signal throughout home
- Central media panel for ease of home connectivity
- Three CAT6 outlets (Great Room, Den & Master)
- WiFi garage door opener (for remote access from most devices) with exterior key pad access
- Energy efficient furnace offers a 95% AFUE efficiency rating
- WiFi programmable thermostat, for temperature updates remotely from virtually any device
- On-Demand tank-less hot water heater reduces energy consumption significantly
- Automated whole home ventilation system for reduced humidity and increased interior comfort
- WiFi programmable front yard irrigation system
- Front yard landscape lighting fixtures with WiFi control



Kitchens

- Kitchen cabinetry with modern recessed front panels, upper crown moldings & designer knobs
- High-end Belmont cabinetry with solid construction, hidden hinges and beautiful finishes
- Tall 36" upper cabinets with crown molding offer extra storage, and include under cabinet LED lighting
- Soft close dovetail drawers throughout kitchen
- Quartz counters & full height 3x6 subway tile backsplash
- Large stainless steel under-mount sink with convenient pull-out faucet
- Stainless steel appliance package: 30" gas five-burner range & designer chimney hood, built-in microwave, modern gallery refrigerator, dishwasher & disposal
- Oversized island with eating bar
- Ribbon windows strategically placed in back-splash to increase natural light (per plan)
- Walk-in pantries with stylized satin etched glass door (per plan)

Master Suite & Bathrooms

- Upgraded cabinetry ideal for bathroom spaces
- Premium tiled counter tops & back splash
- Quartz Master Bath counter tops with designer accent deco back splash
- Huge glass shower, tiled walls with art deco tiles, fiberglass shower floor (no grout lines to clean) & large soaking tub included in Master Bathroom
- Tasteful lighted ceiling fan also in Master Suite

Building Exceptional Homes.