

# Standard Features



**Live your best life! At Rush Residential, we believe your home should be a haven, so we include more standard luxury features than any other area homebuilder.**

Based locally in Gig Harbor, Rush custom designs each home plan, includes exceptional finishes as standard & builds every component with integrity to ensure Rush homes are premium investments to last for years to come. This is a difference you feel the minute you walk into each Rush home.

## Neighborhood Amenities

- Gated, private neighborhood of 51 large lots, nestled along the Cushman Trail, and close-in to amenities
- Well designed street-scapes, lighting and landscaping throughout common areas, and HOA maintained front yards to ensure long term community appeal
- Designer selected cladding and home color choices preserve balance and neighborhood consistency
- 10 year home warranty for every new Rush home



## Home Exteriors

- Outdoor living features covered Trex™ deck with knotty pine tongue & groove ceiling, ceiling fan, lighting and beautiful stone surround gas fireplace
- Professional front and back yard landscaping including timer & WiFi ready irrigation system
- Fully fenced rear yards include 6' cedar fence & gate
- Garage doors compliment premium front entry door (per plan) and include WiFi ready Garage opener
- Front yard landscape lighting included for a beautiful neighborhood nighttime ambiance
- Sophisticated siding & stone accents (per home plan)
- Exterior trim on all window and doors
- Upscale driveway, porch and patios
- Two frost free exterior hose bibs
- Two convenient waterproof exterior power outlets
- Lifetime warranted roof shingles to original owner
- Windows with lifetime warranty to original owner
- James Hardie® Siding with 25 year transferable warranty

## Home Interiors

- Extra wide hallways and tall ceilings throughout
- 8ft tall solid core 2-panel doors showcase the main floor
- Millwork is custom installed & expertly site panted around all doors, windows, stair and flooring
- Extensive use of large windows, include exterior screens
- Beautiful plank style engineered hardwood flooring
- Plush carpet in carpeted areas on second floor (per plan)
- High-end modern metal railing on stairway
- Modern gas fireplace with reflective glass under flame, tile to ceiling & cantilevered kiln fir mantle in great room
- Laundry room with sink & extra cabinetry (per plan)
- Closets include organizational shelf systems
- Fully finished and painted garage interiors



**Building Exceptional Homes.**

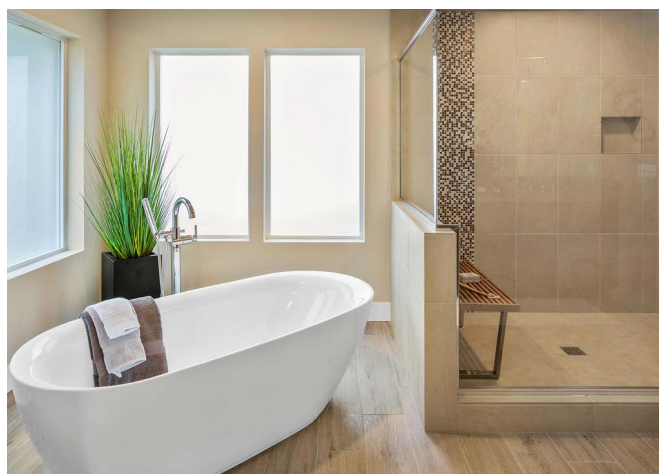
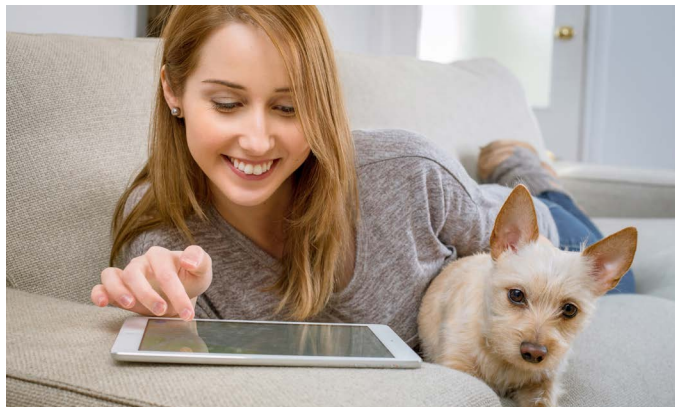
[www.RushResidential.com](http://www.RushResidential.com)

## Standard Features Continued ...



### Technology & Energy Efficiency

- Second floor is pre-wired for an access hub which can enable a stronger WiFi signal throughout home (per plan)
- Central media panel for ease of home connectivity
- CAT6 outlets per plan in the Den, Great Room, Master, Loft/Bonus, and cable outlets in all bedrooms
- WiFi garage door opener (for remote access)
- Energy efficient LED cans and light fixtures throughout
- Energy efficient furnace offers a 95% AFUE efficiency rating
- WiFi programmable thermostat, enables temperature updates remotely from virtually any device
- On-Demand tank-less gas hot water heater reduces energy consumption significantly (91% AFUE efficiency)
- Automated whole home ventilation system for reduced humidity and increased interior comfort
- WiFi programmable front & back yard irrigation system



### Kitchens

- Luxury Belmont™ brand cabinetry with light rails, crown molding, designer pulls, soft close doors & drawers, and premium crafted dovetail construction
- Tall 36" upper cabinetry for extra storage
- Under cabinet LED lighting package
- Quartz counter-tops and full height tile back splash
- Large high gauge stainless steel under-mount sink with convenient pull-out Moen® faucet
- Premium Stainless steel appliance package: 36" dual fuel six-burner range & designer hood, built-in microwave, gallery model refrigerator, beverage center cooler, professional dishwasher & garbage disposal
- Oversized island with designer selected pendant lights and eating bar
- Ribbon windows strategically placed in back-splash to increase natural light (per plan)
- Walk-in pantries with shelving (per plan)

### Master Suite & Bathrooms

- Spa inspired Master Bathroom features a satin etched sliding barn door entry and satin etched windows & water closet door. The Master Bath also includes an oversized tile & glass shower, freestanding tub, plank style tile floors, quartz countertops & Moen® fixtures.
- Master bathroom features satin etched oversized windows to allow privacy while flooding in natural light
- Tasteful lighted ceiling fan also in Master Suite
- Master closets off Master Bathroom for privacy
- Premium Belmont™ cabinets, tiled counter tops & back splash in secondary Bathrooms



**Building Exceptional Homes.**