

Aspen

2,698 SF • 3-6 Bedrooms • 2.5+ Baths

ESTATES
AT GIG HARBOR



Aspen Design Features

Covered Outdoor Living Space, with Beautiful Stone Gas Fireplace

Modern Kitchen with Plenty of Storage and Large Island

Open Main Floor For Easy Living, Also Features Den & Dining Room Spaces

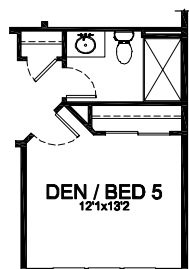
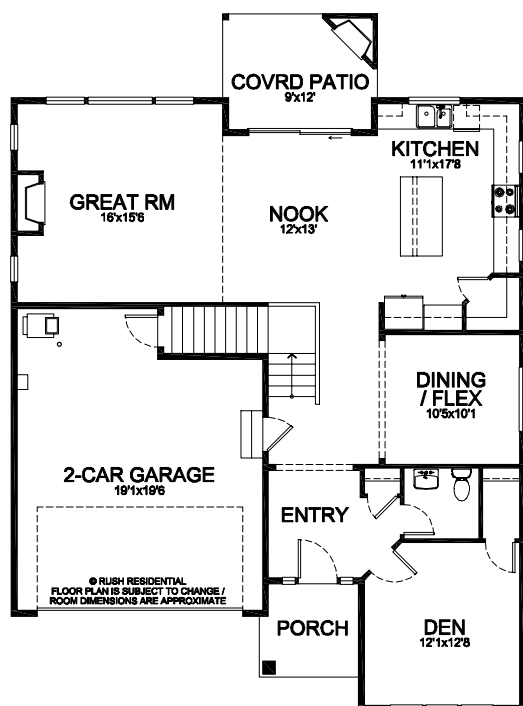
Impressive Spa-Inspired Master Suite With Designer Soaking Tub

Second Floor Laundry Room Located Close to Bedroom Spaces

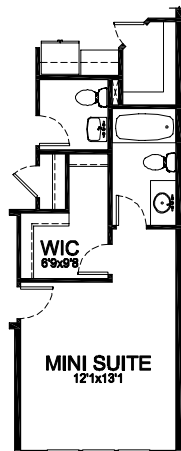
Large Bonus Room Offers Fantastic Flex Space

Optional Main Floor Full Bath or Large Mini-Suite, Available During Pre-Construction

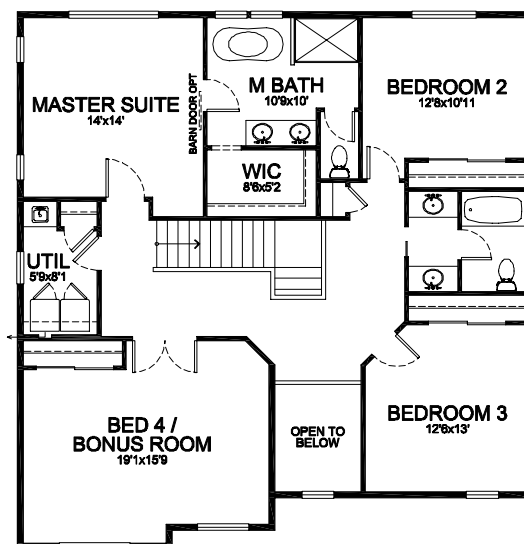
Located in the heart of Gig Harbor, the Estates features NW Craftsman homes built with exceptional attention to detail. Your family deserves a Rush home.



FULL BATH OPTION



MINI SUITE OPTION



Every Home in the Estates Features:

Premium landscaping, sprinkler systems, gas heat, upscale surfaces, engineered flooring, designer fixtures, stainless appliances, durable cabinetry and an impressive 10 year home warranty.

www.rushresidential.com

Plans shown are a general representation of, and may vary from actual constructed floor plan. For more information, contact your Rush Residential Sales Representative. Rush Residential reserves the right to change the floor plan at any time.

V. 3/27/18