

Summit

2,507 SF • 3-4 Bedrooms • 2.5 Baths

ESTATES

AT GIG HARBOR



Summit Design Features

Extra Large Covered Outdoor Living Space, with Beautiful Stone Gas Fireplace

Modern Kitchen Designed Incorporates A Walk-in-Pantry & Large Center Island

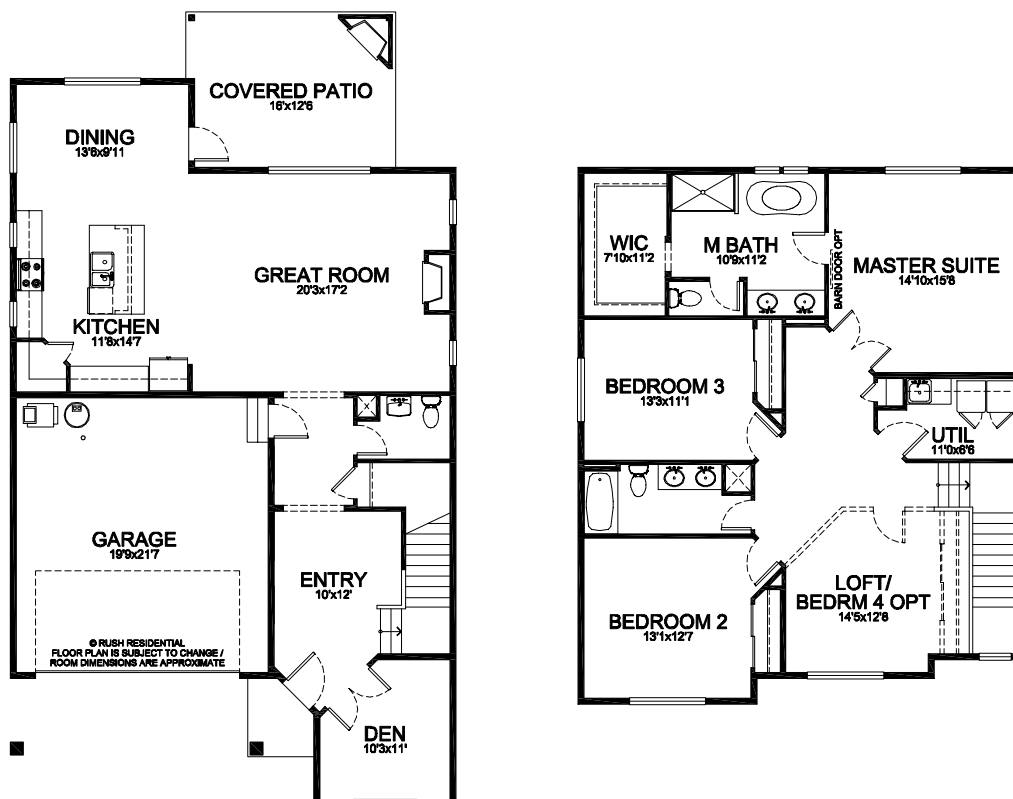
Open Concept Great Room Includes Dining, Kitchen & Family Spaces

Impressive Spa-Inspired Master Suite Features Soaking Tub & Walk-In-Closet

Second Floor Laundry Room Located Close To Bedrooms, Offers Sink & Extra Cabinetry

Large Loft Creates Generous Flex Space, Or May Be Converted To A Forth Bedroom

The Estates at Gig Harbor features homes like this one, designed for easy living. Tucked away in the center of Gig Harbor your family will love living in this Rush home.



Every Home in the Estates Features:
Premium landscaping, sprinkler systems, gas heat, upscale surfaces, engineered flooring, designer fixtures, stainless appliances, durable cabinetry and an impressive 10 year home warranty.

www.rushresidential.com

Plans shown are a general representation of, and may vary from actual constructed floor plan. For more information, contact your Rush Residential Sales Representative. Rush Residential reserves the right to change the floor plan at any time.

V. 3/27/18