

Vista

2,872 SF • 3-4 Bedrooms • 2.5+ Baths

ESTATES

AT GIG HARBOR



Vista Design Features

Covered Outdoor Patio Extends Your Living Outside With A Beautiful Stone Gas Fireplace

Modern Kitchen Designed Incorporates A Walk-in-Pantry & Large Center Island

Open Concept Great Room Includes Dining, Kitchen & Family Space With Gas Fireplace

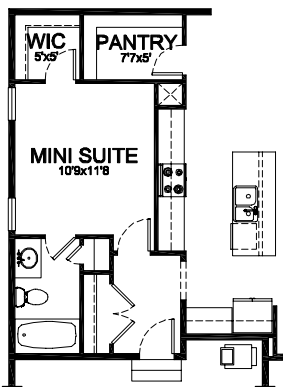
Impressive Spa-Inspired Master Suite Features Soaking Tub & Oversized Walk-In-Closet

Second Floor Laundry Room Located Close To Bedrooms, Offers Sink & Extra Cabinetry

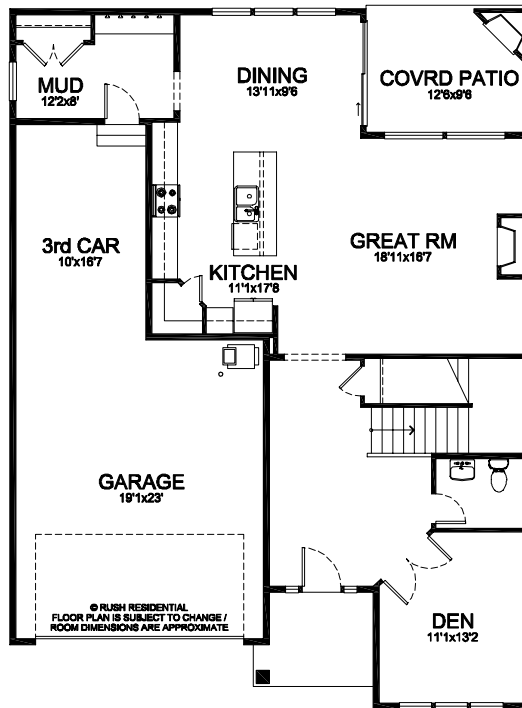
Large Loft Area Offers Generous Flex Space

Huge 3-Car Garage & Mudroom, May Be Converted To A Mini-Suite In Pre-Construction

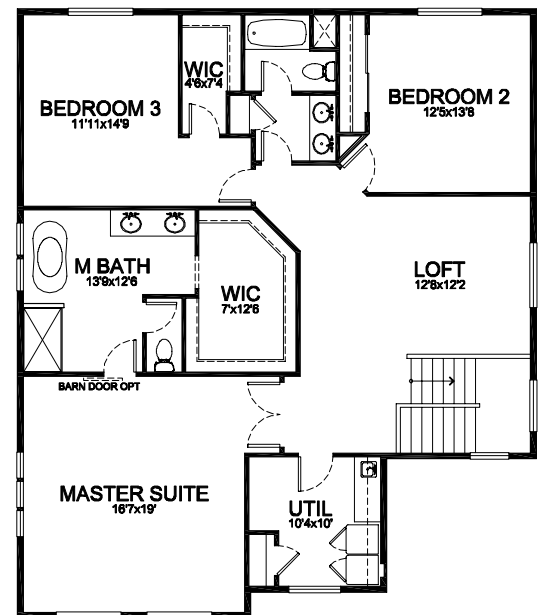
One Of Our Most Popular Floorplans, You Can Personalize The Vista To Be Everything Your Family Needs, In the Perfect Central Gig Harbor Location.



MINI SUITE OPTION
REPLACES 3rd CAR GARAGE
(+194sf)



© RUSH RESIDENTIAL
FLOOR PLAN IS SUBJECT TO CHANGE /
ROOM DIMENSIONS ARE APPROXIMATE



Every Home in the Estates Features:

Premium landscaping, sprinkler systems, gas heat, upscale surfaces, engineered flooring, designer fixtures, stainless appliances, durable cabinetry and an impressive 10 year home warranty.

www.rushresidential.com

Plans shown are a general representation of, and may vary from actual constructed floor plan. For more information, contact your Rush Residential Sales Representative. Rush Residential reserves the right to change the floor plan at any time.

V_3/27/18