

INSPECTIONXPERT CORPORATION TRAINING

Pratt & Whitney InspectionXpert OnDemand
with publish to Net-Inspect

Abstract

The purpose of this training is to show learners how to create a First Article Inspection Report and ballooned media using InspectionXpert OnDemand and including publishing to Net-Inspect.

InspectionXpert Services Corporation

services@inspectionxpert.com

Questions about the Pratt & Whitney Supplier Quality Platform: gppwsqafaihelpdesk@pw.utc.com

Questions about InspectionXpert or Net-inspect software: pwsupplierinfo@inspectionxpert.com



InspectionXpert OnDemand with publish to Net-Inspect training

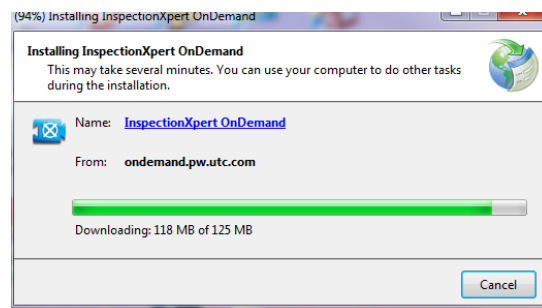
- **Pre-Training Requirements**
 - Ensure [system requirements](#) are in place prior to launching software.
- **Access Net-Inspect to launch InspectionXpert OnDemand via the Pratt & Whitney**

Supplier portal

- Download/Launch InspectionXpert OnDemand via the Pratt & Whitney Net-Inspect via [Pratt & Whitney Supplier Portal](#)

Note: If you have questions regarding access please e-mail gppwsqafaihelpdesk@pw.utc.com

- My Communities
- Home Supplier
- Net-Inspect FAI
- Choose location e.g. United States
- First Articles Tab
- Expand Generate View
- Click Generate E-First Article Report from 2D Drawing to download and launch InspectionXpert OnDemand.



Note: InspectionXpert OnDemand automatically download and install you may need administrative rights to install.

Note: When working on Pratt & Whitney product you must access InspectionXpert OnDemand from the Pratt & Whitney supplier portal.



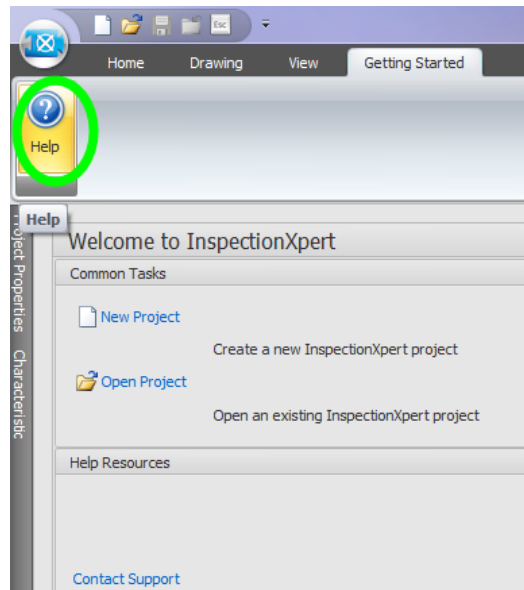
InspectionXpert OnDemand

- **User Interface**

- Tabs
- Start Button

- **Getting Started Tab**

- Welcome to InspectionXpert screen
 - Common Tasks
- Help Resources
 - Contact Support
- Help Icon





- **New Project**

- Choose template AS9102 (Inches).ixpot or if available Pratt & Whitney (Inches).ixpot

Note: a copy of the InspectionXpert OnDemand, Pratt & Whitney, inches template is available via [P&W Supplier Template](#)

- Browse to bring in documents that will be used to balloon, multiple can be chosen but at least one is required to start a project.
- All documents will be loaded into individual document tabs

Note: All documents should be name appropriately and contained in a folder. The project you are going to create and the documents should remain in the same folder.

- **Start Button**

- Features and Functions

- **Start Button - Options to set Project settings**

- **Application Options**

- General
 - Add-ons
 - Enable GD&T

Note: You may need administrative rights to install the GD&T font

- Performance
- Lists
- Display
- Licensing



- **Project Options**
 - General
 - Imaging/OCR
 - Ballooning
 - Exporting
- **Net-Inspect Options**
 - General
 - Custom Field Mapping
- **Resources**
 - Contact
 - Online
 - About
- **Home Tab**
 - Features and Functions
- **Drawing Tab**
 - Features and Functions
- **View Tab**
 - Features and Functions
- **Customize displays and Table Manager**
- **Project Properties (FORM 1-PART NUMBER ACCOUNTABILITY)**
 - Extract/OCR required information

Note: The Pratt & Whitney [Standard work document](#) contains additional detailed instructions.



- **Save As**
 - Project
- **Drawing Tab**
 - Apply Grid
- **Bill of Characteristics (FORM 3 CHARACTERISTIC ACCOUNTABILITY)**
 - Extraction Types
 - Dimension
 - GD&T
 - Notes
 - Other
- **View Tab**
 - Hide/Show
 - Drag and Drop, Delete and reuse, Cut-Copy/Paste and insert as needed
- **Bill of Material (FORM 1 - INDEX of or sub-assembly part numbers)**
 - Extract
 - Import
 - Individually extract
- **Specifications (FORM 2 - Materials and Special Processes)**
 - Extract
 - Import
 - Individually extract
- **Review Project**



- Drag and drop to move columns
- Sort and Filter to review data
- **Save**
- **Publish to Net-Inspect**
 - Detail or Assembly
 - New FAI or Partial FAI
- **Published project**
 - Navigate to published report
- **Net-Inspect inspection results entry, rating system**
- **Compare/Replace**
 - Save As - new revision
- **Publish to Net-Inspect**
 - Append
- **Publish to Net-Inspect**
 - Overwrite
- **Net-Inspect supplier checklist, approvals, FAIR submittal**



- **Additional Add-On's and Services**

Note: The Additional Add-On's and Services are **not** included in with your Pratt & Whitney version but are available for purchase by supplier.

- [MeasurementXpert](#) for results entry
- [CMMXpert](#) for results entry
- [Company, supplier or individual specific assistance and/or custom training](#)
- [Importing of previously created First Article reports, ballooning from other software](#)
- [First Article Inspection Ballooning and Report Creation Services](#)
- [InspectionXpert OnDemand for CAD](#)

Accessing Resources

- [Resources](#)
 - Standard Work (step by step instructions including requirements)
 - FAQ's
 - Recorded training video
 - Pratt & Whitney standardized project template
 - International Suppliers - Full 60 day trial version and corresponding output template