



FAQ

Applications Platform



FAQ: Applications Platform

PaaS, Apps Builder and Rapid Application Development are all industry terms used to describe our technology, but we believe in keeping things simple. With this in mind, please find below the top 13 questions that our existing customers asked before adopting our powerful Applications Platform.

? What is it?

It's a cloud-based software solution that enables semi-technical users to rapidly build applications of any size.

? What is it typically used to build?

Our Applications Platform is typically used to build:

- Ground up business applications
- Application extensions
- Web portals
- Workflow authorisation or contribution processes

? How is it priced?

Applications Platform: £28 per user, per month - billed annually.

Library Applications: POA - Dependent on app - per user, per month.

Portals: POA - Per portal based on user bands - billed annually.

? Is it a code-free experience?

90% of applications built on the Applications Platform are either 'code-free' or only contain simple scripts for field formulas etc.



FAQ: Applications Platform

? Does it support multiple devices?

Native responsive interface for a total cross-device experience.

? How have you addressed security?

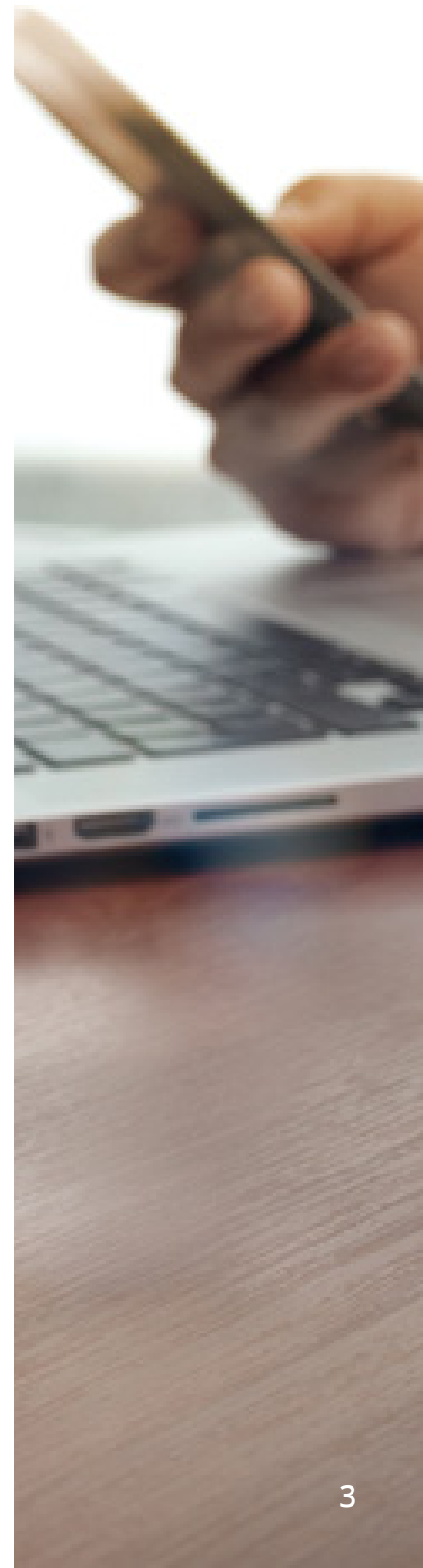
All web pages benefit from Secure Sockets Layer (SSL) and Hypertext Transfer Protocol (HTTPS), whilst applications are encoded with Base64 for complete peace of mind. Other security features include: Single Sign-On, Password Expiration Policies and IP Whitelists, which enable the administrator to control application access with incredible precision.

? How have you addressed the continuation of service?

As a PaaS provider, the continuation of service is one of our core competencies. If an unforeseen issue disrupted service, a back-up would automatically be commissioned and your level of service would be uninterrupted.

? How is support provided?

It depends. If you choose to have your application built by your existing solution provider they will provide first line support. If, however, you wish to build applications, extensions, workflows or portals yourself (and you have a support contract with us) Codeless Platforms will be your supporting partner.



FAQ: Applications Platform

? How long does a typical application take to build?

A single object plus associated list views, with view and edit record forms, can be achieved in minutes, and with clicks not code. In fact, relatively simple applications can also be built purely by importing an Excel spreadsheet.

? Are there any ready to use applications available without having to create them from a standing start?

We provide an Applications Library, with a wide variety of standard applications like CRM, HR and Organisation Management.

? Is there a demo environment I can trial the solution?

Yes, you can try our Applications Platform right now. Please arrange this with your account manager.

? Will it integrate with my other applications?

Yes, our market proven BPA Platform can connect any application, extension, workflow or portal you create to your existing on-premises or cloud-based applications.

We are highly respected within the system integration marketplace and our integration platform is used by over 7000 organisations worldwide.



FAQ: Applications Platform



What are the requirements?

The technical requirements couldn't be simpler. All you need is a computer and internet connection to start building applications.

If you have any specific questions that have not been answered or are looking for technical documentation regarding our Applications Platform, please contact us via:

Email: webenquiries@codelessplatforms.com

Phone: +44 (0) 330 99 88 700



Want to learn more?

Discover how Codeless Platforms can help your business by improving performance, boosting efficiency and cutting costs.



+44 (0) 330 99 88 700



enquiries@codelessplatforms.com



www.codelessplatforms.com

