

DCWAREHOUSE AUTOMATION Analysis and Reporting Tools

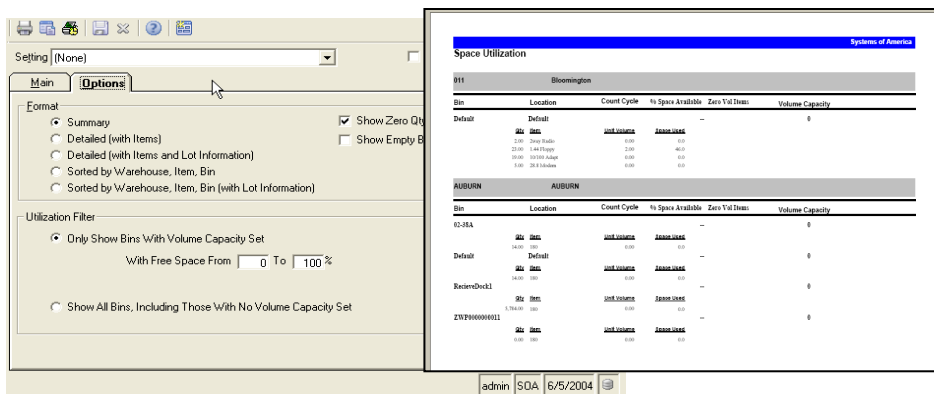
Real-time data analysis and inquiries are the key to keeping your distribution or manufacturing business competitive and efficient. Because DCWarehouse Automation works as a completely integrated module of your ERP System, you enjoy the benefits of real-time **meaningful data**.

Benchmarking performance is critical for a variety of reasons including accountability, rewarding productivity, traceability and planning.

DCWAREHOUSE INQUIRIES AND REPORTS INCLUDE:

Space Utilization Report: How well are you using the space in your warehouse? This report allows you to see if your locations and bins are filled to capacity or not. With the Space Utilization Report, you are able to view exactly how much space you have available in each of your bin locations.

This report is generated by each of the bins, viewing the parameters that you have set up for Volume Capacity and Weight Capacity. It will look at each of the items stored in that Bin, Weight Parameters and Volume Parameters that you have specified on each individual item.



The screenshot shows the 'Options' tab of the Space Utilization report. The 'Format' section includes radio buttons for 'Summary', 'Detailed (with Items)', 'Detailed (with Items and Lot Information)', 'Sorted by Warehouse, Item, Bin', and 'Sorted by Warehouse, Item, Bin (with Lot Information)'. There are checkboxes for 'Show Zero Qty' and 'Show Empty Bins'. The 'Utilization Filter' section has a radio button for 'Only Show Bins With Volume Capacity Set' and a range selector for 'With Free Space From 0 To 100 %'. A second radio button is for 'Show All Bins, Including Those With No Volume Capacity Set'. The main window displays two tables for 'BIRMINGHAM' and 'AUBURN'.

BIRMINGHAM					
Bin	Location	Current Cycle	% Space Available	Zero Qty Items	Volume Capacity
Default	Default	10/1/2004	100%	0	0
	1234	10/1/2004	100%	0	0
	5678	10/1/2004	100%	0	0
	9101	10/1/2004	100%	0	0

AUBURN					
Bin	Location	Current Cycle	% Space Available	Zero Qty Items	Volume Capacity
0230A	0230A	10/1/2004	100%	0	0
Default	Default	10/1/2004	100%	0	0
RevisedDck1	1234	10/1/2004	100%	0	0
ZWPH0000011	5678	10/1/2004	100%	0	0

RF/Mobile Real-Time Productivity Report and Analysis: The beauty of Real-Time Data is your ability to really see who is doing what, how productive they are and comparing this data to other warehouses, personnel or standards you set as a competitor in your industry.

OUR REAL-TIME LABOR AND PRODUCTIVITY MANAGEMENT TOOLS TRACK:

- Inventory Adjustments and Issues
- Bin Replenishment
- Canceled Picks

Continue Reading >>>



DCWarehouse Automation Analysis and Reporting

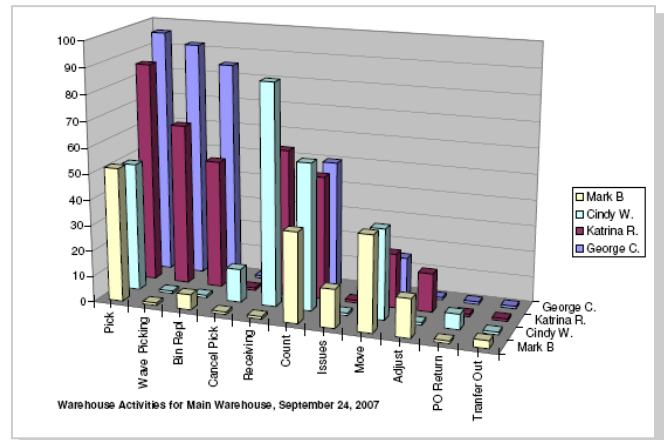
- Are You Looking to Improve Your Operations with Real-Time Visibility and Analysis?
- Do you need exact details on the who, how many, when and where?
- Would you ever need to actually recreate a past transaction down to the shipping label and paperwork?

If you answered **YES** to any of these questions, then you need DCWarehouse Automation Analysis and Reporting Tools.

Contact Us Today and Learn More.

**Call for a Demo!
(314) 664-2200**

- Inventory Counts
- Moves (Item and Bin)
- Pack Carts & Straight Packs
- Picks (Many Types)
- Purchase Order Returns
- Ready to Ship
- Receiving of Purchase Orders
- Receiving of Merchandise Returns
- Transfers & Shipments
- Move Materials to Work Center
- And Much More



Open CONSOL: Watch all your Mobile/RF Users in action! This is ideal for Information Systems Professionals as well as Operations Personnel to see your employees in action in a simple view. You can even send messages!

Extended Package Inquiry: This inquiry/report allows you to track packages with detailed information such as the customer, package number, shipment method, tracking number and more.

DCWarehouse Smart Picking: DCWMS not only allows for the automatic picking and shipping as each order is entered but it also handles wave picking, zone picking, ready-to-ship picking and more. In a simple query form users can create picks by a variety of options. This includes but is not limited to items, lots, specific bins, customer priority, zones, shipment methods, customers, etc.

DCWarehouse Management View: DCWMS allows warehouse managers to visually see in a graphical format all the open orders sorted by criteria they choose, such as shipment method, customer priority and more.

Once products have been confirm picked, a simple red check mark shows both warehouse managers and customer service if products have been picked or not. Additional information is also displayed such as the SKU Number, Quantity Picked and even an item image.

Bin Replenishment Report: Allows you to report on your “hot pick” or popular item bins and if stock needs to be moved for replenishment. You can sort the report by source or destination bins.

(Note: DCWMS has automated bin replenishment for mobile/RF users.)

Customer Returns Report: This report allows you to group by destination bin or return bin. It informs you which items have been returned to which specific return bins, and from there, where the items were sent to in the warehouse or the destination bin.



Learn More About DCWarehouse Automation!
www.DCSCcorp.com