

sage

Business Cloud

Enterprise Management

New Features Summary

Product Version 11.0
February 2018

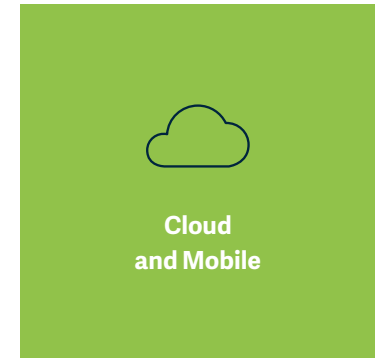
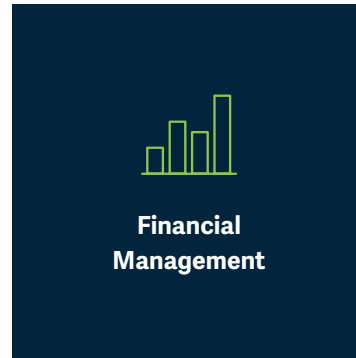




A better way to manage the entire business, at a lower cost and on a global scale

Introduction

- 1 Most important new features and improvements
- 2 New integrations
- 3 Other functional improvements
- 4 New complementary solutions
- 5 Availability



Key Benefits

Faster process cycle time, faster inventory turns, faster customer response time, faster insights into costs and performance.

Simpler management of distributed operations and simpler IT management.

Flexible capacity, customization, configuration and deployment options, in the cloud or on premises.



Sage Enterprise Solutions

Introduction

- 1 Important new features and improvements
- 2 New integrations
- 3 Other functional improvements
- 4 New complementary solutions
- 5 Availability

SAGE ENTERPRISE SOLUTIONS

ENTERPRISE MANAGEMENT



Financial Management

CORE APPLICATIONS

Budgets & Accounting

Fixed Assets

Financial Reporting

Dashboards

INTEGRATED APPLICATIONS

Business Intelligence



Supply Chain Management

CORE APPLICATIONS

Purchasing

Inventory Management

Sales Management

Customer Service

INTEGRATED APPLICATIONS

E-commerce

SalesForce CRM Connector

Warehousing & Logistics



Production Management

CORE APPLICATIONS

BOM Planning

Shop Floor Control

Quality Control

Project Management

INTEGRATED APPLICATIONS

Production Scheduling



People Management

CORE APPLICATIONS

Payroll

INTEGRATED APPLICATIONS

Workforce Management

Talent Acquisition

Talent Management

HR Planning

Data warehouse and multi-source data management and analytics

Cloud



Mobile



Windows 10

* Enterprise Management was formerly known as Sage X3

Important new features and improvements

☰ Introduction

1 Important new features and improvements

2 New integrations

3 Other functional improvements

4 New complementary solutions

5 Availability

New in Production Management Project Management

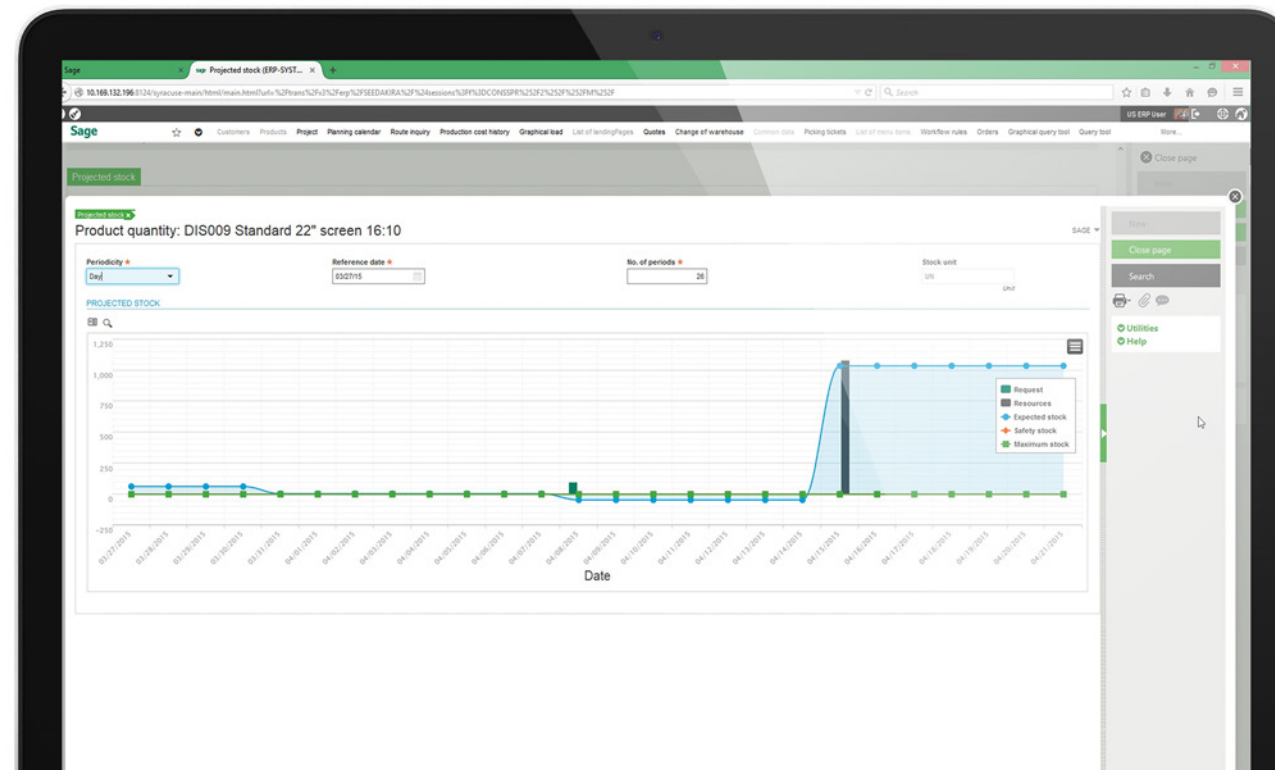
Manage all aspects of a project across financial, distribution and/or manufacturing processes, from quoting to planning resources and material, tracking costs and schedule, invoicing and analyzing profits.

New in Production Management Production Scheduler

Optimize production cycles and control lead times with more flexible graphical production planning and scheduling capabilities.

New in Production Management Automated Bank Statements

Improve the efficiency of the financial process by automatically generating the transactions matching open items or unbalanced operations when importing bank statements (MT940).



New integrations

Introduction

1 Important new features and improvements

2 New integrations

3 Other functional improvements

4 New complementary solutions

5 Availability

New in Supply Chain Management E-commerce

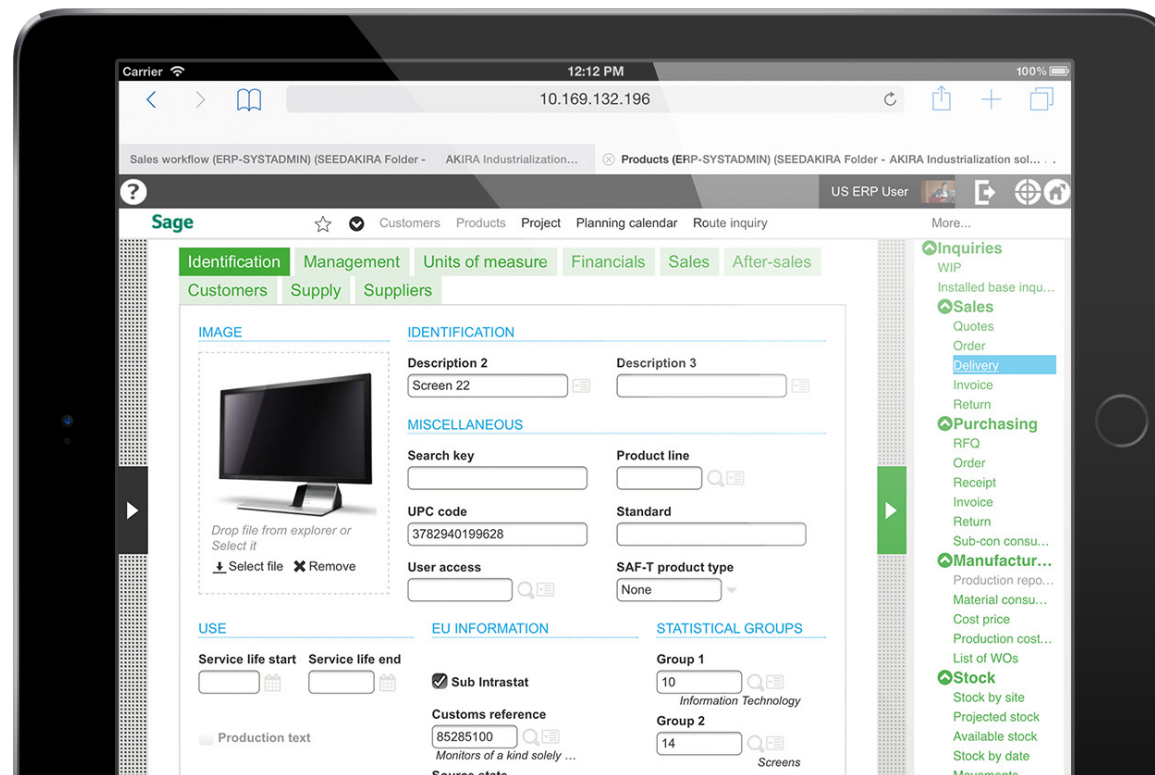
Build or customize a comprehensive webstore within days, and manage catalogs, pricing, inventory, customers, and all transactions as part of the Enterprise Management* core supply chain management processes.

New in Supply Chain Management CRM

Synchronize customer records between Salesforce CRM and Enterprise Management*, and display customer orders in Salesforce using the new Enterprise Management Connector.

New in Financial Management Financial Reporting

Easily design reports, with intuitive Excel-based reporting capabilities integrated with Enterprise Management* financial management, and automate the running and distribution of reports to teams or individuals.



* Enterprise Management was formerly known as Sage X3

Other functional improvements

Introduction

1 Important new features and improvements

2 New integrations

3 **Other functional improvements**

4 New complementary solutions

5 Availability

Supply Chain Management

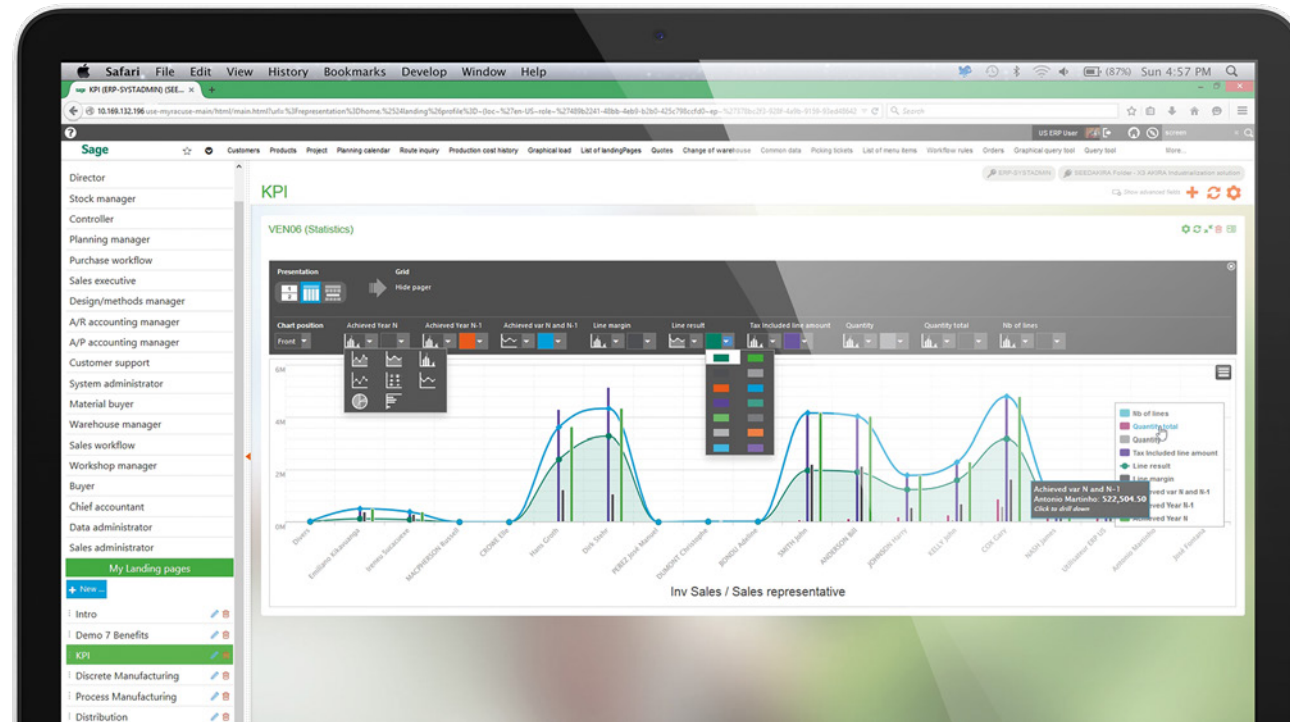
- Optimize container capacity for shipments
- Attach & track documents associated with receiving goods
- Easily customize steps to track during receiving process
- Easily update costs associated with purchasing on shipment and view shipment cost totals
- Create complementary invoice from shipments

Production Management

- Enable shop floor tracking by team, available in ADC

Financial Management

- Accelerate closing with real-time inter-company consolidation process, at the right level of aggregation
- Accelerate currency conversion by running conversions in one run, at the balance sheet level (vs. transaction level)
- Fast entry booking: accelerate journal and AP/AR entries.
- Automate reminder campaigns based on amounts or intervals
- Enable blocking sales transactions based on credit rating
- Compliance updates for AU, DE, PL, PT, ZA, ES, FR, CH



New complementary solutions

Introduction

- 1 Important new features and improvements
- 2 New integrations
- 3 Other functional improvements
- 4 **New complementary solutions**
- 5 Availability

Supply Chain Management Enterprise Management Warehousing

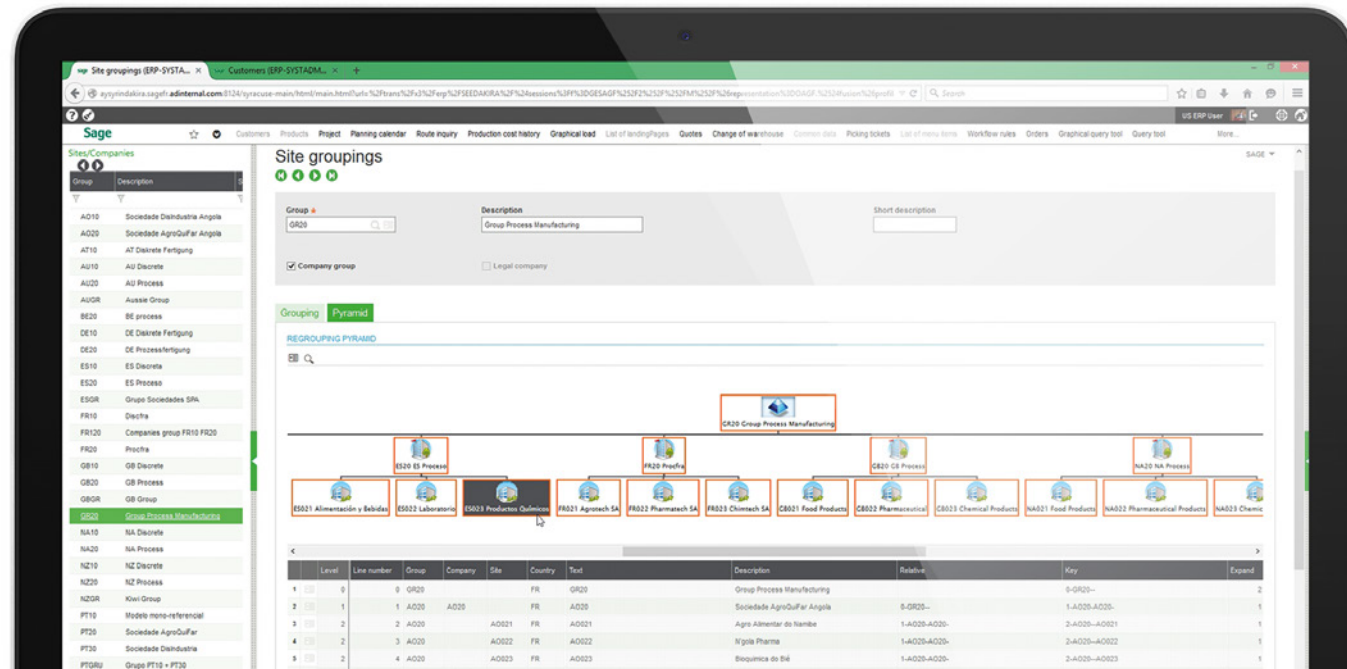
Extend Enterprise Management* with best-in-class warehouse management capabilities from Enterprise Management Warehousing to optimize all physical flows in the warehouse, from receipts to shipments.

Analytics | Enterprise Management Data & Analytics

Integrate, migrate and manage data across platforms, and get consistent insights from multiple sources. Enterprise Management Data & Analytics provides users with a powerful data warehouse for managing information from any source effectively, and offers built-in data models to simplify data migration and reporting.

Industry solutions Enterprise Management Construction

Extend the core Enterprise Management* capabilities for financial and supply chain management, with a cohesive solution to manage all of construction and real estate business processes – including project management, contract management, estimating, timesheet transactions, sub-contracting, project financial tracking and cash flow.



* Enterprise Management was formerly known as Sage X3

Availability

Introduction

1 Important new features and improvements

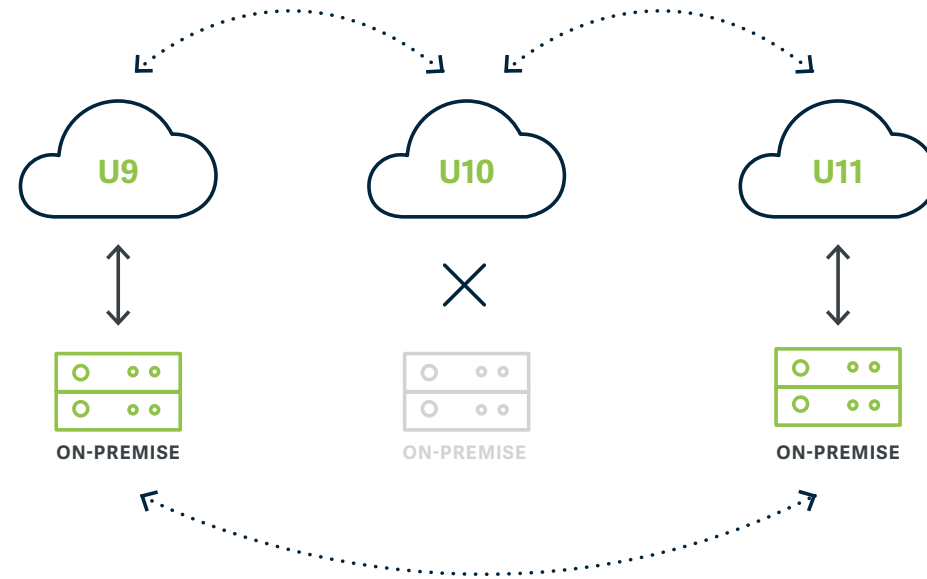
2 New integrations

3 Other functional improvements

4 New complementary solutions

5 Availability

Enterprise Management* version 11 is available to customers in the cloud or on-premises. All features introduced in previous cloud-only releases (update 10.x) are now also available to customers on-premises with Enterprise Management* version 11. See Product Update 10 release guide for details on the previous release.



* Enterprise Management was formerly known as Sage X3

sage

Business Cloud

Enterprise Management

sage.com/enterprisemanagement