



Business Cloud

Enterprise Management

A better way to manage your entire business

The next generation business management solution for your enterprise.



Adopt a faster, simpler, more flexible business management solution

Sage Business Cloud Enterprise Management* takes the complexity out of running your business. It simplifies every part of your operation, leaving you lean and ready for whatever comes next, wherever you are in the world. With Enterprise Management, you are choosing the next generation business management solution for your enterprise to grow faster and run an agile organization.



Faster

Enterprise Management* runs your business faster than ever before, with a cohesive, enterprise-class solution to manage all of your core business processes – from purchasing to manufacturing, inventory management, sales, customer service and financials – locally and internationally. It also accelerates collaboration and reporting, and delivers real-time insight into all costs and operational performance.



Simpler

Enterprise Management* is easy to use in a familiar Web browser and on mobile devices, giving you the freedom to work where you need. It is also simple to manage, and highly configurable to adapt to your unique processes, role and preferences. Enterprise Management is a versatile solution – use it as a service in the cloud and reduce demand on your in-house team to maintain the system, or deploy the solution on the infrastructure of your choice.



Flexible

Enterprise Management* is ready for your industry. Built-in functionality for process manufacturing, manufacturing, distribution and services tasks, adjusts to accommodate your company's unique rules and processes. It's also easily scalable – so you'll never run out of capacity again – and quickly adapts to your changing needs, growing with your business as you expand to new markets or geographies, and making it simple to manage a global business.

"With Sage I can sit here at my desk in Minnesota, quote a customer in Germany, and send off that quote in German with the amount in Euros. Even better, I can perform that same task, just as effectively, from my iPad at the coffee shop."

John Babcock, Vice President of Finance, Satellite Industries

* Enterprise Management was formerly known as Sage X3

Running your business does not have to be complicated

Get more done, faster.

Increase user productivity and accelerate adoption with an intuitive web user interface that users can easily personalize to work the way they do.

Go where your business takes you.

Access your data on mobile devices, check your inventory, take customer orders, approve purchases, and view key performance indicators on the go.

Take back control over your processes.

Eliminate inefficiencies, ensure compliance, and streamline operations with end-to-end integration of your business processes to control costs and improve profits.

Get the insight you need, when you need it.

Evaluate risks and monitor performance in real-time with user dashboards, self-service business intelligence, and reporting tools.

Serve your customers better.

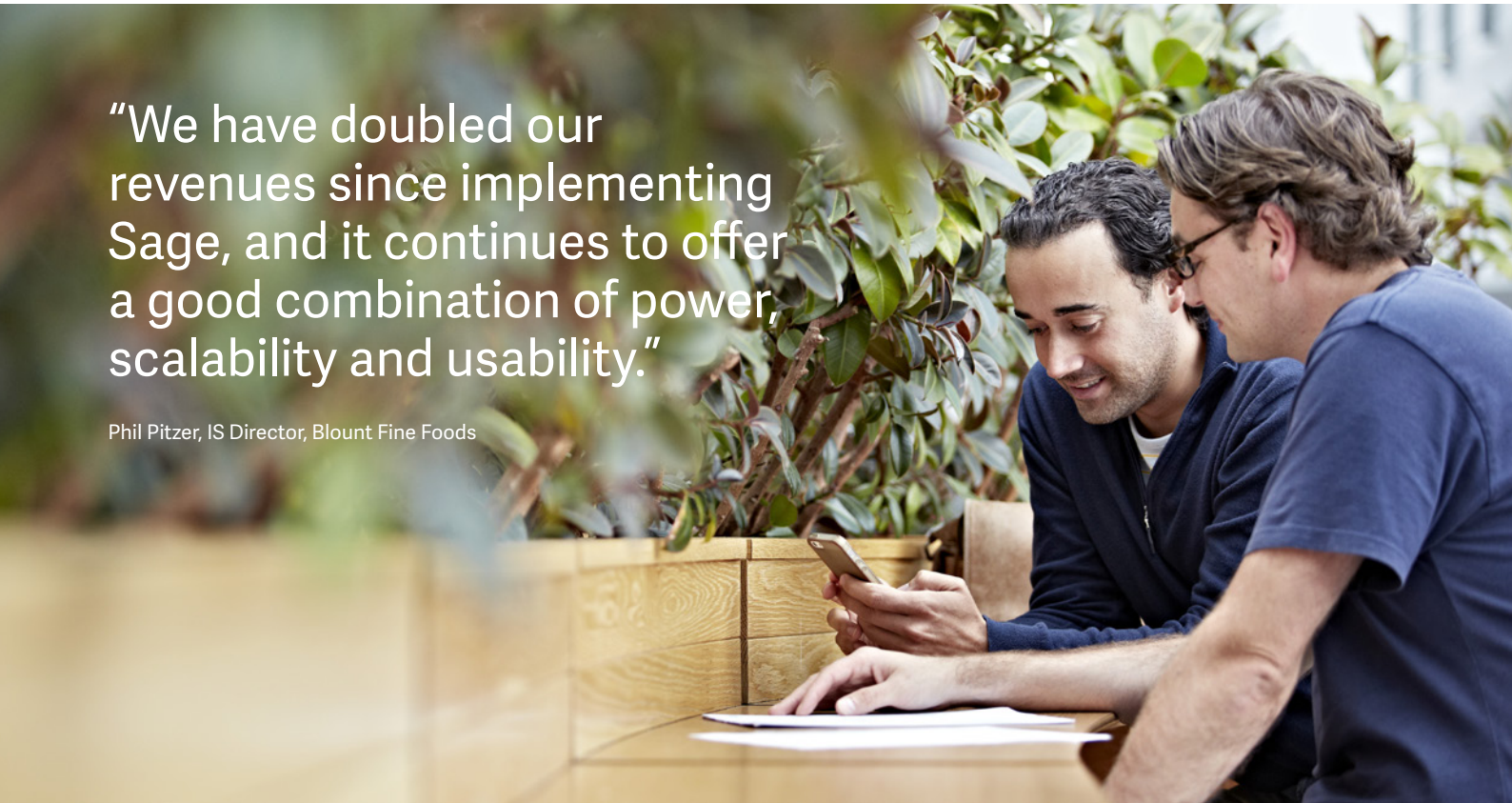
Accelerate issue resolution and increase employee responsiveness with faster and simpler access to the information they need.

Expand to new markets or geographies.

Increase capacity, implement new processes, manage new business units, or expand to new geographies with a flexible business management solution designed for growth and international trade.

Gain agility and focus on your business.

Take advantage of enterprise-class business management functionality, security, and scalability at a fraction of the cost and complexity of typical ERP systems. Simplify IT management and free up resources to focus on more important projects.

A photograph of two men sitting at a wooden table outdoors. The man on the left is holding a smartphone and looking at it, while the man on the right, wearing glasses, looks on. They are in front of a large potted plant. The text is overlaid on the left side of the image.

“We have doubled our revenues since implementing Sage, and it continues to offer a good combination of power, scalability and usability.”

Phil Pitzer, IS Director, Blount Fine Foods

Ready for your industry

Unlike other solutions that rely heavily on add-on software integrations to support industry-specific processes, Enterprise Management* includes functionality that's ready to use in most distribution and manufacturing industries. It also uses flexible web service technology that enables easy access of complementary solutions when necessary.

Designed to meet the needs of these industries and more:



Distribution

*Expand your market
and control your costs*

Retail trade

Transportation & Logistics

Wholesale trade



Manufacturing

*Consistently deliver
high quality goods*

High-Tech

Industrial equipment

Medical devices

Metal fabrication



Process Manufacturing

*Achieve process and
product consistency*

Chemicals

Cosmetics

Food & beverage

Nutraceuticals

Pharmaceuticals



Services

*Keep your customers
satisfied and returning*

Advertising

Consulting services

Engineering services

Equipment rental

IT/Software services

Maintenance
and Repair services

* Enterprise Management was formerly known as Sage X3

“For Novarroz, choosing Sage meant a significant improvement in the automation of its business processes with customers, partners, and suppliers. This user-friendly tool provided complete integration of information, improved efficiency, and total control over costs.”

Joao Andrade, Export Sales Manager, Novarroz



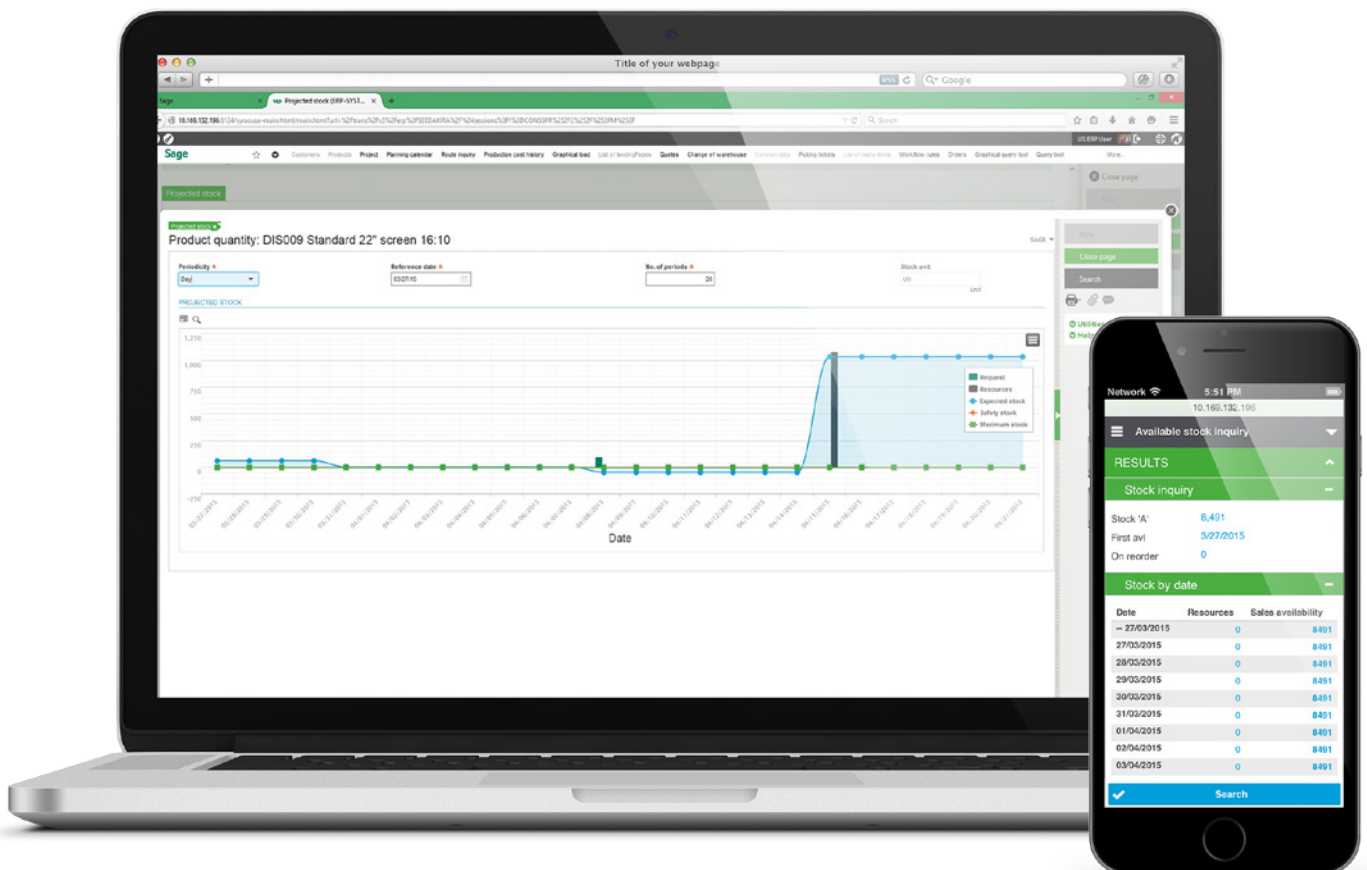
Flexible and easily scalable to support your entire business

Enterprise Management* offers powerful functionality that can be configured to meet your unique way of doing business. Its flexible data model supports complex organizational deployment and reporting structures, simplifying management across multiple facilities, companies or business units, regions and countries from a common installed instance of the solution.

Optimizes inventory across multiple warehouses and locations.

Scalable multi-tier architecture ensures virtually unlimited capacity.

Simple to manage with limited IT, in the cloud or deployed on the infrastructure of your choice.



* Enterprise Management was formerly known as Sage X3

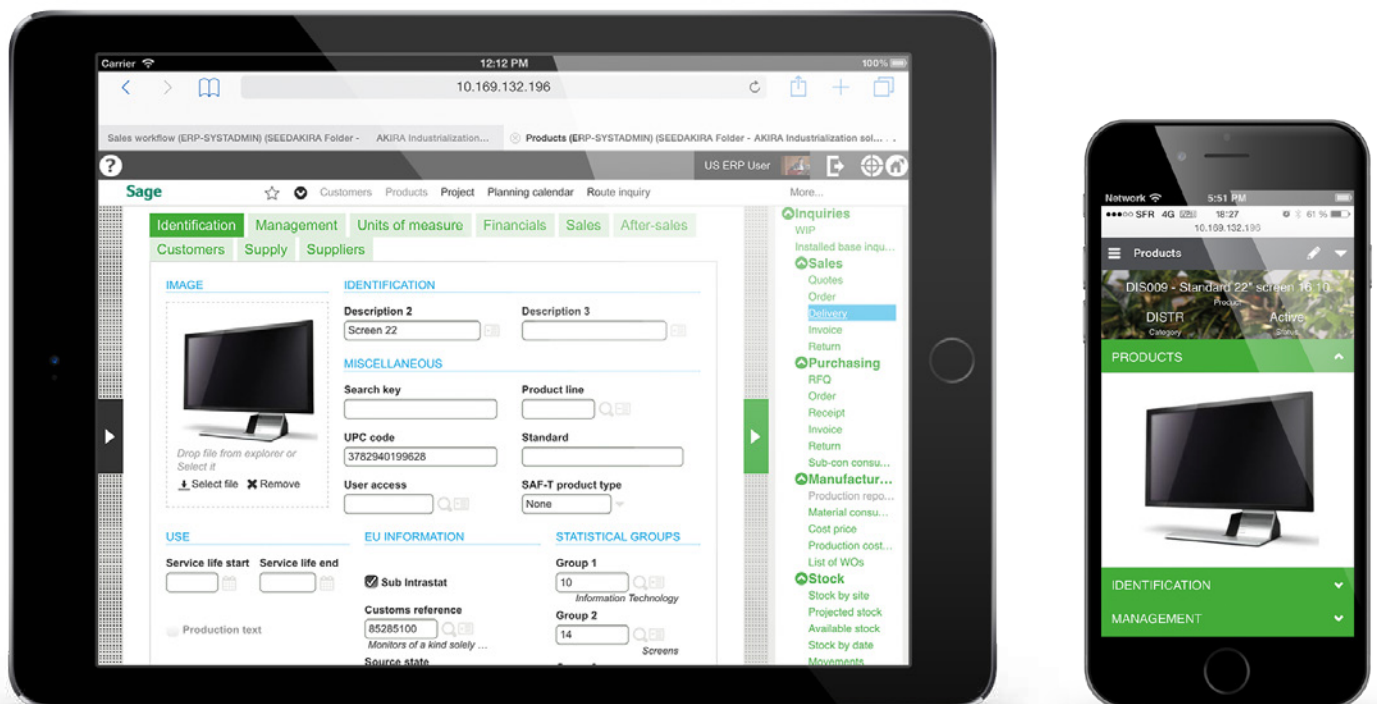
Personalized Web and mobile user experience

Enterprise Management* introduces a better, more personal user experience with secure web and mobile technology at its core. Whether that's at the office or on the go, users can access the data they need, in an intuitive interface, personalized to their role and preferences.

Designed to be easy to use and responsive on Android and iOS smartphone and tablet devices.

Mobile and web deployment enables access to common enterprise data from anywhere and on any device.

HTML5 interface ensures intuitive browser experience and allows for extensive personalization by users.



* Enterprise Management was formerly known as Sage X3

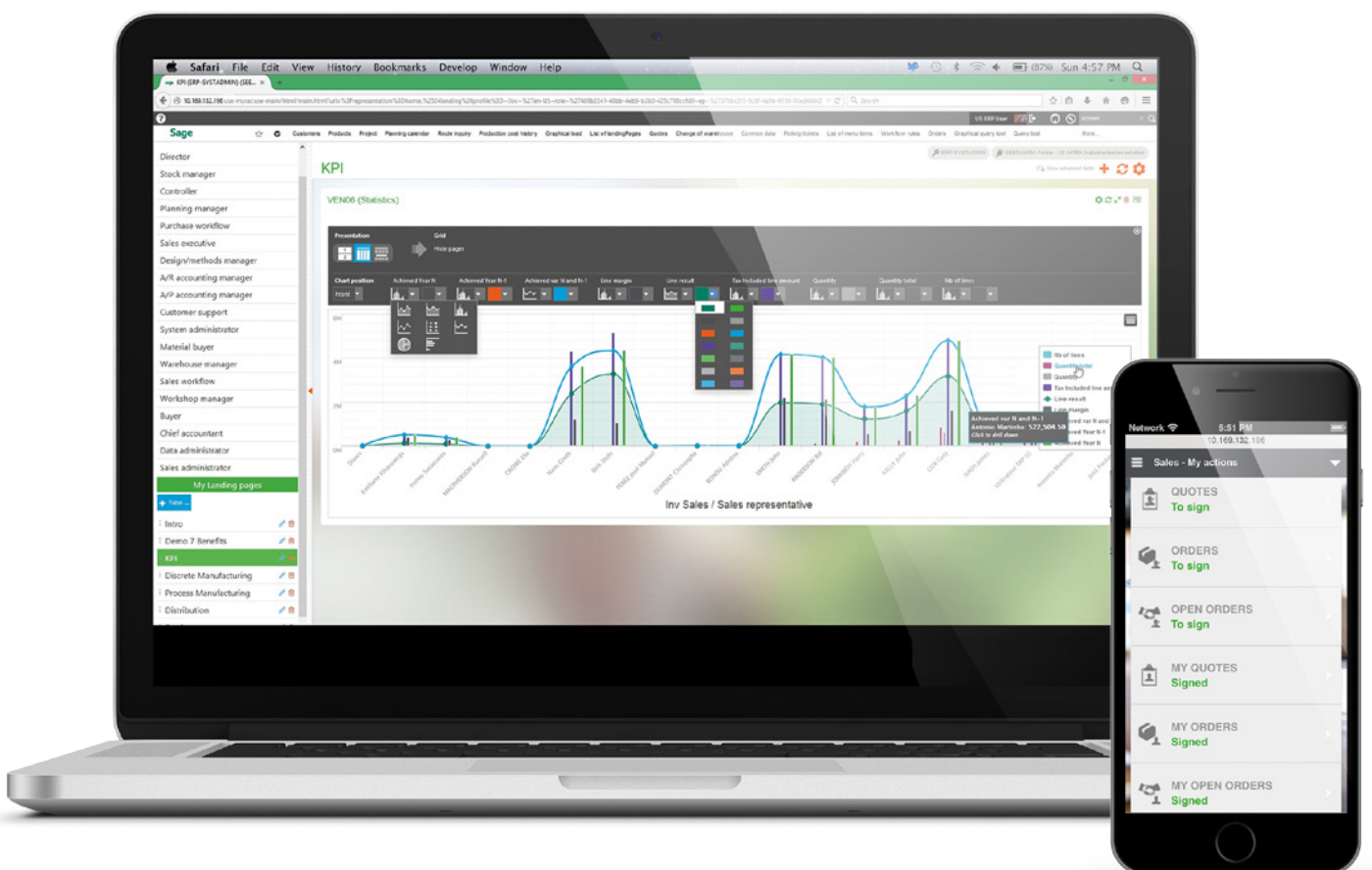
Ready to manage all your financials and operations

Enterprise Management* offers rich functionality to support all your core business processes with minimal IT investment and resources. Accelerate your business processes management with robust analytics and web apps.

Integrated management across purchasing, inventory management, manufacturing, sales, customer service, accounting and finance.

One solution with powerful workflow automation to accelerate business processes and better control performance across all areas of the business.

Built-in analytics for deeper insight into operations, accelerating reporting, communications and decision-making.

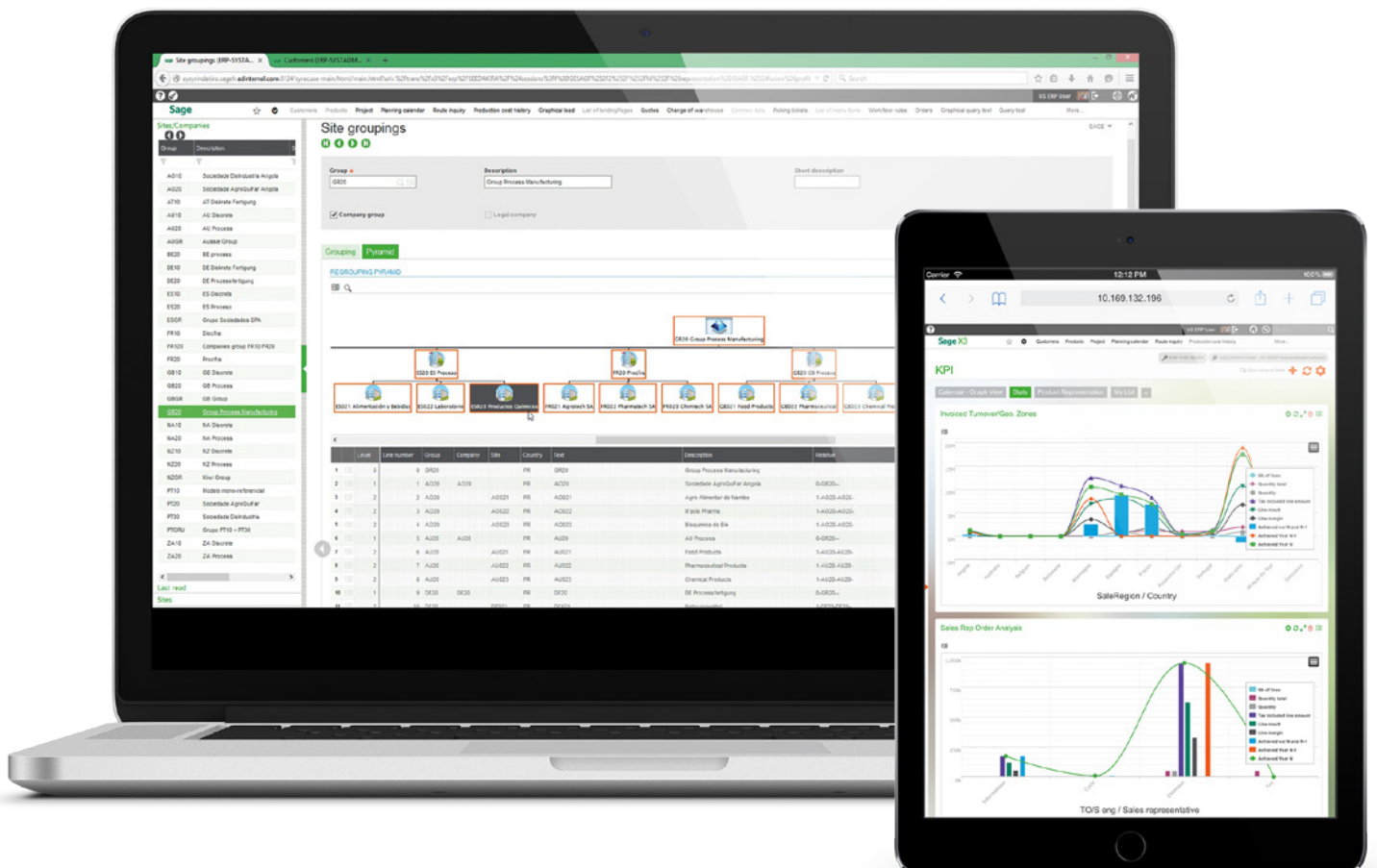


* Enterprise Management was formerly known as Sage X3

Ready to grow a global business

Enterprise Management* eliminates the complexity of managing an international business. It simplifies the management of international trade – suppliers, contractors, partners and customers (multi-language, multi-currency) – and can manage a global business from one common installed instance (global compliance, multi-legislation, multi-ledger).

See everything from every location in one single instance.



* Enterprise Management was formerly known as Sage X3

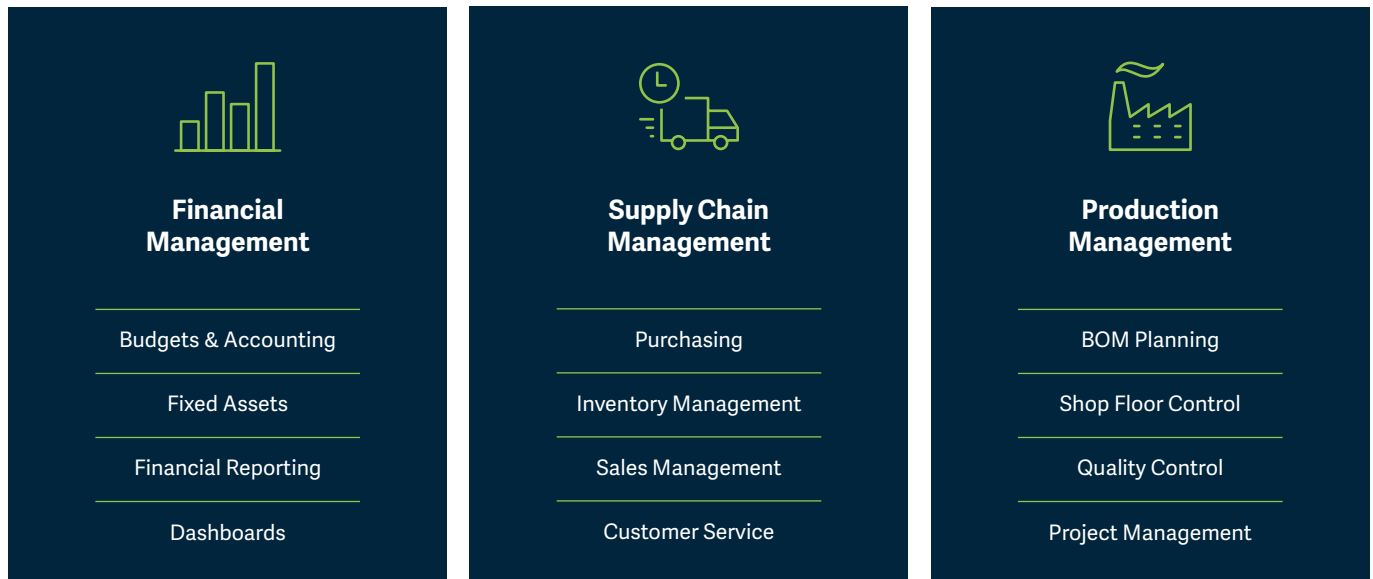
“Our field agents used to service four customers per day. As we enabled them with mobile devices connected to Sage, this number doubled.”

Philippe Scemama, CEO, Adelya



Enterprise Management core business management capabilities and technology

Enterprise Management* offers rich and integrated functionality to support all your core business processes with minimal IT investment and resources. From procurement to warehousing, production, sales, customer service and financial management, Enterprise Management introduces better way to manage your entire business, on a global scale.



Cloud  Mobile    Windows 10

* Enterprise Management was formerly known as Sage X3

Ready to manage all your financials and operations

Transform how your company competes and grow with a faster, simpler and flexible business management, at a fraction of the cost and complexity of typical enterprise ERP systems.

Financial Management

Budgets and Accounting

- General ledger with multiple charts of accounts
- Accounts payable, accounts receivable
- Cash flow management
- Bank management
- Cost and analytical accounting
- Expenditures
- Budget and commitments

Fixed Assets

- Numerous depreciation models
- Fixed asset lifecycle with traceability of capital expenditure
- Interim statements and closing
- Fixed asset stock count and financing
- Franchised asset management
- Financial reporting and dashboards

Financial Reporting

- Real-time analytics, alerts and notifications
- User-defined dashboards based on trigger events
- Configurable inquiries on any data table, with automatic or manual joins, sorting and selection
- Inquiries to search and filter predefined data collections using a variety of prebuilt parameters
- Library of over 400 reports supplied as standard, including legal reports

Supply Chain Management

Purchasing

- Supplier and product category management
- Pricing and discounts
- Purchase planning, ordering, and requests
- Purchase orders, delivery, and scheduling
- Requests for proposal
- Open orders, budget accounting
- Multi-level signature management
- Supplier invoice entry and returns

Inventory Management

- Product data and multiple units of measure
- Location management
- Inventory balances
- Quality control and sampling
- Replenishment, inter-site transfers
- Order release
- Stock movements
- Import tracking
- Mobile apps

Sales Management

- Product configurator, options, and variants
- Pricing and discounts
- Sales commissions
- Quotes, contracts, and open orders
- Multi-level credit checking and order entry
- Order preparation, delivery, packing, and shipping
- Customer returns
- Invoicing and reminders
- Inventory inquiries and allocations

Production Management

BOM planning

- Multi-bill of materials (commercial, production, sub-contracting, etc.)
- Current bills of material
- Mass maintenance
- Manage changes on a product and bill of materials
- Version number management (major and minor version)

Shop floor control

- Collection of labor time
- Direct labor (setup and run)
- Indirect labor (breaks and indirect time)
- Actual and elapsed time
- Multi-tasking (synchronized or unsynchronized)
- Automatic breaks
- Time and attendance (Clock in/out)
- Indirect Time Entry (Clock in/out)
- Break Time Entry (Clock in/out)
- Team Entry
- Shop Floor Tracking Workbench

Quality control

- Batch and sub-batch number management
- Serial number management
- Use-by date management
- Stock status management: accepted, rejected, inspected
- Re-inspection date management
- Stock sub-status management
- Quality control record creation
- Quality control procedures with analysis request
- Expiry date management
- Upstream and downstream traceability management

Project Management

- Project Work and Product Breakdown Structure
- Multi-level description of the tasks, preparing the operational and manufacturing process
- Project Cost Breakdown Structure (CBS) Multi-level description of budgets, allowing the project cost follow-up
- Employee assignments
- Advanced project duplication function
- Financial follow-up function to monitor the budget and expenses of projects
- Time entries to enter the time spent on a project at the operation, task and budget level

General

Collaboration

- Document and revision management as part of the business workflow
- Sharing by user, role, and project teams with tag management
- Document saving with drag & drop to Enterprise Management and online storage
- Insert charts and data directly to PowerPoint or Word and synchronize data
- Export to Excel and synchronize data
- Integrate with Microsoft Outlook for contacts, calendar and tasks

Workspace

- Personal home page gives the user an overview of critical data and guidance to perform common tasks for the role, with visual process maps.
- Personalized by user or administrator, based on security rules in place for the role and user.
- Enables access to relevant data, inclusion of internal dynamic data, statistics in table or graph format, calendars, favorites menus, shortcuts to external URLs, notes, and documents.

Mobile

- Easy to use and responsive on Android and iOS smartphone and tablet devices
- Mobile and web deployment enables access to common enterprise data from anywhere and on any device
- HTML5 interface ensures intuitive browser experience and allows for extensive personalization by users

"If you understand the power of data in your business decision making, you'll instantly see the value in this tool. Sage allows companies with vision to realize that vision. It allows us to run a smarter, more strategic business."

Mike DePasquale, Group Enterprise System Manager, Avon Rubber p.l.c.





Business Cloud

Enterprise Management

sage.com/enterprisemanagement