

PTZOptics OSD Remote Application



PTZOptics Cam...

PTZOptics Camera OSD Remote

Camera IP Address:

192.168.100.88

Camera Name(optional):

Save

Saved Cameras:

Load

Remove Preview ● Connect

↑

← OSD →

Back ↓ Enter



Welcome friend of PTZOptics!

Why was this application created?

The PTZOptics Camera OSD Remote application allows you to take control of the OSD, On Screen Display menu, capabilities of the camera without requiring an IR Remote, a joystick controller or the web interface of the camera.

While the application was designed to allow quick changes within your favorite production software it also features a “live preview” option to make adjustments without additional software.

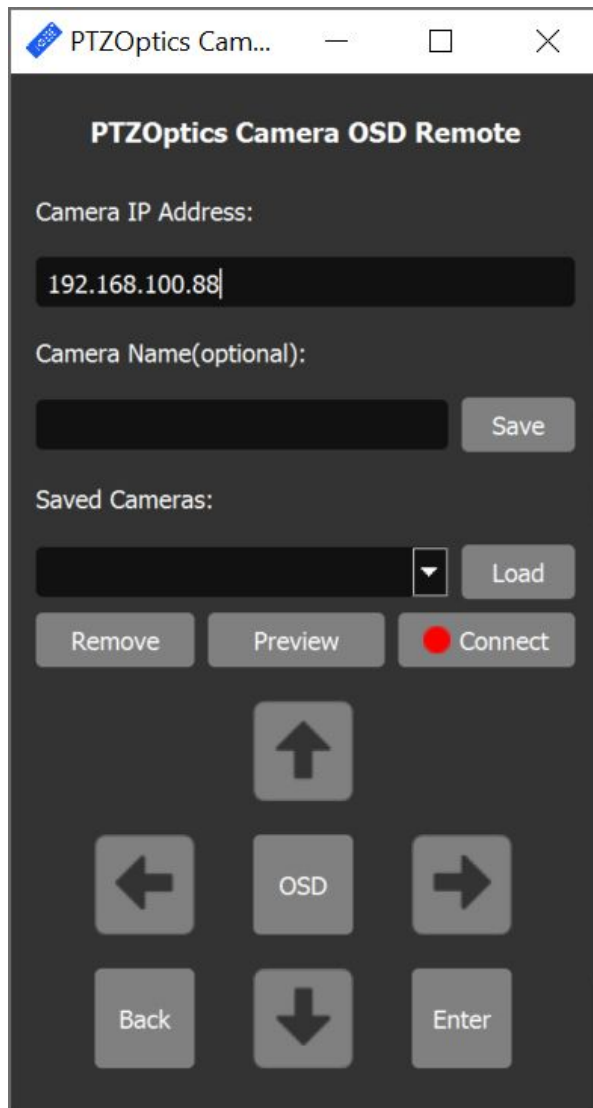
Requirements for using the PTZOptics Camera OSD Remote application

- (1) **Windows 10 PC**
 - *Connected wirelessly or wired to the same network as the camera*
- (1) **PTZOptics Camera with network connectivity**
 - *Connected wirelessly or wired to the same network as the PC*
 - **The IP address of the PTZOptics camera** on your network
- **TCP/IP Network**

Now let's take a moment to get introduced to basic operation of the OSD functions that the PTZOptics Camera OSD Remote offers...

General OSD Menu Operation

We'll cover your options for getting connected to your camera in the following sections but let's first take a moment to understand the basic operation of the OSD using this application.



Using the buttons mentioned below you'll be able to quickly gain control over a PTZOptics cameras OSD menu.

OSD (button)

Click this button, once connected, to toggle the cameras OSD menu on or off.

D-Pad (buttons)

Use the Up / Down Arrow buttons to make menu selections and the Left / Right Arrow buttons to make configuration adjustments.

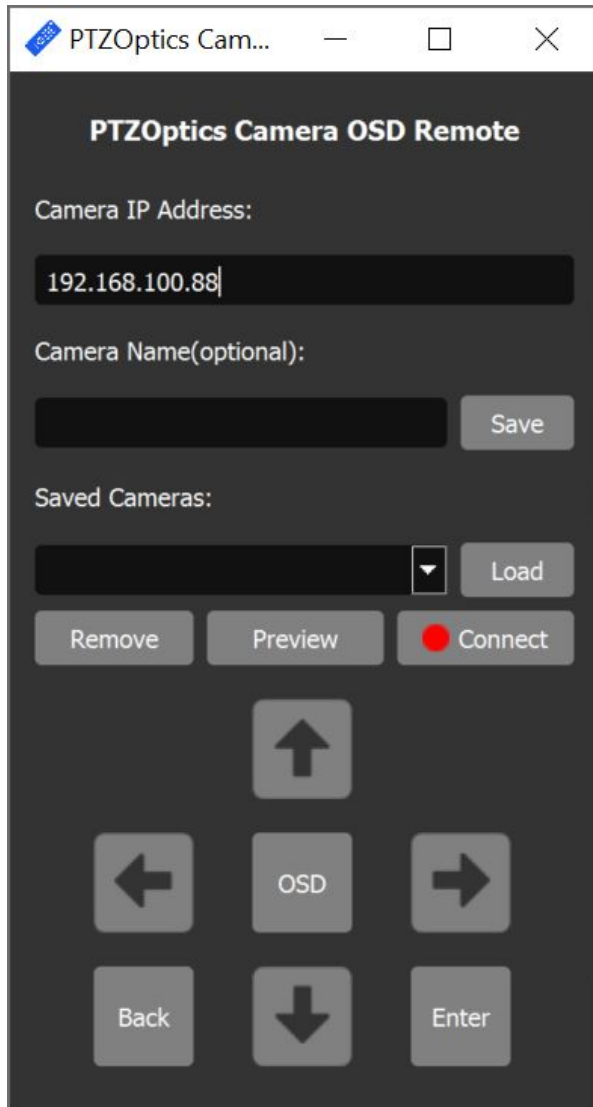
Back & Enter (buttons)

Use the "Enter" button to select a menu option and the "Back" button to return to the previous OSD menu options

Now let's take a moment to learn the different ways of using the PTZOptics Camera OSD Remote application to connect to a camera...

Quick Connections for Simple OSD Adjustment

If you don't need to save the camera for future use and don't require a live preview then operation of the application will be a breeze.



Using the text fields and buttons mentioned below you'll be able to quickly connect to a PTZOptics camera.

Camera IP Address (text field)

This is where you need to enter the current IP address assigned to the PTZOptics camera you wish to control the OSD menu.

Connect / Disconnect (button)

Once you have entered your cameras current IP address simply click the "Connect" button to initiate communication.

Note: Status light will go from "red" to "green" when a successful connection has been made.

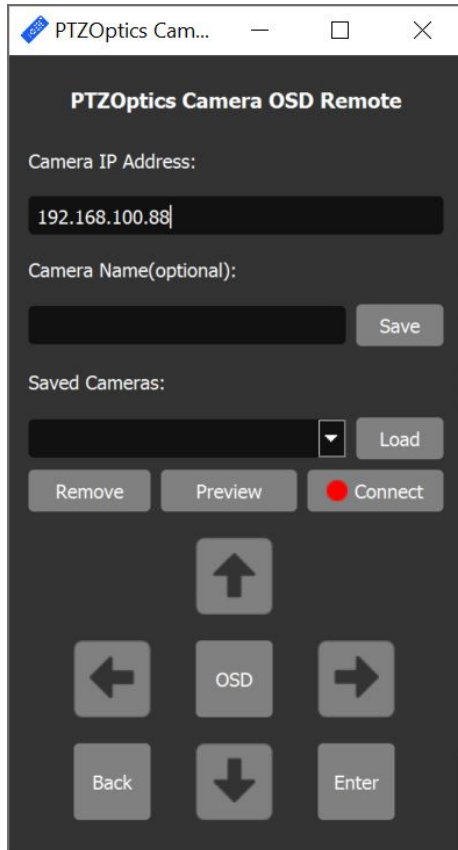
Click the button again to "Disconnect" when finished modifying the camera settings.

Once successfully connected to your camera simply following the instructions above, "**General OSD Menu Operation**," to begin modifying the camera settings.

Now let's take a moment to learn how to save a camera for future connections and adjustments...

Saving Camera(s) for future OSD Adjustment

If you want to “save” a camera for future connections the application is here to help.



Using the text fields and buttons mentioned below you'll be able to quickly save and connect to a PTZOptics camera.

Camera IP Address (text field)

This is where you need to enter the current IP address assigned to the PTZOptics camera.

Camera Name (text field)

This is where you can provide a custom name for your camera to make locating easier in the future.

Save (button)

This button will add the current IP Address and associated name to the “Saved Cameras” drop down menu

Remove (button)

This button will remove the currently selected “Saved Camera” from the drop down menu.

Load (button)

This button will recall the currently selected “Saved Camera” from the drop down menu for connection when ready.

Connect / Disconnect (button)

Once you have loaded the desired camera simply click the “Connect” button to initiate communication.

Note: Status light will go from “red” to “green” when A successful connection has been made.

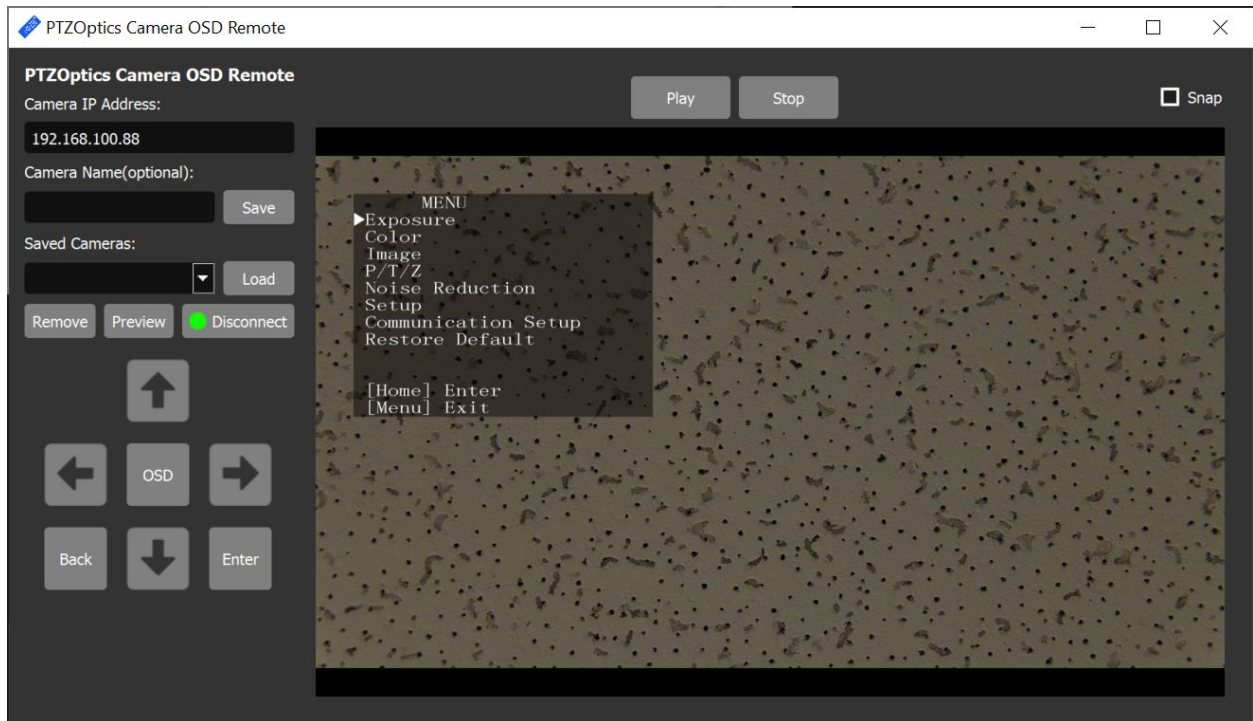
Click the button again to “Disconnect” when finished modifying the camera settings.

Once successfully connected to your camera simply following the instructions above, **“General OSD Menu Operation,”** to begin modifying the camera settings.

Now let's take a moment to see how the “Preview” option works in the event you are not already viewing the camera video stream...

Using the built-in live “Preview” capabilities...

If you are not already viewing the video from the camera you wish to modify settings on you can use the PTZOptics Camera OSD Remote to also view the video feed.



Once you have successfully connected to a PTZOptics camera you can click the “Preview” button to open a separate panel that will allow you to view the current live feed from the camera and view the OSD Menu as you make adjustments.

You can click the “Stop” button to end the live video preview from the camera, and “Play” to re-initiate the live preview.

If you want the “Preview” pane to “snap” or connect to the main application click the “snap” checkbox in the top-right of the preview window.

When you have finished using the live “Preview” pane you can simply click the “x” to close that pane from the top-right corner when not “snapped”

Note: This option is only meant to be utilized when you are NOT already previewing the cameras IP video feed in another location or interruptions to complete inaccessibility of the live video stream may occur.