

# PRODUCT OVERVIEW

Bractlet provides a software and intelligence solution to commercial office owners that optimizes building performance and increases portfolio returns.



**1B +**  
DATA POINTS TRENDLED  
EACH MONTH



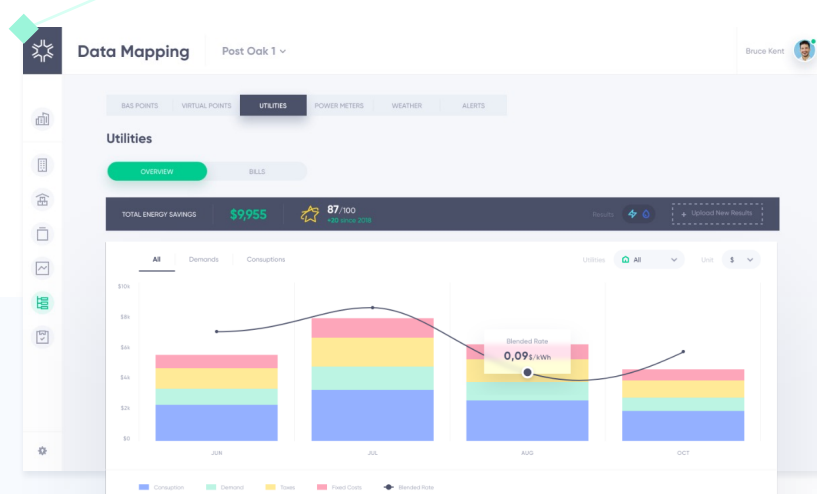
**1k+**  
PROJECTS EVALUATED



**30M FT<sup>2</sup> +**  
CLASS A OFFICE  
ON THE PLATFORM

**Bractlet's tiered offerings provide owners and property teams the flexibility to select the product features and depth of analysis they need based on their investment strategy and budget.**

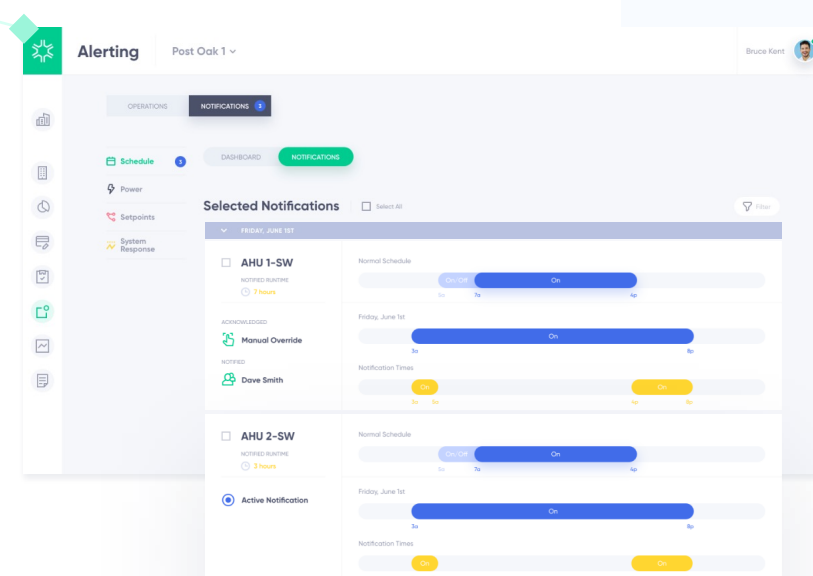
Owners can get started with  
**any of the three tiers:**



## Benchmark

The quickest and easiest way to get started with Bractlet, *Benchmark* collects, organizes and stores utility bill and weather data in a user-friendly format plus provides energy consumption benchmarks versus comparable buildings. It also enables the seamless storage and upload of EnergyStar, LEED, and GRESB data.

- Utility and weather data collection, processing and storage for energy, water, waste
- Energy efficiency benchmarks
- Energy Star, LEED and GRESB data storage & upload



## Analytics

In addition to *Benchmark* features, *Analytics* provides real-time building performance analytics with comfort, equipment operation and energy consumption notifications, diagnostics and prescriptive actions.

- IoT data trending from BAS, utility meter, and optional equipment power meters
- Building and equipment level performance dashboards
- Comfort, equipment operation, and energy consumption notifications and diagnostics



## Simulation

*Simulation* includes all the functionality of *Benchmark* and *Analytics*, while offering the industry's only true "digital energy twin" building simulation. It produces the most predictive building performance forecasts to aid in the identification, evaluation and implementation of building optimization and upgrade projects across portfolios.

- Digital energy twin creation
- Building performance analysis vs predictive baselines
- Project identification and evaluation
- Project implementation support including bidding and commissioning tools
- Project performance verification



TO LEARN MORE

**bractlet.com**



TO GET STARTED TODAY

**info@bractlet.com**