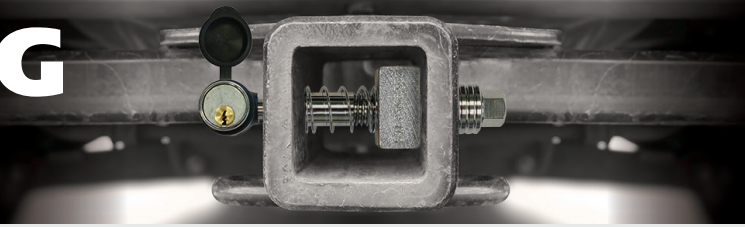


SILENT TOWING PRODUCTS

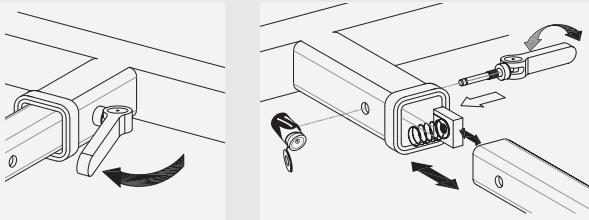


SilentACT™ Accessory Control Technology™

Our SilentACT Accessory Control Technology offers no-tool required support of hitch accessories including bike and cargo racks, hitch steps, etc, that are not being towed. New cutting-edge designs for both US and metric threading standards offer security, user-friendly convenience, and accessibility in tight hitch spaces. SilentACT is not warranted for towing use.



Part No. SHP2082



Silent ACT (US standard threading/racks)

- Integrated handle and rotating cam action tightens down pin
- Corrosion resistant chrome coated steel pin, polyurethane and stainless steel washers
- Zinc coated spring nut for engagement in hollow shank tubes (pin will only fit standard threading in racks having welded bushings inside)
- 90 degree keyless snap-on lock for access in tight spaces
- Water-tight rubber jacket with dust cover for easy grip and corrosion protection
- Set of stainless steel, rubber capped keys

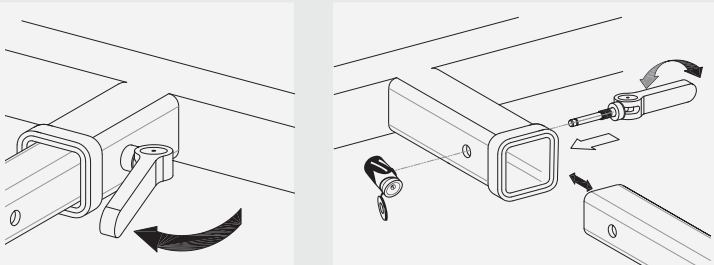
Supports: 1.25in, 2in. Hitch Receivers

Packaging:

Clam Pack	<input type="checkbox"/>
Card Pack	<input checked="" type="checkbox"/>
Bulk	<input type="checkbox"/>



Part No. SHP2083



Silent ACT (Thule 12mm metric threading/ racks)

This model is a no-tool upgrade for the performance and security offered with 12mm European style racks. Enjoy all the features of our US standard model, less the Spring Nut insert not included in this model (all Thule/European style racks include welded bushings in the shank tube with metric threading).

Supports: 1.25in, 2in. Hitch Receivers

Packaging:

Clam Pack	<input type="checkbox"/>
Card Pack	<input checked="" type="checkbox"/>
Bulk	<input type="checkbox"/>

