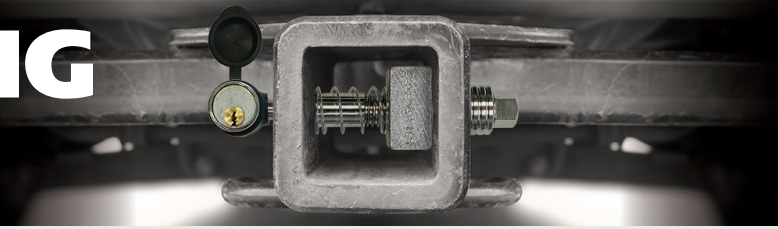
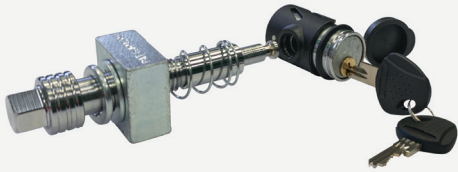


# SILENT TOWING PRODUCTS



## Silent Hitch Pin®

Industry *Best in Class* motionless towing devices for removal of shock loads and distracting noise in the hitch. Enjoy Safe and Silent Towing™ security with new models and design enhancements for 2018.



### Silent Hitch Pin®, 5/8 Barrel Lock

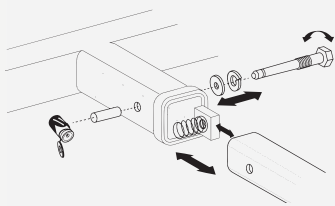
Newly designed for next level accessibility and performance with corrosion resistant and self-lubricating finish, and heavy-duty 90 degree lock engineered to fit in ever smaller hitch spaces.

**Supports:** 2in Hitch Receivers  
**Tow Rating:** Class II, III, & IV

#### Packaging:

Clam Pack	<input checked="" type="checkbox"/>
Card Pack	<input type="checkbox"/>
Bulk	<input type="checkbox"/>

- Durable, corrosion-resistant chrome, stainless steel, and hot dip zinc components
- 90 degree keyless snap-on lock for no fumble access in tight spaces
- Water-tight rubber jacket with dust cover for easy grip and corrosion protection
- Set of stainless steel, rubber capped keys



Part No. SHP2040



Part No. SHP2040-XL

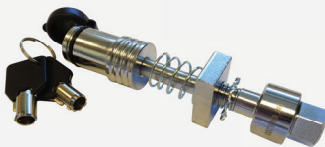
### Silent Hitch Pin-XL, 5/8 Barrel Lock

- Extra long to fit all new 2.5" GM and larger body Toyota hitches with a full 2.54" clearance span.
- Inline lock with dust cap, set of keys

**Supports:** 2.5in Hitch Receivers  
**Tow Rating:** Class II, III, & IV

#### Packaging:

Clam Pack	<input checked="" type="checkbox"/>
Card Pack	<input type="checkbox"/>
Bulk	<input type="checkbox"/>



Part No. SHP2080

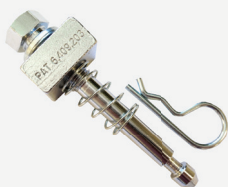
### Silent Hitch Pin, 1/2 Barrel Lock

- Compact design supports 1.25" receivers with Class I, II tow ratings
- Inline lock with dust cap, set of keys

**Supports:** 1.25in Hitch Receivers  
**Tow Rating:** Class I, & II

#### Packaging:

Clam Pack	<input checked="" type="checkbox"/>
Card Pack	<input type="checkbox"/>
Bulk	<input type="checkbox"/>



Part No. SHP359 (Card) & SHP154 (Bulk)

### Silent Hitch Pin, 5/8 Pin & Clip

- Economical models available in both bulk and retail packaging

**Supports:** 2in Hitch Receivers  
**Tow Rating:** Class II, III, & IV

#### Packaging:

Clam Pack	<input type="checkbox"/>
Card Pack	<input checked="" type="checkbox"/>
Bulk	<input checked="" type="checkbox"/>