

60 CHELSEA PIERS

AT ELEVENTH AVENUE AND WEST 19TH STREET

JOIN TENANTS:

- BOWLMOR LANES
- SKY RINK
- SUNSET TERRACE
- MARINEMAX
- SPIRIT CRUISES
- BATEAUX NEW YORK
- CLASSIC HARBOR LINE
- THE LIGHTHOUSE
- PIERS PIZZA COMPANY
- FRESH & CO.
- EVOLVE BARRE STUDIO
- GOLF CLUB
- CHELSEA PIERS FITNESS
- PIER SIXTY EVENTS
- FIELD HOUSE



**NEW YORK'S ULTIMATE
PLAYGROUND**

PROPERTY DETAILS

60 CHELSEA PIERS

AT ELEVENTH AVENUE AND WEST 22ND STREET

PREMISES; PIER 60

Suite 6020: 10,450 sq ft
Outdoor Deck: 100 sq ft

POSSESSION

Immediate

CEILINGS

~22 Feet

TENANT

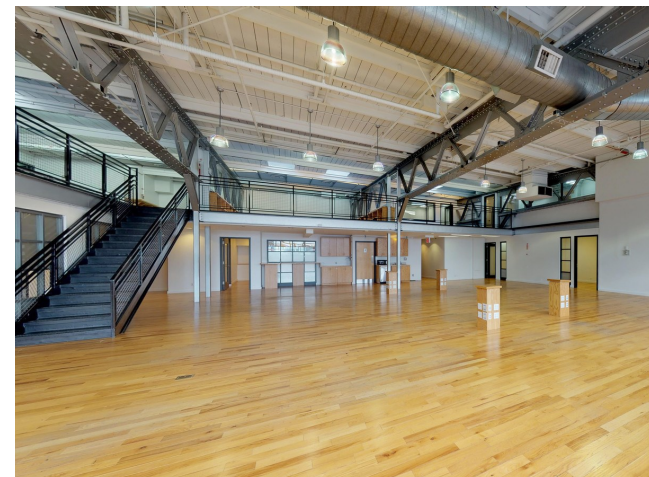
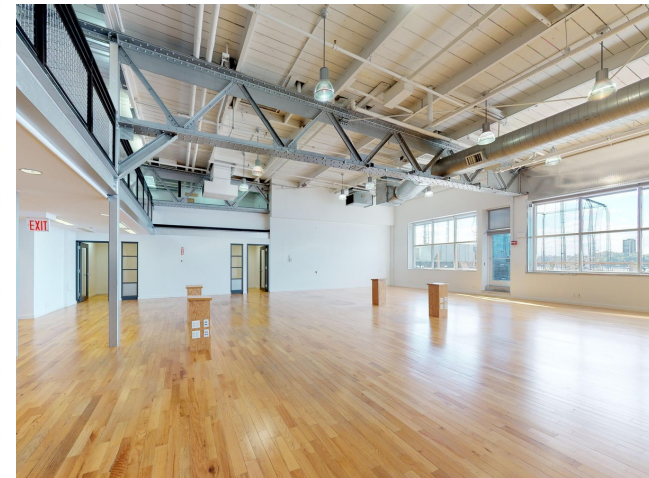
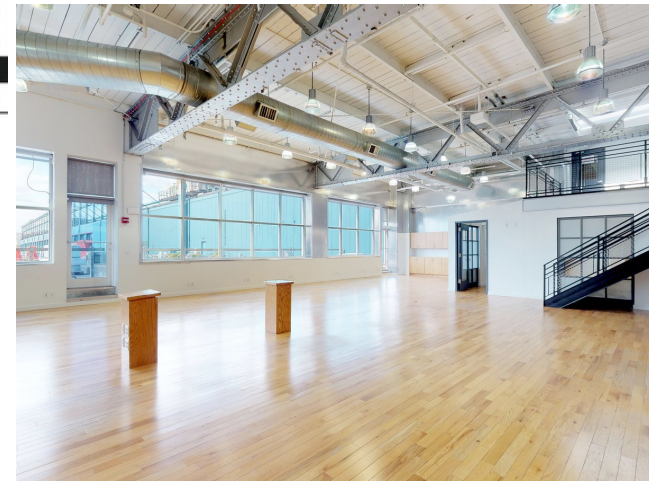
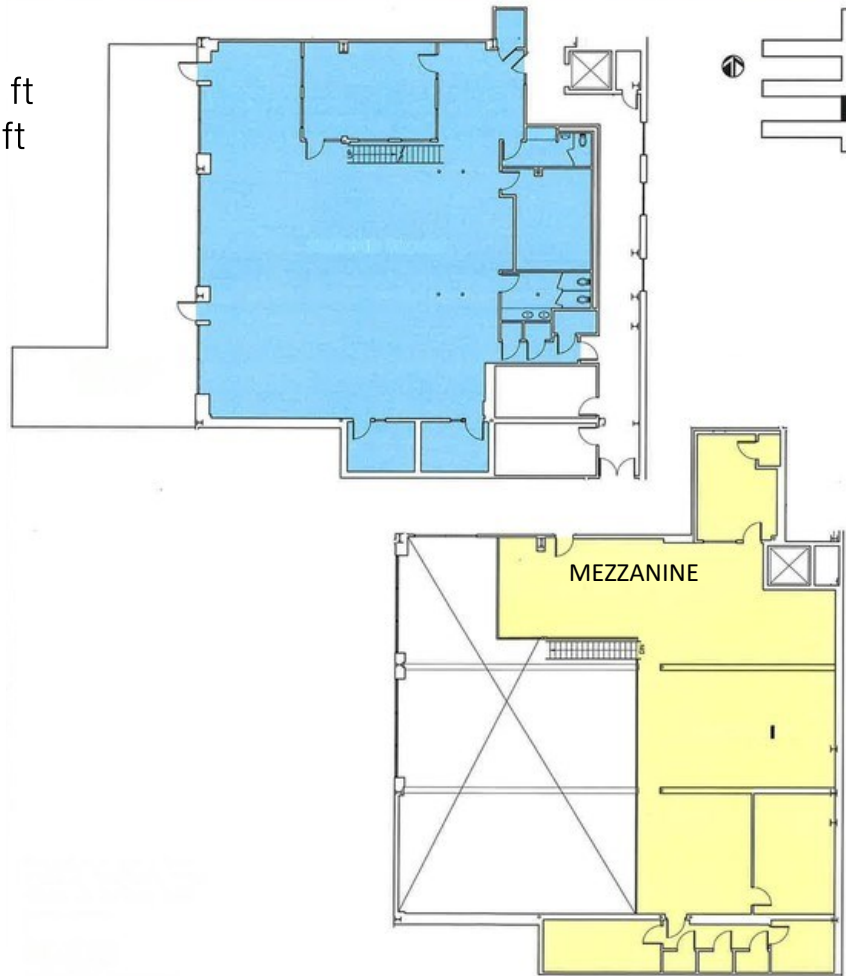
Previously Office

ASKING RENT

\$68 per sq ft

FEATURES

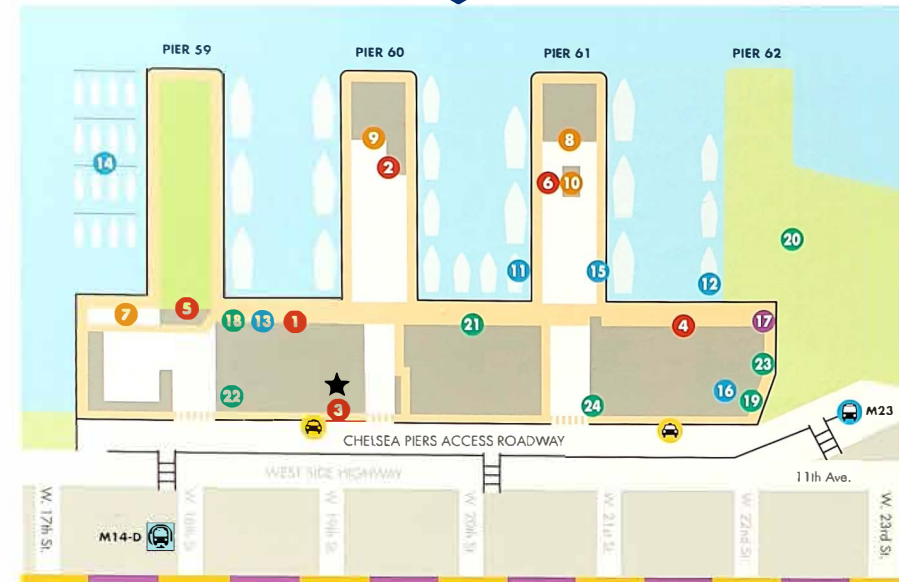
- On-Site Parking Available
- Lots of Natural Light
- Column-Free Space
- Tenant-Controlled HVAC
- Access to Chelsea Piers Recreational Amenities
- Close to The High Line, Google, Chelsea Market, and Hudson River Park
- Private Outdoor Terrace with Breathtaking Views of the Hudson River





CHELSEA PIERS NEW YORK

EST.  1995



SPORTS VENUES

- Bowlmor Lanes 1
- Chelsea Piers Fitness 2
- Evolve Barre Studio 3
- Field House 4
- Golf Club 5
- Sky Rink 6

EVENT SITES

- Current 7
- The Lighthouse 8
- Pier Sixty 9
- Sunset Terrace (Enter at Sky Rink) 10

MARITIME CENTER

- Bateaux New York 11
- Classic Harbor Line 12
- MarineMax 13
- Spirit Cruises (Docking & Ticket Booth) 14
- Spirit Cruises (Offices) 15

RESTAURANTS

- Bowlmor Lanes (Bar and Grill) 16
 - fresh&co 17
 - Piers Pizza Company (Sky Rink) 18
- ## SPECIALTY SHOPS & SERVICES
- New York Golf Center 19
 - Skater's Edge Pro Shop 20

ALSO AT CHELSEA PIERS

- Capital One Bank ATMs 21
- Chelsea Cove, Hudson River Park 22
- Corporate Offices 23
- History Wall 24
- Pier 59 Studios 25
- Public Restrooms 26
- Security (24-hrs.) 27

