



SUBLEASE AVAILABLE

505 Fifth Avenue

- Fully Furnished, Move-In Ready Plug & Play
- Newly Built with High-End Finishes, Never Been Occupied
- Floor-to-Ceiling Windows
- Bryant Park Views
- Top Creditworthy Sublandlord

Premises

Entire 19th Floor: 10,856 RSF

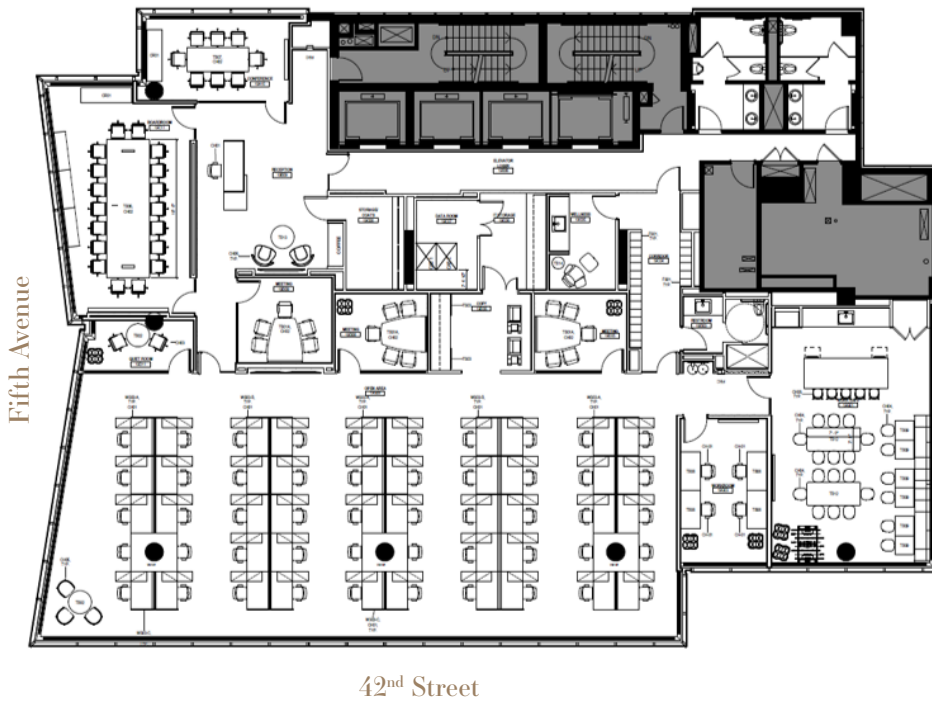
Availability

IMMEDIATE

Sublease Term

MARCH 2028

19th Floor Layout



Main Workspace:

- 44-50 Desks / Open Seating
- 2 Huddle Rooms (5 Seats ea.)
- 1 Breakout Room

Client-Facing Area:

- 1 Boardroom (18 Seats)
- 1 Medium Conference Room (8 Seats)
- 1 Small Conference Room (5 Seats)
- Reception

Amenity Space Featuring:

- Large Pantry / Café
- Lounge Area with Foosball Table, TV, etc.
- Private Restroom with Shower
- Wellness Room
- Lockers
- IT Room





