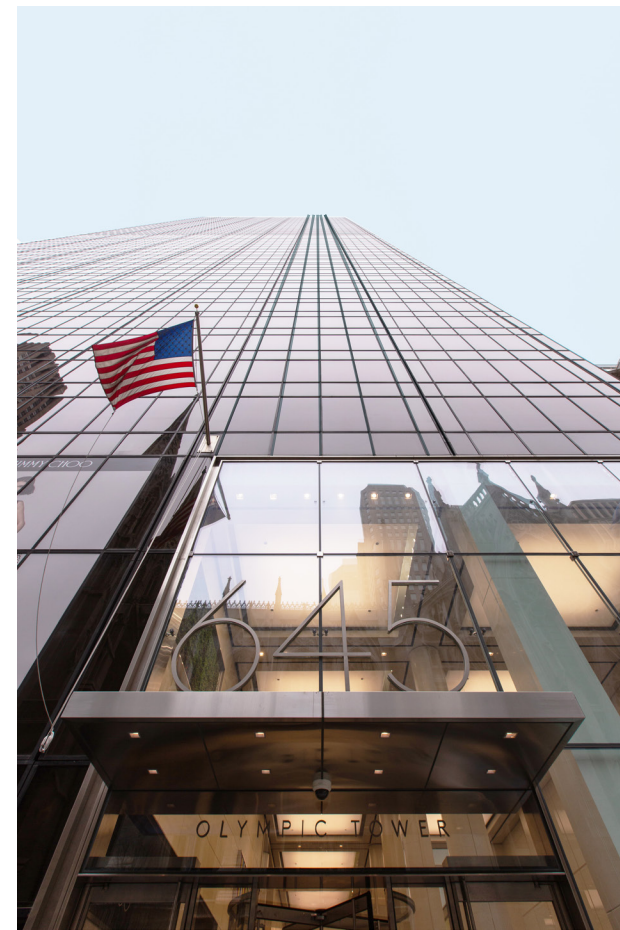


OLYMPIC TOWER

THE PIONEER OF EXCELLENCE

Rare Office Sublease Availability In Fifth Avenue's Iconic Tower

645 FIFTH AVENUE | NORTHEAST CORNER OF 51ST STREET



Available

| | |
|----------|-------------------|
| SUITE 9C | 2,791 square feet |
| SUITE 9D | 3,741 square feet |
| <hr/> | |
| TOTAL | 6,532 square feet |

Price

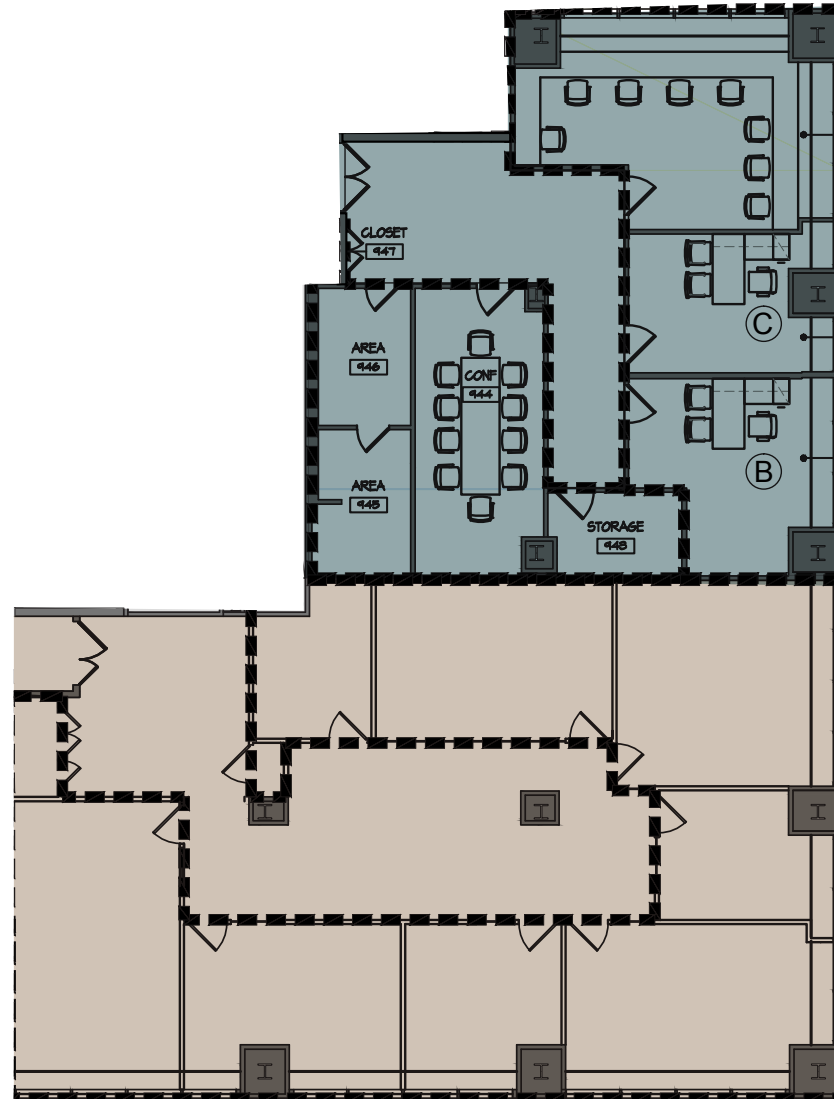
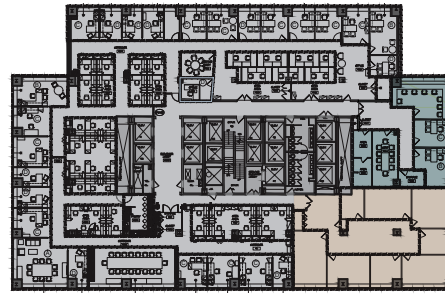
Upon Request

Term

Flexible—up to three years

Space Comments

- Suites can be combined or leased separately
- Each suite includes a mix of offices, conference rooms and open space
- Only Plug & Play opportunity in a fully occupied building



SUITE 9C
2,791 sf

SUITE 9D
3,741 sf



Interior Suite Photos





Building Comments

- Breathtaking views of the adjacent St. Patrick's Cathedral and Rockefeller Center
- Recent \$30MM refurbishment of the building's interior public atrium which now hosts Cipriani's Grano Café and Juice Bar
- Situated along one of the most prestigious retail corridors in the world

