

62

CHELSEA PIERS

AT ELEVENTH AVENUE AND WEST 22ND STREET

JOIN TENANTS:

- BOWLMOR LANES
- SKY RINK
- SUNSET TERRACE
- MARINEMAX
- SPIRIT CRUISES
- BATEAUX NEW YORK
- CLASSIC HARBOR LINE
- THE LIGHTHOUSE
- PIERS PIZZA COMPANY
- FRESH & CO.
- EVOLVE BARRE STUDIO
- GOLF CLUB
- CHELSEA PIERS FITNESS
- PIER SIXTY EVENTS
- FIELD HOUSE



**NEW YORK'S ULTIMATE
PLAYGROUND**

PROPERTY DETAILS

PREMISES; PIER 62

62 CHELSEA PIERS

AT ELEVENTH AVENUE AND WEST 22ND STREET

Penthouse Office; Suite 303P: 3,550 sq ft

Second Floor; Suite 203: 3,117 sq ft

POSSESSION

Immediate

CEILINGS

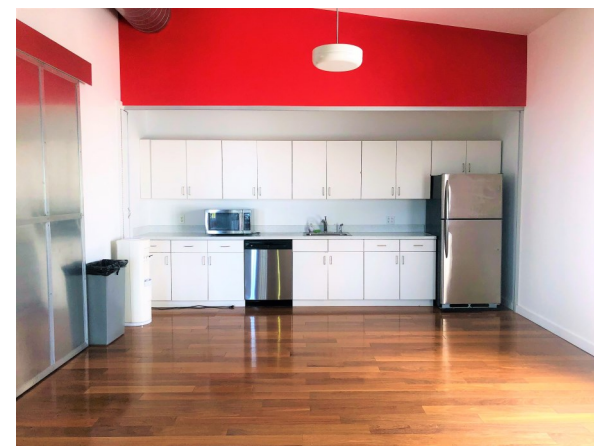
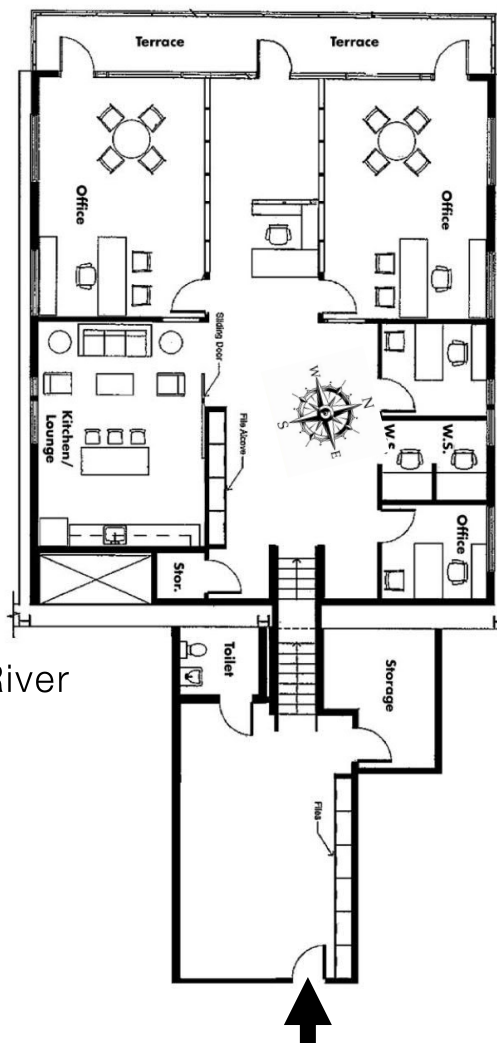
14 Feet

ASKING RENT

\$68 per sq ft

FEATURES

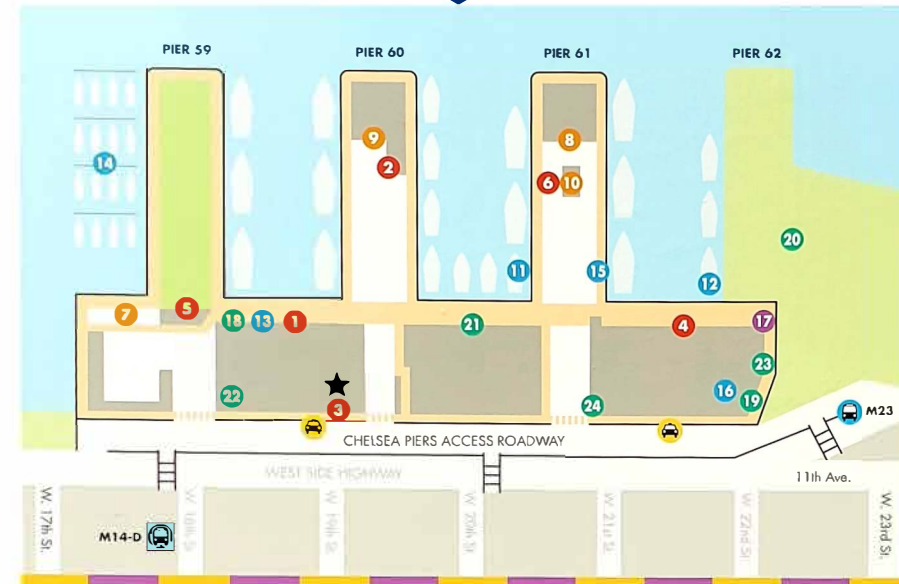
- Waterfront Location with Views of the Hudson River
- On-Site Parking Available
- Lots of Natural Light
- Column-Free Space
- Private Terrace Overlooking the Hudson River
- Kitchen and Conference Room
- Tenant-Controlled HVAC
- Close to The High Line, Google, Chelsea Market, and Hudson River Park
- Outdoor Terrace Overlooking the Hudson River





CHELSEA PIERS NEW YORK

EST.  1995



SPORTS VENUES

- Bowlmor Lanes 1
- Chelsea Piers Fitness 2
- Evolve Barre Studio 3
- Field House 4
- Golf Club 5
- Sky Rink 6

EVENT SITES

- Current 7
- The Lighthouse 8
- Pier Sixty 9
- Sunset Terrace (Enter at Sky Rink) 10

MARITIME CENTER

- Bateaux New York 11
- Classic Harbor Line 12
- MarineMax 13
- Spirit Cruises (Docking & Ticket Booth) 14
- Spirit Cruises (Offices) 15

RESTAURANTS

- Bowlmor Lanes (Bar and Grill) 16
- fresh&co 17
- Piers Pizza Company (Sky Rink) 18

SPECIALTY SHOPS & SERVICES

- New York Golf Center 19
- Skater's Edge Pro Shop 20

ALSO AT CHELSEA PIERS

- Capital One Bank ATMs 21
- Chelsea Cove, Hudson River Park 22
- Corporate Offices 23
- History Wall 24
- Pier 59 Studios 25
- Public Restrooms 26
- Security (24-hrs.) 27

