

Grand Central Location



555 FIFTH AVENUE

Part 15th Floor

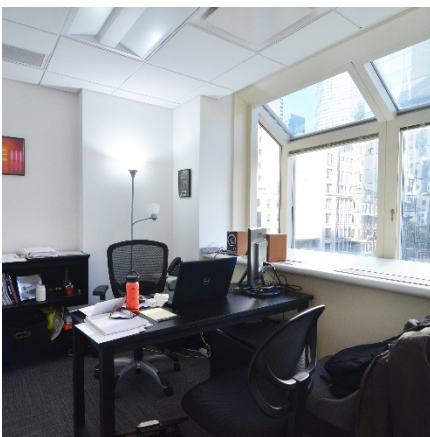
3,291 Sq. Ft.

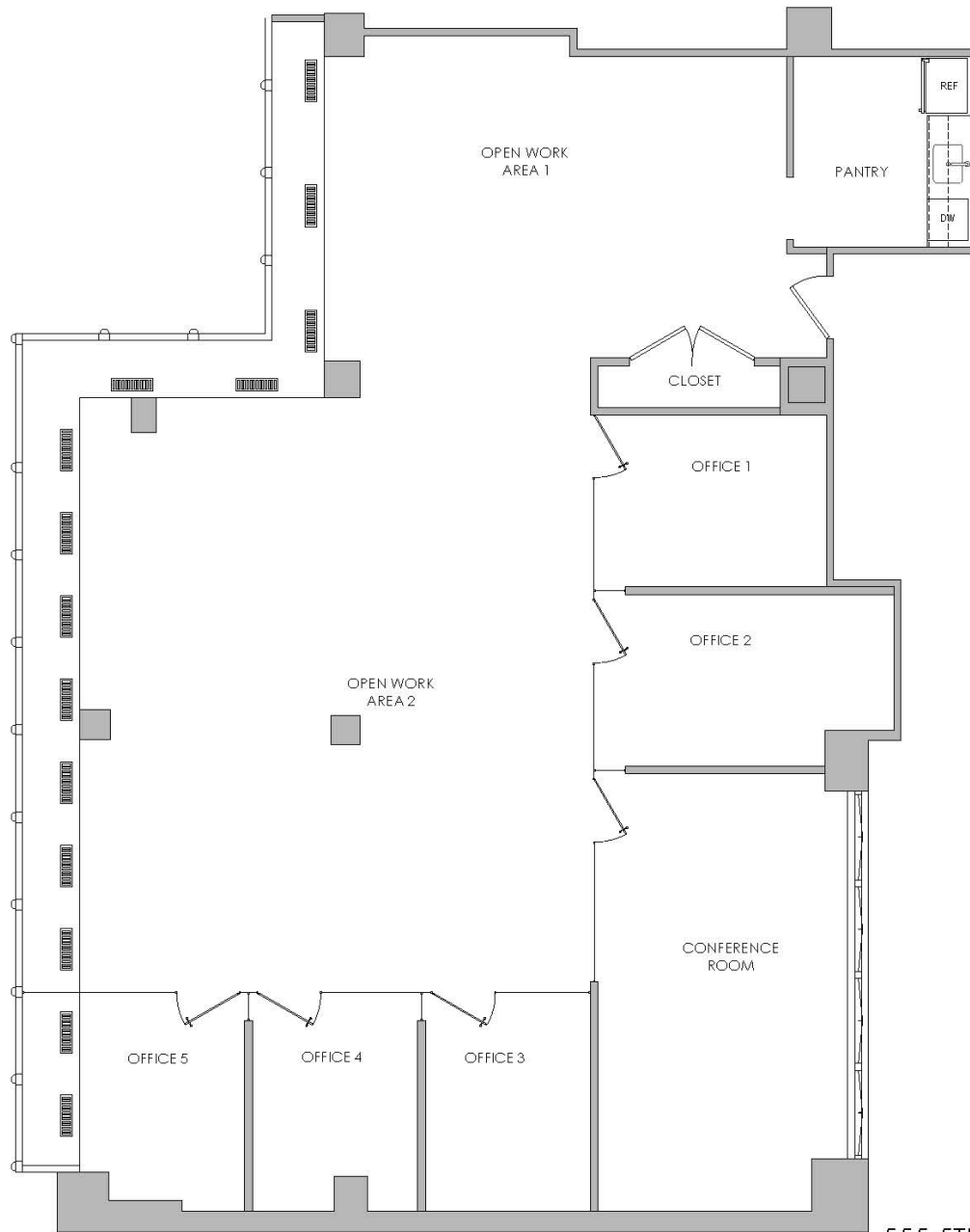
Available: Arranged

Suite 1501

Perfect for a multitude of uses. Convenient to all public transportation. 24/7 attended lobby. Owner occupied building.

- Sublet through 11/27
- 4 interior glass enclosed offices
- 1 windowed glass enclosed office
- 1 interior glass enclosed conference room
- Pantry
- 2 large open work areas





555 5TH AVE - SUITE 1501

SCALE: 1/8" = 1'-0"

AMENITIES at the Doorstep: 555 FIFTH AVENUE



B D F 4 5 6 6 7 7 S N Q R W 1 2 A C E

