

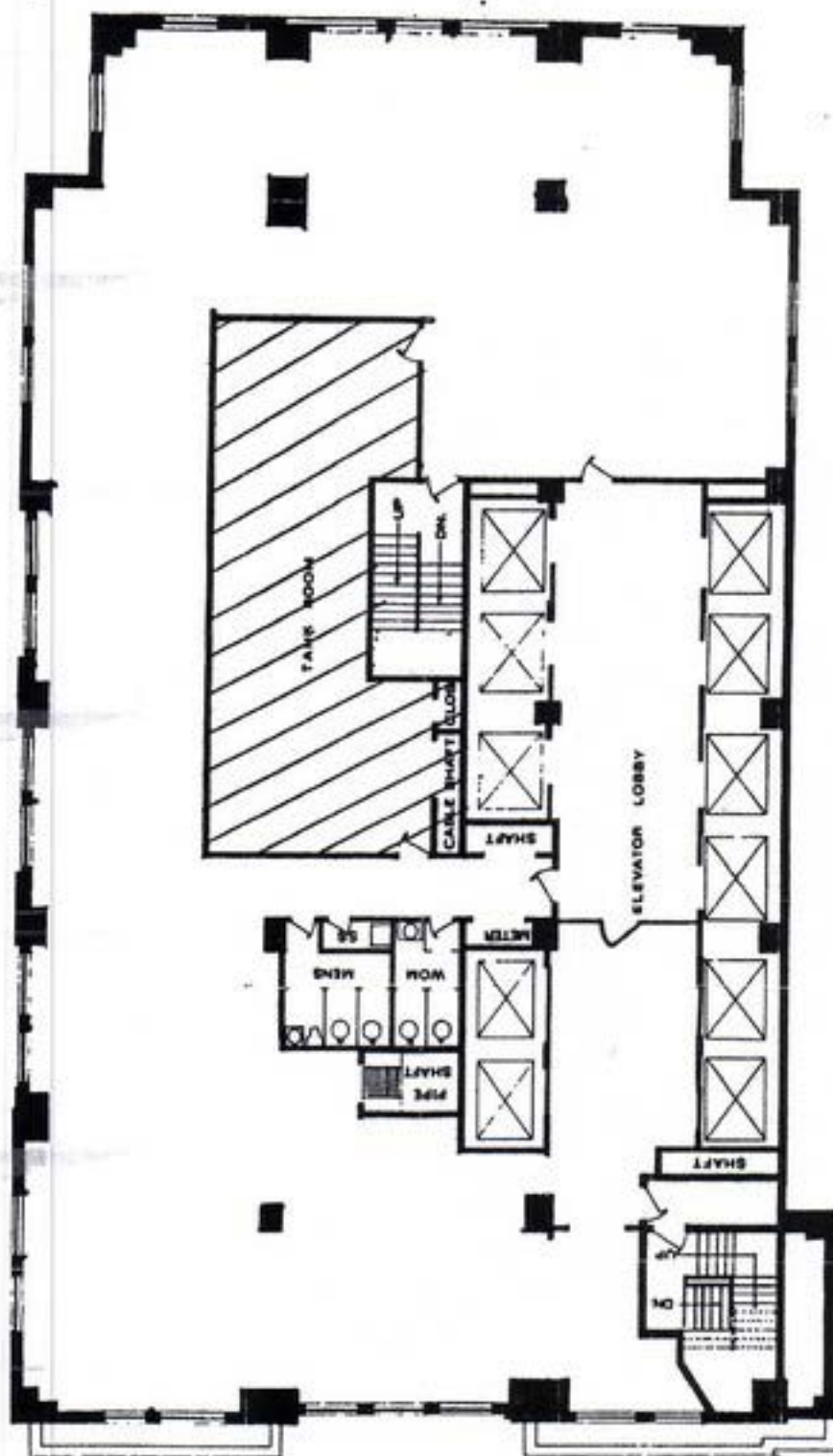


10 East 40th Street

New York, NY 10016

(between Fifth Avenue and Madison Avenue)

- Entire 24th Floor (7,650 sqft) 12 offices and open area
- Entire 23rd Floor (7,650 sqft) 10 offices and open area
- Available, July 2020 to August 2022...includes furniture.
- Only \$45 per sqft (plus CAM and tax)



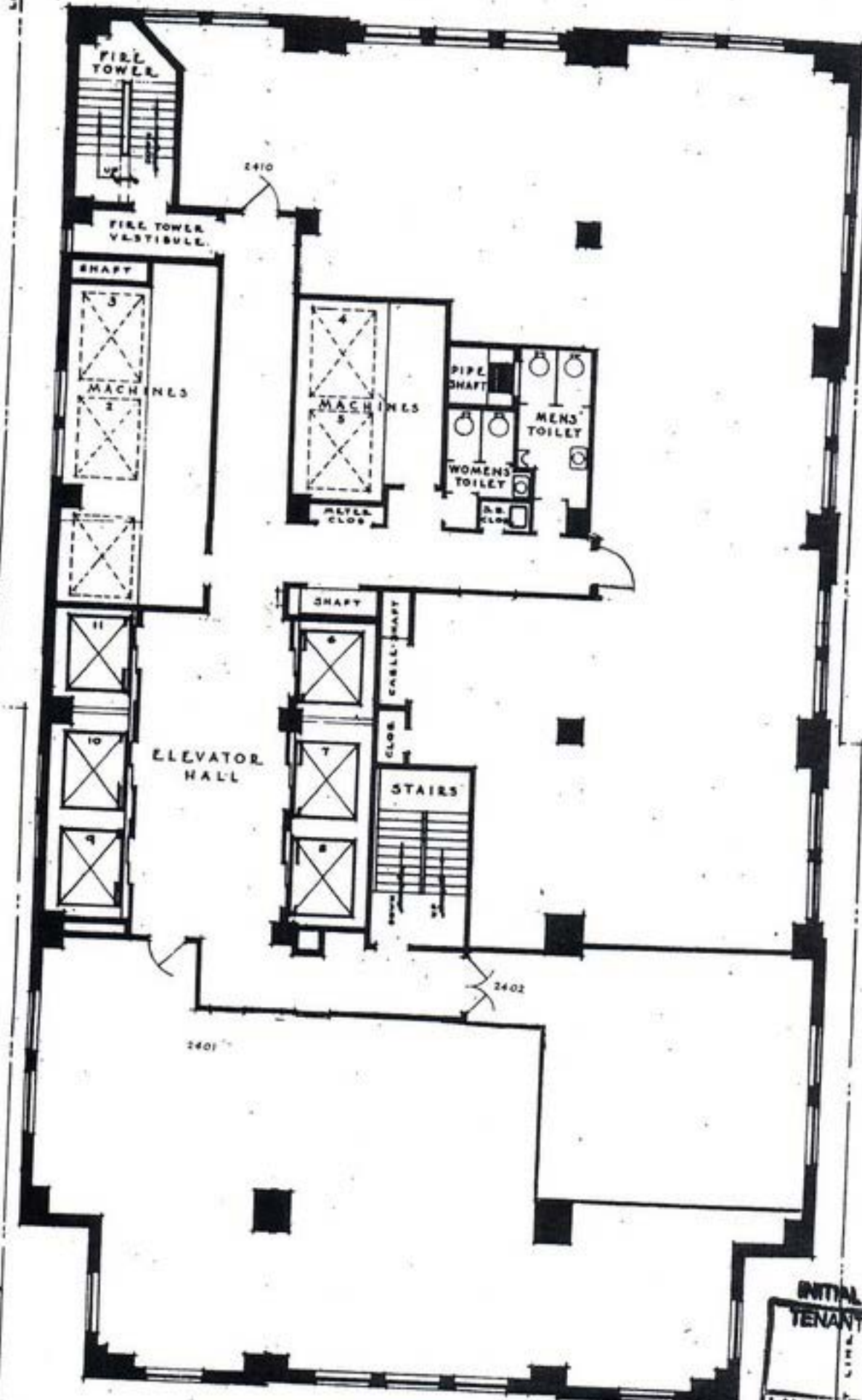
10 East 40th Street
Entire 23rd Floor
6,542 square feet

JK

10 East 40th Street
24th Floor

LOT LINE 7

LOT LINE 7



INITIAL
TENANT
LANDLORD
[Signature]