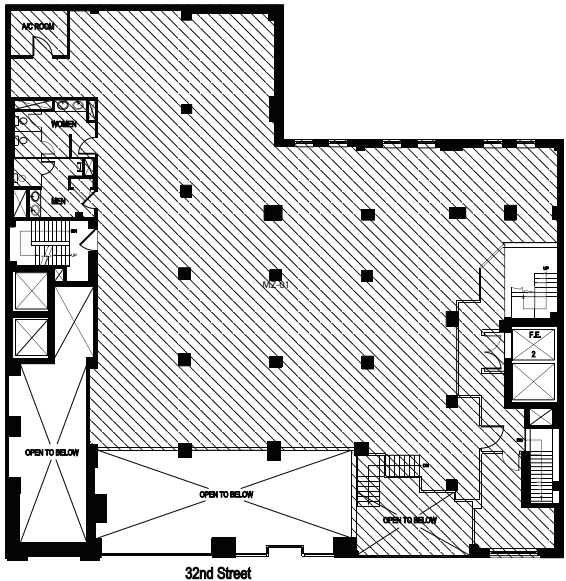
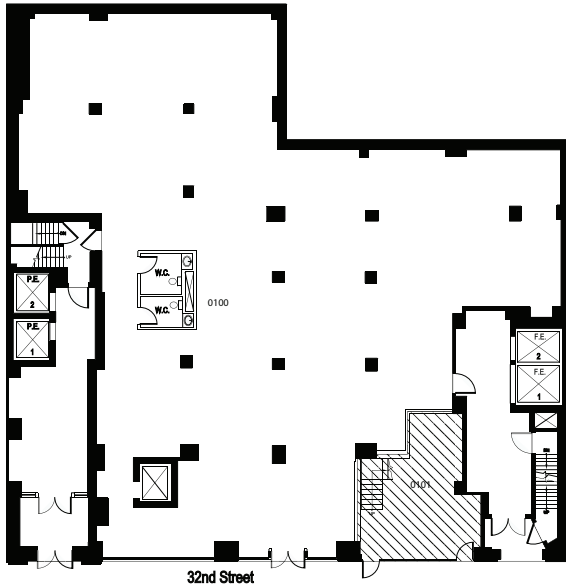


145 East 32nd Street

Between Lexington and 3rd Avenues

10,000 RSF with Private Entrance

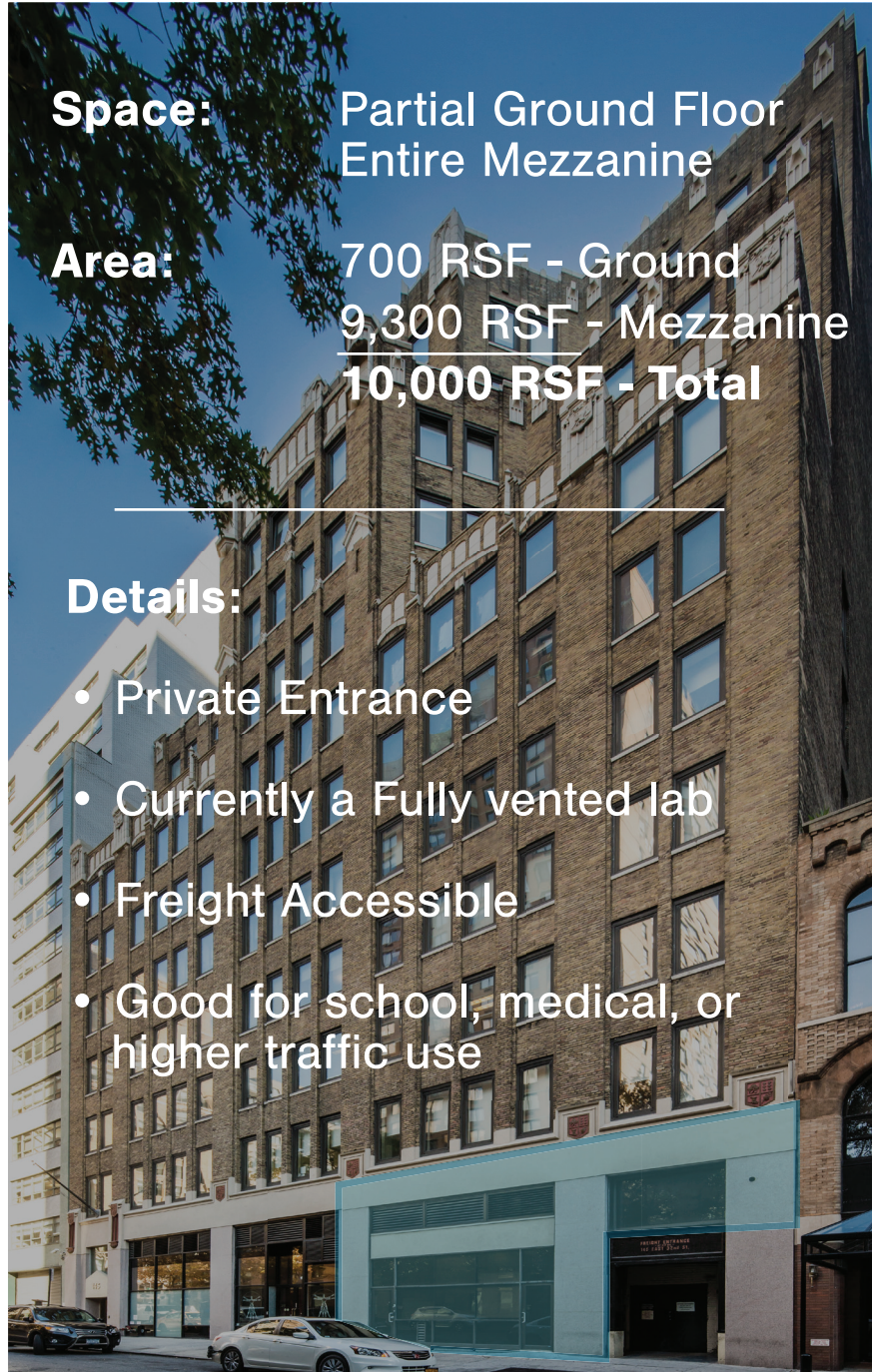


Space: Partial Ground Floor
Entire Mezzanine

Area: 700 RSF - Ground
9,300 RSF - Mezzanine
10,000 RSF - Total

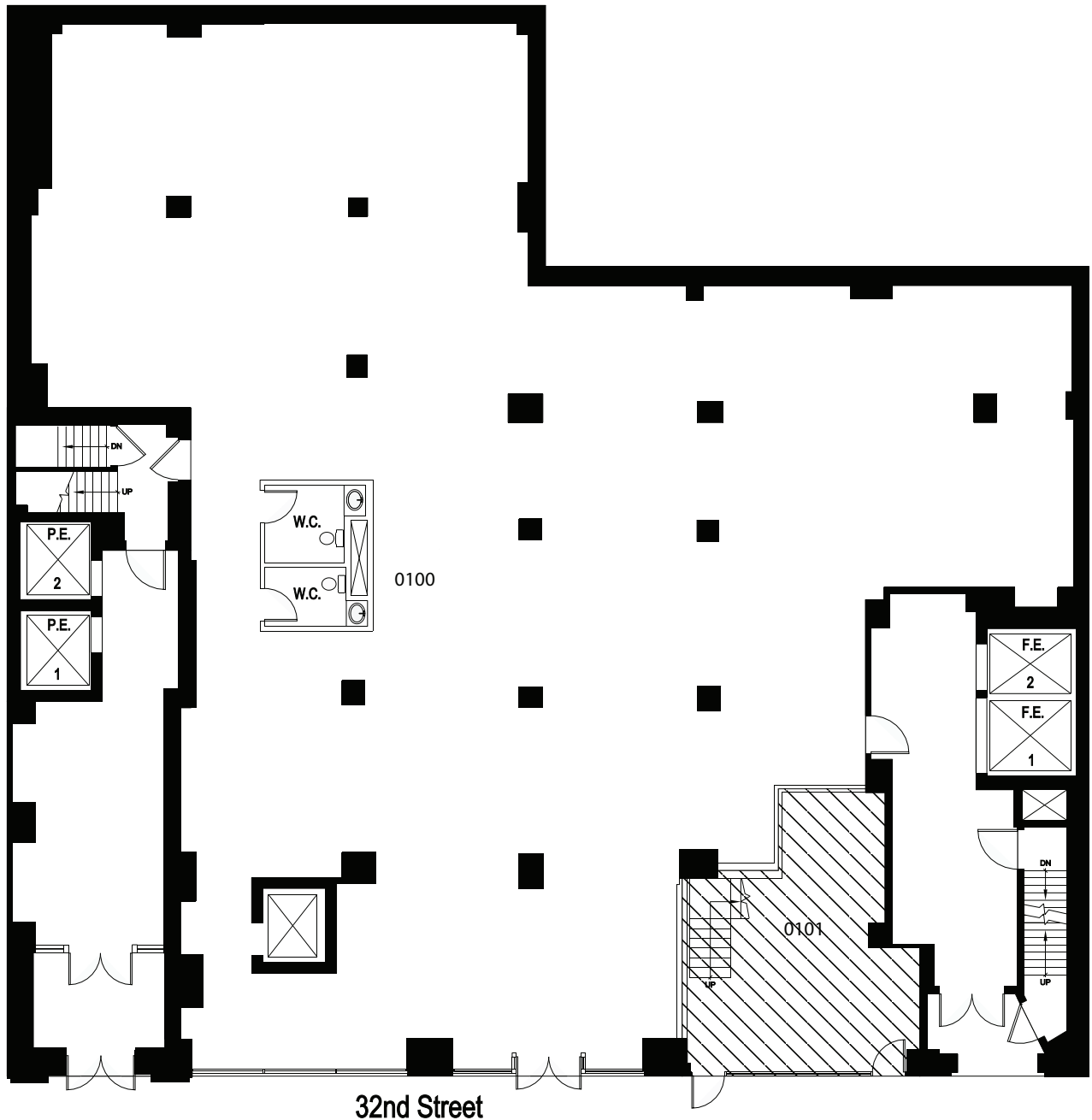
Details:

- Private Entrance
- Currently a Fully vented lab
- Freight Accessible
- Good for school, medical, or higher traffic use



145 East 32nd Street

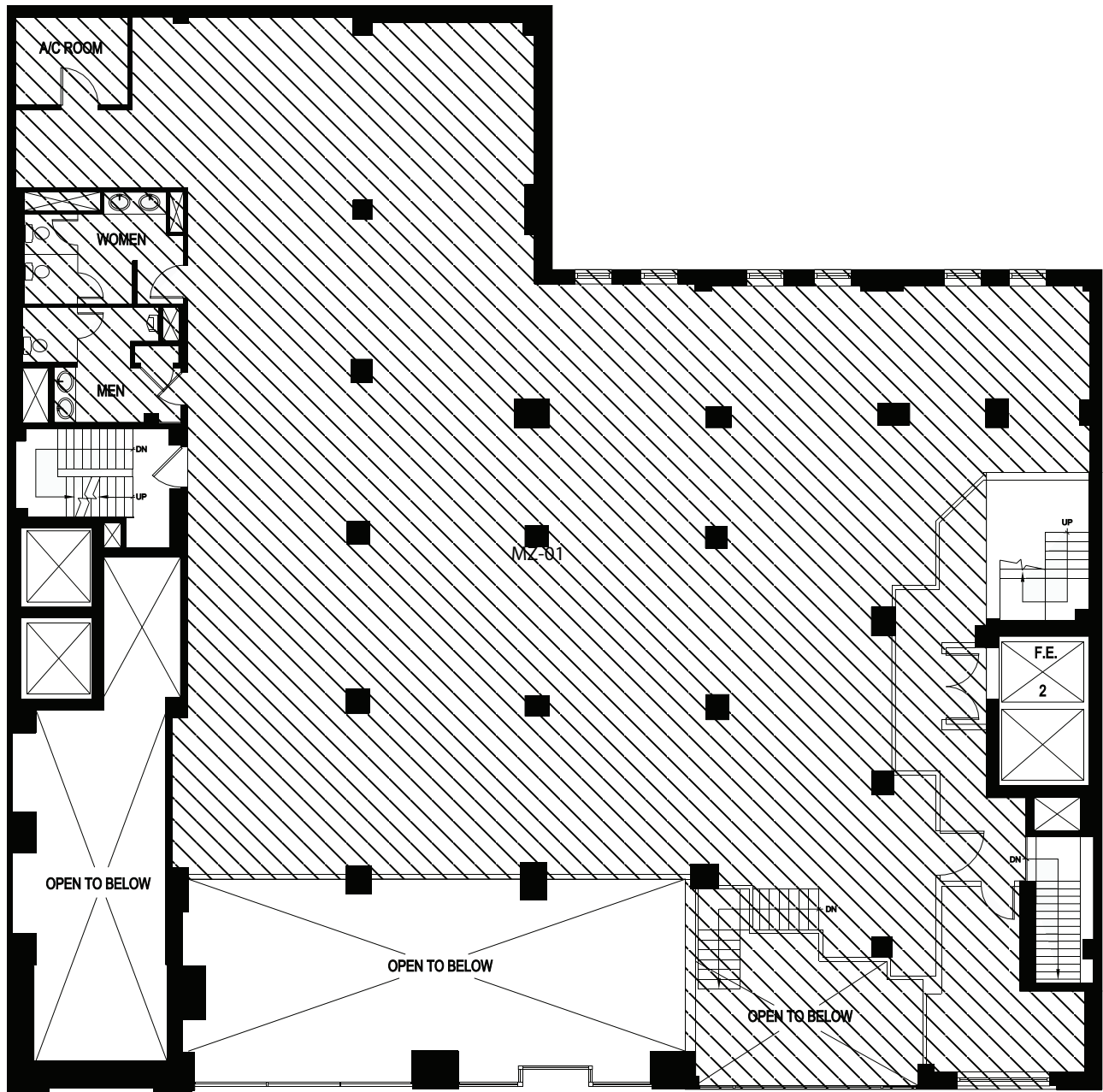
Between Lexington and 3rd Avenues



Partial Ground Floor

145 East 32nd Street

Between Lexington and 3rd Avenues



32nd Street

Entire Mezzanine