



AT HOME ON ANY SEA™



Krogen 48' AE Widebody – Silver Bay

Make:	Krogen	Boat Name:	Silver Bay
Model:	48' AE Widebody	Hull Material:	Fiberglass
Length:	48 ft	Draft:	5 ft
Price:	\$ 1,199,000	Number of Engines:	1
Year:	2012	Fuel Type:	Diesel
Condition:	Used		

Silver Bay

Do you like to entertain? Then Silver Bay is for you. Viking range, convection microwave, household refrigerator, wine cooler and dishwasher make for a complete kitchen from which to prepare and present delectable feasts. The U-shape settee in the salon has seated as many as eight for dinner. Like to be outside with your guests? Either the fully covered aft deck or flybridge are superb dual purpose locations. Built by knowledgeable boaters, Silver Bay is not to be missed!

Kadey-Krogen Yachts

610 NW Dixie Highway, Stuart, FL 34994, United States

Tel: 800-247-1230 Fax: 772-286-8487 yourcrew@kadeykrogen.com

<http://www.yachtworld.com/krogenyachtsales>

Measurements

LOA:	53 ft	Displacement:	56450 lb
Length on Deck:	48 ft 6 in	Displacement Type:	Half Load
Beam:	17 ft 4 in	Fuel Tanks Capacity:	1000 gal
Max Draft:	5 ft	Fuel Tanks Material:	Aluminum
		Fresh Water Tanks Capacity:	400 gal
		Fresh Water Tanks Material:	Stainless Steel
		Holding Tank Capacity:	100 gal
		Number of Cabins:	2
		Number of Heads:	2

Propulsion

Engine #1

Engine Make:	John Deere	Hours:	1033
Engine Model:	6068TFM	Power:	201 hp

CONSTRUCTION

Hull and superstructure molds from high-grade female tooling.

Hull construction includes use of USA-made, Cook® gel coat. Hand-Laid Knytex® fiberglass construction with closed-cell PVC sandwich core used in topsides. Solid fiberglass below waterline with blister-resistant vinylester resin utilized on first two laminates below the waterline, with aramid fiber/FRP reinforcements.

Superstructure includes end-grain balsa core and Knytex® surface mats for print-through reduction.

Teak aft and side decks. Boat and fore decks have GripTex® non-skid finish. Bulwark has molded plank lines with gel coat finish.

Polyurethane formulated marine sealants used at hull-to-deck, boat deck joints and exterior fittings.

Marine-grade plywood bulkheads with molded fiberglass hat section stringers

EXTERIOR GENERAL

Widebody version, including starboard weather door

Radar arch with custom mast (in lieu of traditional mast and boom)

Doors: Diamond Sea Glaze®, weather-tight, welded aluminum, double doors in saloon, (2) dutch-style in pilothouse

Windows: Diamond Sea Glaze®, with aluminum frames painted to match superstructure, (5) fixed, (4) sliding with screens

Master stateroom hatches: (2) Lewmar

Ports: Man Ship®, stainless steel with screens

Thru-hulls & seacocks: bronze

Hawse pipes and cleats: 316L stainless steel

Mooring cleats: 316L stainless steel. One additional cleat from standard compliment located mid-ship port side

Bow eye 316L stainless steel

Cockpit with teak decking

Transom door with stainless steel latch handle and hold back

Lazarette with access hatch and ladder

Emergency tiller

Side boarding gates: (2) with stainless steel latch handle and hold back

Fresh water bib (2) (forward and aft)

Transom shower: Scandvik® hot/cold fresh water

Shore power inlet (2) : Marinco 50 amp (forward and aft)

TV inlet (2): Marinco (forward and aft)

Overhead LED blue/white combination lighting

Bow railings: welded 316L stainless steel

Bowsprit and pulpit with (2) anchor rollers

Watertight anchor locker deck hatch: Freeman Marine®

Salt water anchor washdown: ShurFlo®

Glendinning cablemaster with 60' cord and remote control

Spare shore power cord in bow locker

Undermount swim ladder

Sunbrella canvas throughout: Bimini/boot, Bow seat, fly bridge settee, flybridge console cover, grill cover, dingy cover

Window covers: Full Textaline covers for pilot house and Sunbrella covers for foredeck hatches

FLY BRIDGE & BOAT DECKS

Summer kitchen with refrigerator and propane BBQ

Frigibar Ensign deck freezer

Davit: Steelhead Marine ES-1000 with four function hydraulics and wireless remote

12' AB inflatable VST with 40HP Yamaha

Modified boat deck railing to accommodate athwartships mounted dinghy

Anchor 88# Ultra with 300' of chain

Anchor 88# Delta with 300' of nylon rode

Anchor 88# Super Max (as spare)

Anchor bridle (Mantus)

Maxwell 24VDC anchor windlass

Boat deck railings: welded 316L stainless steel

Wheel: Edson, stainless steel, destroyer type

Helm chair: Pompanette®

Compass: Ritchie®

INTERIOR GENERAL

Teak & spruce flooring throughout

Custom cut and bound carpeting in salon and staterooms

Teak cabinetry, paneling and valances throughout

Ultrasuede fabric for saloon, pilothouse & second stateroom

Granite countertops in galley, saloon bookcase and heads

Stereo speaker wiring to include 2-saloon, 2-pilothouse & 2-flybridge locations

3-zone Cruisair reverse cycle air conditioning system

Hanging lockers with automatic interior light controls

Drawers with stainless steel slides

Invisible sliding screen on saloon door

SALOON & GALLEY

Settee: U-shaped starboard, with storage below

Eckornes chairs and ottoman to port

Table: Fold-out top with hi/low base

Aft bulkhead sliding window

42" TV lift port side

Large sliding 18" x 24" Galley window in lieu of smaller portlight

Galley Sink: Elkay®, stainless steel, single basin with Grohe faucet

Counter Tops: Granite

Below counter trash & recycling pull-out container

Galley Appliances, Stainless Steel Finish:

- Refrigerator (with icemaker) - GE®
- Microwave/Convection Oven- GE®
- Range/Oven – Viking 24” propane
- Dishwasher: GE with stainless steel front
- 24 bottle wine cooler

ELECTRONICS AND ENTERTAINMENT

Furuno MFD88 NavNet 3D Black Box Navigation Processor with weather

Furuno 6kW, 64 Mile, NavNet 3D Digital UHD Radar with 4 foot array

Furuno FA-50 Black-Box Class-B send & receive AIS

Furuno Digital Black Box Sounder Module

(2) Green Marine 15" Display Screens (pilothouse)

(2) ICOM M-604 VHF (pilothouse)

Furuno NavPilot 700 Hydraulic Autopilot System with (2) station controls

(2) Furuno FI-503 Multi-Function Displays

Engine room and stern view CCTV

Furuno NavNet 3D 8" MFD Color Navigation Display (flybridge)

ICOM remote mic (flybridge)

KVH TracPhone FBB-150 "BGAN" Broadband Satellite Data & Phone

Wi-Fi Amplifier & Router

BOSE 3.2.1 GS/DVD Home Entertainment System with iPod docking jack

KVH Trac Vision HD-7 Satellite TV System

Samsung 40" TV in Salon

Samsung 22" TV in Master

Fusion CD-600G Stereo

ENGINE ROOM & SYSTEMS

John Deere 6068TFM 201 hp (approx. 1033 hours)

Engine room ventilation system with moisture eliminators

ABT hydraulic package, including 15 hp bow thruster and digital stabilizers

Automatic fire suppression system: Sea-Fire

ESI fuel polishing system CFS1000FR, 12V DC

12 KW Northern Lights generator with sound shield (approx. 245 hours)

Reverso oil change system for main engine, gear & generator

Shaft: Aquamet® 22, 2" diameter

Shaft seal: Tides® dripless

Propeller: Hung Shen®, bronze, 4-bladed, 32" diameter, 21" pitch

Rudder: stainless steel with protective shoe

Bilge pumps: (4) Rule®, @ 2,000 gallons-per-hour with Ultra® high water alarm (2 stations)

Emergency bilge pump: tied into the raw water intake for the main engine

Muffler: Centek®, fiberglass

Steering: Teleflex, hydraulic (2-station)

Controls: Hynautic, hydraulic (2-station)

Fuel tanks: (3) aluminum with sight gauges

Fuel filters: Dual Racor® w/ vacuum gauge for main engine

Electrical panel: 110/220-volt AC and 12-volt DC with circuit breakers

Tinned wiring, throughout

Battery boxes: fiberglass

Inverter/battery charger: Magnum 2800 watt

Battery charger: Charles Industries® 40 amp

High output alternator with external regulator: Balmar® 270 amp

Isolation transformer: Charles Industries

Water piping: copper, insulated

Dockside water pressure regulator: (2) Jabsco®

Pressure water system: Headhunter

Water heater: Raritan®: 20-gallon capacity

Water tanks: (2) 316L stainless steel and coated, 400 gallon total capacity

Holding tank: fiberglass, 100-gallon capacity with macerator

Sound insulation: Pyrotek, Sorberflex with perforated aluminum

Lighting: Imtra®, LED

Stanchion isolators: Soundown

Sole boards with Awlgrip non-skid paint

Fresh water hose with nozzle

Batteries: Lifeline® AGM (1) 210-amp/hr engine starting, (1) 210-amp/hr generator starting, (4) 255-amp/hr ship service (NEW 11/2018)

PILOT HOUSE

LeBroc Helm seat

Overhead hatches with screens (2)

Compass: Ritchie®

Rudder angle indicator: VDO

Windshield wipers with washers: (3), Imtra®

ACCOMODATIONS

Master Cabin

Island queen berth with I Comfort mattress. Drawer storage below and pneumatic lift struts on bed platform

Hanging lockers with automatic lighting

Bureau with drawers

Mirror with wood trim

Reading lights: Imtra LED

Two overhead hatches with screens

Guest Stateroom/Den

Large settee that converts to comfortable queen berth

Lighted book shelves above settee

Desk area for easy organization

Overhead lighting: LED with Vimar switches

Hanging locker with automatic lighting

Reading lights: Imtra LED

Master Head (full)

Toilet: Dometic Master Flush® with status panel

Showers: molded fiberglass with tempered glass door

Overhead lighting: LED with Vimar switches

Mirror with wood trim and model Bonn LED fixtures

Guest Head (full)

Toilet: Dometic Master Flush® with status panel

Showers: molded fiberglass with tempered glass

Washer & Dryer: Asko, stacking, separate units

Overhead lighting: LED with Vimar switches

Mirror with wood trim and model Bonn LED fixtures

Disclaimer

The Company offers the details of this vessel in good faith but cannot guarantee or warrant the accuracy of this information nor warrant the condition of the vessel. A buyer should instruct his agents, or his surveyors, to investigate such details as the buyer desires validated. This vessel is offered subject to prior sale, price change, or withdrawal without notice.

Photos



Foredeck Looking Aft



Exterior of Pilothouse



Custom Name Board



Clean and Functional Foredeck



Flybridge with Settee, Helm, Grill and Refrigerator



Refrigerator on Flybridge



Flybridge Helm



Fully Covered Aft Deck



Tender, Crane, Freezer and Seating on Boat Deck



Salon Looking Forward



Large U-Shape Settee to Starboard



Bar and Buffet Area to Port



Galley with Household Appliances



Helm Area



Chart Table



Settee/Pilot Berth Behind Helm



Queen Master Berth with Drawers Under



Master Closets and Bureau



Master Head



Den/Office/Guest Cabin



Desk and Storage in Guest



Guest Head



Washer AND Dryer!



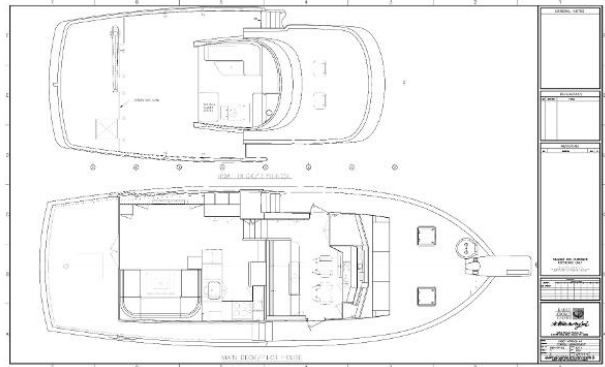
Port Side of Engine Room



Center of Engine Room



Starboard Side of Engine Room



Main Deck and Bridge Arrangement