

RBA-250, 320, 400, 500R

HEAVY DUTY • DUAL DISC HYDRAULIC CLAMPING

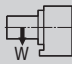




The RBA-Series rotary tables are equipped with the finest Tsudakoma technologies. RBA tables utilize a powerful dual disc hydraulic clamping mechanism, and are available with a built-in air/hydraulic booster. RBA-Series worm wheels are manufactured as an assembly consisting of the worm wheel, cross roller bearing, and the main spindle, resulting in unsurpassed accuracy.



RBA-400R

Specifications ►

Dimensions = mm

Table Model		RBA-250	RBA-250,S	RBA-320	RBA-320,S	RBA-400	RBA-500	
Versions available		R, L	R, L	R, L	R, L	R, L	R, L	
Table diameter	mm	250	250	320	320	400	500	
Center height	mm	160	160	210	210	255	310	
Center bore	Nose Diameter	mm	95H7	95H7	130H7	130H7	190H7	220H7
	Thru Diameter	mm	71	71	101	101	151	182
Table T-slot width		12H7	12H7	14H7	14H7	14H7	18H7	
Guide block width		18h7						
Servo motor (Fanuc)*		Alpha 8i	Alpha 8is	Alpha 12i	Alpha 22is	Alpha 12i	Alpha 12i	
Maximum motor speed	rpm	3,000	4,000	3,000	4,000	3,000	3,000	
Speed reduction ratio		1/90	1/45	1/90	1/45	1/90	1/180	
Maximum table speed	rpm	33.3	88.9	33.3	88.9	33.3	16.7	
Inertia converted into motor shaft	x 10 ⁻³ kg·m ²	.94	1.0	3.04	3.47	4.28	3.00	
Clamp system**		Hydraulic						
Clamp torque @500psi	Nm (ft. lbs.)	1,000 (737)	1,000 (737)	2,450 (1,806)	2,450 (1,806)	4,200 (3,095)	6,100 (4,496)	
Indexing accuracy	arc sec.	±7						
Repeatability	arc sec.	±2						
Net Weight	kg (lbs.)	100 (220)	100 (220)	180 (396)	180 (396)	300 (660)	550 (1,210)	
Allowable wheel torque	Nm (ft. lbs.)	581 (428)	581 (428)	939 (692)	939 (692)	1,666 (1,228)	3,276 (2,414)	
Allowable work inertia	kg·m ²	2.34	2.34	5.12	5.12	9.7	18.2	
Allowable work weight	 kg (lbs) [w/ tailstock]	150 (330) [300 (660)]	150 (330) [300 (660)]	200 (440) [400 (880)]	200 (440) [400 (880)]	250 (550) [500 (1,100)]	250 (550) [600 (1,320)]	
	 kg (lbs)	300 (660)	300 (660)	400 (880)	400 (880)	500 (1,100)	600 (1,320)	
Allowable load when table clamped	 N (lbf)	19,600 (4,390)	19,600 (4,390)	29,400 (6,586)	29,400 (6,586)	39,200 (8,781)	49,000 (10,976)	
	 Nm (ft. lbs.)	1,000 (737)	1,000 (737)	2,450 (1,806)	2,450 (1,806)	4,200 (3,095)	6,100 (4,496)	
	 Nm (ft. lbs.)	980 (722)	980 (722)	3,626 (2,672)	3,626 (2,672)	5,880 (4,334)	13,132 (9,678)	

* Other motors & RPM available

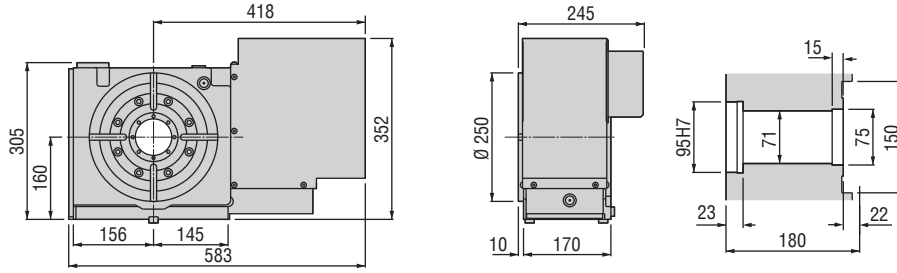
** Booster optional

Specifications subject to change without notice

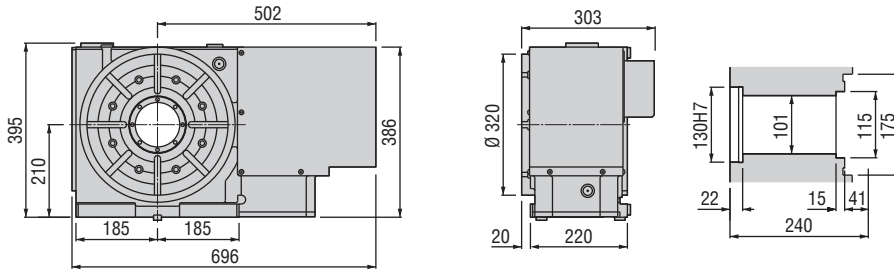
Dimensions ►

Drawings not to scale • Dimensions = mm

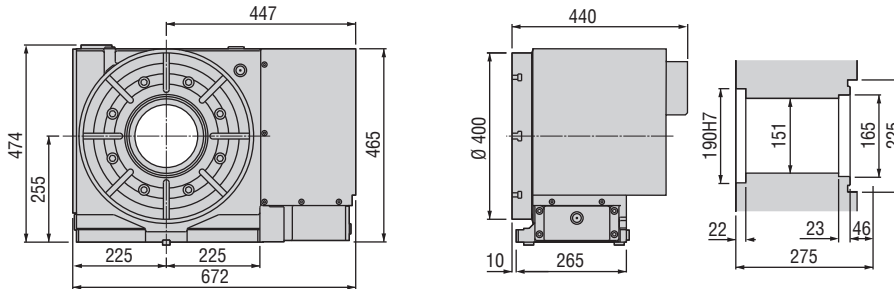
RBA-250R



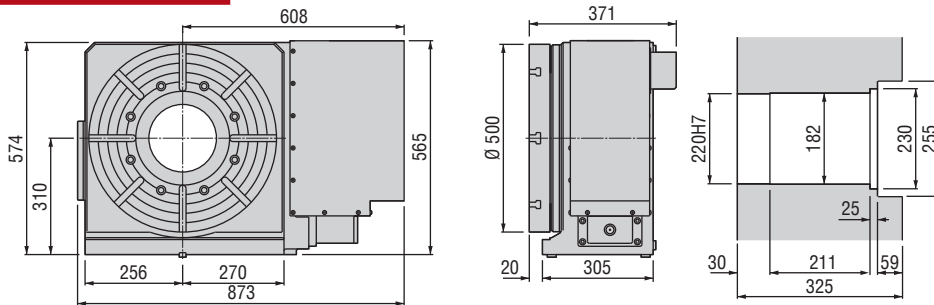
RBA-320R



RBA-400R

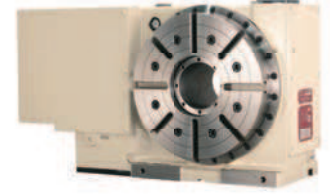


RBA-500R



The dimensions above are for tables with a FANUC servo motor. Other motors available (dimensions may increase).

• RBA-320L



• RBA-320R • TSH-210

Support Spindle

The rotary table and hydraulic support spindle are mounted on a custom baseplate and joined to a specially designed trunnion fixture.



• RBA-400R • TSH-210

Support Spindle

The rotary table and hydraulic support spindle are mounted on a custom baseplate and joined to a specially designed trunnion fixture. The support spindle is raised to match the RBA-400 255mm center height.



Options & Accessories

TPC NC Controller	p.66
Chucks	p.77
Tailstock	p.79
Support Spindle	p.79
Encoder / Scale	p.82
Pull Stud Device	p.83
Rotary Joint	p.83
Air/Hydraulic Booster	p.84
PVC or Steel Cables	p.84

Clamping Block and Bolt ►

Dimensions = mm

	Type	Q'ty	T-Slot Width	A	B	C	D	E	F	G	H	I	J	K	L	M
RBA-250	I	4	18	25	12	80	12	33	35	22	21	11	65	40	28	16
RBA-320	I	4	18	30	15	90	16	31	43	25	21	11	70	46	28	16
RBA-400	I	4	18	30	15	90	16	31	43	25	21	11	70	46	28	16
RBA-500	I	4	18	40	20	110	18	42	50	25	21	11	70	46	28	16

Note: When using a machine with a T-slot pitch other than the above, use suitable clamping blocks and bolts that are available on the market, or order custom-made ones from KOMA (opt.)

Type I

