

**RN-100/150-2,3,4 • RN-200/250/300-2,3**

MULTI-FACE PLATE, MULTI-SPINDLE TABLE • PNEUMATIC CLAMPING

These high speed, multi-spindle rotary tables are particularly suited for multi-spindle vertical machining centers. The compact, multi-spindle RN-100 is ideal for use on drilling and tapping machines.



RN-100R-3

**Specifications ►**

Dimensions = mm

Table Model		RN-100-2,3,4	RN-150-2,3,4			RN-200-2,3		RN-250-2,3		RN-300-2,3							
Versions available		R, L		R			R		R		R						
Spindle outer diameter	mm	80h7		100h7			120h7		-		-						
Table diameter (optional)	mm	(115)		(160)			(200)		250		320						
Center height	mm	135		135			160		160		210						
Center bore	Nose Diameter	mm		50H7			55H7		65H7		75H7		110H7				
	Thru Diameter	mm		30			40		45		45		85				
Table T-slot width (with face plate)		(10H8)		(12H8)			(12H8)		12H8		14H8						
Minimum spindle center distance		120		215			250		300		380						
Guide block width		18h7		14h7			18h7		18h7		18h7						
Servo motor (Fanuc)*		Alpha 4i		α2i		Alpha 3,4i		Alpha 8i		Alpha 8i		Alpha 12i					
Maximum motor speed	rpm	4,000		4,000		3,000		3,000		3,000		3,000					
Speed reduction ratio		1/36		1/90		1/180		1/90		1/120		1/180					
Number of spindles		2	3	4	2	3	4	2	3	2	3	2	3				
Maximum table speed	rpm	111.1		44.4		33.3		16.7		33.3		25		16.7		25	
Inertia converted into motor shaft	x 10 <sup>-3</sup> kg·m <sup>2</sup>	.64	.92	1.06	.42	.78	.39	.55	.92	.84	.63	2.09	2.63				
Clamp system		Pneumatic															
Clamp torque @72psi	Nm (ft. lbs.)	80 (59)		156 (115)			294 (217)		441 (325)		880 (649)						
Indexing accuracy	arc sec.	±30		±15													
Repeatability	arc sec.	±2															
Net Weight [dual spindle]	kg (lbs.)	70-110 (154-242)		[120 (264)]			[160 (352)]		[240 (528)]		[480 (1,056)]						
Allowable wheel torque	Nm (ft. lbs.)	178 (131)		147 (108)			245 (181)		470 (346)		764 (563)						
Allowable work inertia	kg·m <sup>2</sup>	.10		.48			1.2		2.0		3.7						
Allowable work weight	kg (lbs) [w/ tailstock]	25 (55) [50 (110)]		75 (165) [150 (330)]			100 (220) [250 (550)]		100 (220) [250 (550)]		150 (330) [350 (770)]						
	kg (lbs)	50 (110)		150 (330)			250 (550)		250 (550)		350 (770)						
Allowable load when table clamped	N (lbf)	5,880 (1,317)		7,840 (1,756)			13,720 (3,073)		13,720 (3,073)		19,600 (4,390)						
	N (ft. lbs.)	80 (59)		156 (115)			294 (217)		441 (325)		880 (649)						
	N (ft. lbs.)	156 (115)		392 (289)			980 (722)		980 (722)		1,960 (1,444)						

\* Other motors & RPM available

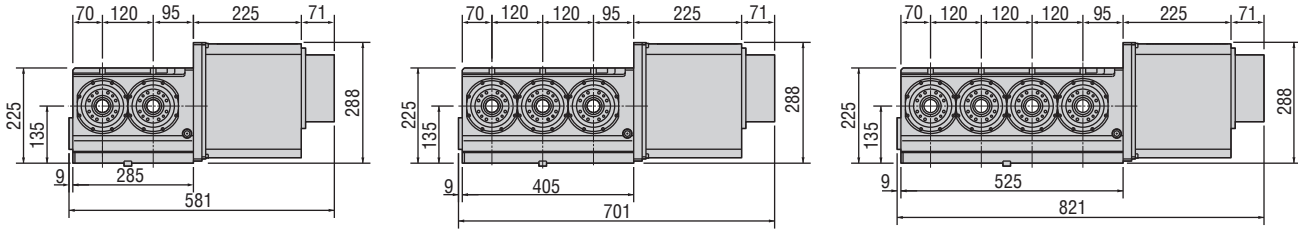
Specifications subject to change without notice

# NC Rotary Tables ▶ Multi-Face Plate, Multi-Spindle Models

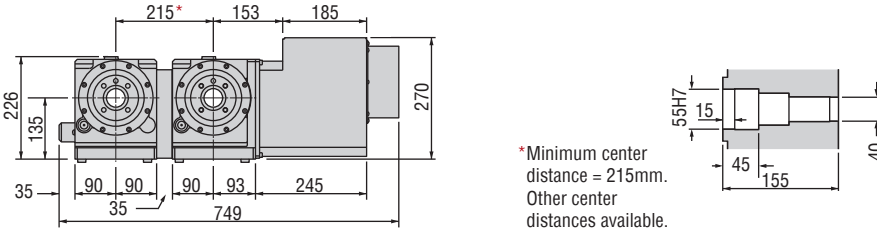
## Dimensions ▶

Drawings not to scale • Dimensions = mm

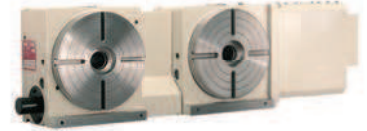
### RN-100R-2,3,4



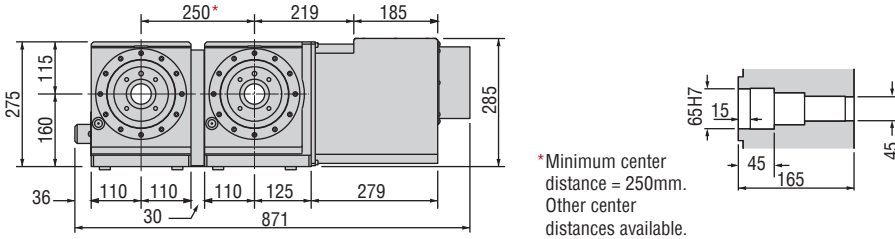
### RN-150R-2 (3 & 4 spindle models also available)



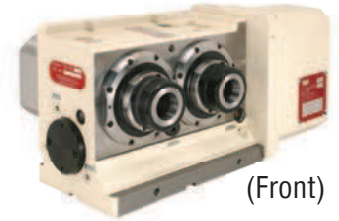
### • RN-250-2



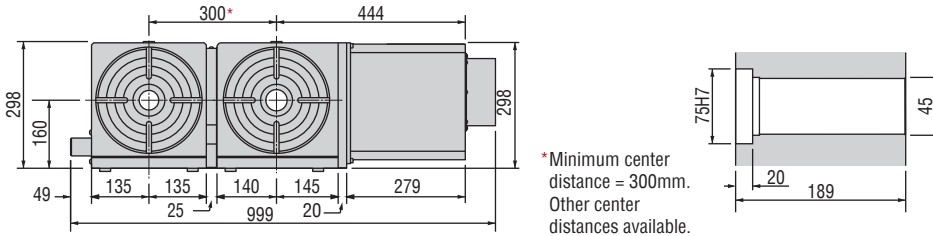
### RN-200R-2 (3 spindle model also available)



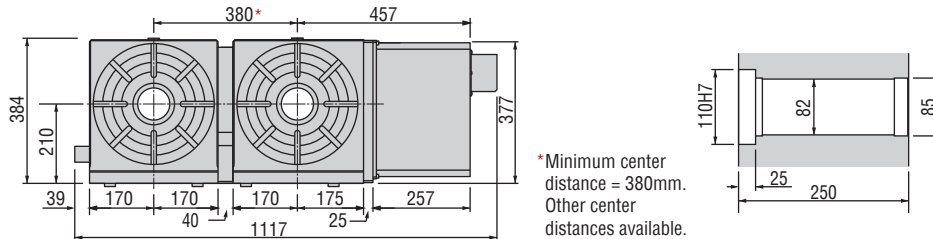
### • RN-100-2 w/5C Collets



### RN-250R-2 (3 spindle model also available)



### RN-300R-2 (3 spindle model also available)



### Options & Accessories

TPC NC Controller	p.66
Chucks	p.77
Tailstock	p.79
Support Spindle	p.79
Face Plate	p.81
Encoder / Scale	p.82
Pull Stud Device	p.83
Rotary Joint	p.83
PVC or Steel Cables	p.84

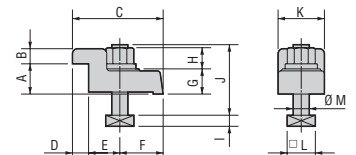
The dimensions above are for tables with a FANUC servo motor. Other motors available (dimensions may increase).

## Clamping Block and Bolt ▶

Dimensions = mm

	Type	Q'ty	T-Slot Width	A	B	C	D	E	F	G	H	I	J	K	L	M
RN-100R	I	2	18	25	12	80	12	33	35	22	21	11	65	40	28	16
RN-150R	I	2	18	25	12	80	12	33	35	22	21	11	65	40	28	16
RN-200R	I	2	18	25	12	80	12	33	35	22	21	11	65	40	28	16
RN-250R	I	4	18	25	12	80	12	33	35	22	21	11	65	40	28	16
RN-300R	I	4	18	30	15	90	16	31	43	25	21	11	70	46	28	16

### Type I



Note: When using a machine with a T-slot pitch other than the above, use suitable clamping blocks and bolts that are available on the market, or order custom-made ones from KOMA (opt.)