

**RNA-161, 201, 251, 321R,B • RNCV-401R,B**

SUITABLE WHEN Y AXIS INTERFERENCE IS AN ISSUE

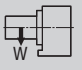

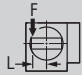
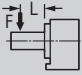
The RNA,B-Series tables position the servomotor at the rear of the table casting resulting in a compact footprint. The “B” series tables are suitable when “Y” axis interference is an issue. RNA,B-Series tables utilize a patent pending dual taper pneumatic clamping system which generates massive clamp torque. The RNCV-401R,B features powerful hydraulic clamping.



RNA-251R,B

**Specifications ▶**

Dimensions = mm

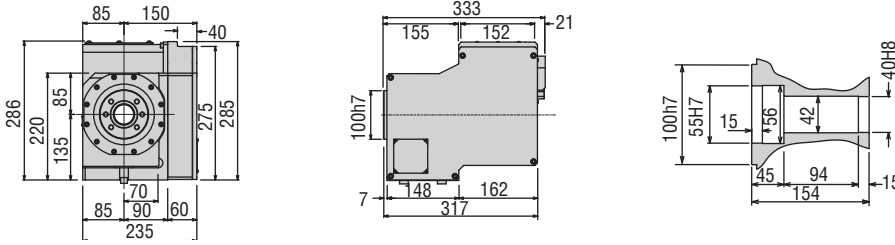
Table Model		RNA-161R,B	RNA-201R,B	RNA-251R,B	RNA-321R,B	RNCV-401R,B	
Spindle outer diameter		mm	100h7	120h7	140h7	180h7	-
Table diameter (optional)		mm	(160, 200)	(200, 250)	250	320	400
Center height		mm	135	160	160	210	255
Center bore	Nose Diameter	mm	55H7	65H7	80H7	110H7	40H7
	Thru Diameter	mm	40	45	50	85	40
Table T-slot width (with face plate)			(12H8)	(12H8)	12H8	14H7	14H7
Guide block width			14h7	18h7			
Servo motor (Fanuc)*			Alpha 2i	Alpha 4i	Alpha 8i	Alpha 8i	Alpha 21i
Maximum motor speed		rpm	5,000	4,000	3,000	3,000	3,000
Speed reduction ratio			1/72	1/72	1/90	1/120	1/180
Maximum table speed		rpm	69.4	55.6	33.3	25	16.7
Inertia converted into motor shaft		x 10 <sup>-3</sup> kg·m <sup>2</sup>	.56	.64	.97	.84	4.01
Clamp system			Pneumatic Dual Taper				
Clamp torque @72psi [500psi]		Nm (ft. lbs.)	500 (369)	800 (590)	1,000 (737)	1,500 (1,106)	1,746 (1,287)
Indexing accuracy		arc sec.	±12.5	±10	±10	±10	±7.5
Repeatability		arc sec.	±2				
Net Weight		kg (lbs.)	53 (117)	77 (169)	95 (209)	165 (363)	330 (726)
Allowable wheel torque		Nm (ft. lbs.)	206 (152)	288 (212)	596 (439)	939 (692)	1,667 (1,228)
Allowable work inertia		kg·m <sup>2</sup>	.64	1.25	1.95	4.48	9.7
Allowable load when table clamped		kg (lbs) [w/ tailstock]	100 (220) [175 (385)]	125 (275) [250 (550)]	125 (275) [250 (550)]	175 (385) [375 (825)]	200 (440) [500 (1,100)]
		N (lbf)	10,800 (2,419)	14,400 (3,226)	14,400 (3,226)	24,800 (5,555)	39,200 (8,781)
		Nm (ft. lbs.)	500 (369)	800 (590)	1,000 (737)	1,500 (1,106)	1,764 (1,300)
		Nm (ft. lbs.)	780 (575)	1,900 (1,400)	1,900 (1,400)	4,700 (3,464)	2,450 (1,806)

\* Other motors & RPM available  
Specifications subject to change without notice

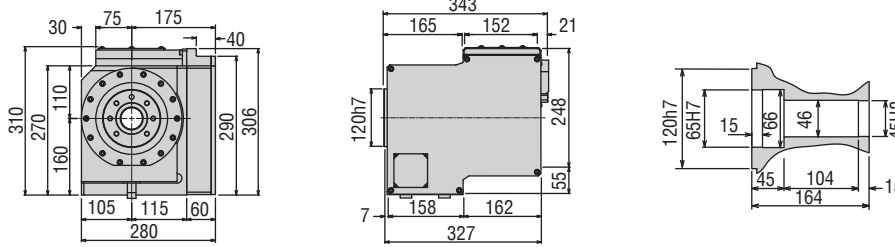
Dimensions ▶

Drawings not to scale • Dimensions = mm

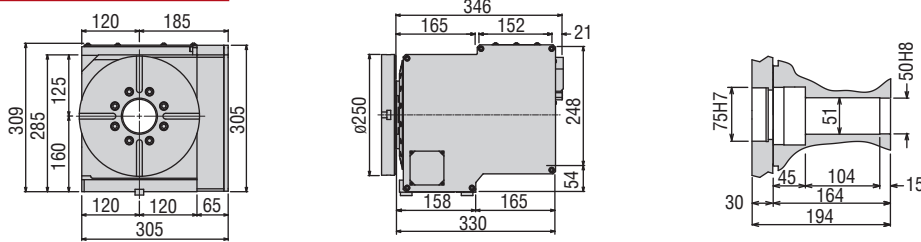
**RNA-161R,B**



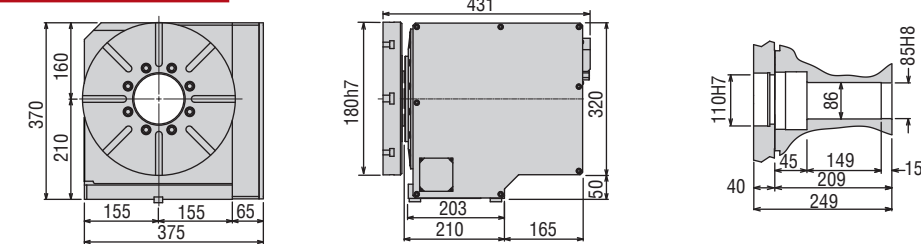
**RNA-201R,B**



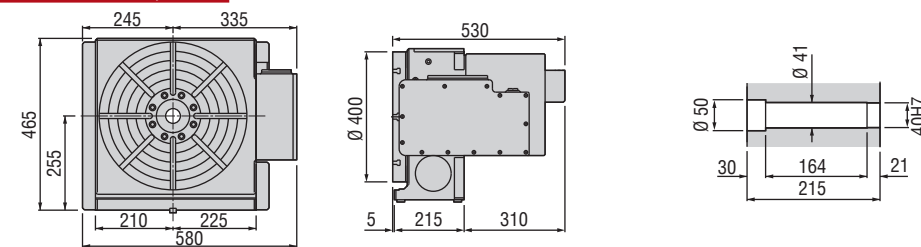
**RNA-251R,B**



**RNA-321R,B**



**RNCV-401R,B**

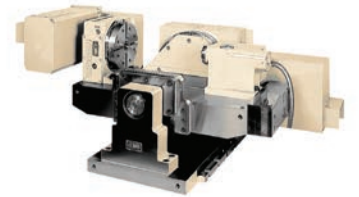


• RNCV-401R,B



• RT-22

This custom machining system combines (2) RNCV-401 rotary tables with (2) hydraulic tailstocks.



Options & Accessories

TPC NC Controller	p.66
Chucks	p.77
Tailstock	p.79
Support Spindle	p.79
Face Plate	p.81
PVC or Steel Cables	p.84

The dimensions above are for tables with a FANUC servo motor. Other motors available (dimensions may increase).

Clamping Block and Bolt ▶

Dimensions = mm

	Type	Q'ty	T-Slot Width	A	B	C	D	E	F	G	H	I	J	K	L	M
RNA-161R,B	-	2	14	-	-	-	-	-	-	-	17	8	60	-	23	12
RNA-201R,B	-	2	18	-	-	-	-	-	-	-	21	11	65	-	28	16
RNA-251R,B	I	4	18	25	12	80	12	33	35	22	21	11	65	40	28	16
RNA-321R,B	I	4	18	30	15	90	16	31	43	25	21	11	70	46	28	16
RNCV-401R,B	I	4	18	30	15	90	16	31	43	25	21	11	70	46	28	16

Note 1: When using a machine with a T-slot pitch other than the above, use suitable clamping blocks and bolts that are available on the market, or order custom-made ones from KOMA (opt.)

Note 2: Clamping blocks are not included in RNA-161R,B and RNA-201R,B.

Type I

