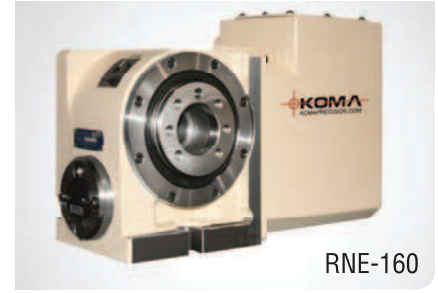


RNE-160, 200, 250, 320

COMPACT • MASSIVE CLAMP TORQUE

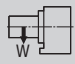


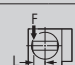
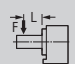
The RNE Series tables' offer speeds ranging from 25 to 44.4 RPM and indexing accuracies ranging from 10 to 12.5 arc seconds. These compact, high-speed, high-quality RNE Series tables offer economy line pricing while retaining high clamp torque and increased production performance.



RNE-160

Specifications ►

Dimensions = mm

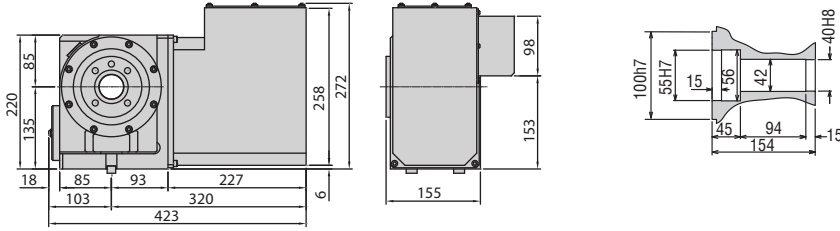
Table Model		RNE-160	RNE-200	RNE-250	RNE-320	
Versions available		R, L	R, L	R, L	R, L	
Spindle outer diameter	mm	100h7	120h7	140h7	180h7	
Table diameter (optional)	mm	(160, 200)	(200, 250)	250	320	
Center height	mm	135	160	160	210	
Center bore	Nose Diameter	mm	55H7	65H7	75H7	110H7
	Thru Diameter	mm	40	45	45	82
Table T-slot width (with faceplate)		(12H8)	(12H8)	12H8	14H8	
Guide block width		14h7	18h7	18h7	18h7	
Servo motor*		Alpha 4i	Alpha 4i	Alpha 8i	Alpha 12i	
Maximum motor speed	rpm	4,000	4,000	3,000	3,000	
Speed reduction ratio		1/90	1/90	1/120	1/120	
Maximum table speed	rpm	44.4	44.4	25	25	
Inertia converted into motor shaft	x 10 ⁻³ kg·m ²	.09	.17	.41	.52	
Clamp system		Pneumatic Disc Clamp				
Clamp torque @72psi	Nm (ft. lbs.)	250 (180)	400 (295)	600 (442)	1,000 (737)	
Indexing accuracy	arc sec.	±12.5	±10	±10	±10	
Repeatability	arc sec.	±2	±2	±3.5	±3.5	
Net Weight	kg (lbs.)	44 (97)	62 (136)	107 (235)	205 (451)	
Allowable wheel torque	Nm (ft. lbs.)	206 (152)	288 (212)	565 (416)	939 (692)	
Allowable work inertia	kg·m ²	.48	1.25	1.95	3.77	
Allowable work weight [with tailstock]	 kg (lbs)	75 (165) [150 (330)]	100 (220) [250 (550)]	100 (220) [250 (550)]	150 (330) [350 (770)]	
	 kg (lbs)	150/330	250/550	250/550	350/770	
Allowable load when table clamped	 Nm (ft. lbs.)	7,840 (1,762)	13,720 (3,085)	250 (550)	350 (770)	
	 Nm (ft. lbs.)	250 (180)	400 (295)	13,720 (3,073)	19,600 (5,555)	
	 Nm (ft. lbs.)	392 (290)	980 (723)	600 (442)	1,000 (737)	

* Other motors & RPM available
Specifications subject to change without notice

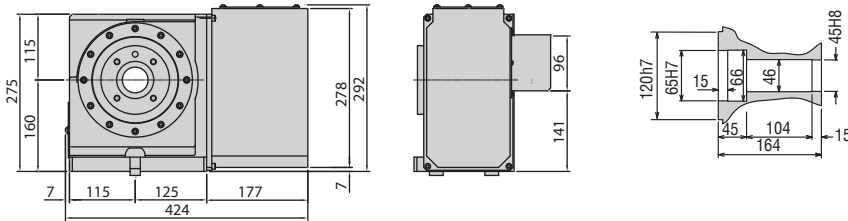
Dimensions ►

Drawings not to scale • Dimensions = mm

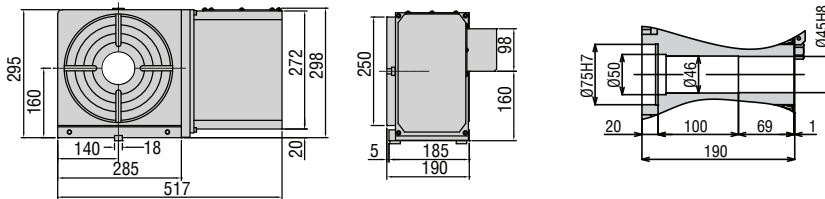
RNE-160



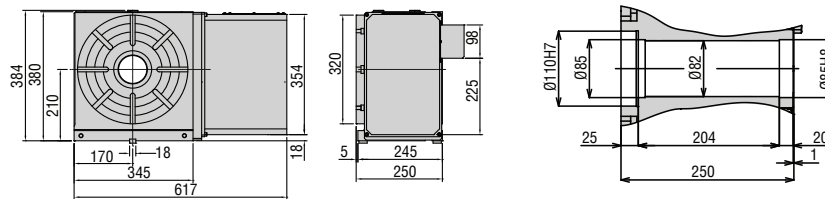
RNE-200



RNE-250



RNE-320



Options & Accessories

TPC NC Controller	p.66
Chucks	p.77
Tailstock	p.79
Support Spindle	p.79
Face Plate	p.81
Encoder / Scale	p.82
Pull Stud Device	p.83
Rotary Joint	p.83
PVC or Steel Cables	p.84

The dimensions above are for tables with a FANUC servo motor. Other motors available (dimensions may increase).

Clamping Block and Bolt ►

Dimensions = mm

	Type	Q'ty	T-Slot Width	A	B	C	D	E	F	G	H	I	J	K	L	M
RNE-160	-	2	14	-	-	-	-	-	-	-	17	8	60	-	23	12
RNE-200	-	2	18	-	-	-	-	-	-	-	21	11	65	-	28	16
RNE-250	I	4	18	25	12	80	12	33	35	22	21	11	65	40	28	16
RNE-320	I	4	18	30	15	90	16	31	43	25	21	11	70	46	28	16

Note 1: When using a machine with a T-slot pitch other than the above, use suitable clamping blocks and bolts that are available on the market, or order custom-made ones from KOMA (opt.)

Note 2: Clamping blocks are not included in RNE-160 and RNE-200.

Type I

