

**RTV-304,CA / 404,CA / 504,CA / 604,CA / 801,CA**

EXTRA LARGE CENTER BORE • DUAL DISC HYDRAULIC CLAMPING

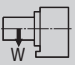
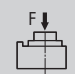
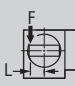
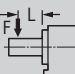
The RTV,CA-Series rotary tables feature an extra large center bore with a top mounted servomotor. RTV,CA-Series tables utilize a powerful dual disc hydraulic clamping mechanism. RTV,CA-Series rotary tables are particularly suited for use on horizontal machining centers.



RTV-404,CA

**Specifications ►**

Dimensions = mm

Table Model		RTV-304,CA	RTV-404,CA	RTV-504,CA	RTV-604,CA	RTV-801,CA
Table diameter	mm	350	450	550	650	800
Center height	mm	235	280	350	400	530
Center bore	Nose Diameter	mm	<b>190H7</b>	<b>250H7</b>	<b>315H7</b>	<b>385H7</b>
	Thru Diameter	mm	<b>160</b>	<b>209</b>	<b>270</b>	<b>340</b>
Table T-slot width		14H7	14H7	18H7	18H7	18H7
Guide block width		18h7				22h7
Servo motor (Fanuc)*		Alpha 12i				
Maximum motor speed	rpm	3,000				
Speed reduction ratio		1/90	1/90	1/120	1/180	1/360
Maximum table speed	rpm	33.3	33.3	25	16.6	8.3
Inertia converted into motor shaft	$\times 10^{-3}\text{kg}\cdot\text{m}^2$	2.70	4.05	6.01	5.48	4.35
Clamp system**		Hydraulic				
Clamp torque @500psi	Nm (ft. lbs.)	2,700 (1,990)	4,600 (3,390)	5,800 (4,275)	10,000 (7,370)	14,500 (10,687)
Indexing accuracy	arc sec.	$\pm 7.5$				
Repeatability	arc sec.	$\pm 2$				
Net Weight	kg (lbs.)	180 (396)	430 (946)	590 (1,298)	910 (2,000)	1,370 (3,014)
Allowable wheel torque	Nm (ft. lbs.)	1,370 (1,010)	2,630 (1,938)	4,200 (3,095)	5,500 (4,053)	7,840 (5,778)
Allowable work inertia	$\text{kg}\cdot\text{m}^2$	10.0	20.0	30.0	58.0	120.0
Allowable work weight	 <b>kg (lbs)</b> [w/ tailstock]	300 (660) [500 (1,100)]	350 (770) [700 (1,540)]	500 (1,100) [1,000 (2,200)]	550 (1,210) [1,100 (2,420)]	600 (1,320) [1,500 (3,300)]
	 <b>N (lbf)</b>	29,400 (6,586)	45,000 (10,080)	54,000 (12,096)	54,000 (12,096)	64,400 (14,426)
Allowable load when table clamped	 <b>Nm (ft. lbs.)</b>	2,700 (1,990)	4,600 (3,390)	5,800 (4,275)	10,000 (7,370)	14,500 (10,687)
	 <b>Nm (ft. lbs.)</b>	3,626 (2,672)	8,000 (5,896)	15,132 (11,152)	15,132 (11,152)	27,000 (19,899)

\* Other motors & RPM available

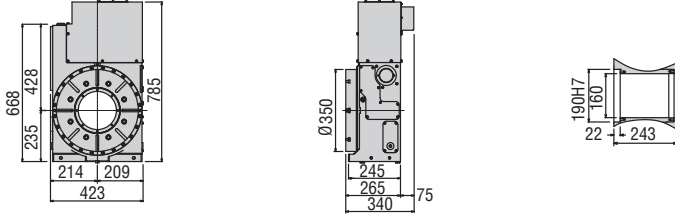
\*\* Booster optional

Specifications subject to change without notice

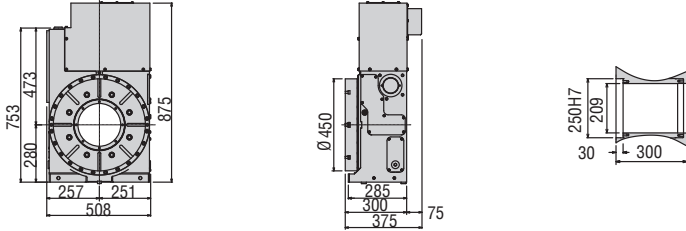
## Dimensions ▶

Drawings not to scale • Dimensions = mm

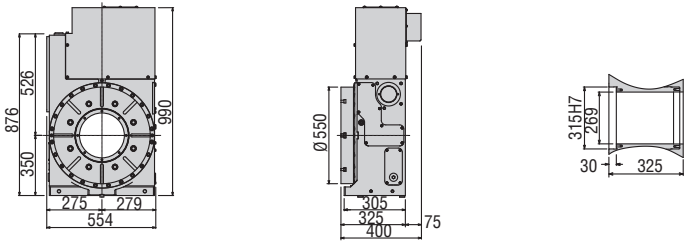
### RTV-304, CA



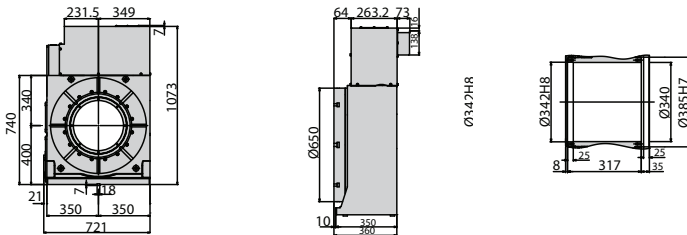
### RTV-404, CA



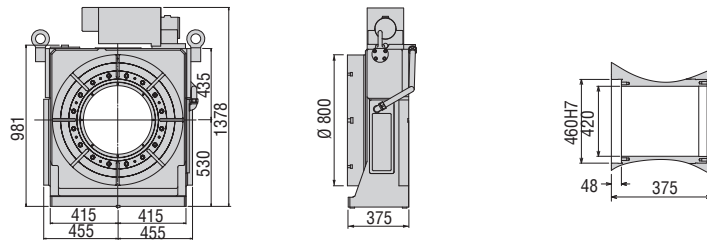
### RTV-504, CA



### RTV-604, CA



### RTV-801, CA



The dimensions above are for tables with a FANUC servo motor. Other motors available (dimensions may increase).

## Clamping Block and Bolt ▶

Dimensions = mm

	Type	Q'ty	T-Slot Width	A	B	C	D	E	F	G	H	I	J	K	L	M
RTV-304, CA	I	4	18	30	15	90	16	31	43	25	21	11	70	46	28	16
RTV-404, CA	I	4	18	40	20	109	18	42	50	25	21	11	70	46	28	16
RTV-504, CA	I	4	18	40	20	109	18	42	50	25	21	11	70	46	28	16
RTV-604, CA	II	4	18	40	20	63	18	15	30	58	21	11	105	60	28	16
RTV-801, CA	II	4	22	60	28	98	29	16	50	88	27	13	145	100	32	20

Note: When using a machine with a T-slot pitch other than the above, use suitable clamping blocks and bolts that are available on the market, or order custom-made ones from KOMA (opt.)

- RTV-404, CA  
Optional Swivel Box



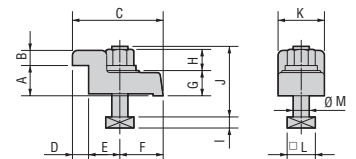
- RTV Big Bore Chucks  
Contact KOMA for custom big bore chuck information



### Options & Accessories

TPC NC Controller	p.66
Chucks	p.77
Tailstock	p.79
Support Spindle	p.79
Encoder / Scale	p.82
Pull Stud Device	p.83
Rotary Joint	p.83
Air/Hydraulic Booster	p.84
PVC or Steel Cables	p.84

### Type I



### Type II

