

# GP25

## Efficient, High-Speed Robot

### Key Benefits

High payload, axis speed and wrist allowable moment ratings

Space-efficient design

Engineered for easy installation, operation and maintenance

### Specifications

25 kg payload

1,730 mm horizontal reach

3,089 mm vertical reach

±0.06 mm repeatability

### Applications

Assembly

Dispensing

Material Handling

Material Removal

Packaging

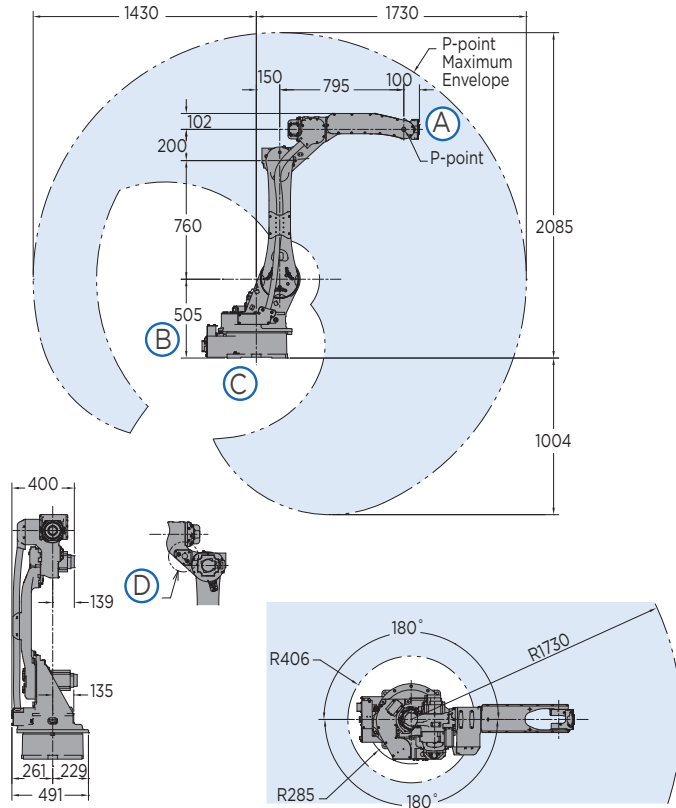
### Controller

YRC1000

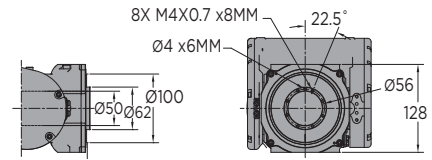


- Increase your productivity with the fast and efficient GP25 robot.
- All axis speeds have been increased, some over 40%, surpassing other robots in its class.
- Minimum acceleration/deceleration times provide high performance.
- Reduced interference design allows close proximity placement of robots.
- Hollow upper arm provides optimal cable protection and longer life while simplifying programming. A 50 mm clearance through axes 4-6 encloses the cable and protects it from wear, interference or snagging.
- Patented double yoke upper arm design provides additional strength if the robot is crashed. Much stronger than other six-axis integrated cable designs.
- High wrist allowable moment for accurate and repeatable handling.
- Increased 25 kg payload, as well as increased moment and inertia ratings over previous models, allow larger and heavier loads to be carried by the robot.
- Single power and control cable reduces wiring time and increases work efficiency.
- New robot harness design for improved diagnostics and maintenance.
- Home position data can be saved without battery connection for easy maintenance.
- NSF-H1 certified food-grade lubricant option available for food or consumer product packaging environments.
- The GP25 has an IP67-rated wrist and an IP54 body standard. An XP (eXtra Protection) package that increases the body protection rating to IP65 is available.
- The GP25 can be floor-, wall-, tilt- or ceiling-mounted. Brakes are included on all axes.
- Compact YRC controller utilizes the lightweight standard teach pendant with intuitive programming.

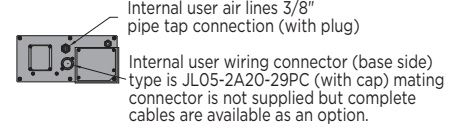
# GP25 Robot



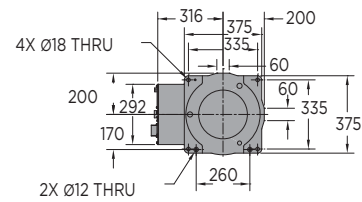
## VIEW A



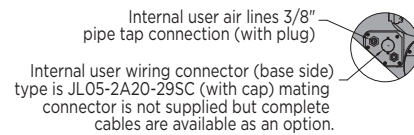
## VIEW B



## VIEW C



## VIEW D



All dimensions are metric (mm) and for reference only.  
Request detailed drawings for all design/engineering requirements.

## SPECIFICATIONS

Axes	Maximum motion range [°]	Maximum speed [°/sec.]	Allowable moment [N•m]	Allowable moment of inertia [kg•m <sup>2</sup> ]
S	±180	210	-	-
L	+155/-105	210	-	-
U	+160/-86	265	-	-
R	±200	420	52	2.3
B	±150	420	52	2.3
T	±455	885	32	1.2

Specifications for GP25 with XP package may be different.

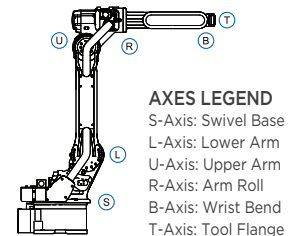
Mounting Options: Floor, Wall, Tilt or Ceiling

\* The MLX300 software option is not available for use with arc or spot welding applications. MLX300 fieldbus cards, I/O cards and vision equipment must be purchased separately from the supplier. All peripherals are programmed using a PLC.

Item	GP25
Controlled axes	6
Maximum payload [kg]	25
Repeatability [mm]	±0.06
Horizontal reach [mm]	1,730
Vertical reach [mm]	3,089
Weight [kg]	250
Internal user I/O cable	17 conductors w/ ground
Internal user air line	(1) 3/8" connection
Power requirements	380-480 VAC
Power rating [kVA]	2.0

## Options

- Robot risers and base plates
- Extended length manipulator cables
- Wide variety of fieldbus cards
- External axes
- PLC integration via MLX300 software option\*
- Functional Safety Unit (FSU)
- MotoSight™ 2D and 3D vision



## Yaskawa America, Inc. | Motoman Robotics Division

100 Automation Way  
Miamisburg, OH 45342  
Tel: 937.847.6200 | motoman.com

Motoman is a registered trademark. All other marks are the trademarks and registered trademarks of Yaskawa America, Inc.  
Technical specifications subject to change without notice. DS-739-F ©2019 Yaskawa America, Inc. MAY 2019

# YASKAWA