



PRESS KIT



www.msitec.com

info@msitec.com

Phone (720) 875-9835

8925 E. Nichols Ave Centennial, CO 80112



About MSI Tec

Launched in 1983

Offices in 3 locations: Centennial, CO (HQ), Phoenix, AZ and Irvine, CA

Employees: 50 employees, 21 of which are engineers with an average of 12 years' experience in the automation and motion control industry.

Offerings: A provider of engineered solutions in Industrial Automation, Robotics, and Industrial Networking as well as the sales and support channel of choice for leading manufacturers like Moxa, Omron, Universal Robots, Denso, Advantech, Unitronics and more. See full line card at: <https://www.msitec.com/info-center/line-card/>.

Core Competencies: Distribute products and engineering services in Motion Control Distribution and through our engineering technology "Tec" Groups – Electrical Mechanical (EMTEC) and Industrial Computing and Networking (CTEC)

MSI Tec has many different avenues and methods to market. By leveraging our core competencies and company values we strive to provide our partners (both customer and vendors) the best solution both technically and commercially to solve their automation challenges.

Areas of specialization:

- Automation
- Motion Control
- Robotics
- Industrial Computing & Networking Solutions
- Machine Intelligence
- Remote Monitoring
- Safety & Sensors

Our Vision: To be the provider of choice to our customers, the channel of choice to our suppliers, and a company that attracts and retains the very best talent.

Our Mission: To partner with our customers to improve productivity via the application and development of technology.

CONTACT INFORMATION

Media Enquiries:

Susan Liptak, Marketing Specialist
Susan.Liptak@msitec.com
8925 E. Nichols Ave Centennial, CO 80112
Phone (720) 875-9835

Links & Downloads:

Company website: www.msitec.com

Company Product Line Card: <https://www.msitec.com/info-center/line-card/>

Visit online press kit at <https://www.msitec.com/info-center/press-media-kit/>

Online store: store.msitec.com

Download image of [MSI TEC logo](#)

Links to our Social Media Channels: [Linkedin](#) [YouTube](#) [Facebook](#) [Twitter](#)

Office Locations:

COLORADO
8925 E. Nichols Ave Centennial, CO 80112
Phone (720) 875-9835
info@msitec.com

ARIZONA
4050 E. Cotton Center Blvd., Ste. 14, Phoenix, AZ 85040
Phone (602) 426-1333
info@msitec.com

CALIFORNIA
23011 Moulton Pkwy, Ste J1, Laguna Hills, CA 92653
Phone (949) 588-0581
info@msitec.com

MSITEC

PRODUCTIVITY THROUGH TECHNOLOGY

MANUFACTURER PARTNERS

Providing technology solutions and services
for automation applications for over 25 years.

(866) 397-7388

● AUTOMATION & MOTION CONTROL ●



● COMPUTING & NETWORKING ●



● ROBOTICS & ACCESSORIES ●



OFFICES:

AZ - (602) 426-1333
CA - (949) 588-0581
CO - (720) 875-9835
UT - (435) 714-3297

www.msitec.com

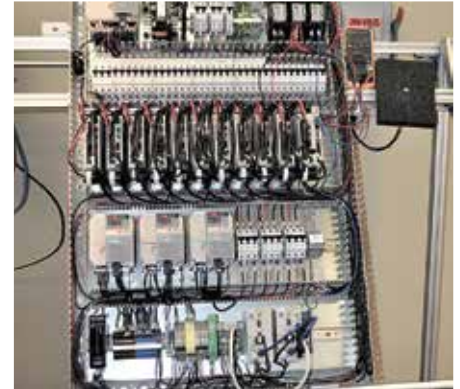
CONTACT US:

(866) 397-7388

[INFO@MSITEC.COM](mailto:info@msitec.com)

● AUTOMATION & MOTION CONTROL

Product Selection Assistance
Turn-Key System Design
Project Development Assistance
Control Panel Design and Fabrication
UL 508A Panel Shop
Programming and Support
Documentation



● INDUSTRIAL NETWORKING

Solutions for Remote Monitoring and Control
Network Design
Network Optimization and Troubleshooting
Security Audits
Training and Education
Pre-Configuration for Easy Deployment



● TURNKEY COMPUTING SOLUTIONS

System Assembly, Burn-In and Testing
Software Imaging
Hardware Engineering/Rapid prototyping
Software/application Development
Custom Firmware Developed and Preloaded
Support and Troubleshooting
Private Labeling



● ROBOTICS & ACCESSORIES

Design, Engineering, Integration and Programming
Product Selection and Start-Up Assistance
End-of-Arm Tooling
Pedestals, Machine Bases and Platforms
Flexible Part Feeding Systems
Integration of Sensing and Safety
Machine Vision



● CUSTOM SUB-ASSEMBLIES

Custom Cabling and Connectors
Multi-axis and Robotic Stage Configuration
Custom Motor Assemblies and Enclosures
Leadscrew Assemblies
Mechanical Sub-Assemblies

