

Product Catalog

Mowers



WALKER
Fast, Easy, Beautiful Mowing

walker.com



From the very beginning, Walker Mowers have been different from other lawn mowers. Our family was frustrated with the challenges we were having in mowing our own lawns quickly, easily, and with satisfying results. There was no riding mower available to mow the way we wanted, so we designed and built our own.

Since my dad, brother, and I first designed it in 1977, the Walker Mower has continued to develop with the goal of fast, easy, beautiful mowing of landscaped properties. Every time we improve the Walker Mower design we hold ourselves to that standard. For this reason, the Walker Mower will always be different.

What makes owning a Walker truly special? You are not just buying an American made mower that is hand-built with pride, you are beginning a relationship that we take seriously. We look forward to building you a mower that will exceed your expectations, and we look forward to meeting you.



Bob Walker

Bob Walker
President, Walker
Manufacturing

Front-Mount Deck

Achieving a beautiful cut has been our focus from the very first Walker Mower design. Positioning the mowing deck in front of the machine is fundamental to producing high-quality results. The front-mount deck of the Walker reduces impact on the turf prior to cutting, resulting in a more consistent, carpet-like finish. This result is achieved by transferring weight from the deck caster tires which minimizes matting of the grass.

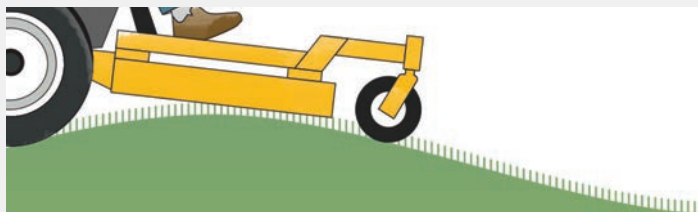
The Walker torsion-flex carrier frame allows the deck to freely articulate and flex laterally, this produces a smooth cut, even over complicated ground contours. This makes Walker Mowers ideal for mowing uneven turf.



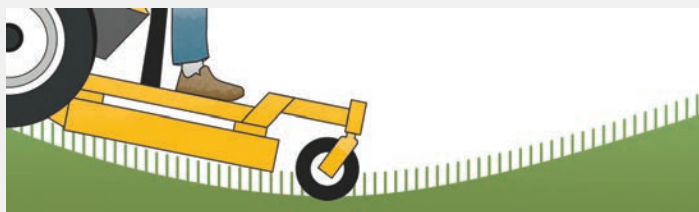
Short Coupled Deck

Front-mount decks also create a shorter distance between the contact point of the drive tire and the contact point of the front caster tire, allowing Walker decks to precisely follow ground contours. Compared to mid-mount hanging decks, Walker mowing decks scalp less and leave less uncut grass in the valleys of ground contours.

SCALP LESS GRASS ON THE CREST

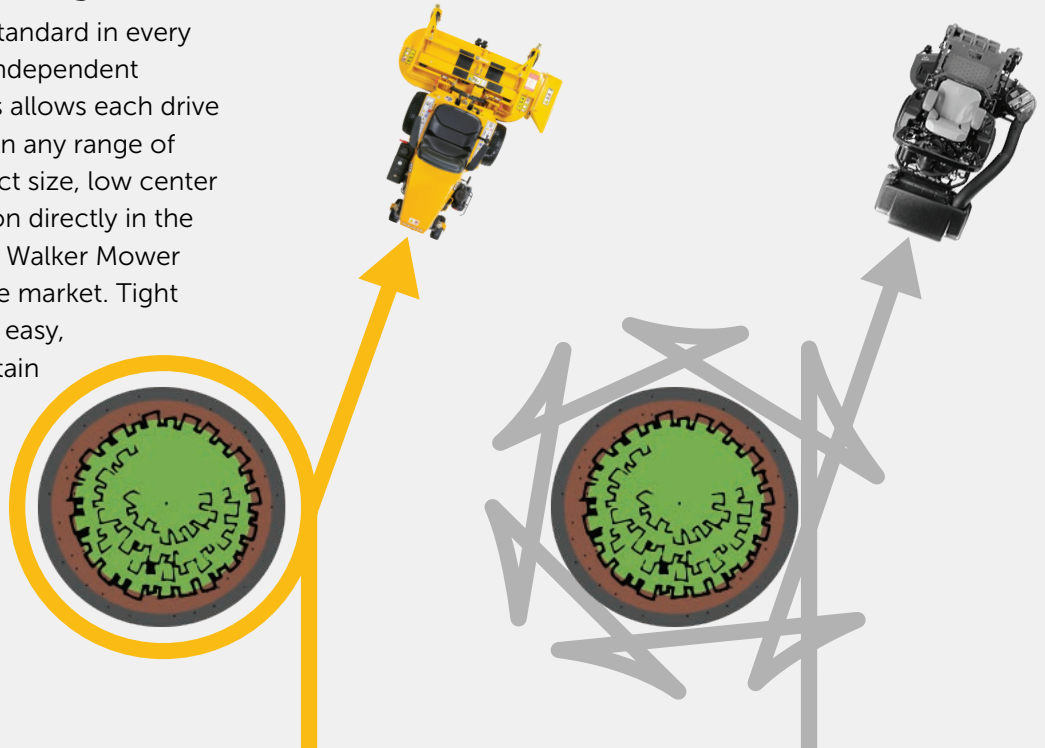


CUT MORE GRASS IN THE VALLEY



Fast On-The-Job Mowing

Zero-turn maneuverability is standard in every Walker Mower through dual, independent hydrostatic transmissions. This allows each drive tire to operate independently in any range of motion. Paired with its compact size, low center of gravity, and operator position directly in the center of the rotation axis, the Walker Mower is the most agile mower on the market. Tight trimming is fast, accurate, and easy, allowing the operator to maintain constant forward motion, increasing productivity and quality of mowing.



Precision Steering and Handling

With an operator-friendly combination of finger-tip steering and the Forward Speed Control, the Walker Mower precisely goes where you want it to with little effort.

FORWARD SPEED CONTROL

Once in the drive position, the forward speed control uses a friction lock to work as a cruise control, allowing the operator to control the mower by simply applying pulling pressure to the steering levers. To stop, pull the forward speed control back to the neutral/park position.

STEERING LEVERS

Walker Mower steering levers take control the moment pressure is applied. Each steering lever is spring-dampened, providing smooth machine operation. The operator easily steers the machine by controlling both levers with a single hand using gentle fingertip pressure. The steering system is designed for precise control using optimal linkage geometry and high quality components.



Balance and Hillside Stability

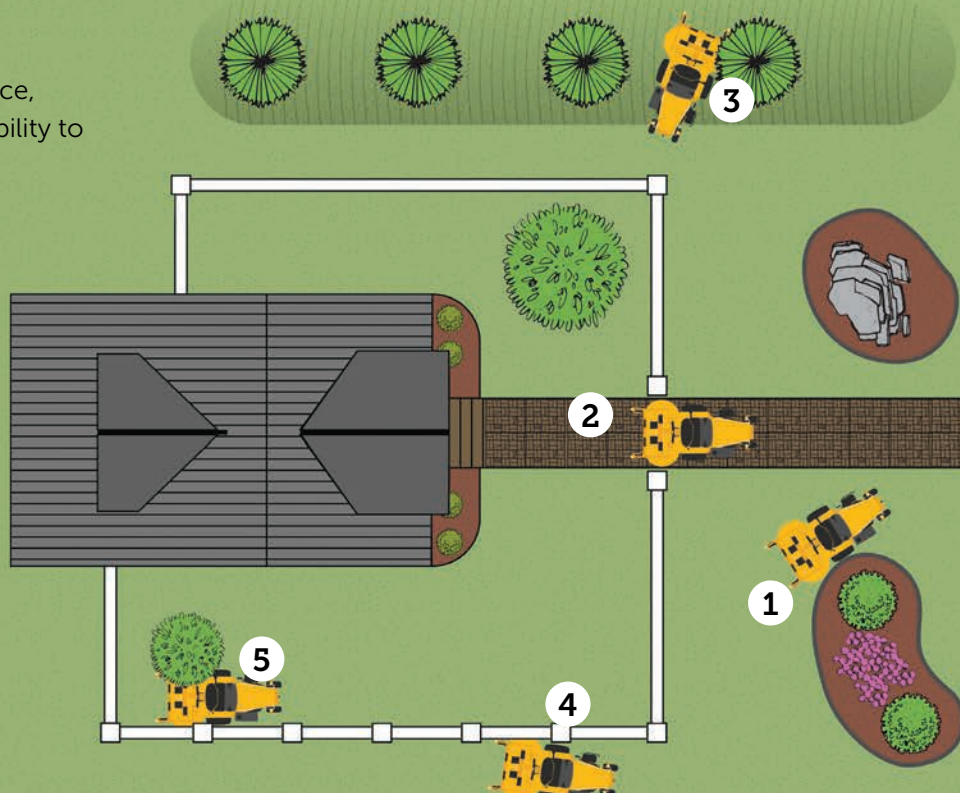
Predictable traction is fundamental to confident operation. The Walker front-mount configuration with drive tires in the center of the machine and lower overall weight make the Walker Mower a superior hillside performer. The deck counterweight springs further enhance the traction of the Walker by transferring weight from the deck to the drive tires.



Agility

The cumulative effect of compact size, balance, and precision steering gives the Walker the ability to complete common mowing tasks quickly:

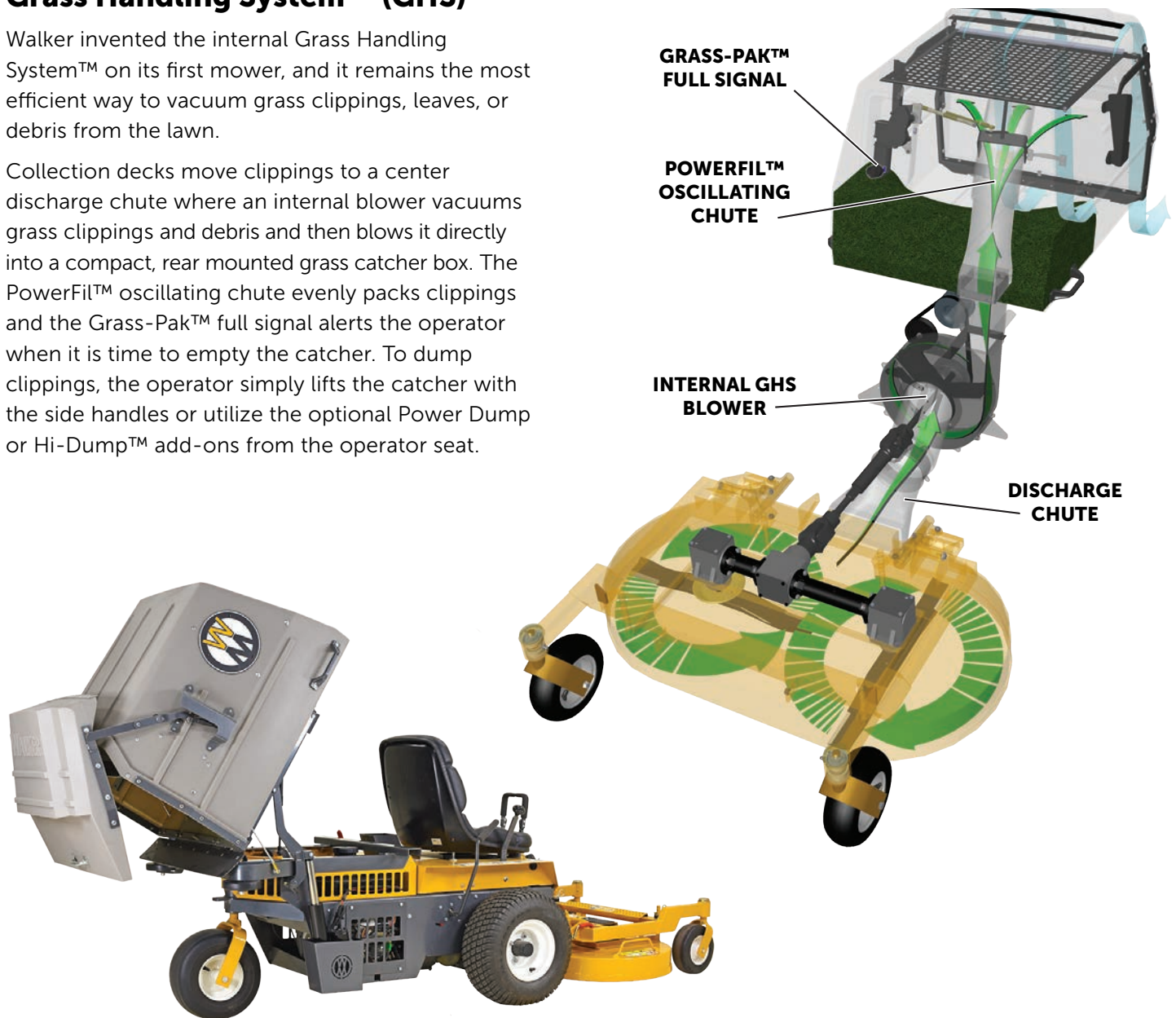
1. **Bed Contours:** Navigate contours with speed and precision.
2. **Gates:** Effortlessly pass through yard gates without wasting time grabbing a different piece of equipment.
3. **Berms:** Even the smallest slopes or pitches require good traction to navigate quickly.
4. **Fence Lines:** Predictable steering allows for quick maneuverability.
5. **Tight Corners:** Tight corners and low hanging obstacles do not slow down the compact Walker Mower.



Grass Handling System™ (GHS)

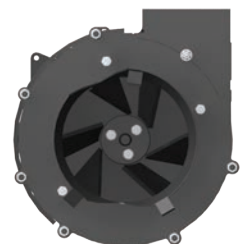
Walker invented the internal Grass Handling System™ on its first mower, and it remains the most efficient way to vacuum grass clippings, leaves, or debris from the lawn.

Collection decks move clippings to a center discharge chute where an internal blower vacuums grass clippings and debris and then blows it directly into a compact, rear mounted grass catcher box. The PowerFil™ oscillating chute evenly packs clippings and the Grass-Pak™ full signal alerts the operator when it is time to empty the catcher. To dump clippings, the operator simply lifts the catcher with the side handles or utilize the optional Power Dump or Hi-Dump™ add-ons from the operator seat.



Integrated Components

Walker Mowers are engineered to ensure the entire grass collection system is internal. This intentional effort has allowed Walker Mowers to retain their compact footprint. There are no bulky tubes or bags extending beyond the footprint of the mower. By positioning the GHS blower internally, a powerful vacuum effect is achieved, leaving a carpet-like appearance to your lawn in spring, summer, and fall.



INTERNAL GHS BLOWER

Interchangeable Decks and Add-ons

Whether handling grass, leaves, debris, or snow, all Walker Mowers are designed for year-round productivity. Decks can easily be switched for larger, smaller, collection, mulching, or discharge decks, to suit the task at hand—and with dozens of add-ons, such as a dethatcher, dozer blades, snowblowers, and enclosed cabs, the Walker is one of the most versatile mowers you can buy.



Tilt-Open Bodies and Tilt-Up Decks

Each Walker features a tilt-open body, quickly exposing the drive belts, electronics, engine, and drivetrain making service and maintenance easy. No special tools or equipment are needed. Simply release the body latch and the gas spring assisted enclosure opens up for unobstructed access to all of the Walker's working components.

All Walker decks quickly tilt-up, making maintenance tasks safe and easy. It takes seconds to unlock, lift, and secure the deck in an up position, providing access to the blades, housing, and chute. Model H tractors also have an optional Power Tilt-Up™ deck lift. Walker tilt-up decks also minimize wasted space when storing the Walker mower.





Model S

The Model S is the quintessential Walker Mower. Inspired by the original 1977 prototype, the Model S is simple and easy to operate, and very efficient at mowing residential properties. With Walker's Grass Handling System™, a patented Thru-Shaft™ PTO blower design, and reduced weight and cost, the Model S is the perfect entry-level mower for experiencing Walker's signature beautiful cut and zero-turn productivity.



Available with two different horsepower engines, the Model S is perfect for residential lawns. The Model S features Walker's Grass Handling System™ (GHS) with a patented 12.75 inch Thru-Shaft™ PTO GHS blower and a 7.0 bushel grass catcher box. The compact design, coupled with Walker's precision steering levers and Forward Speed Control, make getting in and out of tight landscape features and obstacles possible, minimizing hand-held trimming and walk-behind mower time.

The lightweight, balanced design improves steering agility, shortening overall job time. Integrated Hydro-Gear ZT3100 transmissions are durable, and provide precise maneuverability and industry-wide service and support. The Model S is engineered for affordability and efficiency. With commercial-grade components and multiple configurable add-ons, the Model S is a serious tool for commercial operators maintaining compact, complex properties.



Pictured: S18 with a 48" collection deck

Model S Standard Features

- High capacity, commercial engine air filtration
- Precision steering system
- Forward Speed Control
- Hydro-Gear ZT3100 transmissions
- Tilt-up decks and tilt-open body
- Flexible deck carrier frame
- Grass Handling System™ (GHS)
- 12.75 inch Thru-Shaft™ PTO GHS blower
- Oscillating PowerFil™ chute with Grass-Pak™ full signal
- 7 bushel (8.7 cu.ft) grass catcher

S14i

- 14 HP Kohler Command Pro EFI engine
- Superior fuel efficiency
- 6.5 MPH ground speed
- 1.9 gallon fuel tank
- 10 compatible mowing decks: 3 collection, 4 mulching, 3 discharge

S18

- 18 HP Briggs and Stratton Vanguard engine
- Increased displacement and torque
- 7.4 MPH ground speed
- 4 gallon fuel tank
- 14 compatible mowing decks: 4 collection, 5 mulching, 5 discharge

Model S Popular Add-ons

- Power Dump grass catcher box
- LED headlights
- Adjustable footrests
- Spring-tine Dethatcher attachment
- 48 inch Dozer Blade
- 36 inch single-stage Snow Blower



See more details at: walker.com/model-s

Model C

The Model C is the original Walker commercial lawn mower. Since its introduction in 1986 the Model C has been continually refined and improved with the commercial operator in mind, especially those who maintain residential properties. The Model C is a compact and versatile mower with impressive productivity.



The Model C is simple, light weight, and features components that keep it narrow and compact. Operators can quickly get in and out of places that are simply inaccessible with other mowers. Tight corners, overhanging obstacles, gates, and narrow strips of grass are no problem for the Model C.

The Model C includes Walker's Grass Handling System™ (GHS) with a 10.5 inch high-speed blower and 7.0 bushel grass catcher with PowerFil™ oscillating chute and Grass-Pak™ full signal. The GHS system, combined with tilt-open bodies, tilt-up decks, precision steering and handling, and Kohler Command Pro engines, make lawn maintenance with the Model C easy and enjoyable.



Pictured: C19i with a 42" collection deck

Model C Standard Features

- High capacity, commercial engine air filtration
- Precision steering system
- Forward Speed Control
- Eaton Model 7 transmission with ductile cast iron gearbox final drive
- Tilt-up deck and tilt-open body
- Flexible deck carrier frame
- 4 gallon fuel tank
- Grass Handling System™ (GHS)
- 10.5 inch GHS blower
- Oscillating PowerFil™ chute with Grass-Pak™ full signal
- 7 bushel (8.7 cu.ft) grass catcher

C19

- 19 HP Kohler Command Pro CH620 engine
- Entry level commercial mower
- 18 compatible mowing decks: 5 collection, 6 mulching, 7 discharge

C19i

- 19 HP Kohler Command Pro ECH630 EFI engine
- Superior fuel efficiency
- 19 compatible mowing decks: 6 collection, 6 mulching, 7 discharge

Model C Popular Add-ons

- LED headlights
- Comfort Seat
- Spring-tine Dethatcher attachment
- Operator soft cab
- Implement hitch with electric ram lift
- 42 inch two-stage Snow Blower
- 47 inch Rotary Broom
- 48 inch Dozer Blade



See more details at: walker.com/model-c

Model T

The Model T is the standard for what commercial operators expect from a lawn mower. Intended specifically for commercial use, every aspect of the Model T has been designed to meet the most demanding expectations of operators who want fast and easy mowing with beautiful results. It is the go-to Walker for commercial operations and a favorite among discerning customers.



With three engine choices—each catering to specific commercial needs—and compatibility with virtually every Walker deck and add-on, the Model T provides unmatched versatility and year-round value.

The Model T is equipped with a large, 10 bushel (12.4 cu.ft) GHS grass catcher allowing extended mowing time between dumping. Like every Walker, the Model T features dual, independent hydrostatic transmissions, precision steering levers, and a separate Forward Speed

Control providing precise, constant forward motion. No other mower steers like a Walker, providing agile, zero-turn mowing with fingertip control and efficiency—all with the signature clean, manicured cut of the Walker Mower.

For operators wanting a single machine that will handle the toughest property maintenance challenges, the Model T is the solution.



Pictured: T23 with a 48" collection deck

Model T Standard Features

- Commercial air filter with remote air intake and turbine pre-cleaner
- Precision steering system
- Forward Speed Control
- Eaton Model 7 transmission with ductile cast iron gearbox final drive
- Flexible deck carrier frame
- Tilt-up deck and tilt-open body
- 4 gallon fuel tank
- Grass Handling System™ (GHS)
- 10.5 inch GHS blower
- Oscillating PowerFil™ chute with Grass-Pak™ full signal
- 10 bushel (12.4 cu.ft) grass catcher
- 20 compatible mowing decks: 6 collection, 6 mulching, 8 discharge

T23

- 23 HP Kohler Command Pro CH680 engine
- Carbureted engine
- Entry level Model T commercial mower
- Comfort Seat with optional armrests

T25i

- 25 HP Kohler Command Pro ECH740 EFI engine
- Superior fuel efficiency
- Simple, reliable operation
- Comfort Seat with optional armrests

T30i

- 30 HP Kohler Aegis EFI liquid cooled engine
- Superior fuel efficiency
- Liquid cooled with self-cleaning radiator
- Consistent engine temperatures in all conditions
- Grammer 4-way adjustable Suspension Seat

Model T Popular Add-ons

- Hi-Dump™ grass catcher system raises 67 inches with automatic catcher door actuation
- LED headlights
- Spring-tine Dethatcher attachment
- Operator soft cab
- Implement hitch with electric ram lift
- 42 inch two-stage Snow Blower
- 47 inch Rotary Broom
- 48 inch Dozer Blade



See more details at: walker.com/model-t

Model D

The Model D is an industrial-grade Walker Mower with impressive power and agility. The Model D is the only diesel powered Walker Mower equipped with the Walker Grass Handling System™ (GHS). The Model D effortlessly handles the harshest mowing environments and extended running times without compromising on efficiency or power.



The Model D has the same footprint as the Model T, making it compact and capable of mowing both small and large properties while also boasting a transverse mounted, 3 cylinder diesel engine and liquid cooling. A self-cleaning, reversing radiator fan keeps the Model D cool and efficient even in the toughest conditions.

Weighing just under 1,200 lbs, the Model D is one of the lightest diesel-equipped commercial mowers on the market. This protects the turf from matting and rutting

while allowing the Model D to remain well-balanced and agile. Compatible with nearly all Walker mowing decks and add-ons, the Model D is a favorite with municipalities and institutional customers.

A non-collection version without the GHS blower and Grass Catcher is also available. The non-collection model features a utility dump-bed in place of the grass catcher.



Pictured: D21d with a 52" collection deck

D21d

- 20.9 HP three cylinder Kubota D722 diesel engine
- Automatic glow plug preheat
- Transverse engine mount
- Liquid cooled with self-cleaning radiator
- Impressive 34 ft•lb torque
- High capacity, commercial engine air filtration
- Precision steering system
- Forward Speed Control
- Eaton Model 7 transmission with ductile cast iron gearbox final drive
- Grammer 4-way adjustable Suspension Seat
- Tilt-up deck and tilt-open body
- Flexible deck carrier frame
- High output 40-amp charging system
- Grass Handling System™ (GHS)
- 10.5 inch GHS blower
- Oscillating PowerFil™ chute with Grass-Pak™ full signal
- 10 bushel (12.4 cu.ft) grass catcher
- 20 compatible mowing decks: 6 collection, 6 mulching, 8 discharge

Model D Popular Add-ons

- Hi-Dump™ grass catcher system raises 67 inches with automatic catcher door actuation
- LED headlights
- Spring-tine Dethatcher attachment
- Operator soft cab
- Implement hitch with electric ram lift
- 42 inch two-stage Snow Blower
- 47 inch Rotary Broom
- 48 inch Dozer Blade



See more details at: walker.com/model-d

Model B

The Model B is compact and fast. It is a Walker Mower designed to run side discharge and mulch decks on difficult properties with hills, uneven terrain, and obstacles, while leaving a beautiful cut. With four different models to choose from, the Model B is configurable and versatile to meet the professionals' expectations.



Like no other mower in the mid-size, zero-turn class, the Model B is productive and compact. The Model B possesses the distinct Walker characteristics of being agile, versatile, and easily maintainable while delivering the Walker beautiful cut. The Model B is light on the turf, which not only protects against rutting and other property damage, but also improves efficiency by reducing loss of motion and maneuvering energy. With a low center of gravity and balanced design, the Model B is agile and demonstrates impressive hillside

performance, allowing operators to mow more places with a single machine.

With interchangeable decks, attachments, and add-ons like LED headlights and a Utility Bed, the Model B is a productive and versatile year-round machine. Available in four unique configurations with a variety of power and fuel options, there is a Model B suitable for any situation.



Pictured: B23i and B25p with a 48" mulching deck

Model B Standard Features

- High capacity, commercial engine air filtration
- Precision steering system
- Forward Speed Control
- Hydro-Gear ZT3100 transmissions
- Flexible deck carrier frame
- Tilt-up deck and tilt-open body

B18

- 18 HP Briggs & Stratton Vanguard V-Twin engine
- 4 gallon fuel tank
- 10 compatible decks: 5 mulching, 5 discharge

B19

- 19 HP Kohler Command Pro CH620 engine
- 4 gallon fuel tank
- 13 compatible decks: 6 mulching, 7 discharge

B23i

- 23 HP Kohler Command Pro ECH730 EFI engine
- Superior fuel efficiency
- Comfort Seat
- 4.7 gallon fuel tank
- 14 compatible decks: 6 mulching, 8 discharge

B25p

- 25 HP Kohler Command Pro PCH740 propane EFI engine
- Superior fuel efficiency and economy
- Comfort Seat
- Standard 7.9 gal (33.5 lb) propane tank
- 14 compatible decks: 6 mulching, 8 discharge

Model B Popular Add-ons

- Utility bed
- LED Headlights
- Comfort Seat for B18 and B19
- Suspension Seat for B23i and B25p
- Spring-tine Dethatcher attachment
- 48 inch Dozer Blade
- 36 inch single-stage Snow Blower



See more details at: walker.com/model-b

Model H

The Walker Model H stands alone in its class for high productivity and improved return on investment. When fast, beautiful results are demanded on vastly different properties, turf types, and conditions, the Model H delivers for the most discerning operators. A variety of attachments and add-ons keep the Model H productive year-round with excellent results.



The Model H is a high capacity machine that offers four engine options and efficient machine design for overall fuel, time, and operating cost savings.

With large 23 inch drive tires, Hydro-Gear ZT3400 transmissions, and Walker's precise steering system with Forward Speed Control, the Model H is fast and maneuverable, with easy operation. Three Model H-specific decks feature an integrated deck height

adjuster with cutting height up to 5 inches with standard Tilt-Up functionality. Also, an optional Power Tilt-Up™ deck lift is available for ease of maintenance, storage, and operation. The Model H features 9.4 gallons total fuel capacity, a standard Grammer Suspension Seat, dual spread tailwheels with Walker's puncture resistant caster tires, and adjustable footrests. Operators can mow all day in comfort, even in rough mowing terrain.



Pictured: H37i, H38i, and H24d all with a 64" rear discharge deck

Model H Standard Features

- Grammer 4-way adjustable Suspension Seat
- High capacity, commercial engine air filtration
- Precision steering system
- Forward Speed Control
- Hydro-Gear ZT3400 transmissions
- 3 Model H specific mowing decks
- Flexible deck carrier frame
- Adjustable footrests
- Tilt-up deck and tilt-open body
- 9.4 gallon fuel capacity, dual tanks with selector valve

H24d

- 23.4 HP Kohler KDW1003 diesel engine
- Automatic glow plug preheat
- Rubber isolation engine mounts
- Liquid cooled with self-cleaning radiator
- Standard ROPS and Utility Bed

H27i

- 26.5 HP Kohler Command Pro ECH749 EFI engine
- Superior fuel efficiency
- Lightest weight Model H, minimizing tire marks and turf damage

H37i

- 37 HP Briggs and Stratton Vanguard Delphi fuel injected engine
- Superior fuel efficiency
- High output 50-amp charging system

H38i

- 38 HP Kohler Command Pro ECH980 EFI engine
- Increased displacement and torque
- Cyclonic high-capacity air filter

Model H Popular Add-ons

- Power Tilt-Up™ deck lift
- Operator hard cab
- LED headlights
- Deck arm adapter Kit, allowing compatibility with 6 additional Walker mowing decks
- Implement hitch with electric ram lift
- 50 inch two-stage Snow Blower
- 60 inch Rotary Broom
- 60 inch Dozer Blade



See more details at: walker.com/model-h

Decks

Each Walker Deck is uniquely configured to meet a very specific maintenance niche. Whether the most important consideration in looking for the perfect deck is cutting width, handling grass clippings, material capacity, or grass type, there is a Walker deck that will meet the specific maintenance need.



Collection Decks

Collection decks are compatible with Walker Grass Handling (GHS) models S, C, T, and D. Clippings are passed from the deck through the internal blower and discharge chute, and stored in the GHS catcher box.



C36R
36 inch
Reverse Rotation



C42
42 inch
Standard Rotation



C42R
42 inch
Reverse Rotation



C48
48 inch
Standard Rotation



C48R
48 inch
Reverse Rotation



C52R
52 inch
Reverse Rotation

Standard vs Reverse Rotation

Standard rotation blades spin toward the center of the deck, moving material directly into the discharge chute. They are ideal for users who need to collect thick, heavy clippings including leaves and other yard debris.

Reverse rotation blades spin away from the center of the deck, moving material around the perimeter of the deck before it is channeled into the discharge chute. Reverse rotation decks are ideal for cutting to the full width of the deck housing with exceptional cut quality.

Side Discharge Decks

Compatible with all Walker Mowers, side discharge decks cleanly and evenly discharge cut grass from under the deck housing.



S36
36 inch
Gear Drive



S42
42 inch
Gear Drive



S42B
42 inch
Belt Drive



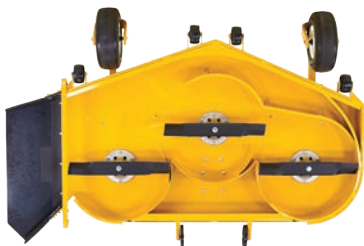
S48
48 inch
Gear Drive



S52
52 inch
Belt Drive



S56
56 inch
Gear Drive



S60
60 inch
Belt Drive



S62
62 inch
Belt Drive



S74
74 inch
Gear Drive

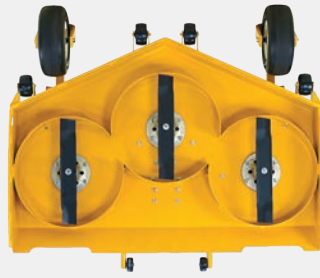
Gear vs Belt Drive

Walker gear driven decks utilize cast iron or aluminum gearboxes with bevel Zerol gear technology for durable and quiet function. The timed blades provide exceptional cut quality and striping, and allow a compact design for improved trimming and maneuverability.

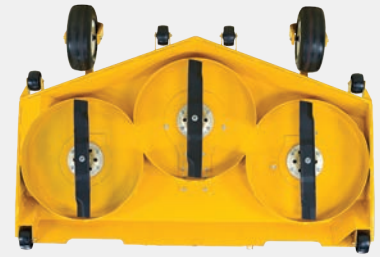
Walker belt driven decks use a robust spindle and belt-tensioning idler design, and are best suited for rougher mowing conditions with debris or ground contact occurring. Walker belt driven decks feature tool free belt change and easy to maintain spindles and components.

Rear Discharge Decks

Designed specifically for Model H mowers with high-production and fast mowing speeds, Walker rear discharge decks process clippings numerous times before cleanly and evenly discharging clippings out the back of the deck, leaving an evenly mulched look to the turf.



R52
52 inch



R64
64 inch

Mulching Decks

Mulching decks are designed to efficiently re-cut material to fine particles and return it to the turf leaving a beautiful cut.



M36
36 inch



M42
42 inch



M42A
42 inch



M42B
42 inch



M48
48 inch



R52K
52 inch
Baffle Kit for S52B



R60K
60 inch
Baffle Kit for S60

Available Deck Add-ons

- Spring-tine Dethatcher attachment
- Boom Sprayer attachment
- Pneumatic deck tires
- Deck Height Adjuster
- Adjustable footrests
- Deck Cuff kit
- Break Away blades
- Curb Jumper
- Power Tilt-Up™ deck lift for S60, R52, R64 decks

Deck Compatibility

Collection Decks

	MS	MC	MT	MD	MB	MH
C36R	●	●	●	●		
C42/R	●	●	●	●		
C48/R	■	●	●	●		
C52R		◆	●	●		

■ Model S18 only, C48R deck only.

◆ Model C19i only.

Discharge Decks

	MS	MC	MT	MD	MB	MH
S36	●	●	●	●	●	
S42/B	●	●	●	●	●	
S48	■	●	●	●	●	▲
S52		●	●	●	^	▲
R52						●
R64						●
S56	■	●	●	●	●	▲
S60						●
S62		●	●	●	^	▲
S74			●	●	#	▲

^ B19, B23i, B25p can use S52 and S62

B23i and B25p can use S74

▲ Requires Deck Arm Adapter Kit P/N 2430-10

■ Model S18 only

Mulching Decks

	MS	MC	MT	MD	MB	MH
M36	●	●	●	●	●	
M42	●	●	●	●	●	
M42A	●	●	●	●	●	
M42B	●	●	●	●	●	
M48	■	●	●	●	●	▲
M52K		●	●	●	^	▲
M60K						●

▲ Requires Deck Arm Adapter Kit P/N 2430-10

^ B19, B23i, and B25p can use S52 w/ Mulch Kit

■ Model S18 only



Walker Mower Specifications

Model	S14i	S18	C19	C19i	T23	T25i	T30i	D21d	B18	B19	B23i	B25p	H24d	H27i	H37i	H38i
Engine	Kohler ECH440	B85 Vanguard	Kohler CH620	Kohler ECH630	Kohler CH680	Kohler ECH740	Kohler LH775	Kubota D722	B85 Vanguard	Kohler CH620	Kohler ECH730	Kohler PCH740	Kohler KDW1003	Kohler ECH749	B85 Vanguard	Kohler ECH980
Fuel System	EFI	Carb	Carb	EFI	Carb	EFI	EFI	Diesel	Carb	Carb	EFI	Propane EFI	Diesel	EFI	EFI	EFI
Cooling System	Air	Air	Air	Air	Air	Air	Liquid	Liquid	Air	Air	Air	Air	Liquid	Air	Air	Air
Displacement (cc)	429	570	674	694	674	747	747	719	570	674	747	747	1028	747	993	999
HP @ 3600 RPM	14	18	19	19	22.5	25	30	20.9	18	19	23	25	23.7	26.5	37	38
Max Torque (ft•lbs)	22.7	29.2	35	34.2	37.9	38.8	47.7	34	29.5	35	38.1	39	36.8	40	†	53
Fuel Capacity (US Gal)	1.9 (7.2 L)	4 (15.1 L)	4 (15.1 L)	4 (15.1 L)	4.7 (17.8 L)	4.7 (17.8 L)	4.7 (17.8 L)	4.7 (17.8 L)	4 (15.1 L)	4 (15.1 L)	4.7 (17.8 L)	7.9 (33 lb)	9.4 (35.6 L)	9.4 (35.6 L)	9.4 (35.6 L)	9.4 (35.6 L)
Drive Tire Size (diameter x width)	18x7	18x7	18x8.5	18x8.5	18x9.5	18x9.5	18x9.5	18x9.5	18x8.5	18x8.5	18x8.5	18x8.5	22x10.5	22x10.5	22x10.5	22x10.5
Top Speed (MPH & km/h)	6.5 (10.5)	7.4 (12)	7 (11.3)	7 (11.3)	7 (11.3)	7 (11.3)	7 (11.3)	7 (11.3)	8 (13)	8 (13)	8 (13)	8 (13)	10 (16)	10 (16)	10 (16)	10 (16)
Tractor + Deck Length (in)	89.25	89.25	89.25	89.25	93	93	93	93	90.75	90.75	90.75	90.75	107.75	107.75	107.75	107.75
Tractor + Deck Tilted Length (in)	77	77	77	77	77	77	77	77	72	72	72	72	87.75	87.75	87.75	87.75
Height (in)	46.5	46.5	47.5	47.5	50	50	50	50	39.5	39.5	39.5	42.75	46.75**	46.75	46.75	46.75
Wheel Base (in)	42.25	42.25	41	41	41	41	41	41	40	40	40	40	45	45	45	45
Tractor Width (in)	36.25	36.25	37.75	37.75	39	39	39	39	38.5	38.5	38.5	38.5	46.5	46.5	46.5	46.5
Tractor Weight (lb & kg)	596 (270)	636 (289)	734 (333)	739 (335)	790 (358)	787 (357)	841 (381)	959 (435)	584 (265)	583 (264)	588 (267)	625 (283)	997 (452)	748 (340)	778 (353)	802 (364)
Tractor + Deck** Weight (lb & kg)	787 (357)	827 (390)	925 (420)	930 (422)	1009 (458)	1006 (457)	1060 (471)	1178 (534)	790 (358)	789 (358)	794 (362)	831 (376)	1434 (650)	1185 (537)	1215 (551)	1239 (562)

*MS: DC36, MC: DC42, MT & MD: DC48, MB: DS48, MH: DR64. **ROPs folded. †Not provided by manufacturer

- Gasoline engines require unleaded 87+ octane
- Diesel engines require 2-D full pressure lube systems with filter. S14i has mechanical splash lube system
- 12V electrical systems
- Flywheel alternator charging, D21d has belt driven alternator
- Ignition lockout by seat switch, transmission neutral, blade clutch, and parking brake
- All machines feature dual, independent hydrostatic transmission
- Dual lever steering, precision friction-lock Forward Speed Control lever with neutral/park position
- Internal mechanical parking brake
- Cutting height 1.5" to 4", 1.5" to 4.5", or 1" to 5", varies per model
- Heavy-duty stamped steel cutting blades, tempered
- Blade clutch and brake with manual belt tightener
- Decks and add-ons powered by splined PTO shaft with dual u-joints allowing dynamic articulation
- Deck carrier frame with flexible deck suspension, caster wheels, and counterweight springs
- Welded, heavy gauge, steel chassis
- Welded, 14 gauge steel bodies
- Welded, 11 gauge steel decks

