

2020 Product Catalog

Models, Decks, and Add-ons



walker.com



Table of Contents

Message from Bob Walker	1
The Walker Advantage	
Front-Mount Deck	2
Short-Coupled Deck	2
Fast On-The-Job Mowing	3
Precision Steering and Handling	3
Balance and Hillside Stability	4
Agility	4
Grass Handling System™ (GHS)	5
Integrated Components	5
Interchangeable Decks and Add-ons	6
Tilt-Open Bodies and Tilt-Up Decks	6
Models	
Model S	7
Model C	9
Model T	11
Model D	13
Model R	15
Model B	17
Model H	19
Decks	
Collection Decks	21
Side Discharge Decks	22
Rear Discharge Decks	23
Mulching Decks	23
Deck Compatibility	24
Add-ons: Implements	
Implement Hitch	25
Option: Tail Weights	25
Rotary Broom	26
Dozer Blade (48" or 60")	27
Loader Bucket	28
Debris Blower	28
Two-Stage Snowblower (42" or 50")	29
Add-ons: Attachments	
Operator Cabs	29
ROPS	30
Single-Stage Snowblower 36"	30
Spyker Spreader and Mount	30
Dethatcher	31
Boom Sprayer	32
48" Dozer Blade	32

Add-ons: Options

Comfort Seat 33

Suspension Seat 33

Armrests..... 33

Utility Bed 34

Headlights 34

Cup Holder..... 34

Instrument Panel Cover..... 34

Power Dump..... 35

Hi-Dump®..... 35

Large Hole Screen 36

No-Catch Deflector 36

GHS Blower Lockout..... 36

Dump Bag 36

Dump Bins..... 36

Deck Height Adjuster 37

Deck Height Washers..... 37

Curb Jumper..... 37

Power Tilt-Up®..... 38

Deck Lift..... 38

Break Away Blades..... 38

Adjustable Footrests 38

Deck Cuff 39

Spread Axle Tail Wheel..... 39

Dual Tail Wheel..... 39

Single Wide Tail Wheel..... 39

Tail Wheel Lock 40

18 x 7-8 Turf Tire..... 40

18 x 7-8 Directional AT Tire 40

18 x 8.5-10 Turf Tire 40

18 x 8.5-10 AT Tire..... 41

18 x 9.5-8 Turf Tire 41

18 x 10.5-10 Turf Tire 41

18 x 11-10 AT Tire..... 41

22 x 10.5-12 Turf Tire 41

23 x 10.5-12 AT Tire..... 42

23 x 10.5-12 Directional AT Tire 42

Pneumatic Deck Tire..... 42

Semi-Pneumatic Deck Tire 42

Tire Chains 42

Add-on Compatibility..... 43

Walker Mower Specifications..... Back Cover



From the very beginning, Walker Mowers have been different from other lawn mowers. Our family was frustrated with the challenges we were having in mowing our own lawns quickly, easily, and with satisfying results. There was no riding mower available to mow the way we wanted, so we designed and built our own.

Since my dad, brother, and I first designed it in 1977, the Walker Mower has continued to develop with the goal of fast, easy, beautiful mowing of landscaped properties. Every time we improve the Walker Mower design we hold ourselves to that standard. For this reason, the Walker Mower will always be different.

What makes owning a Walker truly special? You are not just buying an American-made mower that is hand-built with pride, you are beginning a relationship that we take seriously. We look forward to building you a mower that will exceed your expectations, and we look forward to meeting you.



Bob Walker

Bob Walker
President, Walker
Manufacturing

Front-Mount Deck

Achieving a beautiful cut has been our focus from the very first Walker Mower design. Positioning the mowing deck in front of the machine is fundamental to producing high-quality results. The front-mount deck of the Walker reduces impact on the turf prior to cutting, resulting in a more consistent, carpet-like finish. This result is achieved by transferring weight from the deck caster tires which minimizes matting of the grass.

The Walker torsion-flex carrier frame allows the deck to freely articulate and flex laterally; producing a smooth cut, even over complicated ground contours. This makes Walker Mowers ideal for mowing uneven turf.



Short Coupled Deck

Front-mount decks also create a shorter distance between the contact point of the drive tire and the contact point of the front caster tire, allowing Walker decks to precisely follow ground contours. Compared to mid-mount hanging decks, Walker mowing decks scalp less and leave less uncut grass in the valleys of ground contours.

SCALP LESS GRASS ON THE CREST

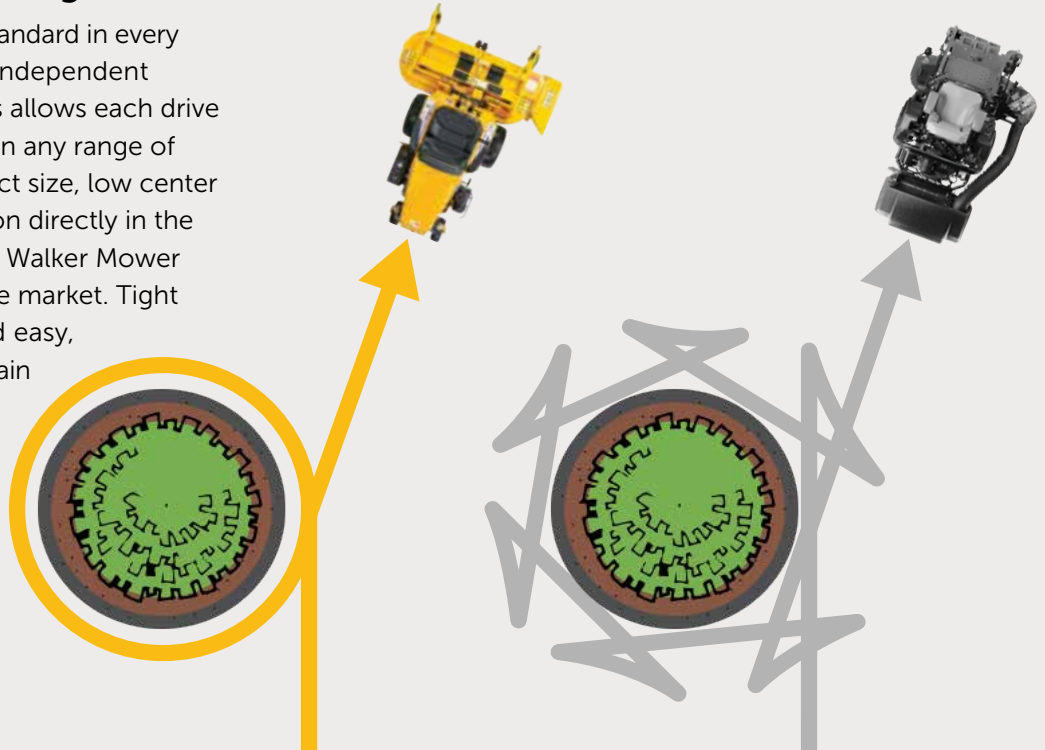


CUT MORE GRASS IN THE VALLEY



Fast On-The-Job Mowing

Zero-turn maneuverability is standard in every Walker Mower through dual, independent hydrostatic transmissions. This allows each drive tire to operate independently in any range of motion. Paired with its compact size, low center of gravity, and operator position directly in the center of the rotation axis, the Walker Mower is the most agile mower on the market. Tight trimming is fast, accurate, and easy, allowing the operator to maintain constant forward motion, increasing productivity and quality of mowing.



Precision Steering and Handling

With an operator-friendly combination of finger-tip steering and the Forward Speed Control, the Walker Mower goes precisely where you want it to with little effort.

FORWARD SPEED CONTROL

Once in the drive position, the Forward Speed Control uses a friction lock to work as a cruise control, allowing the operator to control the mower by simply applying pulling pressure to the steering levers. To stop, pull the Forward Speed Control back to the neutral-park position.

STEERING LEVERS

Walker Mower steering levers take control the moment pressure is applied. Each steering lever is spring-dampened, providing smooth machine operation. The operator easily steers the machine by controlling both levers with a single hand only using gentle fingertip pressure. The steering system is designed for precise control using optimal linkage geometry and high-quality components.



Balance and Hillside Stability

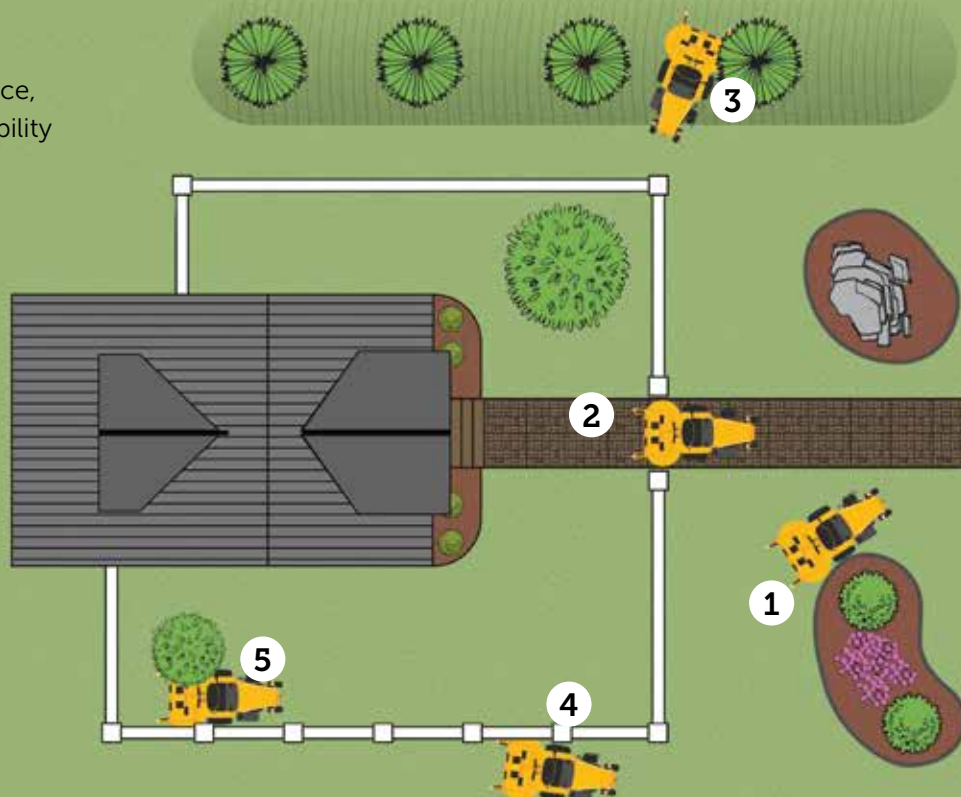
Predictable traction is fundamental to confident operation. With a front-mount configuration, drive tires in the center of the machine, and lower overall weight, the Walker Mower is a superior hillside performer. The deck counterweight springs further enhance the traction of the Walker by transferring weight from the deck to the drive tires.



Agility

The cumulative effect of compact size, balance, and precision steering gives the Walker the ability to complete common mowing tasks quickly:

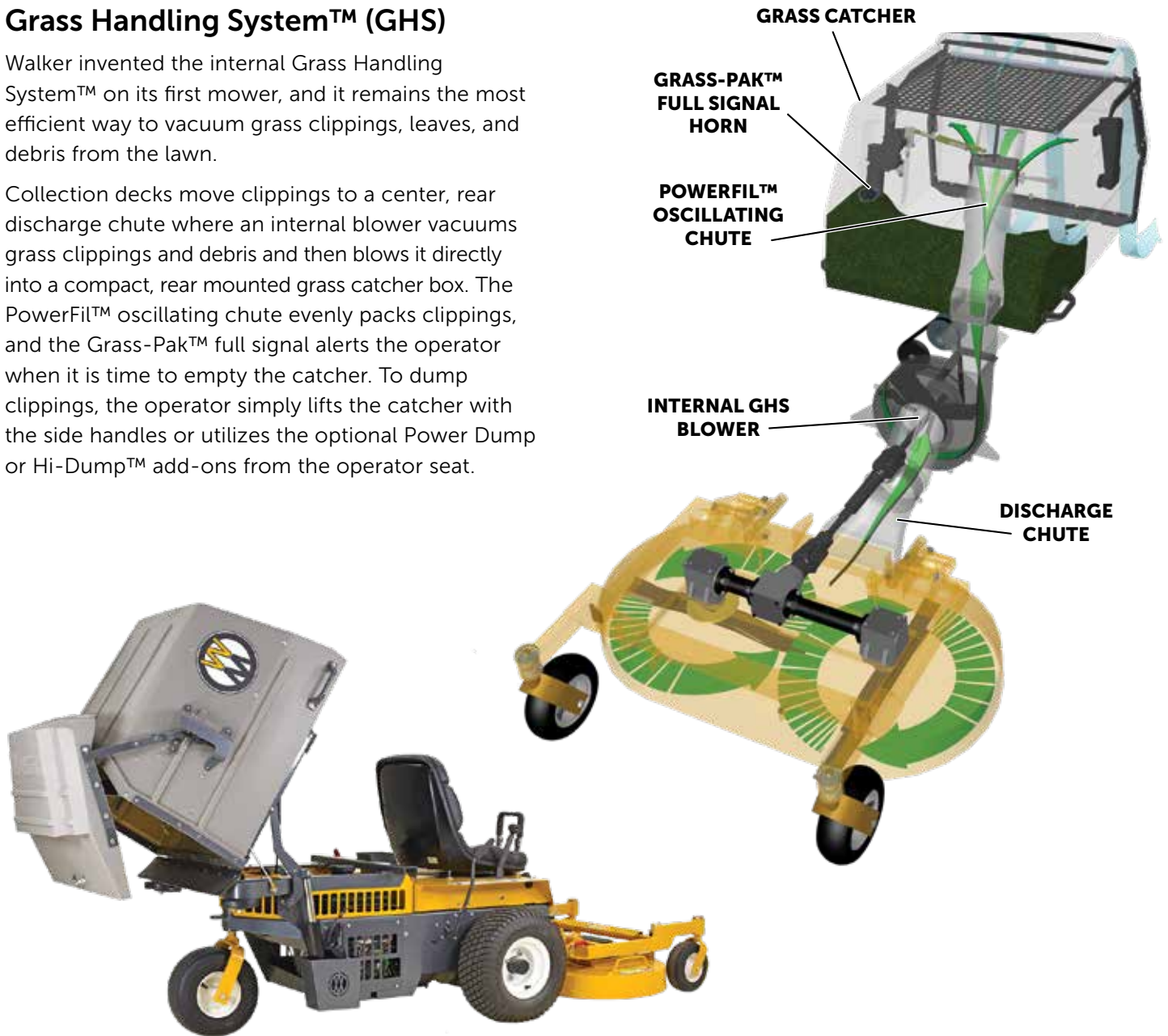
1. **Bed Contours:** Navigate contours with speed and precision.
2. **Gates:** Effortlessly pass through yard gates without wasting time switching to a different piece of equipment.
3. **Berms:** Even the smallest slopes or pitches require good traction to navigate quickly.
4. **Fence Lines:** Predictable steering allows for quick maneuverability.
5. **Tight Corners:** Tight corners and low-hanging obstacles do not slow down the compact Walker Mower.



Grass Handling System™ (GHS)

Walker invented the internal Grass Handling System™ on its first mower, and it remains the most efficient way to vacuum grass clippings, leaves, and debris from the lawn.

Collection decks move clippings to a center, rear discharge chute where an internal blower vacuums grass clippings and debris and then blows it directly into a compact, rear mounted grass catcher box. The PowerFil™ oscillating chute evenly packs clippings, and the Grass-Pak™ full signal alerts the operator when it is time to empty the catcher. To dump clippings, the operator simply lifts the catcher with the side handles or utilizes the optional Power Dump or Hi-Dump™ add-ons from the operator seat.



Pictured: S14i with optional Power Dump

Integrated Components

Walker Mowers are engineered to ensure the entire grass collection system is internal. This intentional effort has allowed Walker Mowers to retain their compact footprint. There are no bulky tubes or bags extending beyond the footprint of the mower. By positioning the GHS blower internally, a powerful vacuum action is achieved, leaving a carpet-like appearance to your lawn in spring, summer, and fall.



**INTERNAL GHS
12.5" BLOWER**



**INTERNAL GHS
10.5" BLOWER**

Interchangeable Decks and Add-ons

Whether handling grass, leaves, debris, or snow, Walker Mowers are designed for year-round productivity. On most models, decks can easily be switched for larger, smaller, collection, mulching, or discharge decks to suit the task at hand—and with dozens of add-ons, such as a dethatcher, dozer blades, snowblowers, and enclosed cabs, the Walker is one of the most versatile mowers on the market.



Tilt-Open Bodies and Tilt-Up Decks

Each Walker features a tilt-open body, quickly exposing the drive belts, electric system, engine, and drivetrain, making service and maintenance easy. No special tools or equipment are needed. Simply release the body latch and the gas spring assisted enclosure opens up for unobstructed access to all of the Walker's working components.

All Walker decks quickly tilt-up, making maintenance tasks safe and easy. It takes seconds to unlock, lift, and secure the deck in an up position, providing access to the blades, housing, and chute. H models also have an optional Power Tilt-Up™ deck lift. Walker tilt-up decks also minimize wasted space when storing the Walker Mower.



Model S

The Model S is the quintessential Walker Mower. Inspired by the original 1977 prototype, the Model S is simple and easy to operate, and very efficient at mowing residential properties. With Walker's Grass Handling System™, a patented Blower Shaft PTO™ design, and reduced weight and cost, the Model S is the perfect entry-level mower for experiencing Walker's signature beautiful cut and zero-turn productivity.



Available with two different horsepower engines, the Model S is perfect for residential lawns. The Model S features Walker's Grass Handling System™ (GHS) with a patented Blower Shaft PTO™ with a 12.75 inch GHS blower and a 7.0 bushel grass catcher. The compact design, coupled with Walker's precision steering levers and Forward Speed Control, makes getting in and out of tight landscape features and obstacles possible, minimizing hand-held trimming and walk-behind mower time.

The lightweight, balanced design improves steering agility, shortening overall job time. Integrated Hydro-Gear ZT3100 transmissions are durable and provide precise maneuverability and industry-wide service and support. The Model S is engineered for affordability and efficiency. With commercial-grade components and multiple configurable add-ons, the Model S is a serious tool for commercial operators maintaining compact, complex properties.



Pictured: S18 with a 48" collection deck

Model S Standard Features

- High capacity, commercial engine air filtration
- Precision steering system
- Forward Speed Control
- Hydro-Gear ZT3100 transmissions
- Tilt-up decks and tilt-open body
- Flexible deck carrier frame
- Grass Handling System™ (GHS)
- 12.75 inch Thru-Shaft™ PTO GHS blower
- Oscillating PowerFil™ chute with Grass-Pak™ full signal
- 7 bushel (8.7 cu. ft) grass catcher

Model S Popular Add-ons

- Power Dump
- LED Headlights
- Adjustable Footrests
- Dethatcher
- 48 inch Dozer Blade
- 36 inch Single-Stage Snowblower
- Spyker Spreader and Mount

S14i

- 14 HP Kohler Command Pro EFI engine
- Superior fuel efficiency
- 6.5 MPH ground speed
- 1.9 gallon fuel tank
- 8 compatible mowing decks: 3 collection, 3 mulching, 2 discharge

S18

- 18 HP Briggs and Stratton Vanguard engine
- Increased displacement and torque
- 7.4 MPH ground speed
- 4 gallon fuel tank
- 12 compatible mowing decks: 4 collection, 4 mulching, 4 discharge



See more details at: walker.com/model-s



Model C

The Model C is the original Walker commercial lawn mower. Since its introduction in 1986, the Model C has been continually refined and improved with the commercial operator in mind, especially those who maintain residential properties. The Model C is a compact and versatile mower with impressive productivity.



The Model C is simple, lightweight, and features components that keep it narrow and compact. Operators can quickly get in and out of places that are simply inaccessible with other mowers. Tight corners, overhanging obstacles, gates, and narrow strips of grass are no problem for the Model C.

tilt-open bodies, tilt-up decks, precision steering and handling, and Kohler Command Pro engines, make lawn maintenance with the Model C easy and enjoyable.

The Model C includes Walker's Grass Handling System™ (GHS) with a 10.5 inch high-speed blower and 7.0 bushel grass catcher with PowerFil™ oscillating chute and Grass-Pak™ full signal. The GHS system, combined with



Pictured: C19i with a 42" collection deck

Model C Standard Features

- High capacity, commercial engine air filtration
- Precision steering system
- Forward Speed Control
- Eaton Model 7 transmission with ductile cast iron gearbox final drive
- Tilt-up deck and tilt-open body
- Flexible deck carrier frame
- 4 gallon fuel tank
- Grass Handling System™ (GHS)
- 10.5 inch GHS blower
- Oscillating PowerFil™ chute with Grass-Pak™ full signal
- 7 bushel (8.7 cu. ft) grass catcher

Model C Popular Add-ons

- LED Headlights
- Comfort Seat
- Dethatcher
- Operator Soft Cab
- Implement hitch with electric ram lift
- 42 inch Two-Stage Snowblower
- Power Dump
- 48 inch Dozer Blade

C19

- 19 HP Kohler Command Pro CH620 engine
- Entry level commercial mower
- 16 compatible mowing decks: 5 collection, 5 mulching, 6 discharge

C19i

- 19 HP Kohler Command Pro ECH630 EFI engine
- Superior fuel efficiency
- 17 compatible mowing decks: 6 collection, 5 mulching, 6 discharge



See more details at: walker.com/model-c



Model T

The Model T is the standard for what commercial operators expect from a lawn mower. Intended specifically for commercial use, every aspect of the Model T has been designed to meet the most demanding expectations of operators who want fast and easy mowing with beautiful results. It is the go-to Walker for commercial operations and a favorite among discerning customers.



With two engine choices—each catering to specific commercial needs—and compatibility with virtually every Walker deck and add-on, the Model T provides unmatched versatility and year-round value.

The Model T is equipped with a large, 10 bushel (12.4 cu. ft) GHS grass catcher, allowing extended mowing time between dumping. Like every Walker, the Model T features dual, independent hydrostatic transmissions, precision steering levers, and a separate Forward Speed Control providing precise, constant forward motion.

No other mower steers like a Walker, providing agile, zero-turn mowing with fingertip control and efficiency—all with the signature clean, manicured cut of the Walker Mower.

For operators wanting a single machine that will handle the toughest property maintenance challenges, the Model T is the solution.

A non-collection version without the GHS blower and grass catcher is also available. The non-collection model features a utility dump-bed in place of the grass catcher.



Pictured: T23 with a 48" collection deck

Model T Standard Features

- Commercial air filter with remote air intake and turbine pre-cleaner
- Precision steering system
- Forward Speed Control
- Eaton Model 7 transmission with ductile cast iron gearbox final drive
- Flexible deck carrier frame
- Tilt-up deck and tilt-open body
- 4.7 gallon fuel tank
- Grass Handling System™ (GHS)
- 10.5 inch GHS blower
- Oscillating PowerFil™ chute with Grass-Pak™ full signal
- 10 bushel (12.4 cu. ft) grass catcher
- 19 compatible mowing decks: 6 collection, 6 mulching, 7 discharge

Model T Popular Add-ons

- Hi-Dump™ grass catcher system raises 67 inches with automatic catcher door actuation
- Power Dump
- LED Headlights
- Dethatcher
- Implement Hitch with electric ram lift
- 42 inch Two-Stage Snowblower
- 48 inch Dozer Blade
- Spyker Spreader and Mount

T23

- 23 HP Kohler Command Pro CH680 engine
- Commercial mower with carbureted engine
- Comfort Seat with optional armrests
- Non-collection version is available

T27i

- 27 HP Kohler Command Pro ECH740 EFI engine
- Superior fuel efficiency
- Simple, reliable operation with easy starting
- Comfort Seat with optional armrests
- Non-collection version is available



See more details at: walker.com/model-t



Model D

The Model D is an industrial-grade Walker Mower with impressive power and agility. The Model D is the only diesel-powered Walker Mower equipped with the Walker Grass Handling System™ (GHS). The Model D effortlessly handles the harshest mowing environments and extended running times without compromising on efficiency or power.



The Model D has the same footprint as the Model T, making it compact and capable of mowing both small and large properties while also boasting a transverse mounted, 3 cylinder diesel engine and liquid cooling. A self-cleaning, reversing radiator fan keeps the Model D cool and efficient even in the toughest conditions.

Weighing just under 1,200 lbs, the Model D is one of the lightest diesel-equipped commercial mowers on the market. This protects the turf from matting and rutting, while allowing the Model D to remain well-balanced

and agile. Compatible with nearly all Walker mowing decks and add-ons, the Model D is a favorite with municipalities and institutional customers.

A non-collection version without the GHS blower and grass catcher is also available. The non-collection model features a utility dump-bed in place of the grass catcher.



Pictured: D21d with a 52" collection deck

D21d

- 20.9 HP three cylinder Kubota D722 diesel engine
- Automatic glow plug preheat
- Transverse engine mount
- Liquid cooled with self-cleaning radiator
- Impressive 34 ft-lb torque
- High capacity, commercial engine air filtration
- Precision steering system
- Forward Speed Control
- Eaton Model 7 transmission with ductile cast iron gearbox final drive
- Grammer 4-way adjustable Suspension Seat
- Tilt-up deck and tilt-open body
- Flexible deck carrier frame
- High output 40-amp charging system
- Grass Handling System™ (GHS)
- 10.5 inch GHS blower
- Oscillating PowerFil™ chute with Grass-Pak™ full signal
- 10 bushel (12.4 cu. ft) grass catcher
- 19 compatible mowing decks: 6 collection, 6 mulching, 7 discharge

Model D Popular Add-ons

- Hi-Dump™ grass catcher system raises 67 inches with automatic catcher door actuation
- Power Dump
- LED Headlights
- Dethatcher
- Operator Soft Cab
- Implement Hitch with electric ram lift
- 42 inch Two-Stage Snowblower
- 48 inch Dozer Blade



See more details at: walker.com/model-d



Model R

The Model R is the perfect Walker Mower for residential properties. The belt-driven mower blades make operation smooth and quiet without compromising on the Walker Mower's distinct advantages. Fast, easy, beautiful mowing is the standard, and the Model R brings the premium Walker experience home.



The Model R has been specifically designed to meet the high standards of residential owners. It delivers essential attributes like ease of use, high quality of cut (especially on complex, difficult properties), operator comfort, reliability, and easy maintenance.

The Model R features an integrated deck design available in 42 and 48 inch cutting widths. The deck rests on independent articulating deck arms, allowing it to freely flex up and down, minimizing scalping and uncut areas of grass. The torsion-flex carrier frame also allows the

deck to flex side-to-side, so no matter the terrain, the Model R delivers a smooth premium cut. The Model R can be fitted with an optional mulching kit that includes installable baffles and serrated mulching blades. Side-mounted grass catchers can also be used with the Model R.

The Model R is priced for residential owners thanks to its simplified design and components. It is a premium Walker Mower designed to provide fast, easy, beautiful mowing for years to come.



Pictured: R21 with a 48" side discharge deck

R21

- 21 HP Kohler KT620 with Smart-Choke™ technology for easy starts in hot and cold weather
- Hydro-Gear EZT transmissions
- Electric blade clutch with easy pull/push switch operation
- Tilt-up deck and tilt-open body
- 3.0 gallon custom molded, low profile fuel tank with integrated fuel level gauge
- Flexible deck carrier frame
- Precision steering system
- Forward Speed Control

Model R Popular Add-ons

- Comfort Seat
- Tow Hitch
- Mulching Kit including bolt-in baffles and serrated mulching blades
- Accelerator™ side-mount grass catcher
- LED Light Kit

With S42 deck

- 42 inch cutting width
- Belt-driven blades with dampened tensioners for smooth, quiet operation
- Custom blade spindles with grease zerk and bleed valve

With S48 deck

- 48 inch cutting width
- Belt-driven blades with dampened tensioners for smooth, quiet operation
- Custom blade spindles with grease zerk and bleed valve

2 YEAR
300 HRS

The Model R features a 3-year, 300 hour, caster-to-caster residential warranty. All parts and components are covered against manufacturer defect.



See more details at: walker.com/model-r



Model B

The Model B is compact and fast. It is a Walker Mower designed to run side discharge and mulch decks on difficult properties with hills, uneven terrain, and obstacles, while leaving a beautiful cut. With four different models to choose from, the Model B is configurable and versatile to meet the professionals' expectations.



Like no other mower in the mid-size, zero-turn class, the Model B is productive and compact. The Model B possesses the distinct Walker characteristics of being agile, versatile, and easily maintainable while delivering the Walker beautiful cut. The Model B is light on the turf, which not only protects against rutting and other property damage, but also improves efficiency by reducing loss of motion and giving quick maneuverability. With a low center of gravity and balanced design, the Model B is agile and demonstrates impressive hillside performance, allowing operators to mow more places with a single machine.

With interchangeable decks, attachments, and add-ons like LED headlights and a utility bed, the Model B is a productive and versatile year-round machine. Available in four unique configurations with a variety of power options, there is a Model B suitable for any situation.



Pictured: B23i with a 48" mulching deck

Model B Standard Features

- High capacity, commercial engine air filtration
- Precision steering system
- Forward Speed Control
- Hydro-Gear ZT3100 transmissions
- Flexible deck carrier frame
- Tilt-up deck and tilt-open body

Model B Popular Add-ons

- Utility Bed
- LED Headlights
- Comfort Seat for B18 and B19
- Suspension Seat for B23i and B27i
- Dethatcher
- 48 inch Dozer Blade
- 36 inch single-stage Snowblower
- Spyker Spreader and Mount

B18

- 18 HP Briggs & Stratton Vanguard V-Twin engine
- 4 gallon fuel tank
- 8 compatible decks: 4 mulching, 4 discharge

B19

- 19 HP Kohler Command Pro CH620 engine
- 4 gallon fuel tank
- 11 compatible decks: 5 mulching, 6 discharge

B23i

- 23 HP Kohler Command Pro ECH730 EFI engine
- Superior fuel efficiency
- Comfort Seat
- 4.7 gallon fuel tank
- 13 compatible decks: 6 mulching, 7 discharge

B27i

- 27 HP Kohler Command Pro ECH740 EFI engine
- Superior fuel efficiency and economy
- Integrated electric blade clutch and brake
- Comfort Seat
- 4.7 gallon fuel tank
- 13 compatible decks: 6 mulching, 7 discharge



See more details at: walker.com/model-b



Model H

The Walker Model H stands alone in its class for high production mowing and improved return on investment. When fast, beautiful results are demanded on vastly different properties, turf types, and conditions, the Model H delivers for the most discerning operators. A variety of attachments and add-ons keep the Model H productive year-round with excellent results.



The Model H is a high capacity machine that offers three engine options and efficient machine design for overall fuel, time, and operating cost savings.

With large 23 inch drive tires, Hydro-Gear ZT3400 transmissions, and Walker's precise steering system with Forward Speed Control, the Model H is fast and maneuverable, with easy operation. Three Model H-specific decks feature an integrated deck height

adjuster providing cutting height up to 5 inches and offering standard Tilt-Up functionality. Also, an optional Power Tilt-Up™ deck lift is available for ease of maintenance, storage, and operation. The Model H features 9.4 gallons of total fuel capacity, a standard Grammer Suspension Seat, dual spread tailwheels with Walker's puncture-resistant caster tires, and adjustable footrests. Operators can mow all day in comfort, even in rough mowing terrain.



Pictured: H37i and H24d all with a 64" rear discharge deck

Model H Standard Features

- Grammer 4-way adjustable Suspension Seat
- High capacity, commercial engine air filtration
- Precision steering system
- Forward Speed Control
- Hydro-Gear ZT3400 transmissions
- 3 Model H-specific mowing decks with integrated Deck Height Adjuster and Adjustable Foot Rest
- Flexible deck carrier frame
- Tilt-up deck and tilt-open body
- 9.4 gallon fuel capacity, dual tanks with selector valve

Model H Popular Add-ons

- Power Tilt-Up™ deck lift
- Operator Hard Cab
- LED Headlights
- Deck arm adapter kit, allowing compatibility with 6 additional Walker mowing decks
- Implement hitch with electric ram lift
- 50 inch two-stage Snowblower
- 60 inch Rotary Broom
- 60 inch Dozer Blade

H27i

- 26.5 HP Kohler Command Pro ECH749 EFI engine
- Superior fuel efficiency
- Lightest weight Model H, minimizing tire marks and turf damage

H37i

- 37 HP Briggs and Stratton Vanguard Delphi fuel injected engine
- Superior fuel efficiency
- High output 50-amp charging system

H24d

- 23.4 HP Kohler KDW1003 diesel engine
- Automatic glow plug preheat
- Rubber isolation engine mounts
- Liquid cooled with self-cleaning radiator
- Standard ROPS and Utility Bed



See more details at: walker.com/model-h



Decks

Each Walker Deck is uniquely configured to meet a very specific performance niche. Whether the most important consideration in looking for the perfect deck is cutting width, handling grass clippings, material capacity, or grass type, there is a Walker deck that will meet the specific maintenance need.



Collection Decks

Collection decks are compatible with Walker Grass Handling (GHS) models S, C, T, and D. Clippings are discharged from the deck through the internal blower and discharge chute, and stored in the GHS catcher.



C36R
36 inch
Reverse Rotation



C42
42 inch
Standard Rotation



C42R
42 inch
Reverse Rotation



C48
48 inch
Standard Rotation



C48R
48 inch
Reverse Rotation



C52R
52 inch
Reverse Rotation

Standard vs Reverse Rotation

Standard rotation blades come together at the front of the deck, moving material directly into the rear discharge chute. Standard rotation decks are ideal for users who need to collect thick, heavy clippings, including leaves and other yard debris.

Reverse rotation blades come together at the rear of the deck, moving material around the edges of the deck before it is channeled into the discharge chute. The simplified design of reverse rotation decks provides exceptional cut quality, especially in the blade overlap area in the middle.

Side Discharge Decks

Compatible with all Walker Mowers, side discharge decks cleanly and evenly discharge cut grass from under the deck housing.



S36
36 inch
Gear Drive



S42
42 inch
Gear Drive



S42-R/S48-R
42/48 inch
Belt Drive (Model R only)



S48
48 inch
Gear Drive



S52
52 inch
Belt Drive



S56
56 inch
Gear Drive



S61
61 inch
Belt Drive (Model H only)



S62
62 inch
Belt Drive



S74
74 inch
Gear Drive

Gear vs Belt Drive

Walker gear-driven decks utilize aluminum or cast iron gearboxes with bevel Zerol gear technology for durable and quiet function. The timed blades provide exceptional cut quality and striping, and allow a compact design for improved trimming and maneuverability.

Walker belt-driven decks use a robust spindle and belt-tensioning idler design, and are best suited for rougher mowing conditions with debris or ground contact occurring. Walker belt-driven decks feature tool-free belt change and easy-to-maintain spindles and components.

Rear Discharge Decks

Designed specifically for Model H mowers with high production and fast mowing speeds, Walker rear discharge decks process clippings numerous times before cleanly and evenly discharging clippings out the back of the deck, leaving an evenly mulched turf.



R52
52 inch (Model H only)



R64
64 inch (Model H only)

Mulching Decks

Mulching decks are designed to efficiently re-cut material to fine particles and return them to the turf leaving a beautiful cut.



M36
36 inch



M42
42 inch



M42B
42 inch



S42-R/S48-R Kit
42/48 inch (Model R only)



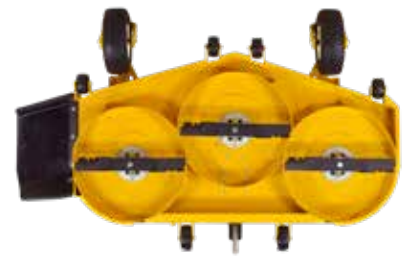
M48
48 inch



M52
52 inch



S52 Kit
52 inch
(Mulch Kit for S52)



S61 Kit
61 inch
(Mulch Kit for S61)

Available Deck Add-ons*

- Dethatcher attachment
- Boom Sprayer attachment
- Pneumatic deck tires
- Deck Height Adjuster
- Adjustable footrests
- Spyker Spreader and Mount
- Deck Cuff kit
- Break Away blades
- Curb Jumper
- Power Tilt-Up™ deck lift for S61, R52, R64 decks

*Visit walker.com for deck add-on compatibility.

Deck Compatibility

Collection Decks

	S	C	T	D	R	B	H
C36R	●	●	●	●			
C42/R	●	●	●	●			
C48/R	■	●	●	●			
C52R		◆	●	●			

■ Model S18 only, C48R deck only. ◆ Model C19i only.

Discharge Decks

	S	C	T	D	R	B	H
S36	●	●	●	●		●	
S42	●	●	●	●		●	
S42-R					●		
S48-R					●		
S48	■	●	●	●		●	▲
S52		●	●	●		^	▲
R52							●
R64							●
S56	■	●	●	●		●	▲
S61							●
S62		●	●	●		^	▲
S74			●	●		#	▲

^ B19, B23i, and B27i can use S52 and S62. # B23i and B27i can use S74. ▲ Requires Deck Arm Adapter Kit P/N 2430-10. ■ Model S18 only.

Mulching Decks

	S	C	T	D	R	B	H
M36	●	●	●	●		●	
M42	●	●	●	●		●	
M42B	●	●	●	●		●	
S42-R Kit					●		
S48-R Kit					●		
M48	■	●	●	●		●	▲
M52			●	●		#	
S52 Kit		●	●	●		^	▲
S61 Kit							●

▲ Requires Deck Arm Adapter Kit P/N 2430-10. # B23i and B27i can use M52. ^ B19, B23i, and B27i can use S52 w/ Mulch Kit. ■ Model S18 only.



Add-ons: Implements



Implement Hitch

Implements mount interchangeably on most Walker models using the quick-change hitch system. The Implement Hitch replaces the mower deck and installs on the tractor in just a few minutes. Implements then slide onto the hitch and lock in place with the flip of a lever for true “quick-change” capability.

The Hitch assembly includes operator footrests and an electric power lift. A switch raises and lowers implements and is quadrant mounted on the Forward Speed Control lever for convenient operation.

Models C, T, D..... P/N H10

Model H P/N H19

Option: Tail Weights

Tail weights are used for counter balancing many Walker front-mounted add-ons such as a snowblower, loader bucket, or rotary broom. Tail weights also improve handling when using large decks on our lighter models. The cast-iron weights bolt directly to the chassis frame or the split axle tail.

Model B: 10 lb P/N 2647-3

Model H: 50 lb P/N 2647-10

Model H: 55 lb..... P/N 2647-11

Extra 55 lb weight P/N 2647-6

Model C, T, D: 85 lb..... P/N 7647

Extra 10 lb weight..... P/N 7647-5



Rotary Broom

The Rotary Broom, with a 47" or 60" sweeping path and five-position angle head is ideal for sweeping debris or light snow from hard surfaces.

The Rotary Broom excels at sweeping and removing gravel and debris from turf areas along roads, paths, and playing fields, and can also be used for lawn dethatching and raking. Down pressure is spring counter-weighted and is adjustable for great sweeping action and minimum brush wear. The Rotary Broom is another way to extend the usability of the Walker commercial riding lawn mower. Requires Implement Hitch (see page 25).

Models C, T, D: 47"P/N H13

Model H: 60"P/N H20

Optional Gauge Wheels are available to better control depth of brush engagement. Especially useful when working on turf. **P/N I399**





Dozer Blade (48" or 60")

The Dozer Blade is a powerful tool able to tackle a variety of tasks, from cleaning up after a snow storm to backfilling irrigation trenches. It is designed and built by Walker using the latest fabrication technology, precision tooling, and quality workmanship.

Blade design features a simple foot-actuated angle adjust mechanism that allows the operator to quickly set the blade to 5 different positions and also employs trip-over protection with adjustable preload. The steel cutting edge is replaceable, with four mounting positions for extended life.

Requires Implement Hitch (see page 25).

Models C, T, D, H: 48" P/N H11
Models T, D, H: 60" P/N H16

An optional Polyurethane Wear Strip Kit is available for use on sensitive surfaces:
48" P/N 6625-10
60" P/N 6625-11



Loader Bucket

A versatile tool for landscaping work, the Loader Bucket will push, scoop, haul and grade dirt, stone, gravel, and mulch. It lifts approximately 180 lb (82kg) and holds 2.25 cu. ft (64 liter) of material, and features 14" ground clearance for transport. The Loader Bucket has a high-strength steel cutting edge with tilting action, and is powered by a 500-lb electric ram, and is available for use on models C, T, and D. Requires Implement Hitch (see page 25). **P/N H18**



Debris Blower

Useful for landscape clean-up and leaf removal, the Debris Blower quickly mounts to the implement hitch and gives the Walker Mower owner full three-season use.

The 13-1/2" Debris Blower delivers 125-MPH velocity and a 230° manual directional control. The same high-quality construction found in each of our commercial mowers is built into this and each implement we offer. Requires Implement Hitch (see page 25). **P/N H14**



Two-Stage Snowblower (42" or 50")

This powerful add-on throws snow up to 40 feet with a directional discharge spout that can be adjusted 180 degrees from the operator seat. The chute pitch adjustment allows for fine control of throw angle and distance and comes with an optional electric control kit. With the electric height adjustment of the Implement Hitch, the Snowblower will make quick work of even the deepest of snowfalls. Requires Implement Hitch (see page 25).

Models C, D, T, H: 42" P/N H12

Model H: 50" P/N H17

**Optional Chute Control Kit:
P/N 6623-4**

Add-ons: Attachments



Hard Cab

Shields operator from winter weather when using a Snowblower, Rotary Broom or Dozer Blade. Includes two hinged doors, glass windshield with electric windshield wiper, LED headlights, and circulation fan. Requires ROPS kit for mounting (see page 30).

Model H: P/N A33

**Optional Operator Cab Heater:
(Use only with H37i) P/N 2200-24**

Soft Cab

The Soft Cab shields operator from winter weather when using a Snowblower, Rotary Broom or Dozer Blade. Features a hinged door with glass windshield, electric windshield wiper, and LED Headlights.

Model C: P/N A13

Models D21d, T23, T25i: P/N A14

**Front Cab Extension Flap:
Protects operator when using
Dozer Blade P/N 7661-4**



ROPS

The Walker Roll-Over Protection Structure (ROPS) consists of a high strength steel roll bar and retracting inertial reel seat belt. The ROPS system features a hinged roll bar that can be folded down for convenient transport and storage.

Models H27i, H24d..... P/N A30

Model H37i..... P/N A34

Models C, D, T..... P/N A37



Single-Stage Snowblower 36"

Just the right size for tackling sidewalks and driveways, the 36" Single-Stage Snowblower attachment mounts directly in place of the mower deck in just a few minutes. A simple manual lifting mechanism and footrests are integrated with the Snowblower mount. No separate implement hitch required. The Snowblower is compatible with models S, C, T, D, and B. The Snowblower is the perfect winter season add-on to give the Walker year-round versatility. It is a compact, powerful addition to the Walker Mower, throwing snow up to 20 feet. **P/N A11**



Spyker Spreader Attachment

The Spyker Spreader Attachment combines a Spyker S80-12010 Pro-Series Spreader with the versatile Walker Mower. No tools are needed to secure the spreader to the carrier frame of the Walker 42 inch, 48 inch, or 52 inch gear-driven decks.

Spyker Spreader and Mount..... P/N A39

Spyker Spreader Mount only..... P/N A38



Dethatcher

The Dethatcher on the front of the Walker Mower is the ideal setup to quickly dethatch and mow a property. When used with the Grass Handling System on models S, C, T, and D, lawn thatch and debris are lifted, vacuumed, and collected in one pass. The Dethatcher features front gauge wheels which allow the dethatching tines to maintain consistent depth on uneven or articulating properties.

The Dethatcher quickly attaches to the front of 36", 42", 48" and 52" Walker gear-driven decks with integrated adjustable mounting saddles. A lift lever with foot trigger lowers and raises the Dethatcher for easy transport when driving between lawn areas. Gauge wheels are adjustable to set and tune tine depth. The foldable handle allows the Dethatcher to be stored vertically against a shop wall or tied down against a trailer side-wall. **P/N A10**

Optional Wall Mount:

Securely and compactly mount the Dethatcher off the floor in a space saving manner on your shop or garage wall. **P/N 6606-11**



Boom Sprayer

A helpful attachment for property maintenance, the Boom Sprayer easily mounts to all 42", 48", 52", 56", and 62" Walker decks and offers a 96" spray pattern, allowing operators to apply fertilizer or weed control in an efficient manner.

A spray gun with a 20-foot hose allows the operator to leave the mower and apply liquid material to all landscape features. The spray tip adjusts to offer varying output from a mist to a 35-foot stream. The 25-gallon tank allows easy cleaning of the tank and spray system. **P/N A16**



48" Dozer Blade

Developed to provide a durable, simple, and productive attachment for the Walker, the Dozer Blade incorporates a manual lifting mechanism not requiring an implement hitch. The Dozer Blade features a foot-actuated, angle-adjust mechanism that allows the operator to quickly set the blade to five different angles. The blade employs trip-over protection with adjustable preload to allow operators to focus on productivity, and not on what is hiding under the snow. A replaceable steel wear strip comes standard, and an optional polyurethane wear strip is also available. **P/N A32**

Adapter kits are required for using the A32 Dozer Blade:

Models B, S..... **P/N 4300-16**

Models C, T, D..... **P/N 5628-10**

Options are available for the A32 Dozer Blade:

Polyurethane Wear Strip Kit 48" P/N 6625-10

Blade Attachment Power Lift Kit P/N 6622-17



Add-ons: Options



Comfort Seat

The Comfort Seat (shown left) is custom-designed has improved seat bolstering and back profile for increased posture and support. The base cushion features Elastometric Vibration Control which greatly increases comfort during operation.

The Comfort Seat cover is made of marine grade, UV resistant industrial vinyl and features impermeable contrasting yellow stitching and subdued Walker branding embroidered on the seat back. The wear-resistant seat cover is easily replaceable. Matching armrests are available as an optional upgrade. The comfort seat comes standard on T23, T27i, B23i, and B27i.

Models T, D.....	P/N 6104-8
Models B, S, C	P/N 6104-9
Model R.....	P/N 6104-10
Optional Armrests.....	P/N 6104-6

Suspension Seat

Made by Grammer, this full-spring Suspension Seat includes dampening and adjustments for back angle, lumbar support and operator weight. Armrests are standard on the Suspension Seat. Standard on models D21d and H24d.

Model B.....	P/N 4103-1
Model C.....	P/N 6103-43
Model T.....	P/N 6103-46
Models D, H.....	P/N 6103-14



Armrests

Foldable armrests can be added to the Comfort or Standard Seat. They offer enhanced operator comfort and security. Armrests conveniently fold up when not in use. Armrests are standard equipment on the Suspension Seat.

Standard Seat.....	P/N 5885
Comfort Seat.....	P/N 6104-6

Utility Bed

The Utility Bed can replace the rear body assembly on the Model B providing convenient storage and transport of material or tools. With manual dump functionality, the Utility Bed also adds all season versatility to the Model B or H24d. Standard on Models H24d, and the non-collection versions of T23 and D21d. **P/N 4650-10**



Headlights

The LED Headlights incorporate a durable, cast aluminum housing with five LED lamps in each light assembly. The lights are positioned to illuminate the front and sides of the mower deck, providing increased situational awareness and safety for both the operator and bystanders.

- Models B, C, H27i, H24d P/N 5989-13**
- Model S P/N 5989-14**
- Model R P/N 5989-15**
- Models D, T P/N 7989-14**
- Model H37i P/N 2989-12**

Cup Holder

Featuring a unique front-mount design, the Cup Holder gives the operator easy access to his or her drink. The Cup Holder frame is powder-coated metal and incorporates rubber tabs to secure different sized and shaped cups and tumblers up to 3.25 inches in diameter. Not Model R compatible. **P/N 5744-9**



Instrument Panel Cover

This sturdy canvas Instrument Panel Cover protects the instrument panel on Walker Models D and T when parked outside or trailered in rain or snow. **P/N 7307-2**





Power Dump

The Walker Power Dump provides convenience and time savings to commercial mowing companies and homeowners alike by giving the operator the ability to dump the grass catcher from the operator seat. A toggle switch operates the 12-volt electric linear actuator that provides the dumping and door-opening action, which completes in about 10 seconds.

- Model S14i.....P/N 7620-17**
- Model S18.....P/N 7620-18**
- Model C.....P/N 7620-14**
- Models T, D.....P/N 8620-2**



Hi-Dump®

The Walker Hi-Dump® raises up 67 inches and dumps collected grass and debris into a truck or trailer in a 20-second cycle without the operator ever needing to leave the seat. Powered by a 12-volt electric/hydraulic system, the lifting and dumping functions work independently and are controlled by two toggle switches near the operator's seat. Available for Models D and T. **P/N A21**

Large Hole Screen

When mowing in wet conditions, this screen with 3/4" holes stays cleaner to help prevent clogging. This screen easily interchanges with the standard screen.

7.0 bu. Catcher:
P/N 7512-7
10.0 bu. Catcher:
P/N 7512-11



No-Catch Deflector

The No-Catch Deflector easily installs in the grass catcher door frame to allow "non-collection" rear discharge mowing with GHS models. Grass clippings are safely deflected downward and spread across the door opening.

7.0 bu. Catcher:
P/N 7500-2
10.0 bu. Catcher:
P/N 8500-2



GHS Blower Lockout

The Blower Lockout disengages the grass handling system blower to reduce noise and increase power when using a side discharge deck, mulching deck or PTO-driven attachment or implement. Disengaging the blower also prevents grass, snow, or debris from entering the grass catcher. **P/N 7541-1**



Dump Bag

The reusable, fabric Dump Bag helps make on-the-job cleanup a lot easier. It is sized to fit the grass catcher door opening allowing the operator to cleanly handle clippings and easily transport them.

9.5 bu. Catcher:
P/N 5598
10.0 bu. Catcher:
P/N 5598-2



Dump Bins

These two bins slide into the Walker 10-bushel catcher, making the dumping of grass clippings much easier by dividing the clippings in half. This is especially useful for single operators working by themselves.

Set of Dump Bins.....P/N 8510-11
Left Side Dump BinP/N 8510-9
Right Side Dump Bin.....P/N 8510-10





Deck Height Adjuster

The mechanical Deck Height Adjuster installs directly onto the Walker mowing deck. It offers quick and easy cutting height adjustments in 1/4 inch increments, using a single hand lever within reach of the operator's seat.

C36R, S36, M36	P/N A22
C42, S42, M42	P/N A23
C48, S48, M42B, M48	P/N A24
C48R, C52R	P/N A25
S52*	P/N A26
S62**	P/N A27
S56	P/N A28
C42R	P/N A29

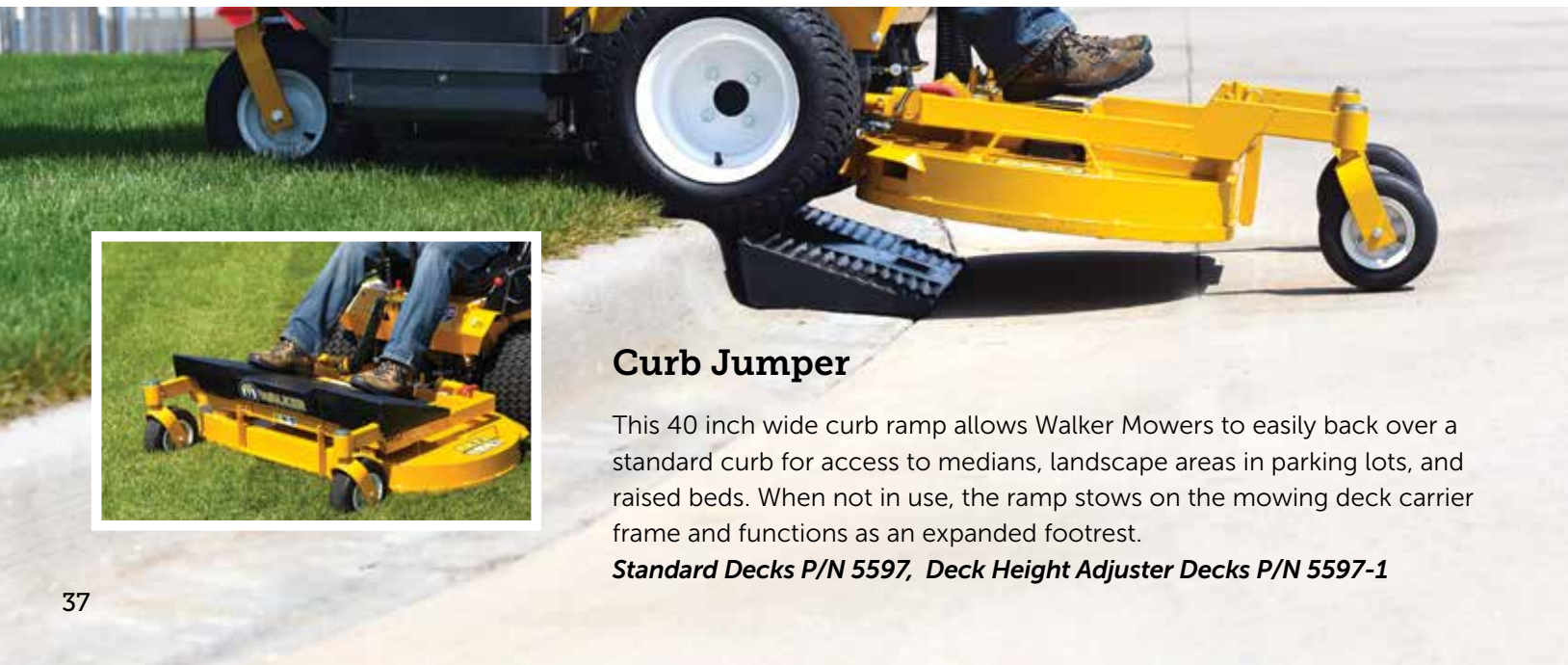
**A26 SN 163318 and prior S52 decks.*

***A27 SN 187999 and prior S62 decks.*

Deck Height Washers

Deck Height Washers allow finer adjustments of cutting height on compatible decks. Use these to adjust deck height by 1/4 inch.

36", 42", 48", 52", and 56" gear drive decks.....P/N 5727-1
52", 62" belt drive, 74" gear drive decks.....P/N 8727



Curb Jumper

This 40 inch wide curb ramp allows Walker Mowers to easily back over a standard curb for access to medians, landscape areas in parking lots, and raised beds. When not in use, the ramp stows on the mowing deck carrier frame and functions as an expanded footrest.

Standard Decks P/N 5597, Deck Height Adjuster Decks P/N 5597-1

Power Tilt-Up®

Available for the Model H, the Power Tilt-Up® makes it easy to automatically tilt up decks for maintenance, transportation and storage. Tilt-up action uses a 12-volt electric linear actuator easily mounted to any Model H mower equipped with an S61, R52, or R64 deck with adjustable footrests. The use of a tailweight is suggested, see page 25.

Models H27i, H37i P/N A35

Model H24d..... P/N A36



Deck Lift

The manual Deck Lift raises the front casters of the mowing deck a few inches off the ground to avoid wear and tear on the deck when using low cutting heights. The Deck Lift mounts directly to an existing Walker tractor and deck.

Model B..... P/N 4645

Models C, T, D..... P/N 8645

Break Away Blades

Use Break Away Blades in mowing conditions with frequent ground contact and/or excessive debris. Break Away Blades lessen the impact and shock loading on the deck drive train and reduce blade damage. Cutting blades can be easily replaced or removed for sharpening.

S56.....P/N 5705-32

S42.....P/N 5705-33

S74.....P/N 5705-34

S48.....P/N 7705-8



Adjustable Footrests

These Adjustable Footrests clamp onto the carrier frame. They are easy to install and adjust, making for a comfortable ride for operators with shorter legs.

36", 42", 48", 52" P/N 8662-10

S74..... P/N 8662-9





Deck Cuff

Airflow and deck contour tend to push grass at the very edges of the deck away from the cutting blades. The Deck Cuff acts as a channel to direct grass at the edge of the deck into the blade cutting path, restoring full deck cutting width.

- C36** **P/N 7704-2**
- C48, C48R** **P/N 7704-4**
- C52** **P/N 7704-5**

Spread Axle Tail Wheel

The Spread Axle Tail Wheels track in line with the drive tires for grass conditions where the center tail wheel track may not be preferred. This offers a clean look to the striping, improves straight tracking, and also contributes to stability when operating on hillsides.

- Spread Axle Assembly**..... **P/N 7420-3**
- Model D Tank Relocation Kit**..... **P/N 7420-8**



Dual Tail Wheel

The Dual Tail Wheel comes standard on models T and D. Featuring two independent pneumatic tires, it offers less turning resistance than the Single Wide Tail Wheel, offering mowing with greater agility and precision. **P/N 7420-20**

Single Wide Tail Wheel

The Single Wide Tail Wheel creates a single, uniform tire stripe in the middle of the cutting width for a clean-looking stripe pattern. Not recommended for delicate turf, D Models, or machines equipped with a Hi-Dump® due to the increased turning friction at the contact patch of the tail wheel. **P/N 8045-10**





Tail Wheel Lock

The Tail Wheel Lock uses a locking solenoid and detent to hold the tail wheel into a "straight ahead" position. This dramatically improves the ability to create straight stripes and stability for hillside mowing. An On/Off toggle switch located on the Forward Speed Control makes it easy to control from the operator seat. **P/N 8540**

18 x 7-8 Turf Tire

The 18 x 7-8 Turf Tire is ideal for use with narrow decks, attachments, or implements. With these tires, the overall width of the tractor stays within the cut width of Walker's 36 inch decks. These tires come standard on the Model S14i. **P/N 5033-6**



18 x 7-8 Directional AT Tire

The 18 x 7-8 AT Tire features a high-traction, directional tread. It is ideal for increased traction in a variety of situations such as snow removal, dirt work, and mowing where a narrow, aggressive tire is needed. It is perfectly paired with the 36 inch Single-Stage Snowblower, the 48 inch Dozer Blade, or 36 and 42 inch decks.

Left Drive Tire: P/N 5034-1

Right Drive Tire: P/N 5034-2



18 x 8.5-10 Turf Tire

The 18 x 8.5-10 Turf Tire features a low profile sidewall for increased stability on slopes and less sidewall flex in turns. The 18 x 8.5-10 Turf tire keeps overall tractor width less than 42 inches, ideal for narrower decks, attachments, or implements. This tire is standard on Models B, C, S18, and Models T and D with ROPS. **P/N 5075-3**



18 x 8.5-10 AT Tire

These aggressive 18 x 8.5-10 high-traction tires feature increased traction useful for snow removal, dirt work, and other challenging mowing conditions. The tire width maximizes deck overhang for improved trimming capability, as well as dozer blade overhang to increase blade side reach. *P/N 8070-9*



18 x 9.5-8 Turf Tire

The 18 x 9.5-8 Turf Tire is a good balance of low ground pressure, operator comfort, and deck overhang for trimming ability. It is the standard tire on Model T and Model D Walker Mowers without ROPS. *P/N 7070-2*



18 x 10.5-10 Turf Tire

The 18 x 10.5-10 Turf Tire provides optimum traction and a large contact area, reducing ground pressure and protecting the turf. The low profile sidewall improves hillside handling. Due to its width, and for optional trimming, it should be paired with 48 inch or larger decks. *P/N 8075-4*



18 x 11-10 AT Tire

The 18 x 11-10 All Terrain Tire is ideal for increased traction in a variety of situations ranging from hillside mowing to snow removal. It also features a low profile sidewall for increased stability and performance. *P/N 8070-6*



22 x 10.5-12 Turf Tire

The 22 x 10.5-12 Turf Tire provides optimum traction while minimizing turf damage in normal mowing conditions for the Model H. *P/N 2071*



23 x 10.5-12 AT Tire

The 23 x 10.5-12 All-Trail Tire features a moderately aggressive, bi-directional tread pattern ideal for challenging turf applications. The All-Trail tire improves traction and hillside performance for the Model H. **P/N 2071-2**



23 x 10.5-12 Directional AT Tire

The 23 x 10.5-12 Directional All-Terrain Tire provides improved traction for the Model H and is ideal for snow, dirt, and challenging mowing and implement conditions. The Directional AT tread layout is open enough to shed snow and mud, yet the tire rolls smoothly and performs well on manicured turf.

Left Tire: P/N 2070-5, Right Tire: P/N 2070-6



Pneumatic Deck Tire

For operators who like the ability to fine-tune the performance and ride of their Walker Deck, we offer a pneumatic tire option. The Pneumatic Deck Tires replace the standard semi-pneumatic tires and allow for adjustment of air pressure.

Tire and inner tube only: P/N 5715-15

Tire, inner tube, and wheel assembly: P/N 5715-17



Semi-Pneumatic Deck Tire

Never again experience the downtime of having a flat deck tire. The Semi-Pneumatic Deck Tires are molded, structural rubber with a hollow core and come standard on most Walker Decks.

Tire, wheel and axle assembly: P/N 5715-22

Tire only: P/N 5715-16



Tire Chains

The Tire Chains are used for extra traction while working in snow with a Walker Snowblower, Rotary Broom or Dozer Blade. There are tire chains to fit every Walker model.

18 x 6.5-8..... P/N 5675

18 x 9.5-8..... P/N 5675-3

18 x 8.5-8..... P/N 5675-2

22x10.5-12..... P/N 5675-6



Add-on Compatibility

Implements	S	C	T	D	R	B	H
Implement Hitch ¹		•	•	•			•
47" Rotary Broom		•	•	•			
60" Rotary Broom							•
48" Dozer Blade		•	•	•			•
60" Dozer Blade			•	•			•
Loader Bucket		•	•	•			
Debris Blower		•	•	•			
42" Two-Stage Snow Blower		•	•	•			
50" Two-Stage Snow Blower							•

Attachments	S	C	T	D	R	B	H
Operator Soft Cab		•	•	•			
Operator Hard Cab							•
ROPS		•	•	•			•
36" Single Stage Snow Blower	•	•	•	•		•	
Dethatcher ²	•	•	•	•		•	
Boom Sprayer ²	•	•	•	•		•	•
48" Dozer Blade	•	•	•	•		•	
Spyker Spreader and Mount	•	•	•	•		•	

Options	S	C	T	D	R	B	H
Comfort Seat	•	•	•	•	•	•	
Suspension Seat		•	•	•		•	•
Armrests	•	•	•	•	•	•	•
Utility Bed			•	•		•	
Headlights	•	•	•	•	•	•	•
Cup Holder	•	•	•	•		•	•
Instrument Panel Cover			•	•			
Tail Weights		•	•	•		•	•
Power Dump	•	•	•	•			

Options (continued)	S	C	T	D	R	B	H
Hi-Dump®			•	•			
Large Hole Screen	•	•	•	•			
No-Catch Deflector	•	•	•	•			
GHS Blower Lockout		•	•	•			
Dump Bag	•	•	•	•			
Dump Bins			•	•			
Deck Height Adjuster ²	•	•	•	•		•	•
Deck Height Washers ²	•	•	•	•		•	•
Curb Jumper ²	•	•	•	•		•	•
Power Tilt-Up®							•
Deck Lift	•	•	•	•		•	•
Break Away Blades ²	•	•	•	•		•	
Adjustable Footrests ²	•	•	•	•		•	•
Deck Cuff ²	•	•	•	•			
Spread Axle Tail Wheel		•	•	•			
Dual Tail Wheel			•	•			
Single Wide Tail Wheel			•	•			
Tail Wheel Lock			•	•			
18 x 7-8 Turf Tire	•	•	•	•	•	•	
18 x 7-8 Directional AT Tire	•	•	•	•	•	•	
18 x 8.5-10 Turf Tire	•	•	•	•	•	•	
18 x 8.5-10 AT Tire	•	•	•	•	•	•	
18 x 9.5-8 Turf Tire	•	•	•	•	•	•	
18 x 10.5-10 Turf Tire		•	•	•		•	
18 x 11-10 AT Tire		•	•	•		•	
22 x 10.5-12 Turf Tire							•
23 x 10.5-12 AT Tire							•
23 x 10.5-12 Directional AT Tire							•
Pneumatic Deck Tire ²	•	•	•	•		•	•
Semi-Pneumatic Deck Tire ²	•	•	•	•		•	
Tire Chains ³	•	•	•	•	•	•	•

¹ Required for use of compatible implements. ² Visit walker.com for a full list of compatible decks. ³ Visit walker.com for a full list of compatible tires.

Walker Mower Specifications

	S14i	S18	C19	C19i	T23	T27i	D21d	R21	B18	B19	B23i	B27i	H24d	H27i	H37i
Engine	Kohler ECH440	B&S Vanguard	Kohler CH620	Kohler ECH630	Kohler CH680	Kohler ECH740	Kubota D722	Kohler KT620	B&S Vanguard	Kohler CH620	Kohler ECH730	Kohler ECH749	Kohler KDWH1003	Kohler ECH749	B&S Vanguard
Fuel System	EFI	Carb	Carb	EFI	Carb	EFI	Diesel	Carb	Carb	Carb	EFI	EFI	Diesel	EFI	EFI
Cooling System	Air	Air	Air	Air	Air	Air	Liquid	Air	Air	Air	Air	Air	Liquid	Air	Air
Displacement (cc)	429	570	674	694	674	747	719	660	570	674	747	747	1028	747	993
HP @ 3600 RPM	14	18	19	19	22.5	27	20.9	21	18	19	23	27	23.7	26.5	37
Max Torque (ft-lbs)	22.7	29.2	35	34.2	37.9	38.8	34	35.9	29.5	35	38.1	40	36.8	40	53
Fuel Capacity US Gal (Liter)	1.9 (7.2)	4 (15.1)	4 (15.1)	4 (15.1)	4.7 (17.8)	4.7 (17.8)	4.7 (17.8)	3 (11.36)	4 (15.1)	4 (15.1)	4.7 (17.8)	4.7 (17.8)	9.4 (35.6)	9.4 (35.6)	9.4 (35.6)
Drive Tire Size (diameter x width)	18x7	18x7	18x8.5	18x8.5	18x9.5	18x9.5	18x9.5	18x8.5	18x8.5	18x8.5	18x8.5	18x8.5	22x10.5	22x10.5	22x10.5
Top Speed (MPH & km/h)	6.5 (10.5)	7.4 (12)	6.5 (10.5)	6.5 (10.5)	6.5 (10.5)	6.5 (10.5)	6.5 (10.5)	7 (11.3)	8 (13)	8 (13)	8 (13)	8 (13)	10 (16)	10 (16)	10 (16)
Tractor + Deck Length (in)	87	89.25	89.25	89.25	93	93	93	93 ¹	90.25	90.75	90.75	90.75	107	107	107
Tractor + Deck Tilted Length (in)	77	77	77	77	77	77	77	77	72	72	72	72	87.75	87.75	87.75
Height (in)	46.5	46.5	47.5	47.5	50	50	50	42	39.5	39.5	39.5	39.5	46.5 ²	46.5	46.5
Tractor Only Width (in)	36.25	36.25	37.75	37.75	39	39	39	39	38.5	38.5	38.5	38.5	46.5	46.5	46.5
Tractor Only Weight (lb & kg)	596 (270)	636 (289)	734 (333)	739 (335)	790 (358)	787 (357)	959 (435)	404 (183.3)	584 (265)	583 (264)	588 (267)	610 (277)	997 (452)	748 (340)	778 (353)
Tractor + Deck ³ Weight (lb & kg)	767 (348)	827 (390)	925 (420)	930 (422)	1009 (458)	1006 (457)	1178 (534)	575 (260.8)	790 (358)	789 (358)	794 (362)	848 (385)	1434 (650)	1185 (537)	1215 (551)

¹Using a 42" deck. ²ROPS folded. ³S: C36, C: C42, T & D: C48, R: 42" B: S48, H: R64.

- Gasoline engines require unleaded 87+ octane
- Diesel engines require 2-D full pressure lube systems with filter. S14i has mechanical splash lube system
- 12V electrical systems
- Flywheel alternator charging, D21d has belt driven alternator
- Ignition lockout by seat switch, transmission neutral, blade clutch, and parking brake
- All machines feature dual, independent hydrostatic transmissions
- Dual lever steering, precision friction-lock Forward Speed Control lever with neutral/park position
- Internal mechanical parking brake
- Cutting height 1.5" to 4", 1.5" to 4.5", or 1" to 5", varies per model
- Heavy-duty stamped steel cutting blades, tempered
- Blade clutch and brake with manual belt tightener
- Electric blade clutch with easy pull/ push switch operation on Model
- Decks and add-ons powered by splined PTO shaft with dual u-joints allowing dynamic articulation
- Deck carrier frame with flexible deck suspension, caster wheels, and counterweight springs
- Welded, heavy gauge, steel chassis
- Welded, 14 gauge steel bodies
- Welded, 11 gauge steel decks

