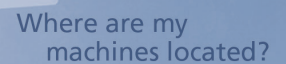
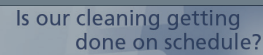
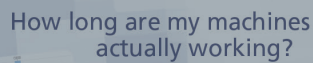


- Transparency and profitability at your fingertips

- Transparency and profitability at your fingertips



Who was operating that scrubber?

Does my equipment need service?

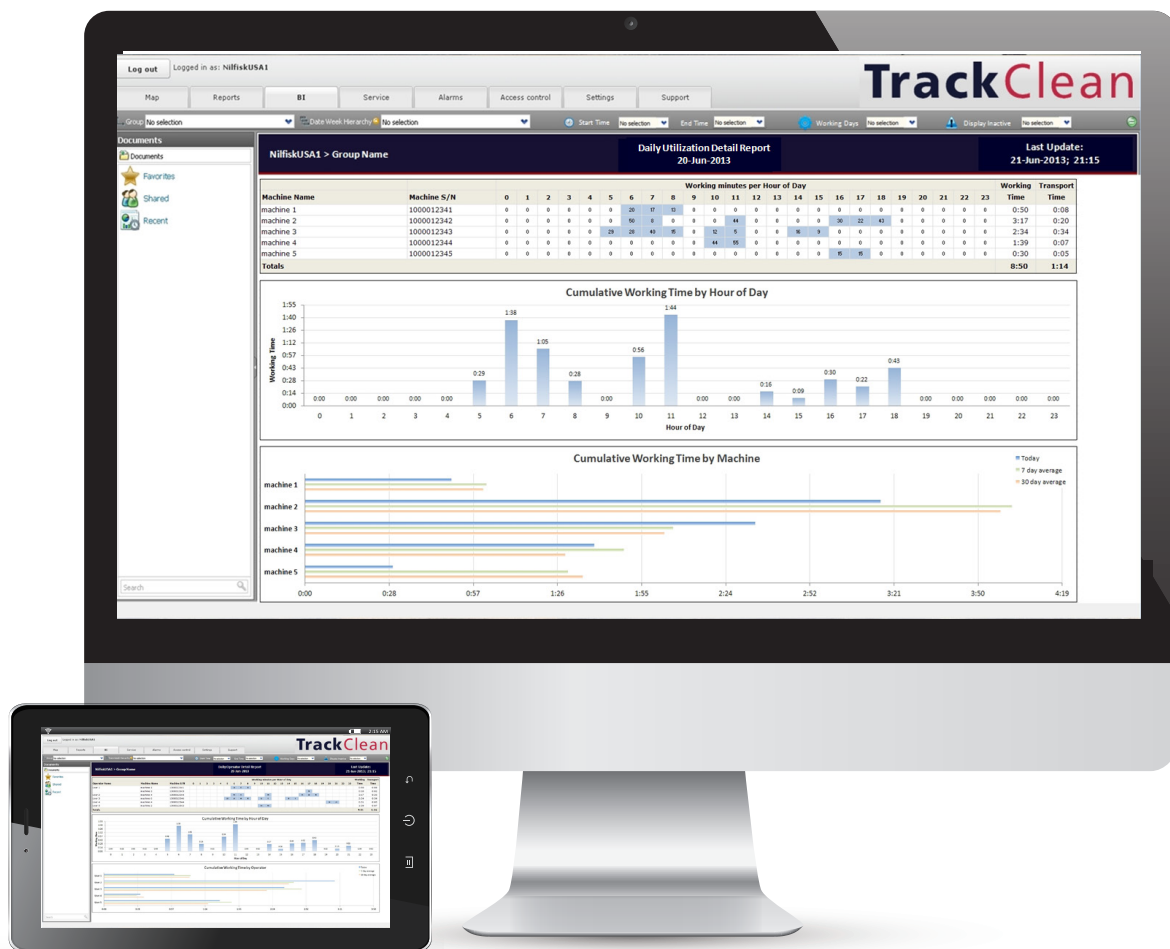
[illegible]

Could our cleaning processes be more efficient?



How can we increase productivity?





TrackClean gives you 24/7 remote access to every connected cleaning machine. This means you know exactly *what* is happening, *when* and *where* it is happening and *who* is doing it – with every connected machine you can monitor, verify and improve your operational effectiveness.



Track your equipment – track your success

- Fleet management system for the cleaning professional

With TrackClean, you can now initiate proactive improvements in your cleaning program. The TrackClean system monitors fleet operations and transmits the equipment operation data to a secure web portal. The data includes the machine working time, the machine down time, time of day that each activity occurred, the geographic location of the machine, and as an option can include information about the operator.

The system creates reports that ensure you can drive results into your cleaning operation. You can access the secure web portal to review your fleet operations 24/7. You can also schedule reports to be proactively sent directly to your email.

YOUR BENEFITS

- TrackClean records operational data of your fleet, ensures transparency and increases your profitability
- TrackClean allows you to intelligently optimize your cleaning program, monitor cleaning performance and reduce cost
- The intuitive web portal is accessed via your PC, tablet device or smart phone and provides you with a detailed overview of machine activity to help you drive results into your cleaning operation
- Data is available 24/7 ensuring you the possibility to optimize your machine deployment and reduce down-time
- TrackClean notifies you of any issues that needs immediate attention and can help reduce your repair costs and down-time

ALL THIS AND MORE IS AVAILABLE TO YOU AT YOUR FINGERTIPS 24/7

With the intelligence of TrackClean, you can now link your operation data to cleaning performance and customer satisfaction – this will help ensure your team is delivering the best clean while improving efficiency.

The TrackClean fleet management system is available on a variety of the most popular Nilfisk cleaning machines. For more information, please contact your local sales partner.





Track your equipment – track your success

- Fleet management system for the cleaning professional



With the TrackClean fleet management system, no matter the size of your cleaning equipment fleet, you can leverage the power of cloud-based data reporting in real time to optimize your resources and productivity. This results in more cleaning time, more facilities cleaned and more satisfied customers, and this is why TrackClean does not just track your equipment – it tracks your success.

For more information, please contact your local sales partner.

TrackClean monitors your fleet operation, transmits the data to your secured web portal and converts the data into useful information.

- Scrub time
- Transport time
- Machine identification
- Machine location
- Operator ID
- Time of day for every machine action