

ASCO SERIES 300 Manual Transfer Switch Solutions

When power fails, businesses suffer. For some organizations, a permanent generator is too costly. Instead, a permanent means for quickly connecting a portable or temporary generator can make economic sense. Installing a manual transfer switch and a connecting means can provide an adequate and cost effective solution. This equipment can provide access for an alternate power source when a generator malfunctions or is removed from service for maintenance.



The ASCO SERIES 300 Manual Transfer Switch is perfect for commercial and municipal applications:

- 3-Position center-off switch is robust and easy-to-use
- Leverages ASCO's reliable, field-proven, transfer switching technology
- Modular, compact design is easy to install and maintain
- Designed to handle the demands of motors and high inrush loads
- Service Entrance configurations available

Versatile Configurations Fit a Wide Range of Applications

UL-1008 listed models for 150 to 1200 Amps, single or 3-phase power to 600 VAC. Service Entrance configurations available.

A Simple Solution to New NEC® 700.3 Requirements

When installed with ASCO Cam-Lock Connectors, allows fast connection of temporary and portable generators when permanent standby generators are off-line.

Provides Maximum Reliability and Excellent Value

Backed by the technology, support and service of ASCO Power Technologies, developer of virtually every major technological advance in the critical power switching industry.



Applications



Healthcare

Healthcare facilities require uninterrupted power to mitigate risks and ensure patients receive the best possible care. When only a single permanent generator provides backup power, the NEC® now requires a means for connecting a portable generator. ASCO's SERIES 300 MTS can be used to switch loads to a temporary power source when permanent generators are off-line.



Telecom

Telecommunications facilities must provide a high level of service and dependability. Lost power could disrupt critical services to customers and businesses. The ASCO SERIES 300 MTS provides a way to keep power on and customers online.



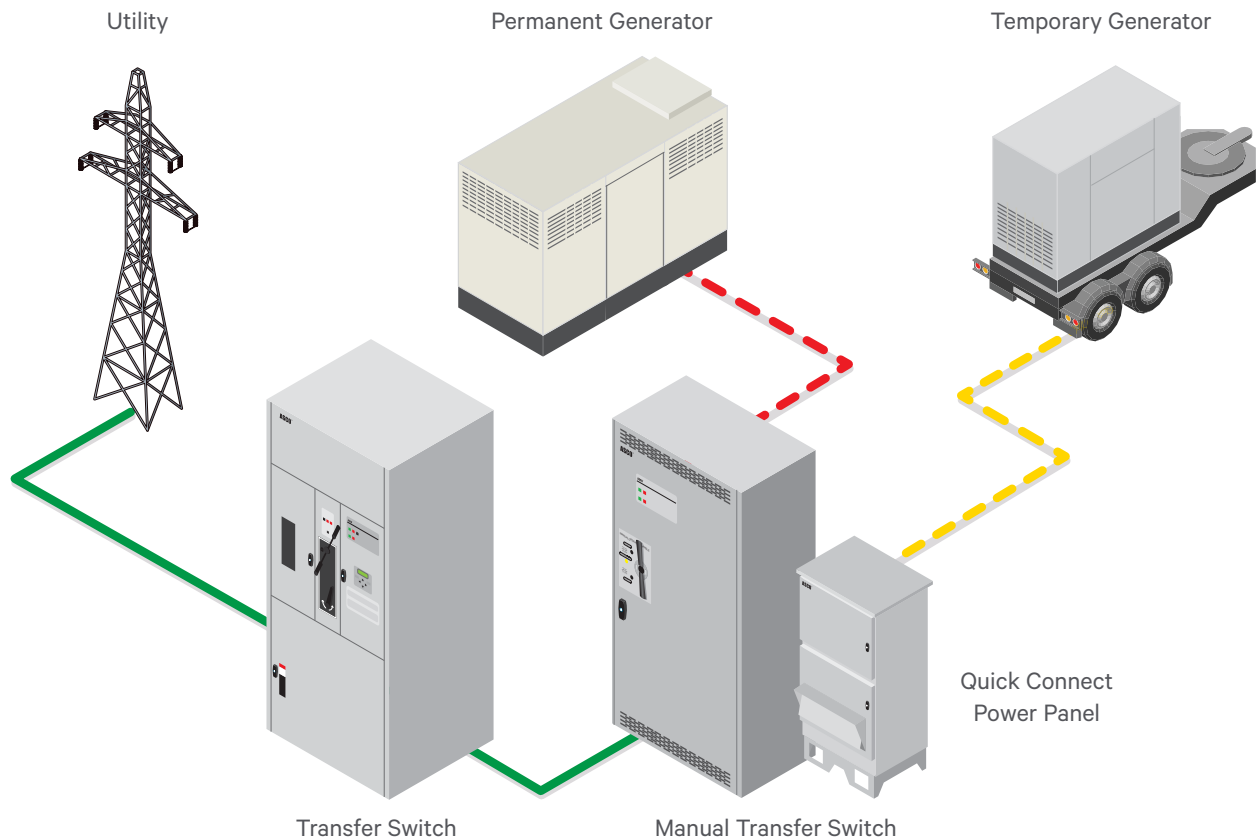
Municipal

Communities rely on city and county governments for critical emergency services. A power interruption can hinder emergency response. The ASCO SERIES 300 Manual Transfer Switch enables connection to backup power for critical services when they are needed most. It also provides also cost-effective backup solution for water and wastewater pump stations.



Commercial, Retail, Light Industrial

Power interruptions can profoundly impact the revenues of retail, commercial, and industrial businesses. Outages interrupt shopping, disrupt operations, and create safety problems. They can result in lost transaction data, lost account information, and damaged data equipment. Loss of refrigeration can lead to ruined inventory. The ASCO SERIES 300 Manual Transfer Switch provides a cost-efficient backup power switching solution for small businesses.



Features

- Transfer Switches listed to UL 1008 standard for optional standby transfer switches - Service Entrance configurations listed to UL 891
- Dual-operator configuration provides 3-position switching with center-off position
- Switch design prevents simultaneous connection to two power sources
- Available from 150 to 1200 Amps, up to 600VAC, single or 3-phase
- Meets NFPA 110 standards for Emergency and Standby Power Systems and NEC® Article 700.3(F)
- Available with solid neutral termination or switched neutral pole
- Auxiliary contacts indicate position of main contacts - two for Normal and two for Emergency
- ASCO 170 Family of accessories provide enhanced user interfaces and controls:
 - LED indicators and Form C contacts for switch position and source availability
 - Phase rotation monitoring to ensure correct connection of temporary source
 - Engine start switches
 - IO Module for Building Management System Integration
- Restriction of Hazardous Substances (RoHS) compliant

Simple and Effective 3 Position Switch



Catalog Information

J	+	03MTS	+	A	+	3	+	0600	+	N	+	0X	+	M
Frame		Product		Neutral Code		Phase Poles		Amperes		Voltage Code		Group Code		Enclosure
J = 150 - 600A H = 800 - 1200A		03MTS - Manual Transfer Switch 03MUS - Service Entrance Manual Transfer Switch		A - Solid Neutral B - Switched Neutral		2 3		0150 0200 0230 ¹ 0260 ¹ 0400 0600 0800 1000 1200		A - 115 B - 120 C - 208 D - 220 E - 230 F - 240 H - 380 J - 400 K - 415 L - 440 M - 460 N - 480 P - 550 Q - 575 R - 600		00 - No Accessory 0X - Accessory 0Z - Custom Accessory		C - Type 1 M - Type 3R Secure N - Type 4 Secure S - Type 3RX Secure (316) SS V - Type 4X Secure (316) SS

Note 1: For Service Entrance switches rating is 225, and 250 amperes respectively

ASCO 170 Family of User Interface/Annunciation Accessories for SERIES 300 Manual Transfer Switches

170	+	B	+	P	+	1
Accessory Description		User Interface/Controls		Phase Rotation		IO Module
All 170 Accessories Include LEDs and Contacts For: - Source 1 Available - Source 2 Available - Connected to Source 1 - Connected to Source 2 - Disconnected Position		B – Base (Source Indication Only. No engine start switch or common alarm) E – Maintained Engine Start Switch/Output With Common Alarm Input/LED/Contact K – Keyed Maintained Engine Start Switch/Output with Common Alarm Input/LED/Contact		P = Phase Rotation Monitor (LED) Blank = none		1 = IO Module Blank = none

Additional ASCO SERIES 300 Manual Transfer Switch Accessories

Accessories	Description
44A	Strip heater with thermostat prevent condensation and ice formation of water. External 120V power source required
44G	Strip heater with thermostat wired to load terminals
73	Surge Suppressor Rated 65kA