

FG LANDFILL FACILITY
COMMUNITY ENGAGEMENT STRATEGY
10 POINT ACTION PLAN

Developed in association with the Department of Environmental Affairs

March 2017

Compiled By Interwaste

Doing the right thing...
is informing our community.

For more information contact us on (011) 323 7300 or info@interwaste.co.za



FG Landfill Storm Water Management



The diagram illustrates the storm water management process at a landfill. It shows a cross-section of the landfill with a brown top layer and a green bottom layer. A dark blue cloud with rain is on the right. A grey pipe with arrows pointing left is shown with the text 'Storm water from the landfill is discharge to the Leachate Dam'. A green pipe with arrows pointing left is shown with the text 'Storm water from around the landfill is tested, before discharged'. A dotted line with a circle at the end is at the bottom.

Storm water from the landfill is discharge to the Leachate Dam.

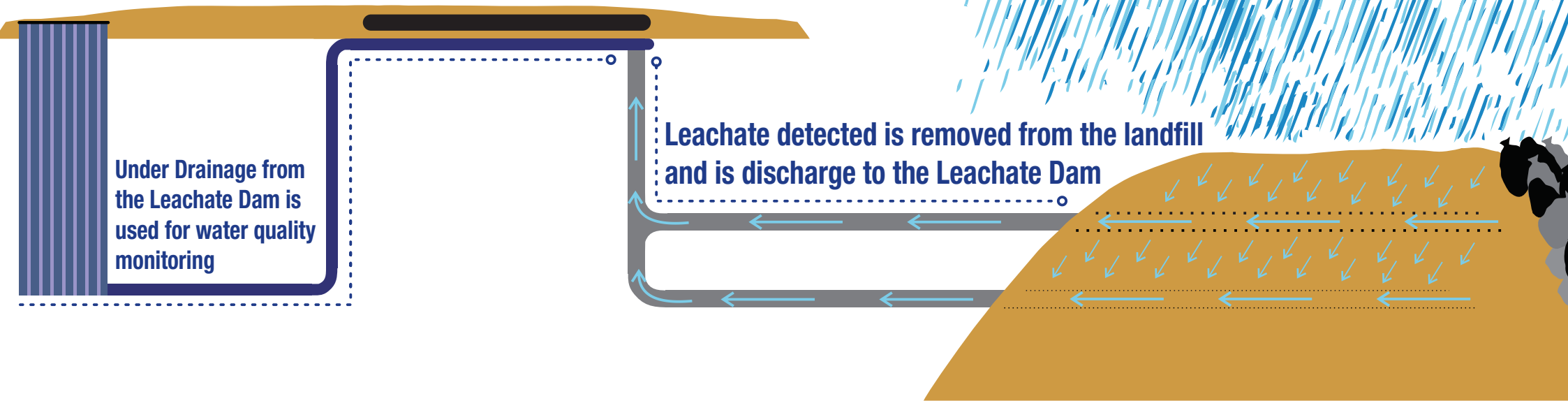
Storm water from around the landfill is tested, before discharged.

Doing the right thing...
is informing our community.

For more information contact us on (011) 323 7300 or info@interwaste.co.za



FG Landfill Leachate Management

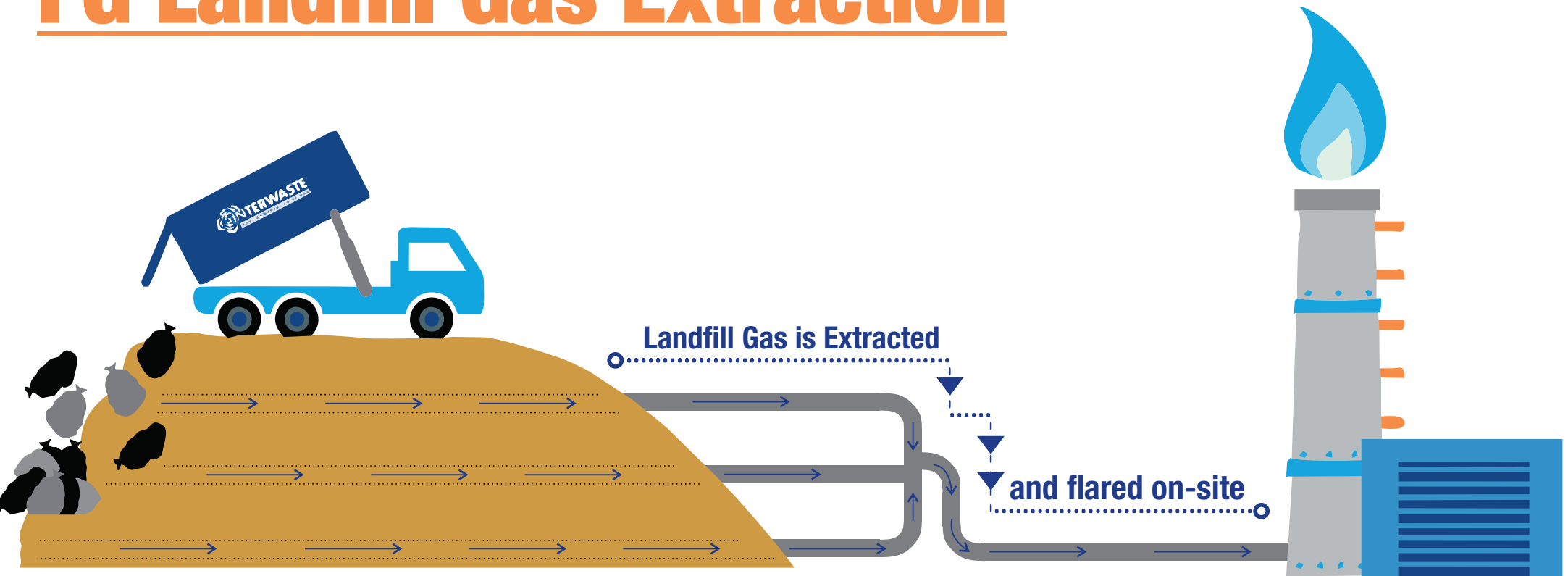


Doing the right thing...
is informing our community.

For more information contact us on (011) 323 7300 or info@interwaste.co.za



FG Landfill Gas Extraction

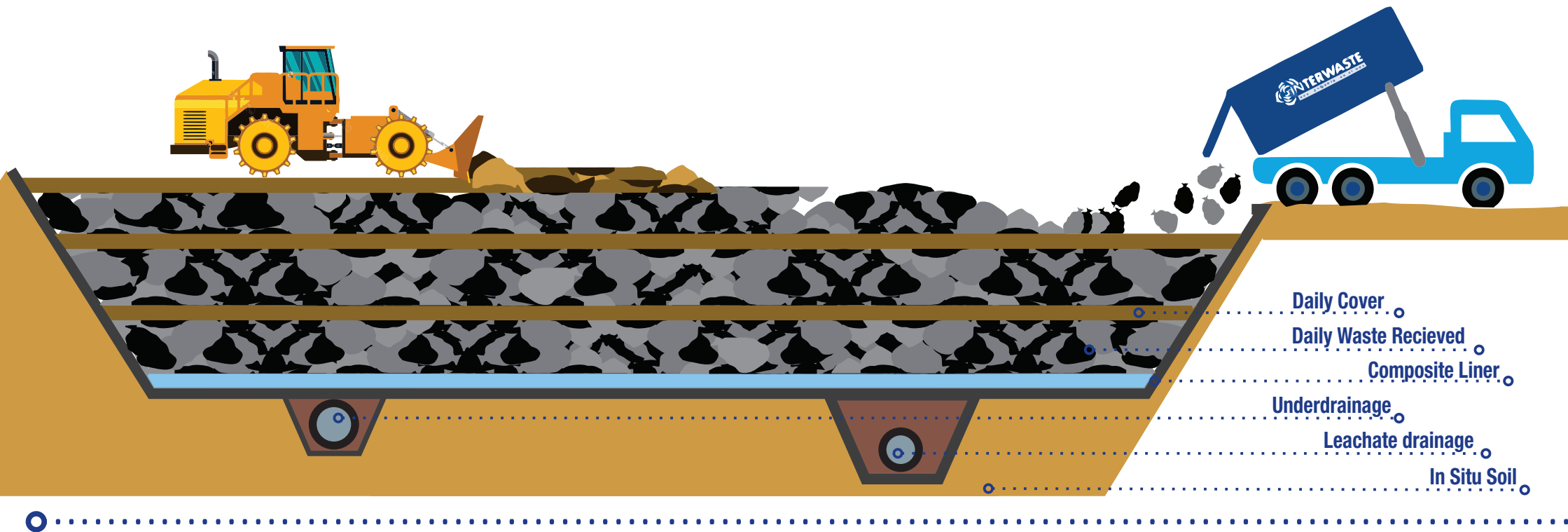


Doing the right thing...
is informing our community.

For more information contact us on (011) 323 7300 or info@interwaste.co.za



FG Landfill Engineering Plan

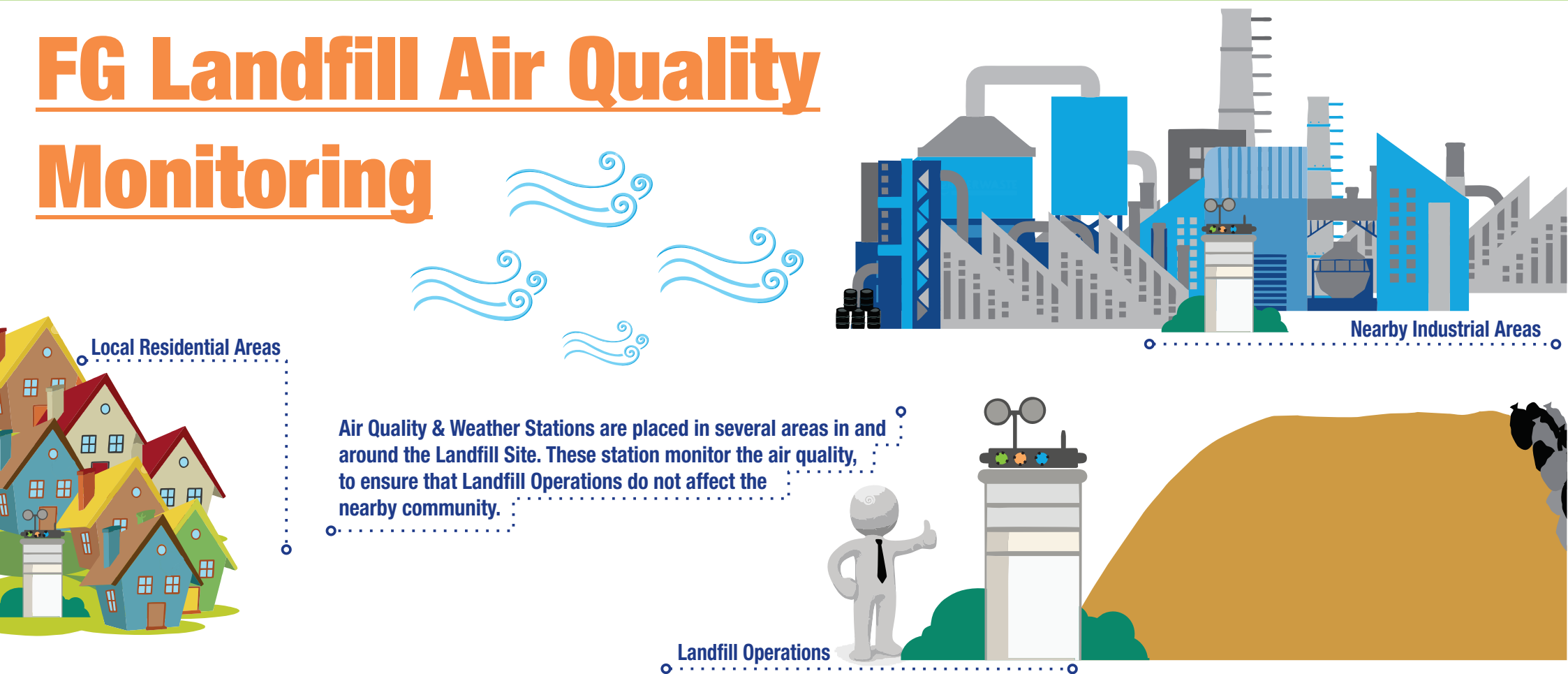


Doing the right thing...
is informing our community.

For more information contact us on (011) 323 7300 or info@interwaste.co.za



FG Landfill Air Quality Monitoring



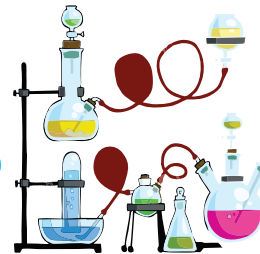
Doing the right thing...
is informing our community.

For more information contact us on (011) 323 7300 or info@interwaste.co.za



FG Landfill Legal Compliance

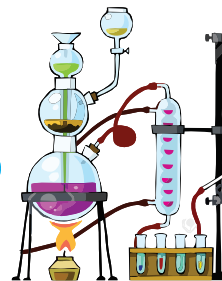
Waste Not Suited for Disposal at FG Landfill



Alternative Solution
Required



Waste Suited for Disposal at FG Landfill



Safe for landfill disposal

Acting in compliance with
National Environmental
Management Act (NEMA)

Doing the right thing...
is informing our community.

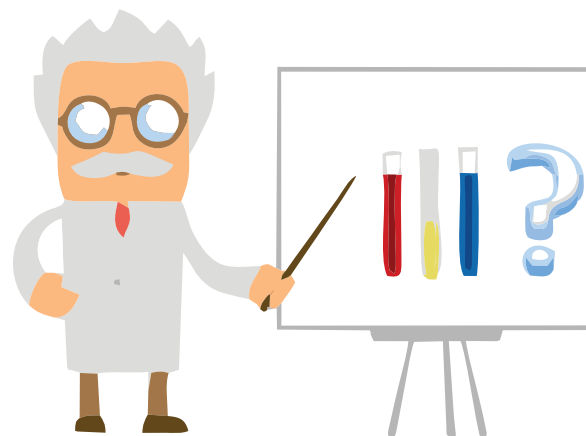
For more information contact us on (011) 323 7300 or info@interwaste.co.za



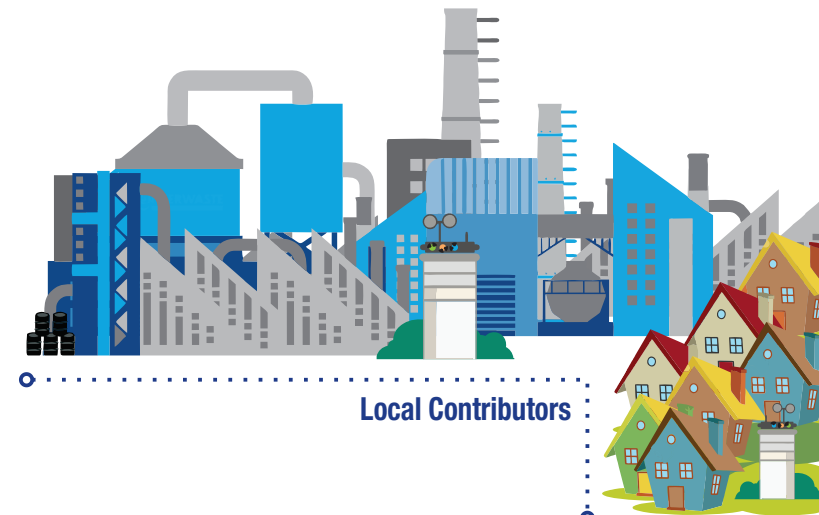
FG Landfill Toxicology



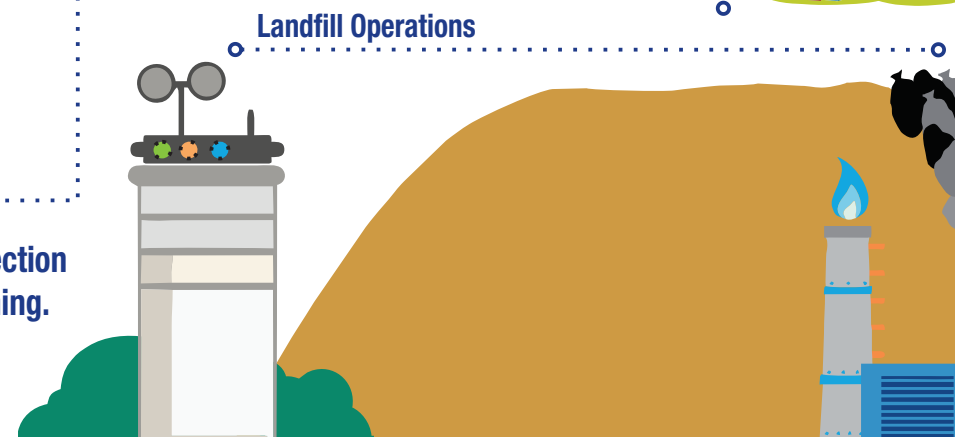
Emissions from surrounding factors



Toxicology is the study of the nature, effects and detection of potential poisons. This includes how to treat poisoning.



Local Contributors



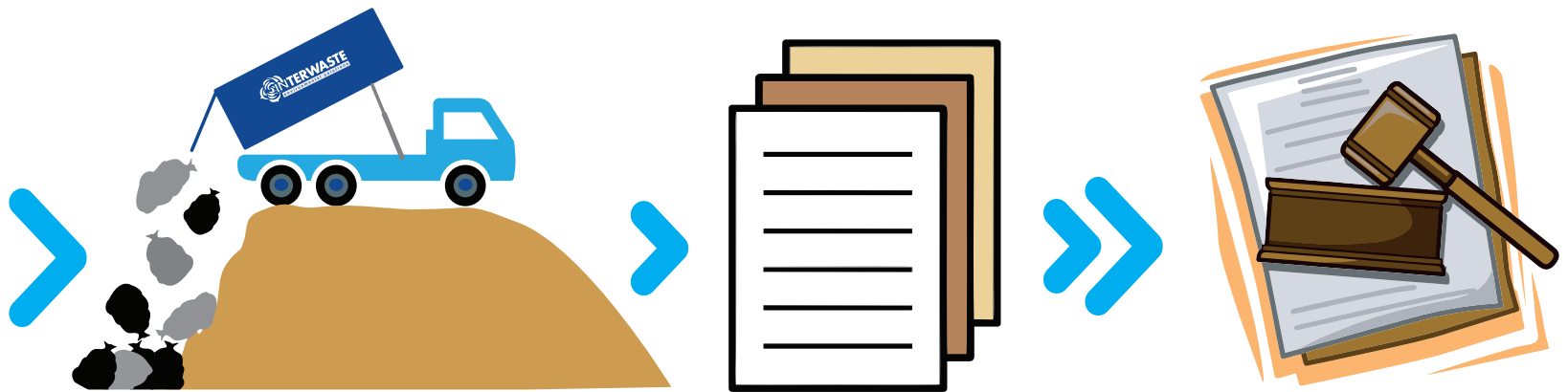
Landfill Operations

Doing the right thing...
is informing our community.

For more information contact us on (011) 323 7300 or info@interwaste.co.za



FG Landfill Working With The DEA



environmental affairs

Department:
Environmental Affairs
REPUBLIC OF SOUTH AFRICA

Interwaste is committed to working alongside the DEA to ensure compliance and address points highlighted in the issued directive

Doing the right thing...
is informing our community.

For more information contact us on (011) 323 7300 or info@interwaste.co.za



FG Landfill Press Statements



Doing the right thing...
is informing our community.

For more information contact us on (011) 323 7300 or info@interwaste.co.za



FG Landfill Stakeholder Engagement



Doing the right thing...
is informing our community.

For more information contact us on (011) 323 7300 or info@interwaste.co.za

