

2793 Ft² | 4 Bed/2.5 Bath | 2-Car Garage | Gourmet Kitchen | Granite Countertops



19 Boss Road

\$604,150 – The Amwell

- Walkout Basement
- 9' Foundation Walls
- 10-Year Protection with 2-10 Home Buyer's Warranty
- Award-Winning Blue Ribbon School District

Delivery in 9 Months



Phone: (908) 359-3276 | Email: WAMY@Country-Classics.com |
www.Country-Classics.com

See Sales Associate for complete information regarding selections chosen for this home. Promotions valid with full price offers only. Statements, images and representations are indicative only. Prices subject to change without notice. Subject to errors and omissions. 04/03/19





The Estates at East Amwell

Community Features



Required Deposit:

- \$1,000 due upon lot/model reservation
- 10% of purchase price due within three days of Attorney Review conclusion
- 10% of Design Studio Options due when final selections are submitted

Public Utilities (Underground):

- Electric: JCP&L
- Gas: Propane
- Sewage: Septic
- Water: Well
- Phone / Cable / Internet: Comcast

Estimated Delivery:

- 9 months from conclusion of Attorney Review

School System (<http://www.eastamwell.org/>):

- East Amwell Township School (PreK-8)
- Hunterdon Central Regional High School (9-12)

Property Tax Information:

- The 2018 tax rate is \$2.395*

Association Fee:

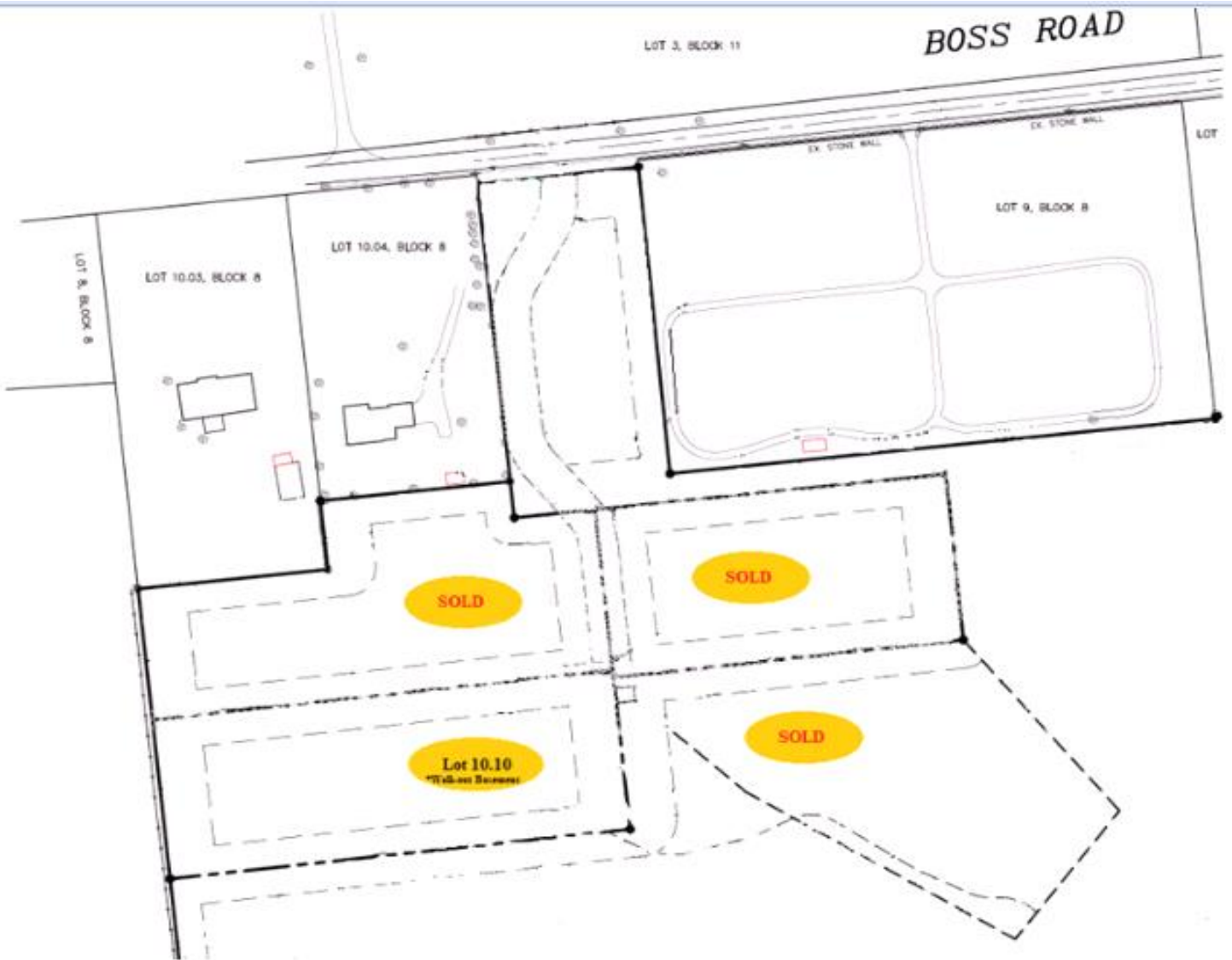
- Initial Capital Contribution \$234
- \$350/quarter for detention basin maintenance

*For detailed 2019 tax rate information, please contact the tax assessor Marianne Busher at 908-782-8536.



The Estates at East Amwell

Site Map



This rendering is an illustration of the general features of the community. Buyer should inspect detailed sub-division, utility and construction plans on file in the main office for complete information regarding the physical features of the community. 07/05/18

Driving Directions

From I-287 (NJ): Route I-287 N to exit 22A, US 202 S / US 206 S toward Pluckemin. Continue straight to US 202 S. Continue for 19 miles. At the traffic circle, take the third exit to stay on US 202 S. After 4.4 miles, turn right onto NJ-179 S. In 1 mile take a slight right turn to continue onto Old York Rd. Turn right on Boss Road.

From Somerville Circle (NJ): At the traffic circle, take the third exit to stay on US 202 S. After 4.4 miles, turn right onto NJ-179 S. In 1 mile take a slight right turn to continue onto Old York Rd. Turn right on Boss Road.

From Princeton Area (NJ): Route 206 South. Turn right onto Georgetown Franklin Turnpike. Continue for 6.6 miles, then turn right onto Louellen St. After 2.8 miles take a slight right turn onto Route 31 N. In 4.3 miles turn left onto Old York Rd. Continue left onto Old York Rd. Turn right onto Boss Road.