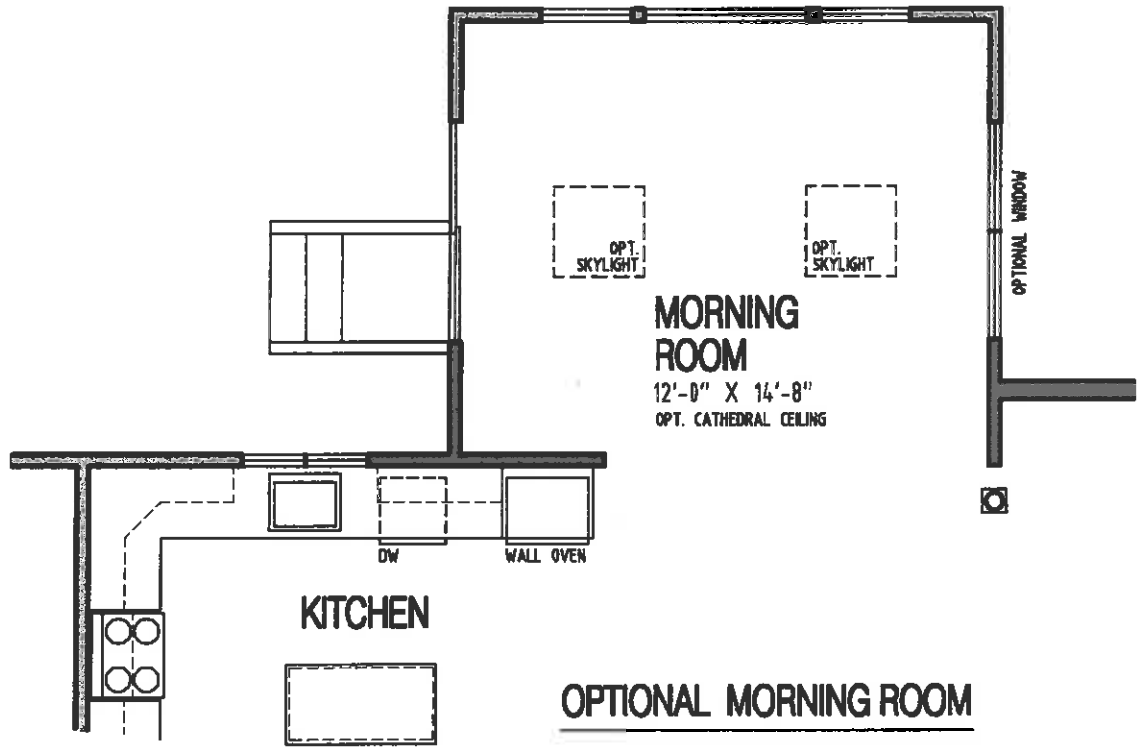
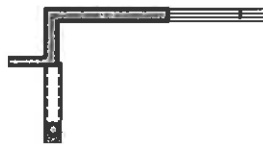


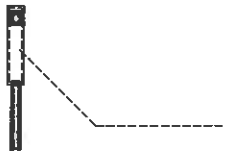
**FIRST FLOOR**



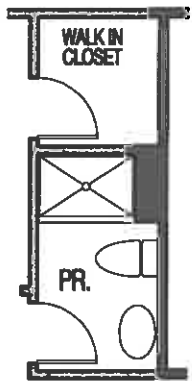
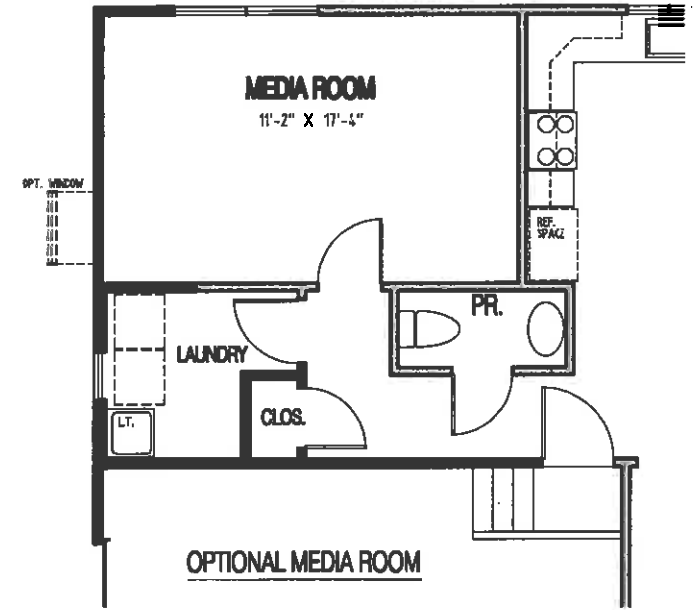
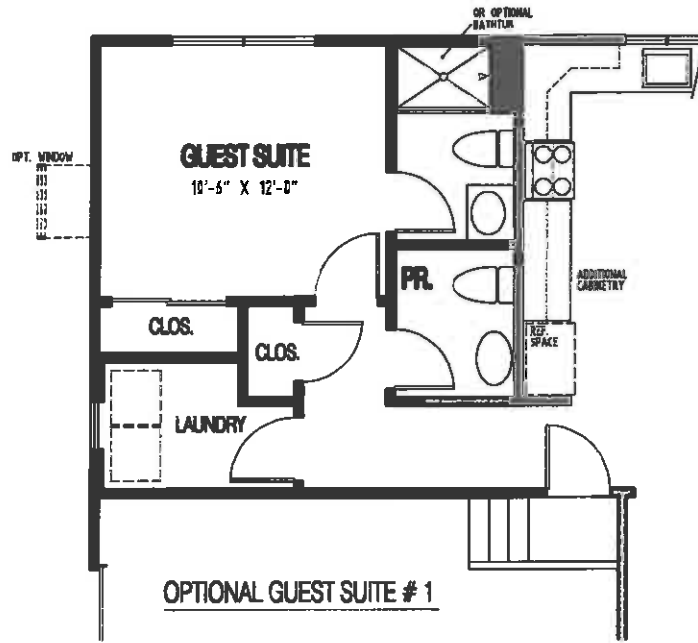
OPTIONAL MORNING ROOM



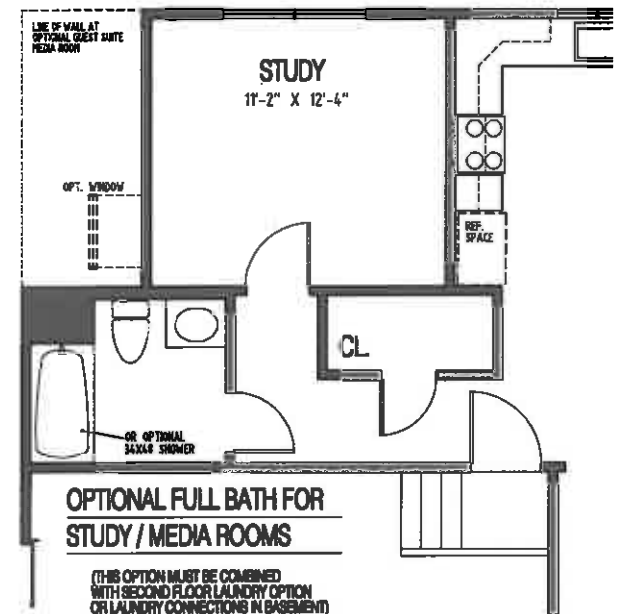
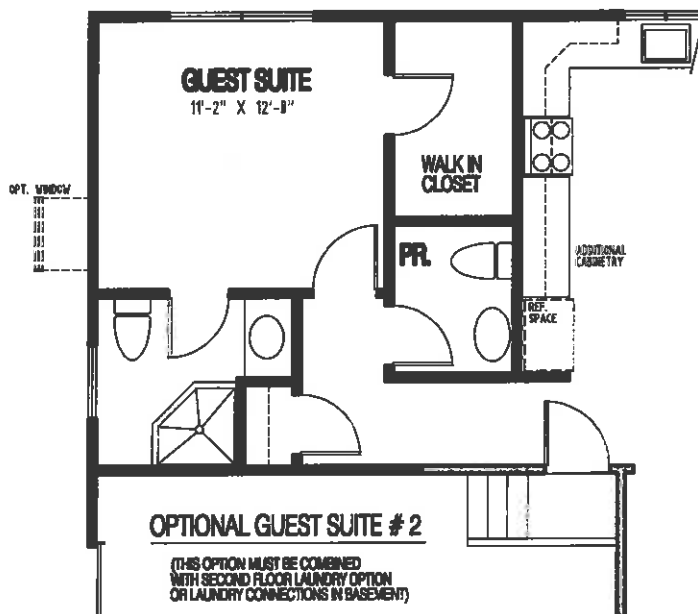
**FAMILY ROOM**  
VOLUME CEILING  
15'-2" X 24'-4"

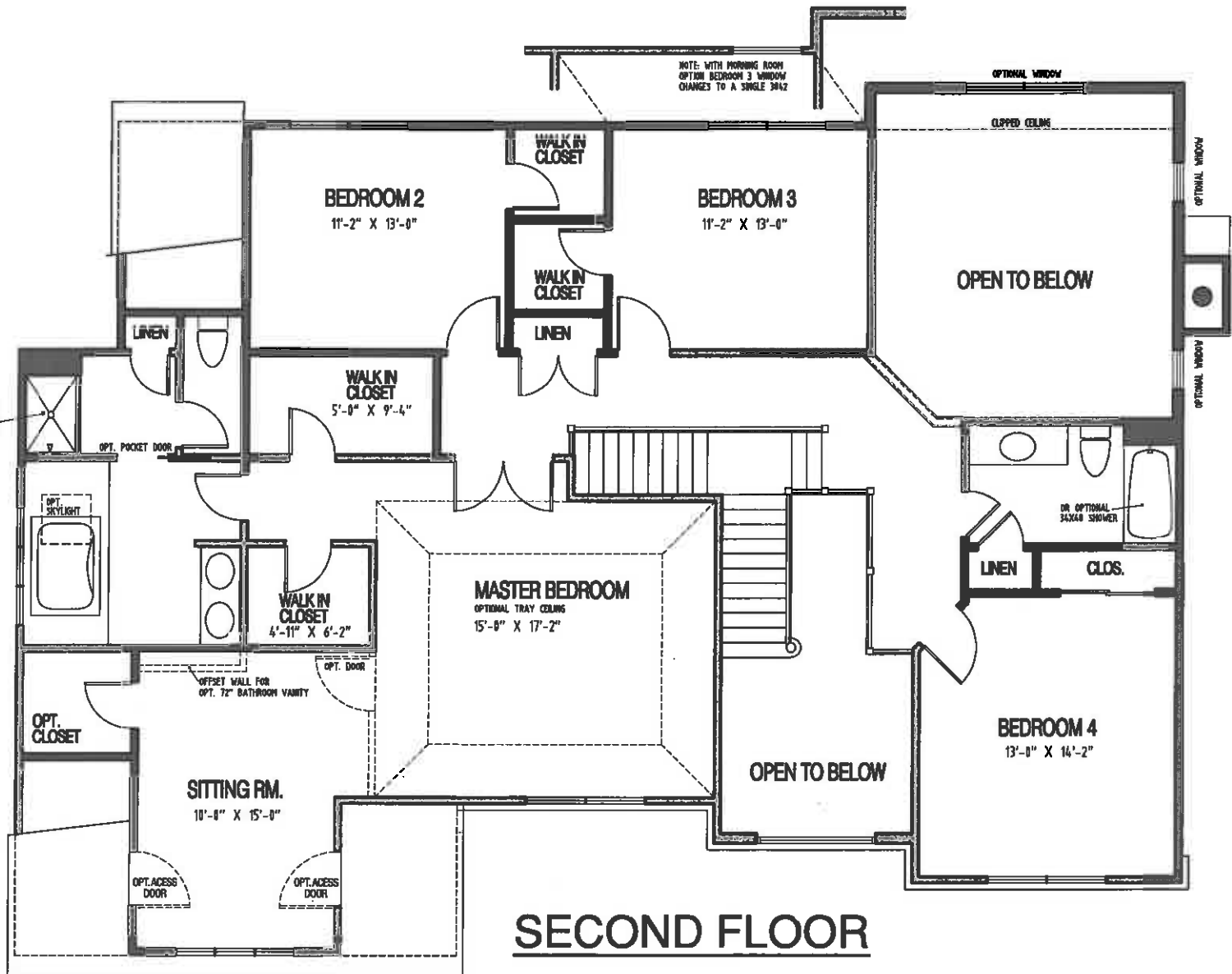


**OPTIONAL KNEE WALLS  
IN FAMILY ROOM**

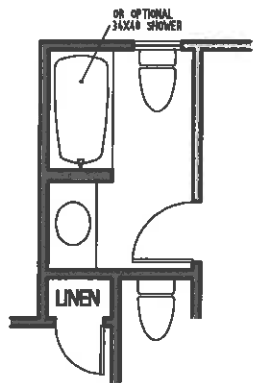


**OPTIONAL SHOWER  
IN POWDER ROOM**  
(AVAILABLE WITH OPT.  
GUEST SUITE #2 ONLY)

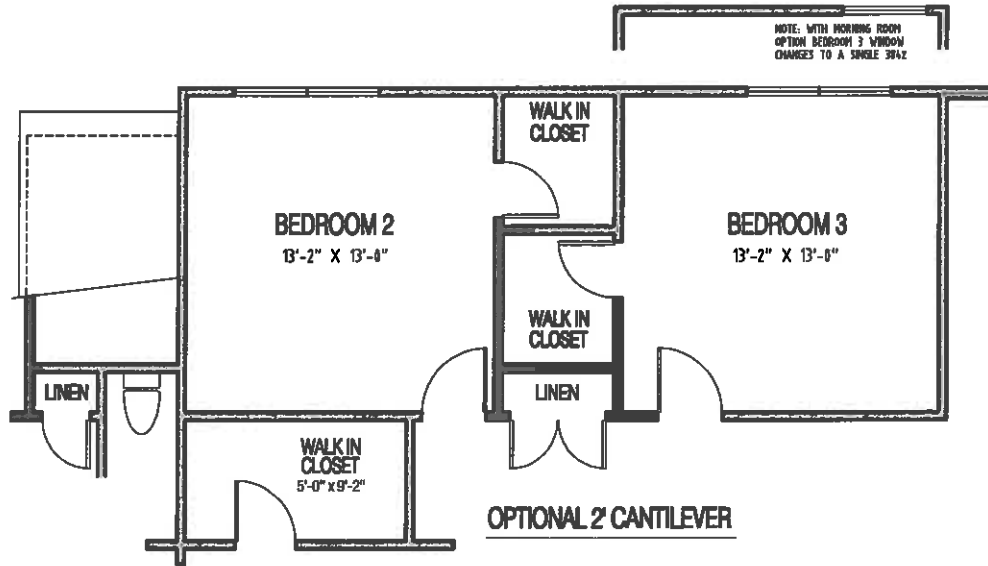




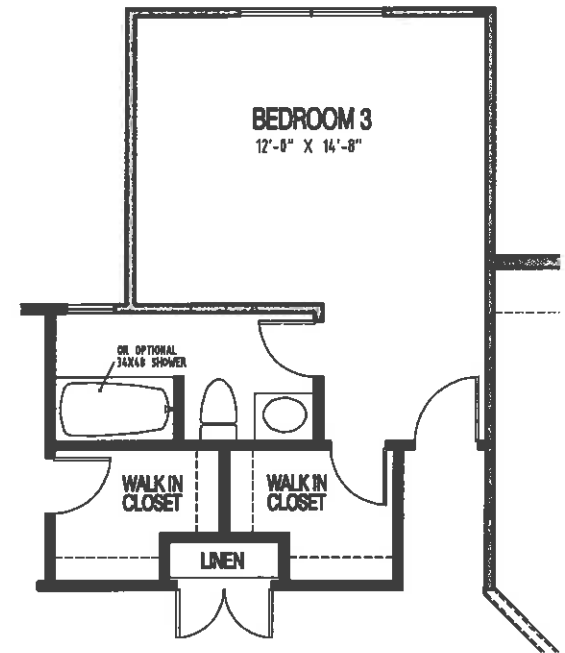
**SECOND FLOOR**



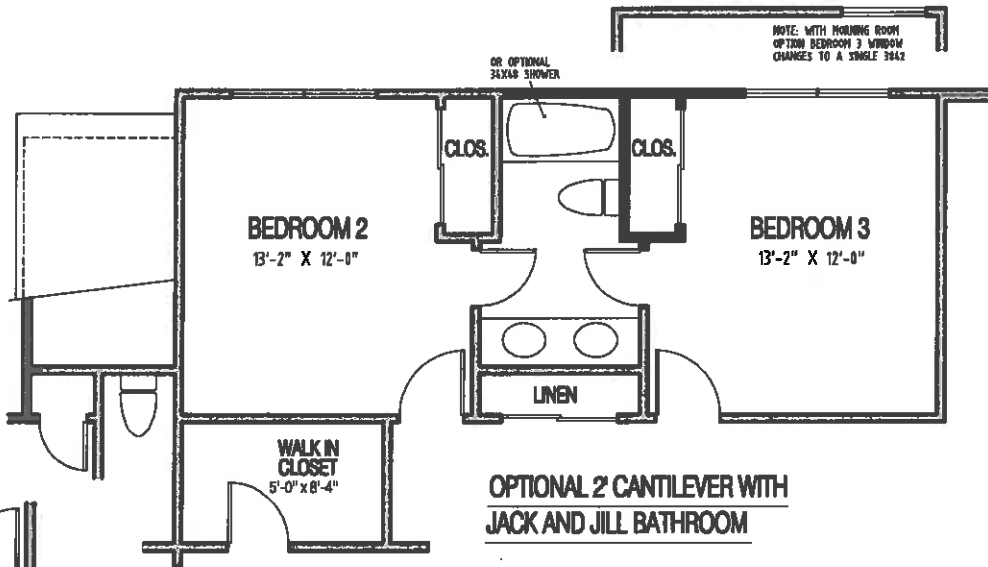
**OPTIONAL PRINCESS BATH  
BEDROOM # 2**



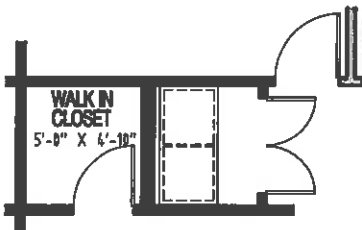
**OPTIONAL 2' CANTILEVER**



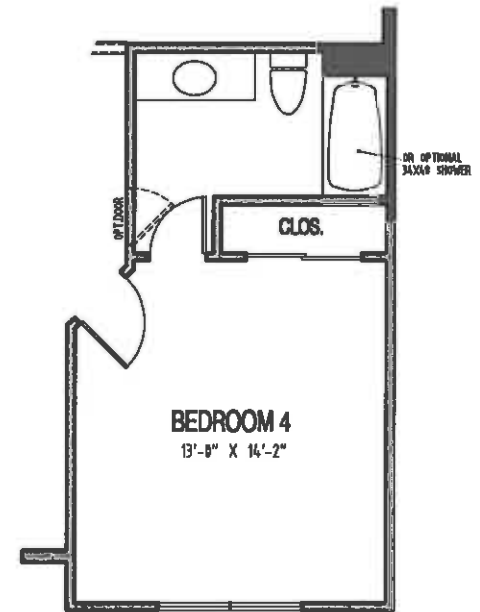
**OPTIONAL BEDROOM #3 PRINCESS  
SUITE OVER MORNING ROOM**



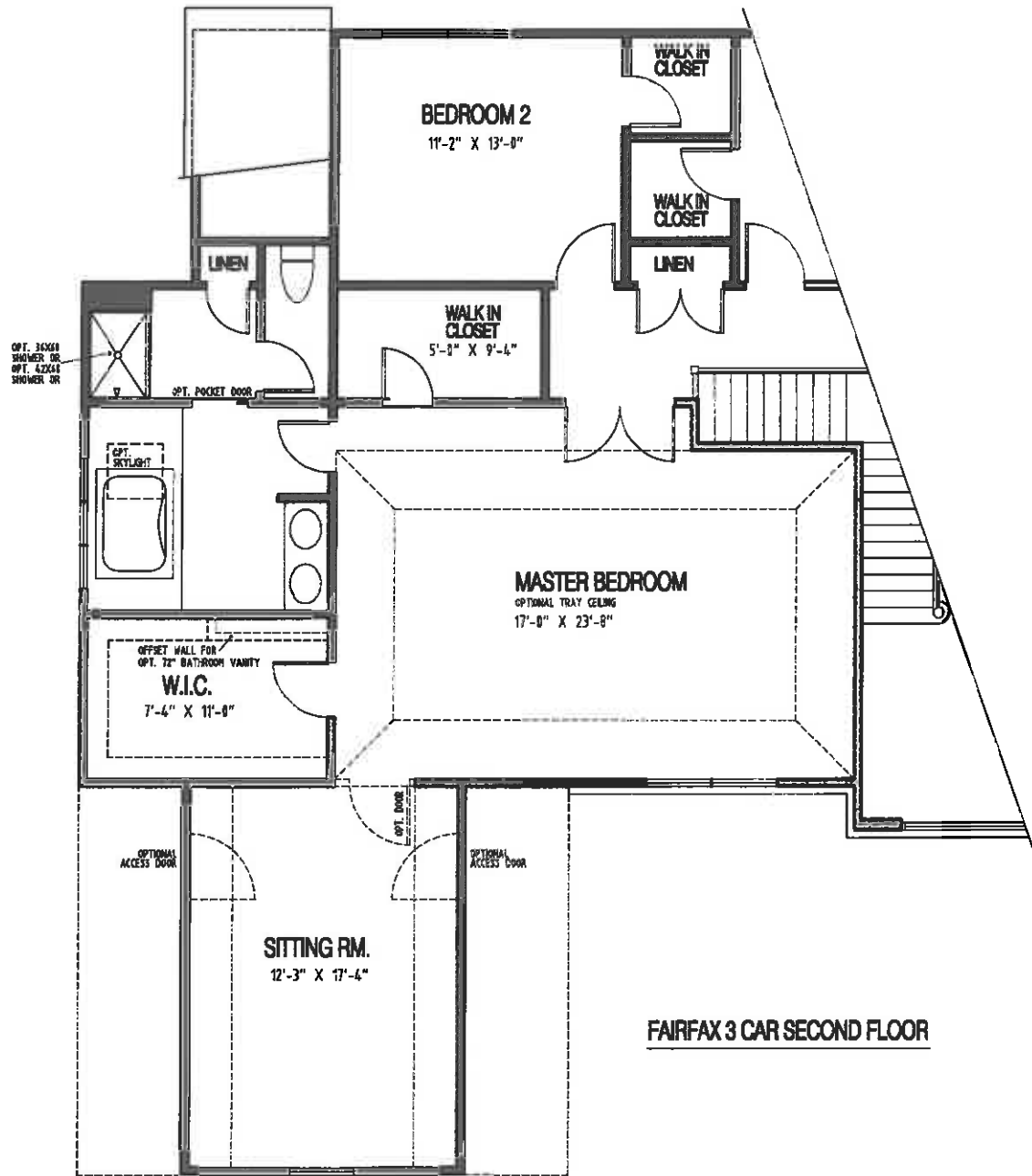
**OPTIONAL 2' CANTILEVER WITH  
JACK AND JILL BATHROOM**



**OPTIONAL SECOND  
FLOOR LAUNDRY  
(NOT AVAILABLE WITH  
JACK AND JILL LAYOUT)**



**OPTIONAL PRINCESS SUITE  
BEDROOM #4**



**FAIRFAX 3 CAR SECOND FLOOR**