

This file has been cleaned of potential threats.

If you confirm that the file is coming from a trusted source, you can send the following SHA-256 hash value to your admin for the original file.

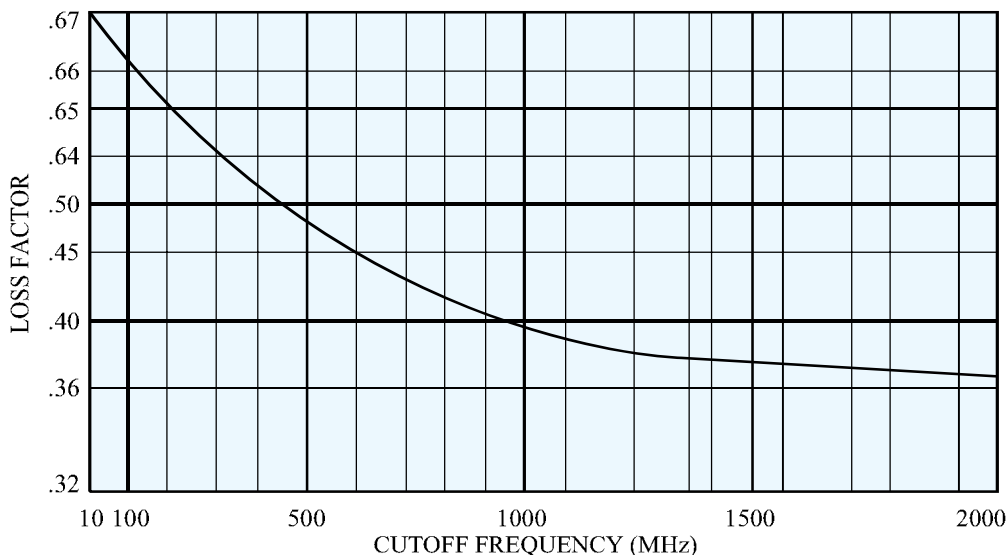
b2883904b5025a759701551ca75f2f365a89db796db206d18f26c0cb7a1f84a1

To view the reconstructed contents, please SCROLL DOWN to next page.



SPECIFICATIONS	STANDARD	*SPECIAL
<b>ELECTRICAL</b>		
Cutoff Frequency (Fco)	10 to 1500 MHz	1 to 2500 MHz
Number of Sections Available	3 to 6	2 to 10
Nominal Impedance	50	50 to 300
Maximum Insertion Loss	See Curve	See Curve
Maximum VSWR (Fco. to 3 Fco.)	1.5/1	1.3/1
Attenuation in the Stopband	See Page 67	See Page 67
Maximum Input Power (Average) (Watts to 10,000 ft.)	2	5
Maximum Input Power (Peak) (Watts to 10,000 ft.)	20	40
<b>ENVIRONMENTAL</b>		
Shock	20 G's	50 G's
Vibration	10 G's	15 G's
Humidity	95% relative	100% relative
Altitude	Unlimited	Unlimited
Temperature Range (Operating)	-40°C to + 85°C	-55°C to + 125°C
Temperature (Non-Operating)	-65°C to + 125°C	-65°C to + 125 °C
<b>MECHANICAL</b>		
Approximate Weight in Grams	L x 4	L x 4
Mounting Provisions	See Next Page	See Next Page

\*Contact Lark Engineering



**INSERTION LOSS:**

The maximum Insertion Loss at cutoff frequency is equal to:

$$LF \times N + 0.05dB$$

Where:

LF = Loss Factor

N = Number of Sections

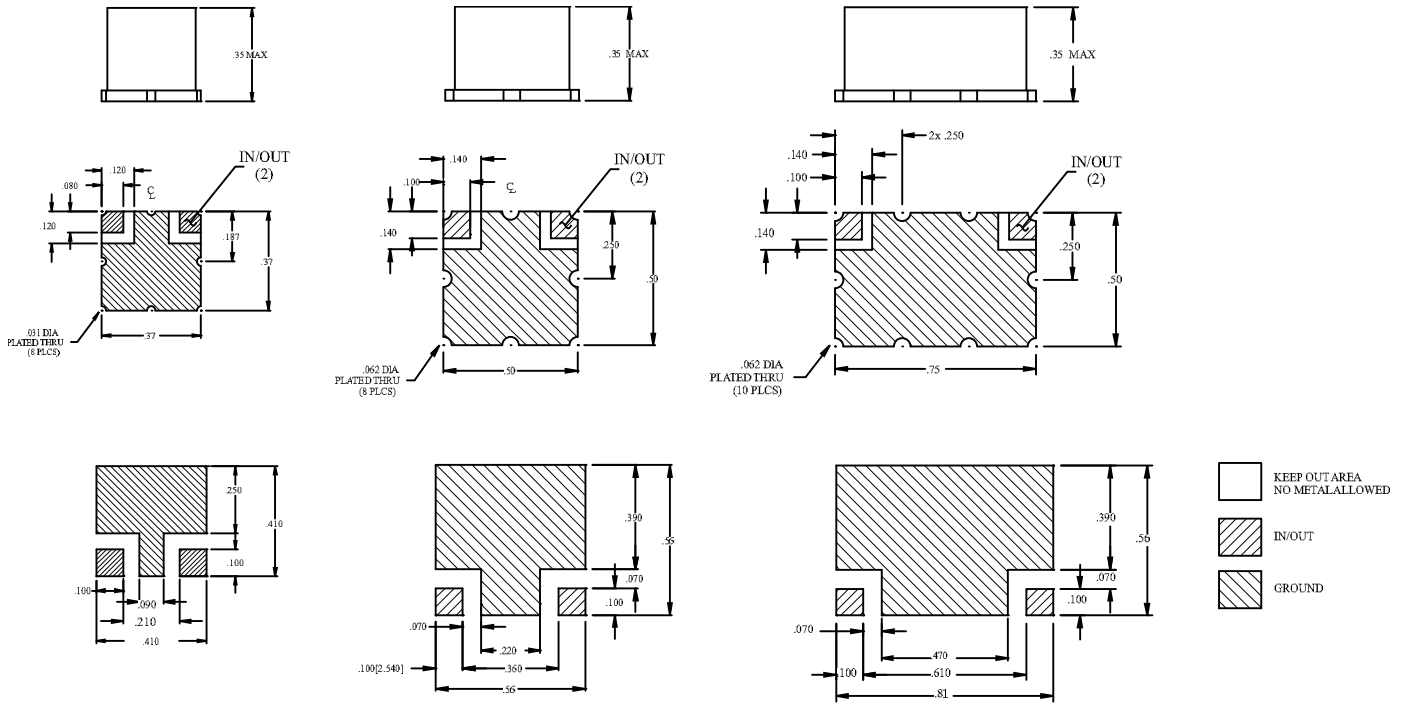
Example:

A 3 section HMS with a cut-off frequency of 500 MHz would be:

$$0.48 \times 3 = 1.44 + 0.05 = 1.5dB$$

# MECHANICAL SPECIFICATIONS

HMS SERIES



FREQUENCY RANGE	NUMBER OF SECTIONS	W	L	H
1-9.9 MHz	2	0.50	1.00	0.35
	3 to 4	0.50	1.50	0.35
	5 to 6	0.50	2.50	0.35
10-100 MHz	2 to 3	0.50	0.75	0.35
	4 to 5	0.50	1.00	0.35
	6 to 7	0.50	1.50	0.35
101-300 MHz	2 to 3	0.50	0.50	0.35
	4 to 5	0.50	1.00	0.35
	6 to 7	0.50	1.50	0.35
301-1000 MHz	2 to 3	0.50	0.50	0.35
	4 to 5	0.50	0.75	0.35
	6 to 7	0.50	1.00	0.35
1001-3000 MHz	2 to 3	0.37	0.37	0.35
	4 to 5	0.50	0.50	0.35
	6 to 7	0.50	0.75	0.35

For filters over 7 sections - Consult Lark Engineering

The size shown is a standard used by Lark to facilitate low cost, easily reproduced units. Should you require another size, please submit all of your requirements, both electrical and mechanical, to Lark Engineering. This will enable Lark to quote the optimum design for your application.