



emmetts



August 2017
Issue 3

**FREE
MAGAZINE**

Visit www.emmetts.com.au to subscribe

FIELD OF DREAMS



keeping farmers farming since 1957

FOR THE LOVE OF CARROTS

The story of Cocci & Son

Dominic Cocci was kind enough to let the Emmetts Marketing Team film his carrot harvest in May for the most recent TV advertising campaign. After visiting his property, we wanted to know more about his business, about the technology he uses, and about the evolution of his successful carrot business.

Dominic has an Italian heritage; his father, Luigi Cocci, came to Australia in 1924, and settled in the Adelaide Plains. His initial years were spent clearing land in the Yorke Peninsula, working hard to establish himself.

In 1932, Luigi bought a farm in Virginia, South Australia, which Dominic and his son Lewis still operate. Luigi chose Virginia based on several key business indicators: good vegetable growing ground, low salt bore water, access to the Adelaide grey water system, and proximity to the vegetable market.

Dominic was born in Virginia, and following his father's farming foundation, has chosen to remain on the land. Dominic and his wife, Grace,

raised their two children, Margaret and Lewis, on the farm. Today, Dominic continues to operate the farm with his son Lewis, the third generation of Cocci.

How the business has changed over time...

Dominic's father, Luigi, worked the land with a horse and plough. In his early days managing the farm after his father, Dominic produced a range of vegetables including cabbage, onions, lettuce and potatoes. He had a vegetable packing shed on the farm, which employed around 40 to 50 staff. Dominic saw a business opportunity to gain farming efficiencies by specialising in carrots, and outsourced the packing to a washing plant. This transition into specialised production allowed him to operate with just himself and his son, reducing labour costs, time spent managing two enterprises, packing and production.

Commitment to vegetable production...

Dominic says that consistency of production is not an issue on the farm.



With access to a range of water sources, a dry season does not have a dramatic impact and as such, poses little threat to production. It is the consistency of the buyer market that has the greatest impact on his business profitability, an aspect he has little control of. Over the years, he has seen an exceeding amount of pressure on his business, due to the price offered by carrot buyers to carrot producers. "I am a price taker, not price maker".

To remain competitive, Dominic has invested in production automation to streamline their business; this reduces labour costs and ensures profitability,



regardless of the tightening effect on the market price.

Investment in innovation...

One of the biggest changes Dominic and Lewis have made on the farm is to automate the irrigation. In the past, they have had to drag pipes manually and monitor irrigation. The new irrigation system with automated cells, allows for watering with the push of a button, outputting the correct amount of water, at the correct time. It has saved the pair many labour hours, which can now be better utilised in other, more efficient, areas.

The next generation on the farm...

When asked about Lewis' feelings about the farm and his future, it is clear that he derives the same sense of satisfaction as Dominic, that comes from planting a small seed to harvesting a crop. Beyond that, business management and the farming operation decision-making process drive Lewis. He enjoys working with their team of agronomists who provide technical support to inform his farming enterprise.

Equipment preferences...

Both Cocci's love John Deere and have

been purchasing from the Roseworthy branch for decades. In fact, Dominic completed his interview whilst working from the comfort of his 8360 tractor, which they recently purchased from the Emmetts Roseworthy branch.

The Coccis imported their carrot harvester from Belgium, and the power hoes and rotatory harrows are manufactured in Italy.

What's next...

On the horizon for the Coccis is a plan to export their carrots. "We are good at growing carrots and we grow lots of them." Dominic cites that Australia is known internationally as being clean and green, qualities that are respected and in demand. They feel confident that the export market for carrots is there. However finding consistency in the world market is difficult. "If you can't deliver, you lose the contract."

Autonomous tractors and controlled traffic are in the pipeline for the Cocci & Son enterprise. They are currently transitioning into controlled traffic, and are slowly changing all of their machines over. The benefit of reduced soil compaction is a definite draw.



VERTICAL FARMING

The presentation by Henry Gordon-Smith at the Hort Connections Conference in Adelaide in May 2017, revealed the possibility of growth from vertical farming is likely to be primarily in nursery/seedling production, micro greens, lettuces and herbs. It will not be an immediate replacement to current outdoor vegetable production.

In large populated cities, vertical farming has been a viable production option to provide high end, safe, and consistent produce for restaurants and markets. The consumer benefit being marketed currently is lower food miles, nutritional security, water scarcity, product quality and safety (which is

not as much an issue in Australia as it is internationally) and the decreasing workforce available to work in food production in rural areas. Looking at the market drivers presented, it does warrant a conversation.

A great point that Henry made was that vertical farming may be a way to engage young urban residents in agriculture.

If you interested in the idea of vertical farming, the presenter at Hort Connections, Henry Gordon-Smith has a blog called **Agriitecture**.

Images source: www.agriitecture.com



Mow better



- D105 \$2,990
- D110 \$3,390
- D125 \$3,850
- D130 \$4,350
- D140 \$4,820

Conditions Apply. Prices are inclusive of GST and valid until August 31, 2017. Every effort is made to ensure details are correct at time of printing. Attachments shown may not be included in price.

*The engine horsepower and torque information are provided by the engine manufacturer to be used for comparison purposes only. Actual operating horsepower and torque will be less. Refer to the engine manufacturer's web site for additional information.



The 100 Series Ride-on Mowers are the ideal choice. With powerful engines ranging from 13-16 kW (17-22 hp)[†] and an array of available attachments, the John Deere 100 Series range is both powerful and versatile.

IN STOCK NOW!



- 3320 Paralink Hoe Drill
- 3720 Disc Drill
- 8910 Cultivator
- 5810 Air Hoe Drill
- Air Seeders:
- 6280 • L6450
- 6350 • L6550
- 6450 • L7550



Buy your 2018 Bourgault seeding equipment at Emmetts now to gain the early order discount.

BOURGAULT CORPORATE MOTTO
Pursuing Perfection.

MISSION STATEMENT
To design, manufacture and distribute the highest quality, most durable and reliable farm equipment in the world, that is affordable and meets or exceeds the expectations of our most demanding customers.

THE NEW GOLDACRES G8 SPRAYERS

When Goldacres designers and engineers set out to develop the G8 Super Cruiser they knew that a simple cut and shut approach would not deliver the desired results.

The Super Cruiser is a clean sheet design, drawing on proven elements from the successful Crop Cruiser range, yet centred around an 8000L main tank. The final product is uncompromising in terms of strength, performance, weight balance, efficiency, stability, visibility, styling, comfort and functionality.

The cabin is mounted behind the front axle to give a naturally superior ride due to reduced vertical movement. In addition, the suspended cabin, air seat and five link airbag suspension system give the operator a smooth ride. The main tank is strategically located between the front and rear axles, in conjunction with the boom, cabin and engine drive line positioning delivers a sprayer with an almost perfect 50/50 weight split. This reduces ground compaction by evenly distributing the weight across all four tyres.



- 1. Cruise Set / Increase
- 2. Cruise Resume / Decrease
- 3. Dual Tilt Up
- 4. Boom Master On / Off
- 5. Tilt Right Up, Tilt Left up, Tilt Right Down, Tilt Left Down
- 6. Boom Lift, Left Fence Nozzle, Right Fence Nozzle, Boom Lower
- 7. GPS Auto Steer
- 8. Dual Tilt Up (Behind)
- 9. Dual Tilt Down (Behind)

The new G-Motion™ handle literally puts the sprayer control into the palm of your hand. Functions such as individual boom wing tilt, dual boom wing tilt, main boom lift/lower, fence line L/R, auto steer cancel/resume,

cruise control set/resume and increase/decrease, master spray on/off mean all spraying operations can be done without moving your hand from the G-Motion™ handle.

More than ever before, every dollar counts. Today's farmer must evaluate capital equipment purchases carefully to ensure that the return on investment is maximised. With all the models and options available today the choice has never been greater, or harder. Look past the sticker price of the initial purchase, dig a little deeper and substantial variations in sprayer design can make all the difference.

The Goldacres Super Cruiser mechanical drive line system sets it apart from its hydrostatic drive competitors.



There are numerous benefits with a mechanical drive sprayer, such as less maintenance costs, less noise, significant fuel reduction, less heat generated, lower engine rpm, lower horsepower required, more torque at the wheels and longer component life. These all equate to substantially lower operating costs. Reports back from owners state that the Goldacres Super Cruiser can use up to a third of the fuel than some hydrostatic drive sprayers in the same situation.

TriTech V Series booms - The new range is designed for operators who demand the utmost performance, reliability and control. Time and time again the TriTech boom has been named No.1 for boom stability*, which at the end of the day, results in a superior spray result.

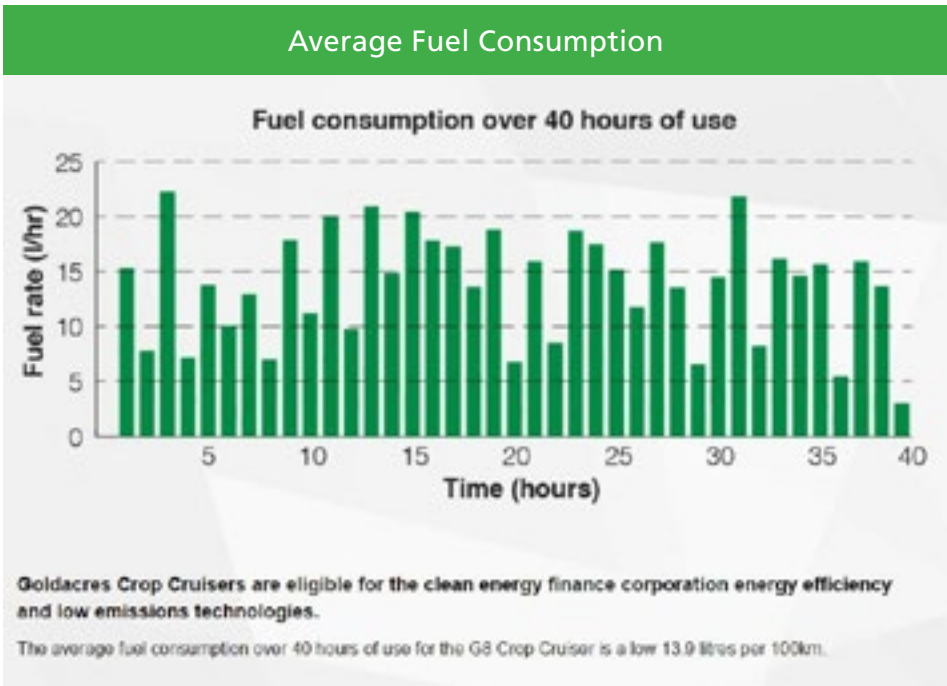
Features such as hydraulic yaw which precisely controls the forwards and backwards movement of the boom wings to minimise the under and over applying of chemical is now standard on all widths. Hydraulic outer wing fold with dampened over centre spring break back maintains perfect outer to inner boom alignment, plus with the added safety feature of a break back mechanism. The strategically placed centre section suspension links help isolate the sprayer chassis movement over rough terrain. Combined with the tuned damping characteristics allows precise roll control enabling an optimal and consistent nozzle height to be maintained, even without the use of electronic height control systems**.

All TriTech booms are constructed using lightweight trussing techniques, which allows for a stronger design without weight, the enemy of boom agility.



*Kondinin group's Farming Ahead magazine 2012 and 2014
**Height control systems may be required in some extreme situations

To access the brochure, visit www.goldacres.com.au/brochure/g8/g8-brochure.html
Specifications: www.goldacres.com.au/g8#specifications
Content from Goldacres website www.goldacres.com.au/g8



Limited edition Prairie Pro

with up to \$15,000 in factory bonuses

Spray like a Pro

GOLDACRES

Australia's World Class Sprayers

goldacres.com.au

EMMETTS EXCLUSIVE

LIMITED MACHINES AVAILABLE - ORDER NOW FOR YOUR CHOICE OF DELIVERY TIME

STANDARD FEATURES INCLUDED

- Tank sizes 6500 / 7500 / 8500L
- 36.5m TriTech boom
- 3TS RapidFire and RapidFlow 250mm spacing
- Dual sided solenoid fence line nozzles
- Boom plumbed in 7 sections
- Individual boom wing tilt
- Airbag suspension
- Standard axle width: 6500L 2.1 metre - 7500 / 8500L 2.2 metre
- Tyres 20.8 x 42
- Induction hopper – 60L
- ISO BUS controller system
- 260 l/min hydraulic drive pump (6500L model)
- 300 l/min hydraulic drive pump (7500 / 8500L model)

A DEDICATION TO SOIL HEALTH AND INNOVATION...

Colin as a viticulturist, and Kelvin as an organic vegetable and stone fruit producer. Together, they tell us about their Swan Hill farm.

Colin and Kelvin are second-generation farmers who run the family farm, just outside of Swan Hill, near Lake Boga Victoria. Kelvin's son Nathan is the third-generation now involved in the farm.

Colin's Role – Viticulture

Colin handles the viticulture on the farm. The family has always had a portion of their land dedicated to vines, but the number of vines increased dramatically in the 1990s, when growth in wine exports led to a significant growth in grape demand.

Innovation keeps Colin's passion for viticulture alive – he is passionate about advancements in soil health, nutrition and new grape varieties. This is clearly evident in Colin's production: with 11 varieties grown commercially and many more currently under testing to determine their suitability as varieties that grow well, and produce flavours that best represent the

important varietal characteristics.

In the 1970s, the introduction of mechanical harvesting made vineyard expansion a viable option. Prior to this, a truckload of grapes could take 18 people a day to pick, which is now completed by machines in as little as an hour. A further result is that grapes can be harvested at night, and the fruit delivered to wineries up to hundreds of miles away while still cool and in excellent condition.

The irrigation system set up by Goulburn Murray Water for the Tresco District in the 1970s secured the Frees' water supply with a low-pressure pipeline system, and was an essential building block to the farm's future success. Previously, the Frees' farm was channel-fed which was less reliable across the farm and resulted in salt issues from a raised water table. Trickle irrigation is the system used today on the viticulture land, and soil health is a key priority for Colin. He finds trickle irrigation works for multiple reasons: water being applied directly under the vines moves salt away from the root zone; and fertiliser is applied through the irrigation system.

Colin Free and Emmett's Rick Austerberry with a new planting of Pinot Grigio. The older vines are Shiraz.



The investment in computer-driven irrigation systems has further increased his efficiencies. He now spends only minutes a day setting irrigation, a task that previously took days to water the block with flood irrigation.

Colin currently utilises soil moisture probes to better identify and analyse where the water is going. This is important to minimise water wastage and best apply the fertigation of nutrients without pushing them past the root zone. Little is known about what is going on under ground-level and Colin hopes to gather knowledge and over time, increase the fertility of the soil and enhance the number of worms and beneficial creatures in the soil.

Colin has chosen to stay with conventional, rather than moving to organic production. He says that there is not enough incentive to move his production towards organic certification at this point in time.

On the topic of price, he is hopeful that the wine industry is coming into a balanced situation, where demand matches supply, and wineries will be

...COLIN & KELVIN FREE

actively looking for extra fruit for the first time in 10 to 12 years.

Colin has dabbled in winemaking with some success, but says that his most recent creation would be an "excellent herbicide" rather than a drinking wine. He maintains that he will keep winemaking as a hobby, rather than a commercial enterprise.

Colin and Kelvin both run John Deere Tractors.

Kelvin's role – Organic Farming

Over on the other side of the farm, we visited Kelvin Free and his wife Deanne, and son Nathan. They produce organic vegetables and stone fruit. On the day that we visited, the packing shed was a hive of activity with packers filling crates of organic broccoli for transport to Hong Kong. Pumpkins were being washed in chlorinated water before being sent off for sale. Kelvin also produces cabbage and cauliflower and was happy to report that demand is higher than supply.

Kelvin completed the process of having his farm certified organic 10 years ago, because it "was the best thing for their crops and soils." 15 years ago, Kelvin started heavily focusing on soil science and began implementing new growing practices, based on his belief that this was the way of the future for sustainable farming and good business enterprise. Taking the final step to become certified organic was a logical conclusion. It was a 3-year process to get certification and Kelvin described it as an "evolving process and mindset. You must continually develop new solutions for nutrient deficiencies that are organic solutions." Being such a recent innovation in farming practice, Kelvin believes that "there are still a lot of gains to be made towards improved yields."

As a result of this transition, Kelvin has seen a big change in the soils in the last 15 years, and has seen an improvement in the ability to maintain plant health through weather extremes. He is also watching to see how the pests have changed; conventional farming pests are no longer an issue, but new pests have arrived which need to be managed.

Kelvin's son, Nathan, has invested in a new John Deere tractor with GPS guidance, which has allowed the Frees to capture economies of scale as they use GPS to set-up beds, and precision plant to maximise the land available.

Nathan has participated in the Nuffield Scholarship Program, enabling him to visit vegetable farms all over the world, and bring home his learnings. One of his significant findings was in composting, from a visit to the team at Midwest Bio Systems in the USA. As a result, the Aeromaster compost turner made by Midwest Bio Systems was purchased for the Free farm seven years ago.

Kelvin sees their farming practice as continually evolving and a learning process, with new innovation and trials constantly being implemented. Evidence-based information is key to supporting their current focus on Integrated Pest Management (IPM) and soil health. Bugs for Bugs in Queensland are one of the many sources of information that the Free's access regularly to inform their farming decision-making. While in the USA, Nathan also visited the Rodale Institute, and as a result, they now diligently stay up to date with it's published research and resources on crops and soil treatments.

Overall, the outlook is extremely positive, and the predominant challenge Kelvin sees for the future is meeting the ever-increasing demand for organic vegetables.



Above: Colin Free (left) and brother Kelvin Free (right)

Below: Kelvin's packing shed preparing for transport to Hong Kong.



Colin Free beside some Cabernet Sauvignon vines.

JOHN DEERE INTRODUCES ITS LARGEST AIR CART EVER - THE NEW C850

A complete air-seeding approach with technology integration improves profitability for broad-acre, small-grain producers.

The cart's 850-bushel carrying capacity is 55 percent greater than previous models and provides an ideal match between cart capacity and in-field performance when appropriately paired with John Deere's 9R Family of Tractors and Air-Drills.

"Producers will see industry-leading total product delivery from AirPower™ 2; standard equipment on the C850," says Ryan Hough, John Deere product marketing manager for seeding. "Integrated tank scales are included and a five-pivot hydraulic wireless conveyance is capable of delivering 100 bushels per minute to fill all tanks from a single positioning of the cart and semi. Every additional bushel of capacity to each tank was considered to ensure the splits were right, allowing more time for seeding."

Hough says this allows producers, using common input rates, to seed 170 acres, yet avoid the additional soil

compaction and decreased flotation that comes with less than optimal tank splits on larger cart offerings.

"The John Deere solution delivers greater uptime and requires less horsepower. The C850 is able to seed a comparable number of acres to carts nearly 100 bushels larger without carrying the added weight of unused product that can result in increased soil compaction and decreased flotation," Hough explains.

The C850 is compatible with the 76-foot John Deere 1870 Air Hoe Drill; and 50- and 60-foot 1890 No-till Air Drills. A 50-bushel mini hopper, and dual rear and single front tyres are included. The new air cart can also be equipped with additional features that include AirPower™ 2; ActiveCal™, Acres Remaining, Section Command™ and Hydraulic Wireless Conveyance. "These options help producers finish more work in less time," Hough says.

Calibration on the C850 is faster than ever and can be done from a robust display mounted to the cart. For those who want to calibrate from the comfort of the tractor cab, ActiveCal™ allows in-field calibration while

seeding. Air-tank pressure can also be monitored from inside the tractor cab.

"The heavy-duty frame is built for years of use, and stainless steel primaries were used to reduce corrosion and wear," Hough adds.

The single-lid per tank design provides a generous opening for easy access and filling. Lids are flush across the top and when opened, slide along the contour of the tank to remain out of the way while filling. Hough says this prevents the cart's lids from blowing closed in the wind or from blocking conveyor access to the tank opening.

Equipped with an integrated camera wiring harness, standard C850 models come from the factory camera ready. Factory-installed mounts and connections are located at the rear of the cart and inside each tank for seamless installation. "The camera harness is compatible with CabCAM™ and Voyager cameras," Hough says.

Top platform railings on the C850 can be quickly folded down to a height of 13.5 feet with the pull of a pin. The lower platform railings can also be unpinned and removed when transferring seed from the back of a truck or when loading from a pallet and loader.

Optional SectionCommand can be ordered with the C850 to reduce seed and fertilizer inputs while improving even emergence and crop development.

All content including text and photo from https://www.deere.com/en_US/corporate/our_company/news_and_media/press_releases/2017/agriculture/2017feb15_C850AirCart.page



CHRIS DENT

Identified by the industry as a future leader in Australian Viticulture

We visited Chris on his farm at Mystic Park Victoria, just outside of Swan Hill, to see how his new 6120R John Deere tractor is working, and to talk to him about his farm.

It was just on fifty years ago, when Chris' parents purchased land from previous Prime Minister, John Gorton, and started a vineyard. At the time, Mystic Park was a citrus farm, and over time they transitioned out of citrus into wine grape production. Chris' parents were friends with the Brown family, of Brown Brothers Pty Ltd, who purchased land next door to Mystic Park, to spread their risk of extreme weather events at their farm base in Milawa, King Valley. The Dents have been selling wine grapes to Brown Brothers ever since.

Over time, the Dents have transitioned production to become 100% wine grapes, and are currently planting another 12 hectares. They have 12 varieties including Chardonnay, Cab Sav, Pinot Noir, Durif, and Gordo – a grape that goes into the Brown Brothers Moscato products. Chris sells 1500 tonnes a year from the Mystic Park property. The business has gone through tough times with the glut in supply over the last decade, but they are preparing for the next increase in demand and have built resilience throughout their wine grape journey.

Chris has been selected by Wine Australia to participate in the Future Leaders Program with 15 other young wine grape growers from across the country. It is an intense program run between June and October 2017. The benefit for the participants are many - networking, learning from peers, talking through production, market and trade issues as well as staying abreast of general industry challenges and opportunities. It is a way to share learnings from those that have adopted new innovations, new varieties, and new technology, to gain efficiencies. The other benefit that Chris acknowledges is gaining a broader perspective and network, and sees opportunity beyond his farm at Mystic Park to the greater Australian Wine Industry.

The challenges that Chris faces on the farm are water usage, electricity costs and climate variability. He irrigates out of Kangaroo Lake and his system is automated for night watering, to reduce evaporation and to take advantage of off-peak power rates.

Chris' next investment for the farm will be Precision Ag with the addition of guidance and auto steer. New vineyards are surveyed prior to establishment for his auto steer plans, with 70% of the farm having been planted this way. Chris stated that



driving between the rows involves more than steering, and he enjoys surveying the vines from the cab of his new 6120R John Deere. Having said that, he wouldn't resist autonomous tractors if that were where technology evolved.

Chris has further plans for yield mapping and precision viticulture. Currently, fertiliser goes into the irrigation lines, so variable rate technology may need to be adjusted further to suit this farming system.

Chris believes that the vineyard thrives as a result of the application of his knowledge, coupled with being hands-on with farming production, as it allows him to make and implement a sound farm management plan.



Technozzlegy

[tek-noz'-uhl-jee]

Improve plant health with spot-on coverage from every angle

Pre- and Post-Emerge Fertiliser

Wide Angle, Drift Reducing

Six Stream



High-Flow

- ✓ Wide 140-degree, extremely coarse, fan spray pattern maximises uniformity and consistency on wide or narrow spacing for pre-plant

Straight Stream Ceramic

- ✓ Six streams evenly distribute fertiliser
- ✓ Reduced atomisation limits leaf burn/scorching

Ultra Low-Drift

- ✓ Patented venturi technology creates air-filled droplets in a unique, thick pattern to greatly reduce drift

Post-Emerge Plant Health

Enhanced Coverage

Enhanced Coverage, Air Induction



Guardian™ Air Twin

- ✓ Ideal for high-coverage application of post-emerge plant health protectants

Guardian

- ✓ Good for application of post-emerge plant health protectants

Low-Drift Air

- ✓ Ideal for on-target application of post-emerge plant health protectants

Targeted spraying yields greater plant health

Herbicide resistance is a big issue these days. And while we can't help you make decisions about chemicals or farm practices, we can offer you nozzles engineered for pinpoint accuracy thanks to Technozzlegy. So when you spray, you reach the exact part of the plant you're aiming for — minimising weeds, insects and fungus while maximising nutrients.

Let us help you take the guesswork out of nozzle selection. Visit Emmetts for more details.

JohnDeere.com.au/NozzleSelector
JohnDeere.com.au/Technozzlegy



John Deere OEM Filters

1 Hydraulic Filter

RE174130
8100, 8110, 8200, 8210
8300, 8310, 8400, 8410

2 Cab Recirculating Air Filter

R120501 (-012539)
RE70742 (012540-1)
8100, 8200, 8300, 8400
RE187966
8110, 8210, 8310, 8410

3 Primary and Secondary Engine Air Filters

Primary — RE51629
Secondary — RE51630
8100, 8110, 8200, 8210
8300, 8310, 8400, 8410

4 Cab Fresh Air Filter

Standard — R119168
Activated Carbon — RE219782
8100, 8110, 8200, 8210
8300, 8310, 8400, 8410

5 Fuel Filter

AR86745
8100, 8110, 8200, 8210
8300, 8310, 8400, 8410

6 Engine Oil Filter

D2101880
8100, 8110, 8200, 8210
8300, 8310, 8400, 8410

2017 PARTS WINTER CATALOGUE OUT NOW

www.deere.com.au



John Deere Oil Filters. They're just better.

Don't trust your equipment to anyone else. Insist on genuine John Deere Oil Filters.

When it comes to oil, sludge is the number one enemy, leading to plugged filters and engine wear.

That's why John Deere Oil Filters are specifically designed for more dust and sludge holding capacity.

Matched to your machine for optimised oil flow, all genuine John Deere Oil Filters are tested to meet or exceed original John Deere specifications.



PRECISION VITICULTURE NURSERY OPERATIONS

Written by Richard Sawyer

Following on from our article in the last issue of Field of Dreams covering the initial start up in the vine grafts, we have now completed all the operations for the season.

To recap, we were asked to look into setting up an autosteer and documentation system for all the operations during the vine graft growing season. This initially seemed like a simple project, however when presented with a 6330 tractor which was not Autosteer or Greenstar ready in an area with no RTK coverage and a high accuracy requirement, the job became a little more tricky. In addition to this, the planting and harvesting operations were around the 0.5km/h speed.



An ATU, Star Fire 6000 on SF3, harness and 2630 screen was installed to give us the accuracy, documentation and guidance we needed. However, due to the tractor not being Greenstar ready, we were unable to obtain performance monitor information in linear meters covered, and at 0.5km/h the steering cut out!

Needless to say, the frustration started both with the customer and ourselves, thinking that the system wouldn't service the customer's requirements and would need to be removed. However, following numerous visits by Emmetts staff and John Deere solutions specialist Lance Dickeson, we installed an MTG to remotely see what was going on and for data to be sent directly to Operations Centre. The team on the property persevered, determined to make it work despite the issues.



The slow speed issue at planting continued to pose problems at harvest, but the operators found that following the light bar guidance when traveling below this speed was still simpler and more accurate than their previous system of following pegs at planting.

The greater accuracy of the planting resulted in each following operation being simpler and more accurate, enabling graft loss at harvest to be reduced. The solution to slow speed is a longer term fix which is being addressed; once we have the ability to auto steer below 0.5km/h we will have a system that fully meets the customer's requirements.



The operators found that when using the technology to mark out new blocks for sprinkler installation with the SF3 signal, it reduced the number of people needed to peg out and sped the operation up considerably with greater accuracy. The next step is to train the operators on the full capabilities for the system. This will then enable them to utilise its functions fully within their operation,



ensuring the system becomes an integral part of the equipment on the property.

As we look at integrating the ATU, Star Fire 6000 and 2630 screen systems into niche operations like this, the greater importance we see on obtaining a positive return on investment. It is too easy to spend vital capital on ag management equipment which does not meet expectations. This results in many becoming sceptical of the technology mainly due to poor set up, lack of support or mis-sold expectations. In this instance, the perseverance of the operators and their confidence in our support, both on the farm and over the phone has ensured a positive outcome.

Although we still have a bit of work to do to make it perfect, the system is simplifying operations in the way it was designed to and resulting in reduced losses of up to 15%.

Please contact the Emmetts Precision Ag Team if you are looking at utilising AMS equipment in your operation, or have AMS equipment which you feel is not meeting your expectations.

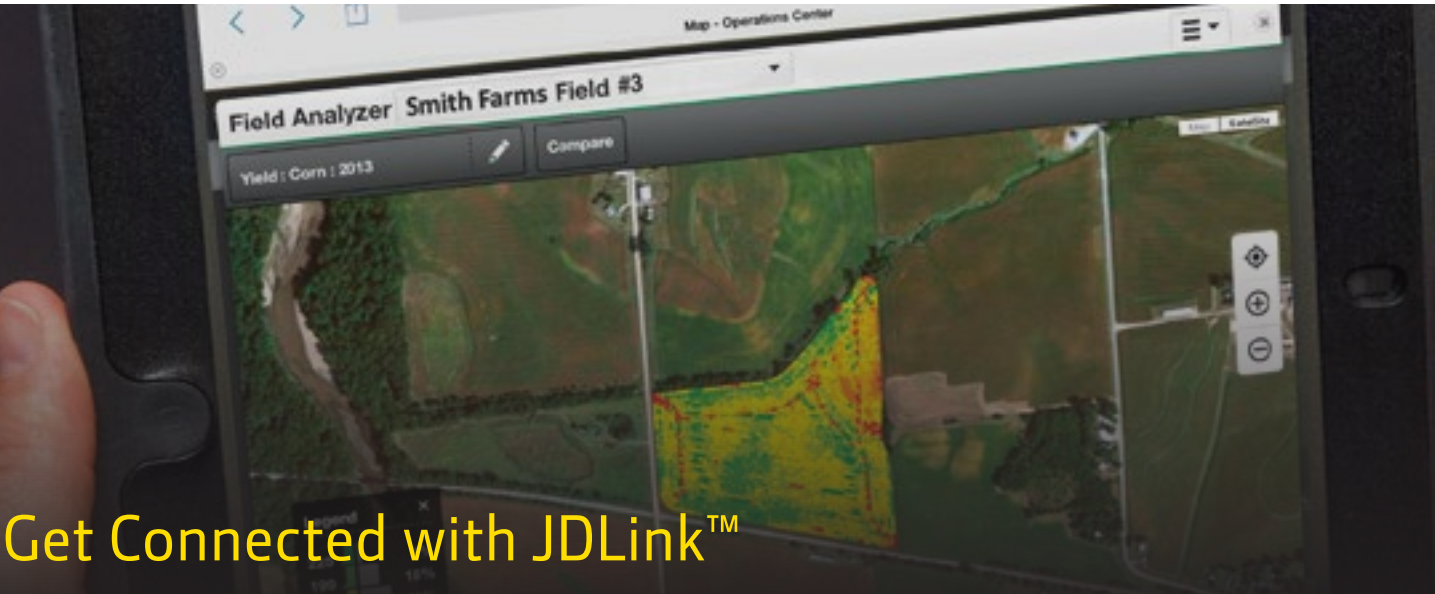
www.agreedecisionag.com.au

PRECISION AGRICULTURE SUPPORT PACKAGES

Emmetts Precision Ag Solutions

Select Plus	\$385 p/a +GST
<ul style="list-style-type: none">• 1800-Emmetts phone support (Business hours Mon-Fri 8am-5pm. Peak periods* Mon-Sun 8am-7pm)• Code identification, diagnostics and support via phone• One free in-branch software update to receiver and screen• One free admission to Emmetts Training Course (e.g. Seeder/Harvester)• One hour of in-branch PC support for MyJohnDeere, Operations Centre and Apex software• Optional access 24/7 to John Deere Stellar Support at discounted rates	
Premium Plus	\$585 p/a +GST
<ul style="list-style-type: none">• All the benefits and inclusions of a Select Plus package, plus:• Support via Service Advisor Remote and Remote Display Access (If machine capable. Machines must be fitted with a 2630 screen and be JDLink capable, with a current JDLink Connect subscription)• Additional in-branch software updates to receiver and screen (total 2)	
Ultimate Plus	\$985 p/a +GST
<ul style="list-style-type: none">• All the benefits and inclusions of a Premium Plus package, plus:• Emmetts full machine code and alert monitoring via JDLink*	
John Deere 24/7 Stellar Support Phone Service*	\$215 p/a +GST
For customers requiring 24/7 phone support, a current subscription to the Precision Ag. Customer Contact Centre is required. This allows unlimited access to the John Deere Stellar Support Customer Contact Centre for all Precision Ag related issues. This is offered at a significantly discounted cost to Emmetts customers who have a current service agreement (when purchased with an Emmetts Support Agreement)	
Pay As You Go On Farm Support	POA
For customers that do not require a continuous support agreement, a Pay As You Go option is available with Precision Ag Support.	

*Peak periods (season dependent) April - June / November - December.
On-Farm Support and Support / Service outside of selected service agreement will be charged at current workshop labour rates.



Get Connected with JDLink™

Stay up to speed on your entire fleet with JDLink-embedded machine kits. JDLink connects you to your equipment more than ever before by granting you instant access to machine information like location, machine hours and alerts, leaving you in control to increase machine productivity.

You'll be informed about machine logistics and maintenance schedules through the

MyJohnDeere Operations Center. With JDLink Connect you get useful tools such as remote display access, location history, alert monitoring and wireless data transfer — so you can stay as productive and profitable as possible.

Talk to Emmetts today about the right kit for your machine and get the information you need now.

DJI DRONES

available at



Mavic Pro

Forward Obstacle Sensing System
27 min Flight Time | 4K Video
12MP Camera | Compact and Lightweight

\$2199.00 (incl GST)

Bundle includes: Shoulder Bag, 2x Extra Batteries, Charging Hub, Power Bank Adapter, Car Charger & Extra Propellers



Phantom 4

Forward Obstacle Sensing System
Active Track Mode | 28 min Flight Time per Battery
4K Video | 12MP Camera | 3500m Range

\$2600.00 (incl GST)

Bundle includes: 2x Extra Batteries & Charging Hub (valued at \$737)

QUANTUM SOLUTION FOR TALL TREE GROWERS

Article supplied by
Croplands Equipment Pty. Ltd.

Croplands dealer Tableland Pumps and Pipes in Atherton recently delivered two modified Quantum Mist Ultra Tower sprayers in the Atherton Tableland region of far north Queensland.

The two machines are identical and custom built for two mates and fellow orchardists in the region - Remo Terranova of Terranova Farms and Sony Koci of Koci Avocados.

Remo grows mangoes, citrus and avocados and Sony primarily grows avocados, though both growers were experiencing problems in achieving efficacy at the tops of their trees. They consider Croplands Quantum Mist the "Rolls Royce" of sprayers and so consulted with Croplands to have a pair of sprayers built to suit their needs.

Sony designed the modifications he wanted and the Croplands R&D team went to work to create this new tall tree sprayer. The mast of the standard Quantum Mist Ultra Tower has been extended by a metre to stand 6m tall.

The custom built machines also have five fan heads on each side, instead of the standard Ultra Tower's four on each side. The bottom fan is mounted low to enable to the sprayer to blow air up the skirt of the tree and is fitted with leaf guards to prevent blockages. The next two fans from the bottom are angled upwards to lift the canopy and the top two fans can be adjusted to blow down and create converging air currents resulting in turbulent air. This turbulent air is laden with small chemical droplets and provides efficient coverage at all angles.

This custom configuration with 10 heads and extra height is predicted to be very popular with the other orchardists.



Above: Pictured from left: Rob Graham (Croplands' Area Sales Manager), Luke Cannon (Manager of Tableland Pumps and Pipes Atherton), Remo Terranova (machine owner) and Brendon Weare (son in law of machine owner, Sony Koci).

Left: The modified Quantum Mist Ultra Tower sprayer.

For further information on Croplands equipment contact:
Emmetts Roseworthy: 08 8524 8131
Emmetts Renmark: 08 8586 3688



CROPLANDS

3.9%
FINANCE OFFER
NOW AVAILABLE*

*Terms and conditions apply

QUANTUM MIST THE ULTIMATE COVERAGE IN GRAPES

» **TURBULENT, TARGETED AIR**

» **SUPERIOR COVERAGE**

» **DRIFT REDUCTION**

» **REDUCED WATER RATES**

Don't take any chances with your grapes – the Quantum Mist is used by some of Australia and New Zealand's biggest grape growers. It is unmatched in viticulture application worldwide for coverage, both on the canopy leaves and the fruit beneath. With its high volume, turbulent, directional air – **the proof is in the harvest.**

NYREX CHASER BIN RANGE

NYREX
MANUFACTURED BY TRUFAB GLOBAL

The NYREX range of Chaser Bins by Trufab and GrainKing are available at Emmetts Victorian branches now! The bins come standard with an extensive list of features and benefits that Trufab has never offered before.

The Nyrex Chaser Bins by Trufab and GrainKing come in a range of sizes, ranging from 28,000 to 46,000 litres.

NYREX Chaser Bins come standard with features that make harvest efficient, safe, convenient, and operator friendly. All bins are equipped as standard with heavy duty braked axles, because reliability and safety are a top priority. The Nyrex chaser bins have been engineered in a modular design, allowing easier access for transport both within Australia, and across the globe. This modular system allows for simple maintenance and upkeep of your Chaser Bin over the years. As your harvest program increases you will now have the option of increasing the capacity of your bin.



Every Nyrex® Chaser Bin has:

- Unique braked axle for superior operator safety
- Low centre of gravity for unparalleled stability
- High capacity hydraulic folding auger
- Hydraulic jack stand for fast and efficient hook up
- Height adjustable towing tongue for improved balance & reduced tractor drawbar load
- Heavy duty roll over tarp for protecting load contents
- Full length floor doors for quick and easy bin clean out
- Floating cushioned drawbar for a smoother ride
- Light kit & camera kit for improved safety and efficiency
- Adjustable auger covers for greater control over the discharge speed
- Electric adjustable chute making Nyrex exceptionally user friendly
- Manufactured with high tensile steel and huckbolts ensuring a longer life for your bin

STANDARD FEATURES	28,000L	37,000L	46,000L
CUBIC CAPACITY	28m ²	37M ²	47M ²
OVERALL LENGTH	7,290mm	9,545mm	11,175 mm
OVERALL WIDTH	3,500mm	3,500mm	3,500mm
OVERALL HEIGHT	3,440mm	3,440mm	3,440mm
AUGER SIZE	22"	22"	22"
AXLE	2.75 M	2.75 M	2.75 M
DRIVE ON DISCHARGE AUGER	PTO	PTO	PTO
DRIVE ON SWEEP AUGER	Hydraulic	Hydraulic	Hydraulic
DISCHARGE RATE	16 t/pm	16 t/pm	16 t/pm

* Suspended self steering tandem optional ** Floatation tyres optional
All content from Nyrex brochures, to download visit www.nyrex.com.au



emmetts
TRUFAB
GLOBAL
GRAINKING



JOHN DEERE

TOYS

*Stock will vary between each store

AVAILABLE AT
emmetts



**1:16 Replica
8130 Tractor \$149.95**



**1:16 Replica
4255 Tractor \$159.95**



**1:16 Replica
4440 Tractor \$129.95**



**1:32 Replica
4440 Tractor \$34.95**



**1:32 Replica
8400 Tractor \$59.95**



**1:32 Replica
9570RX Tractor \$89.95**



**6V Battery
Operated Gator \$299.95**

Working headlights, MP3 jack with powered speakers, DirectDrive non slip tyre traction strips, 4 KPH, forward/reverse, single rider, 6 volt rechargeable battery and charger included. Ages 3+. Weight capacity 34kg. BONUS FEATURES: 2 detachable water bazookas!



**1:32 Peterbilt 367
Straight Truck \$69.95**

With grain box, grain bin and grain auger. Durable plastic construction. Truck features opening doors, removable lid, and working grain door. Age grade 3+.



**1:16 S670 Combine
& 630R Grain Head \$139.95**

Lights & sounds, steerable rear wheels, removable front outside dual wheels, right side rear body panel opens, oscillating rear axle, movable mirrors, detachable grain head, feeder housing raises and lowers. Auger and reel on grain head rotate when pushing combine forward or backward.

The new John Deere 2017 Toys brochure is out now and available at your local Emmetts branch.

YORKE PENINSULA FIELD DAYS

Australia's oldest Field Days event is back this year, and Emmetts will be there along with some exciting new machinery and staff.

The Emmetts site (Site #165) will feature the new John Deere 5R Tractor. Tractors on display will range from Series 1 compacts to the 9RX. Other equipment on display will include; seeding and tillage, windrowers, sprayers, hay equipment, harvesters, fronts and Bourgault seeding equipment.

Stop by the site for your chance to win your very own Phantom 3 drone!

Our friendly staff from Roseworthy and Kadina will be on hand to answer any questions you may have. We look forward to seeing you at the Yorke Peninsula Field Days in September!

For more information on this event, visit:
www.ypfielddays.com.au



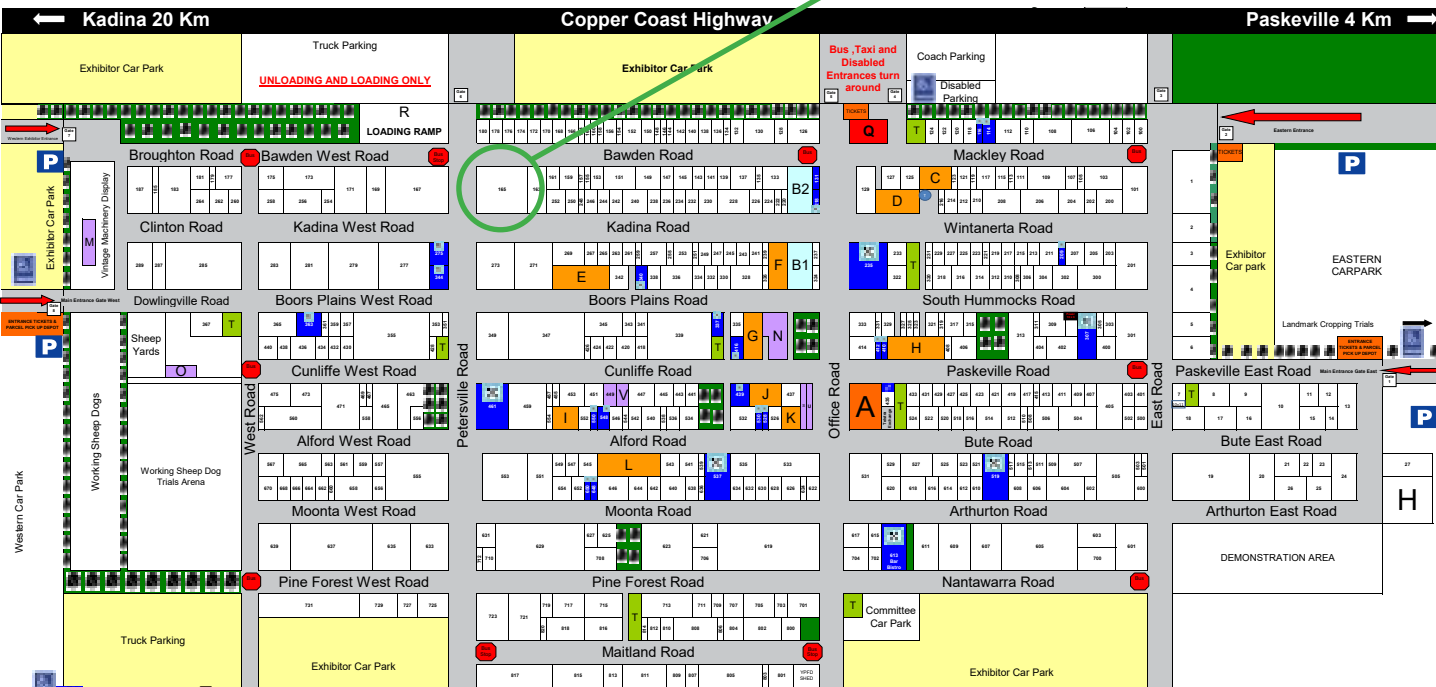
WIN!



NEW! 5R Tractor

Yorke Peninsula Field Days
Paskeville, SA
September 26th, 27th & 28th 2017

EMMETTS STAND #165



Features:

- BaleTrak™ Pro monitor-controller
- MegaWide™ Plus pickup with MegaTough™ pickup teeth
- Exclusive DiamondTough™ belts with plate-type splices
- Driven by Diamond® Chain for superior performance

JOHN DEERE
469 SILAGE SPECIAL
IN STOCK NOW!



2018 CALENDAR

It's nearly that time of year again! We are putting together our 2018 calendar. The Emmetts calendar features photos from our wonderful customers and reaches hundreds of people all over Australia. To the right you can see a few of the 2017 pictures.

If you would like to be part of the 2018 calendar, please email your pictures to:
marketing@emmetts.com.au

Your free 2018 calendar will be available for collection at your local Emmetts branch from December 2017.



T3RRA CUTTA & iGRADE TRAINING

In June 2017, the Emmetts Precision Ag Solutions Team, in conjunction with John Deere and Precision Terrain Solutions, held a training session on John Deere iGrade and PTS T3RRA Cutta software at the Swan Hill branch.



The first day, Emmetts sales staff and technicians focused on features, benefits, theory of operation, best practice, system differences between laser vs GPS install, advanced diagnostics and trouble shooting, and designing land forming solutions utilising T3RRA Cutta advanced software.

The afternoon session put the morning's learnings into action in the field. This consisted of collecting elevation data from the field using two different methods, either utilising the GreenStar system, or via the T3RRA Cutta software, designing the land forming solution and map required, and then putting into action via a specially designed demo trailer.

The second day, customers were invited to attend, with the sessions designed for both operators considering purchasing the software, or owners of iGrade or T3RRA Cutta software who wanted to use it to its full potential. Presenters Lance Dickeson from John Deere ISG and Sean McColley from Precision Terrain Solutions conducted the

morning sessions, while Emmett's Precision Ag Solutions Team assisted with the afternoon practical sessions.

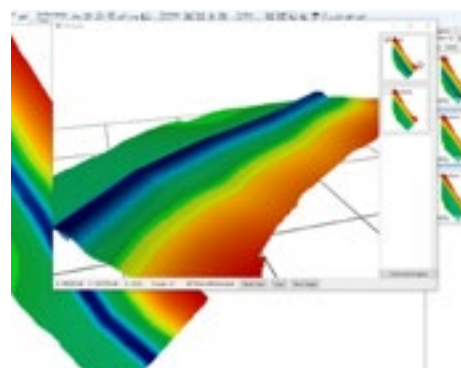
Special thanks to Lance and Sean, for assisting and putting the training together, and Chris Foott for the use of his tractor in the practical sessions over the two days.

What is iGrade?

iGrade software by John Deere allows automated water management and offers an advanced approach to levelling, ditching, grading, and plane generation. This application automates the hydraulic commands of a scraper blade or pan, making water management practices hassle-free.

What is T3RRA Cutta?

T3RRA Cutta works with iGrade to allow the user to sculpt their farm terrain to their exact specifications. Used on a tablet console, the wizard based program guides the user through the landforming process, from elevation collection to design implementation. As well as best-fit and multi-fit optimized surfaces, T3RRA Cutta can build drains, roads



and levee's all in-cab. Guidance lines can be created and exported directly to the GreenStar display.

For further information on iGrade or T3RRA Cutta, contact the Emmetts Precision Ag Solutions team on 1800 366 388.



JOIN THE TEAM!

Written by Steve King
Group Human Resources Manager
hr@emmetts.com.au
Ph: 0458 080 203

Come and join us! Being part of the Emmetts team is a privilege. It is like having an extended family. You will always have someone to call on for help and support, to share and celebrate success and to learn with when overcoming a challenge.

We offer a wide variety of employment opportunities in the agricultural sector and know that the success of our business relies on the great work that our people do. We are proud of our team and the dedication they show to keeping farmers farming.

Emmetts operates over a large and diverse area in Southern Australia.

We have 10 branch locations in South Australia and Victoria and, as a growing company, we are always searching for dedicated individuals who can make an impact through personable customer service skills, individual effort, functional expertise and teamwork.

If you are excited about agricultural equipment and the agriculture industry, we are excited about talking to you. With over 60 years in the business, we have the staying power to provide you with the opportunity for a long term diverse career.

Like the diverse range of equipment we sell and service, Emmetts has many parts. We offer rewarding careers in Service, Sales, Parts, Retail, Management, Finance, Accounting, IT, Marketing, Precision Ag and

Agronomy. From the service shops to the administrative offices, our employees strive to create an environment that is positive and fulfilling for everyone.

With over 200 employees you will always have the support you need to succeed in your role. When you join our team, you will work closely with professionals who are passionate about what they do and about supporting you to succeed.

A position with Emmetts is the start of a fantastic career opportunity with a leading ag dealer group. Call us to talk through how a role with us can support achieving your career goals.

To view all current vacancies, visit www.emmetts.com.au

WORK EXPERIENCE

Written by Megan Lannan, Murray Bridge, SA

My name is Megan Lannan and I am a media student from the University of Adelaide completing my media industry placement with the head office team at Emmetts.

I have assisted the marketing and design team in multiple video editing and design

projects which has given me a look into what a career in marketing and design could be like for me.

I have had the opportunity to learn more about Emmetts and what they do, as well as meet some of the people who make Emmetts a great success.





USED HARVESTERS

For current available stock, visit www.emmetts.com.au



John Deere S680
Year: 2012 - 2014
Hrs: 895 - 1745
Price: \$407,000 - \$489,500



John Deere S670
Year: 2012 - 2015
Hrs: 1400 - 2150
Price: \$286,000 - \$418,000



Agco Gleaner S77
Year: 2013
Hrs: 1300
Price: \$269,500



John Deere 9770 STS
Year: 2008 - 2009
Hrs: 2210 - 2468
Price: \$264,000 - \$332,750



John Deere 9760 STS
Year: 2003 - 2006
Hrs: 4310 - 5485
Price: \$99,000 - \$127,600



John Deere 9750 STS
Year: 2001
Hrs: 4265
Price: \$88,000



John Deere 9670 STS
Year: 2009
Hrs: 3098
Price: \$220,000



John Deere 9650 STS
Year: 2001 - 2003
Hrs: 4694 - 6494
Price: \$82,500 - \$99,000



John Deere 9600
Year: 1993
Hrs: 5288
Price: \$44,000



John Deere 9500
Year: 1994 - 1996
Hrs: 6418
Price: \$22,000



Case IH 8120
Year: 2011
Hrs: 2498
Price: \$214,500



Case IH 7120
Year: 2011
Hrs: 1585
Price: \$330,000



Case IH 2344
Year: 1999
Hrs: 3171
Price: \$55,000



Case IH 2388
Year: 2001
Hrs: 6400
Price: \$49,500

Terms and conditions apply. Every effort is made to ensure details are correct as of 24/07/17. Prices shown are based on no trade in and inclusive of GST. Attachments included in photos may not be included.

Stock #	Model	Year	Hrs	Branch	Price	Stock #	Model	Year	Hrs	Branch	Price
800864	John Deere S680	2013	1505	Roseworthy	\$456,500	252642	John Deere 9760 STS	2006	4670	Horsham	\$104,500
252645	John Deere S680	2014	895	Horsham	\$489,500	252209	John Deere 9760 STS	2004	5485	Horsham	\$99,000
252621	John Deere S680	2013	1395	Horsham	\$445,500	352295	John Deere 9760 STS	2003	4795	Warracknabeal	\$127,600
352310	John Deere S680	2012		Warracknabeal	\$407,000	252680	John Deere 9750 STS	2001	4265	Horsham	\$88,000
152370	John Deere S680	2013	1729	Rupanyup	\$456,500	800963	John Deere 9670 STS	2009	3098	Renmark	\$220,000
152357	John Deere S680	2013	1745	Rupanyup	\$462,000	152346	John Deere 9650 STS	2001	6494	Rupanyup	\$82,500
800959	John Deere S670	2014	1400	Renmark	\$418,000	152358	John Deere 9650 STS	2001	4694	Rupanyup	\$99,000
252646	John Deere S670	2012	1850	Horsham	\$319,000	352292	John Deere 9650 STS	2003	4997	Warracknabeal	\$88,000
252627	John Deere S670	2015	2150	Horsham	\$297,000	800397	John Deere 9600	1993	5288	Roseworthy	\$44,000
252640	John Deere S670	2014	1550	Horsham	\$291,500	152367	John Deere 9500	1996	6418	Rupanyup	\$22,000
252639	John Deere S670	2014	1650	Horsham	\$286,000	800166	John Deere 9500	1994		Kadina	\$22,000
152335	John Deere S670	2012	2036	Rupanyup	\$308,000	252666	Agco Gleaner S77	2013	1300	Horsham	\$269,500
252652	John Deere 9770 STS	2009	2210	Horsham	\$332,750	451214	Case IH 8120	2011	2498	Swan Hill	\$214,500
800035	John Deere 9770 STS	2009	2468	Roseworthy	\$275,000	352282	Case IH 7120	2011	1585	Warracknabeal	\$330,000
200015	John Deere 9770 STS	2008	2282	Roseworthy	\$264,000	252712	Case IH 2344	1999	3171	Horsham	\$55,000
252664	John Deere 9760 STS	2005	4310	Horsham	\$121,000	451141	Case IH 2388	1999	6400	Swan Hill	\$49,500

Visit www.emmetts.com.au for full machine details

TRACTOR SALE ON NOW!



1023E
1023E Tractor **\$13,699**
Add a Howard HA1400
FEL with 4-in-1 bucket **\$ 6,299**
Total Package **\$19,998**



2025R
2025R Tractor **\$14,999**
Add a Burder 3200 FEL
with 4-in-1 bucket **\$ 6,999**
Total Package **\$21,998**

5055E
5055E Tractor
OOSS 9 speed trans **\$23,999**
Add a Burder 7300
FEL with 4-in-1 bucket **\$13,499**
Total Package **\$37,498**



Conditions apply. Prices include GST and exclude pre-delivery, freight, assembly or dealer charges. Offer available on advertised tractors purchased in Australia, available for Australian residents only. Offer valid until September 30, 2017 or while stocks last. Images shown are for illustrative purposes only.

TRACTORS CURRENTLY IN STOCK...



1 SERIES
1023E - 1025R



2 SERIES
2025R



3 SERIES
3036E - 3045R



4 SERIES
4049M - 4105



5 SERIES
5055E - 5075E



6 SERIES
6100D - 6110R
6125M - 6140M
6155M - 6195M



7 SERIES
7210R



8 SERIES
8245R - 8370RT
8270R - 8345RT
8345R



9 SERIES
9570RX

Terms and conditions apply. Tractors currently in stock as of 31/07/17. Attachments sold separately and may not be in stock. Images shown are for illustrative purposes only.

USED MACHINERY GUIDE



#252580
2013 John Deere
DB60 Row Planter
Horsham **\$308,000**



#252612
2016 John Deere
R990R
Horsham **\$143,000**



#252711
2009 Case IH 4420 SP Sprayer
Horsham **\$269,500**



#252541
2009 John Deere 131
Mower Conditioner
Horsham **\$71,500**



#252617
2009 Krone BP 1290
HDP Square Baler
Horsham **\$68,200**



#207578 *EX DEMO*
2015 Fast 8013N
Nutrient Applicator
Horsham **\$93,500**



#252669
2014 MacDon R85 16'
Mower Conditioner
Horsham **\$53,900**



#252623
2012 MacDon R85 16'
Mower Conditioner
Horsham **\$49,500**



#252715
2008 John Deere
9230 4WD Tractor
Horsham **\$192,500**



#252662
2008 Hardi 5030
Navigator Sprayer
Horsham **\$44,000**



#252547
2011 John Deere 956
Mower Conditioner
Horsham **\$38,500**



#252701
1999 John Deere
7610 MFWD Tractor
Horsham **\$36,300**



#252703
2008 MacDon M150
SP Windrower
Horsham **\$104,500**



#207579 - Horsham *EX DEMO*
2015 Fast 8013N Liquid Nutrient Applicator
\$104,500



#252670
2010 Case DC162
Mower Conditioner
Horsham **\$44,000**



#252672
2010 Horwood
Bagshaw 6000 Air Cart
Horsham **\$53,900**



#252714
1990 Case IH 9130
Steiger 4WD Tractor
Horsham **\$27,500**



#252668
2016 MacDon R116
Mower Conditioner
Horsham **\$66,000**

Terms and conditions apply. Every effort has been made to ensure details are correct as of 4/08/2017. Prices shown are based on no trade in and are inclusive of GST. Attachments in the photos may not be included.

USED MACHINERY GUIDE



#800897
2009 John Deere 4930 Sprayer
Kadina
\$231,000



#252613
2008 Krone BP 1290
HDP Square Baler
Horsham
\$63,800



#800956
1997 Bourgault 8800
Air Seedere
Kadina
\$33,000



#800941
2014 John Deere 1910
Tow Between Cart
Roseworthy
\$71,500



#151020
2005 Goldacres 500L
Prairie Sprayer
Rupanyup
\$49,500



#152328 - Rupanyup
2009 MacDon M150 Windrower
\$121,000



#800951
1996 Case IH 7220
Tractor
Kadina
\$50,600



#800933
2004 John Deere
8120 (available Dec)
Kadina
\$96,800



#800841
2004 John Deere 1820 Air Seeder
Kadina
\$121,000



#152366
2008 Krone BP 1290
HDP Square Baler
Rupanyup
\$77,000



#152341
2004 John Deere
7220 Tractor
Rupanyup
\$77,000



#451447
2004 Morris 8336
Air Cart
Swan Hill
\$66,000



#451440
2014 Lely Splendimo
PC 370 RS
Swan Hill
\$30,250



#800817
2008 SeedHawk
SH1220 Air Seeder
Kadina
\$71,500



#800853
2010 Croplands
Pegasus BT50/30H
Kadina
\$60,500



#800948
2005 John Deere 9220
Tractor (Available Dec)
Kadina
\$132,000



#800913
2016 New Holland
T4.115 Tractor
Parndana
\$77,000



#451437
2009 Goldacres Prairie
Sprayer, 30m Boom
Swan Hill
\$28,600



#451374
Case IH 8220 Trailing
Windrower
Swan Hill
\$13,200



#451418
2004 New Holland
TM190 Tractor
Swan Hill
\$88,000



#451375
2010 New Holland
H8080 Windrower
Swan Hill
\$181,500



#800891
2011 Goldacres 6530 Prairie Evolution Sprayer
Roseworthy
\$82,500



#152333 - Rupanyup *EX DEMO*
2016 Case IH Magnum 250 Tractor
\$255,200



#800955
John Deere 835 Mower Conditioner
Murray Bridge
\$49,500



#800934
2010 John Deere
7930 Tractor
Renmark
\$121,000



#800715
Case IH 627 Baler
Roseworthy
\$11,000



#800929
2004 Hardi 5030
Navigator Boom Spray
Murray Bridge
\$25,300



#352309
2011 Case 225 CVT
Puma FWA Tractor
Warracknabeal
\$170,500



#302548 - Warracknabeal *EX DEMO*
John Deere 1830 Air Hoe Drill
\$164,890

AVAILABLE AT EMMETTS
\$2650+GST



Ti5
 THE RIGHT SIZE
 FOR YOUR BUSINESS

FEATURES

- ▶ 5" colour touch-screen display;
- ▶ Intuitive and built to last;
- ▶ Rugged aluminium case;
- ▶ Mapping functions - import and export maps and boundaries;
- ▶ Operates during day, night and low visibility conditions;
- ▶ Multiple language support;
- ▶ Farming Accuracy: GNSSL1 - GPS/Glonass 10Hz, 28cm GLIDE (pass-to-pass, 15min);
- ▶ Can be assembled on any machine on the market.

OPERATION MODE



A-B Line

A+ Heading

Parallel A-B Curve

Adaptive Curve

Pivot

SPONSORSHIP

Both the Emmetts Company and the Emmetts family are committed to rural Australia. With businesses across South Australia and Victoria we live farming and rural community life. Supporting local business, providing local employment and training opportunities and being active community members is part of Emmetts Company Mission. We are proud to be "keeping farmers farming since 1957," and to be a large employer in rural areas.

As part of our role within these communities we are able to support local groups, clubs and organisations. Here are some of the clubs supported in 2016 / 2017:

Agriculture Kangaroo Island
 Blyth Snowtown Football Club
 Border Districts Football Club
 Border Districts Netball Club
 Broughton / Mundoor FC
 Browns Well Football Club
 Bute Football Club
 Bute Netball Club
 Bute Basketball Club
 Bute Bowling Club
 Bute Golf Club
 Bute Golf Club Farmers Day
 Charlton Football Club
 Cuisine in the Crop (Donald)
 Dimboola Ski Club
 Donald Football Club
 Donald Show
 Dunmunkle Health Services
 Freeling Football Club
 Hamley Bombers Football Club
 Hummocks Watchman Football Club
 Kadina Netball Club
 Kadina Football Club
 Kadina Golf Club
 Kalkee Football – Under 14s
 Laharum Football and Netball
 Lake Boga Football Netball Club
 Lalbert Football Netball Club
 Lameroo Football & Netball Club
 Lameroo Country Music Festival
 Loxton North Netball Club
 Loxton North Football Club
 Loxton High School Council
 Loxton Tennis Club

Manangatang Cricket Club
 Manangatang Races
 Minyip-Murtoa Football
 Moonta Football Club
 Moulamein Football Club
 Murray Downs Angling Club
 Murrayville Football Club
 Murtoa Golf Club
 Murtoa Big Weekend
 Murtoa Racing Club
 Natimuk Showground Management Committee
 Nyah Nyah West United Football Club
 Parilla Tennis Club
 Paringa Netball – under 21's
 Parndana Golf Club
 Parndana Show Society
 Parndana Sports Club
 Parndana Bowling Club
 Paskeville Football Club
 Paskeville Netball Club
 Paskeville Basketball Club
 Paskeville Bowling Club
 Peake Football Club
 Pinnaroo Football/Netball Club
 Pinnaroo Bowls Club
 Pinnaroo Cricket Club
 Pinnaroo Golf Club
 Pinnaroo District Darts Association
 Pt Broughton Bowling Club
 Quambatook Football Club
 Quambatook Tractor Pull
 Quarter Horse Club
 Ramco Roosters Football Club

Renmark Tennis Club
 Renmark Olympic Soccer Club
 Renmark Bowling Club
 Renmark Rocks ON
 Rovers Junior Footy
 RSMU Football Club
 Rupanyup Barley Banquet
 Rupanyup Football Netball Club
 Rupanyup Bowls Club
 Rupanyup Golf Club
 Rupanyup A&P Society (wood chopping)
 Stawell Turf Club
 Stokes Bay Community Hall
 Swan Hill Kart Club
 Swan Hill Racecourse Bowls Club
 Swan Hill Racecourse Bowls Club
 Swan Hill RSL Cricket Club
 Swan Hill A & P Society Show
 Tooleybuc/Manangatang Football/Netball
 Tooleybuc/Manangatang Cricket Club
 Tyntynder Football Club
 Ultima Football Netball Club
 United Football Club
 Variety Club
 Wakool Golden Hawks Sheep Dog Trials
 Waikerie Football Club
 Walpeup Football Club
 Wallaroo Football Club
 Wallaroo Pistol Club
 Wimmera Machinery Field Days
 Woorinen Football Club Field Days
 Wycheproof Show
 Wycheproof Narraport Football Club



EMMETTS AFTER HOURS SUPPORT

After hours service is available to keep you going during those critical times.

You'll find total support at Emmetts with...

- Factory trained technicians
- Close knit spare parts network
- Precision Ag technologies
- Service ADVISOR diagnostic system
- Infield service support
- Online parts information through www.JDParts.JohnDeere.com

Precision Ag Technical Support - 1800 366 388

Branch	Spare Parts	Service
Horsham	0429 811 555	0429 811 556
Kadina	0427 128 909	0428 859 231
Murray Bridge	0427 884 007	0448 085 147
Parndana	0427 596 073	0427 596 073
Pinnaroo	0448 783 174	0428 105 892
Renmark	0428 863 699	0457 758 342
Roseworthy	0488 195 768	0400 085 080
Rupanyup	0428 855 118	0428 855 096
Swan Hill	0428 332 115	0427 222 562
Warracknabeal	0419 504 283	0428 982 038

SPREAD THE WORD

Vicon RO-EDW GEOspread 1500

Advantages

- Quick and accurate section control, due to the actuators being directly connected to the discharge point.
- Stable disc RPM in combination with discharge point adjustment maintains the spreading pattern (coefficient of variation).
- The small 2 meter sections (max. 24 sections) can be switched inside-out and outside-in to keep overlaps to the minimum.
- Easy operation, no need to step off the tractor to adjust the working width
- 100% ISOBUS compatible for easy operation

Standard Features

- Load cells for on board weighting of product
- Hopper Capacity | up to 3,450 litres
- Filling Height | 110 cm
- Width | 275 cm
- Empty Weight | 665 kg
- Spread Width | 12-45 meters
- Output | 10-320 kg/min



EASY
OPERATION



MEET SOME OF OUR STAFF...



Glenda Smith
Administrator,
Head Office

Glenda has grown up and lived around Horsham her whole life. She has previously worked for local government, and now works in Emmetts Head Office. Among other administration duties, Glenda processes payroll for all branches and coordinates return to work. **Favourite part of the job?** Interacting with the other employees at head office and our other branches.



Clive Wilkie
Sales Representative,
Pinnaroo

Clive joined the Emmetts team in Pinnaroo in June. He moved from Riddells Creek (Vic) to Pinnaroo in 2014 with his wife and son following a decision to purchase 10 acres of land and install a transportable home. The past 3 years have been spent finishing the house, landscaping and planting hundreds of trees. Coming from a commercial building and contracts management background, Clive looks forward to becoming part of the Emmetts team. **Favourite part of the job?** Working with a range of clientele and providing them with a customer experience that will ensure a long lasting relationship.



Kevin Charlton
Deliveries/Assembly,
Horsham

Kevin grew up in Horsham, where he still lives with his wife and children. He has been a valued member of the Emmetts Horsham team for almost 12 years. Amongst other duties, Kevin makes deliveries, assists mechanics in the workshop and assembles machinery. Before starting at Emmetts, he worked as a security guard and

briefly lived in Ballarat. **Favourite part of the job?** Making deliveries and talking to customers.



Jason Green
Workshop Foreman,
Swan Hill

Jason has been with the Swan Hill Service Team for 3 months. His role as Workshop Foreman includes working closely with the Service Manager to manage staff and ensure all tasks are carried out safely. Before this, Jason has lived in the Northern Territory (working as a Maintenance Supervisor for Cooida Lodge in Kakadu National Park), England (working various roles in Mechanics and Transport Management), Scotland and Zimbabwe (his birthplace). He is recently married and now lives in the Swan Hill area with his wife. **Favourite part of the job?** Working with the team at Emmetts Swan Hill.



Hamish Wagenknecht
3rd Year Apprentice,
Warracknabeal

Hamish is a Warracknabeal local, currently completing his 3rd year of a mechanic apprenticeship, and enjoys maintaining machinery, particularly harvesters and tractors. He has been working with Jade McConville for the past year, and is now visiting customers on his own and keeping their machinery in top working condition. Outside of work, Hamish plays hockey with the local team. **Favourite part of the job?** Working on John Deere harvesters and tractors.



Alysha Jolly
Administrator,
Murray Bridge

Alysha grew up in the Murray Bridge area,

and returned after spending 10 years in WA through high school and her early career. She currently lives with her fiancé Tom and their dog Maggie. Alysha looks after the day-to-day admin tasks, sales support, and service administration in Murray Bridge. She has previously worked for Afgri Equipment in Carnamah, WA before she moved back home to SA and started a career with RMGH, now Emmetts. In her spare time, Alysha enjoys baking and experimenting with new recipes. **Favourite part of the job?** Seeing the customer and their family's happy faces when they receive their new John Deere tractor, there's nothing better!



Greg Lannan
Spare Parts Interpreter,
Murray Bridge

Greg has been a Murray Bridge local for 37 years. In the past he has been employed in a couple of different spare parts / engineering supplies businesses in the local area as well as a 3 year stint with an Internet Service Provider in Adelaide providing technical support to customers. He is currently employed by Emmetts as a Spare Parts Interpreter, and enjoys assisting the customers to source their parts and get their machinery back up and running. **Favourite part of the job?** The people! Both those I work with and the customers.

CONGRATULATIONS!



Rob Bennett
Spare Parts Manager,
Swan Hill

Rob recently celebrated 10 years at Emmetts Swan Hill on Monday July 17th. Thank you to Rob for his many years of service, and dedication to the Swan Hill customers!



PULL PROFITS FROM DATA

We realised that with all the machinery, technology, satellites, mapping, computer integrated systems and data now accessible within the Australian agriculture sector, the majority of growers and consultants are not using technology to it's full potential.

This gave rise to the establishment of AGree Decision Ag by Emmetts.

AGree is focused on working through the precision ag journey with customers. To ensure clarity of information, by analysis and application of this data for optimal profits.

We will help turn the vast amount of data collected or collectable from your farming system into information that you can use to make informed decisions that will increase your knowledge into the future.

www.agreedecisionag.com.au



www.emmetts.com.au