



www.emmetts.com.au

AUTUMN 2020  
Issue 9

**FREE  
MAGAZINE**



# FIELD OF DREAMS



*keeping farmers farming since 1957*



LIFE'S EASIER  
WHEN YOU JOIN THE  
**JOHN DEERE**  
**FAMILY**



100 Series Mowers  
E110 from  
**\$3,619\***



Residential ZTrak™ Zero-Turn Mowers  
Z335E from  
**\$4,739\***



Select Series™ Mowers  
X350 42 in.  
Deck from  
**\$5,802\***

**0%**  
**P.A.**

Finance<sup>^</sup> Available

**No Deposit**  
**36 Month Term**  
**On selected ride-on  
lawn equipment**

<sup>^</sup>Reverts to variable cash advance rate. Offer valid from 26/08/19 - 31/03/20. Annual fee \$99.00. Minimum purchase amount \$750.00.

Visit us today for a great deal



**JOHN DEERE**

emmetts 

Some products, options, attachments or accessories may not be available in all regions and from all dealers. Products, specifications and availability are subject to change without notice. \*Prices shown are starting from, in Australian dollars including GST of base unit only through 31/03/20. Price does not include pre-delivery, freight, assembly or dealer charges. ^Conditions apply. Interest free finance is applied only to promotional transactions for the specified period. Balances outstanding at the end of the promotional period will form part of the normal account balances and will accrue interest at the cash advance rate current at the time or 25.99% pa as of 26/08/19 and subject to change. See in-store for details. Monthly repayments are required and calculated at 3% of the outstanding balance or \$30, whichever is higher. Lending criteria, terms and conditions, fees, and charges apply and are available on application. Credit provided by HSBC Bank Australia Limited ABN 48 006 434 162. Australian Credit Licence 232595.

# A MESSAGE FROM PETER EMMETT

With harvest concluded across South Australia and Victoria, it is hard to celebrate as many are still reeling with what mother nature threw at us in December and January. The bushfires have been devastating, particularly to the businesses, orchardists, wine growers and livestock producers through the Adelaide Hills, and Kangaroo Island. To lose both homes and businesses is a testament to how humans prevail through adversity and still continue on. Many of the growers who have been burnt out, will replant, and continue to dedicate their lives to growing food as did the famers affected by the Pinery Fires of 2016.

To support the growers directly affected, Emmetts have donated to the Blaze Aid camps and the teams who will be working on Kangaroo Island and in the Adelaide Hills. In mid-January, we assisted by donating fuel to the logistics operation of baling and moving feed from the Wimmera region to East Gippsland and Southern NSW via a convoy of hay trucks. We also supported a group of volunteers from the Harrow Balmoral Football Netball Club who travelled to Kangaroo Island in February to lend their support to those farmers by supplying a JD tractor and front end loader along with a credit at the Parndana branch for fuel to help with fencing and clean up work. Emmetts have also made a donation to Blaze Aid, to the Lobethal camp in South Australia.

For those growers who completed harvest, many were pleased with the yields and grain quality that was achieved from lower than average rainfall. This is a testament to growers moisture conserving production practices, continually improving varieties, improved machinery to reduce losses, and good on farm decision making.

When I meet enthusiastic people who are working in an area they are passionate about, their excitement and positivity is contagious. The Rethus Family are the perfect example of this, read their article on Page 20 and be prepared to be inspired.

The technology available to us today, is what keeps me excited and coming to work every morning.

- To know that artificial intelligence is being used to reduce losses and improve yields.
- To know that machinery is predictive for machine breakdowns and machine health can be monitored remotely is fantastic.
- To know that within my lifetime, I will see fully autonomous machinery in field.

The implications of this technology for each farmer will further change their profitability, but also their allocation of time. With autonomous machinery, labour hours can be reallocated to growing the business, to family, to community. To then multiplying that time efficiency across the industry, who knows what a typical work day will look like in agriculture.

However it is never easy keeping up with these changes especially as the years begin to add up on you, the secret is to start, then all it just takes one step at a time. Our fully integrated Precision Ag department can help you on that journey all you need to do is ask.

Finally I just want to say that 2020 is looking good with good rains to start the year off and with the release of the new model tractors from John Deere, their commitment to advancement in machinery design and manufacturing is second to none. Their continued investment of US\$1.5 billion per year in R&D does pay off, I am very proud of Emmetts 30 year relationship with them.

## John Deere R4060 04

Get acquainted with the new John Deere R4060 Self Propelled Sprayer

## Stihl in Roseworthy 07

A recap of our Stihl launch event and Emmetts Roseworthy.

## Bourgault 08

An insight into a few items in our Bourgault range.

## Cropscan 10

A look into the innovative technology generating better crop samples.

## Starting With Data 12

Learn how data collection can affect your yield.

## Introducing TechSTAR 13

A look inside Emmetts new technician apprenticeship program.

## Innovation in the The Wimmera 16

Inside the Tornado system.

## Introducing the 8RX Tractor 18

The powerful new 8RX is here!

## The Rethus Family of the Wimmera 20

A generational spirit of innovation and love for technology.

## ReliaBELT Conveyors 23

Emmetts is now supplying ReliaBELT's High Capacity conveyors.

## Used Machinery Guide 26

Deals on all brands of farm machinery.

# SOLUTIONS THAT APPLY.



Experience unparalleled accuracy with the R4060 Self Propelled Sprayer with Carbon Fibre Boom & ExactApply



# INCREASED POWER, GREATER TRACTION, MORE EFFICIENCY.



Emmetts has spent the last couple of months running demos of the new John Deere R4060 self propelled sprayer through the Victoria and South Australia.

John Deere has expanded the top end of its 4-Series Sprayers with the introduction of its biggest sprayer yet – the 6,057L R4060 with new CommandDrive™ powertrain.

In addition, the existing R4045 Sprayer will come standard with CommandDrive as of 2020. CommandDrive is a new hydrostatic all-wheel-drive powertrain that transfers more power to the ground while offering improved traction, fuel efficiency and a quieter ride for the operator.

These two sprayers are designed for large, broad-acre cropping systems and high-volume applications. "This new powertrain will help cover more acres quickly and efficiently," Lindsey Pollock, John Deere Product Manager for Sprayers, said. "Time is often the critical factor in most field applications, no matter the crop or season, with very tight application windows. The R4060 and redesigned R4045 can help operators traverse wide-ranging field conditions and hilly terrain in order to make accurate applications faster and more comfortably than before."

CommandDrive is an intelligent powertrain that uses a single hydrostatic pump to power

all four variable-displacement wheel motors.

If one or more wheels lose traction, the system adjusts to slow the slipping wheels and directs more flow to the other wheels with traction in order to power the sprayer over the terrain. The powertrain helps the sprayer more easily handle hills, soft soil, and other conditions where additional traction is needed.

In addition, CommandDrive works in tandem with the engine and entire sprayer system to automatically increase RPMs when more power is needed and to maintain proper spraying.

With the powertrain's Auto Mode setting, operators can maintain selected ground speed and application rate at lower engine RPMs, while the Auto Idle setting reduces the engine's RPM to 900 when the machine is stopped. Both functions help reduce fuel/DEF consumption and provide a quieter cab for the operator.

Both sprayers come equipped with a multi-function hydro handle with six customisable control buttons, allowing the operator to easily select and control the most common operating functions. Headland Management System also is included, which takes the work out of making headland turns by resuming automated functions, such as AutoTrac™ and BoomTrac™ Pro, and stopping and starting spray applications.

AutoTrac Vision and RowSense™ are optional technologies that help keep the sprayers tracking accurately through fields during the growing season. The ExactApply™ nozzle control technology gives operators the ability to maintain consistent droplet size and pattern at different speeds across the entire width of the boom, while reducing the potential for overlaps, skips and drift. The optional Mobile Weather feature gives operators the ability to document weather, soil and field conditions as they move across a field.

All Model Year 2020 sprayers now come standard with an expanded Precision Ag intelligence package. In addition to the existing integration of Generation 4 CommandCenter Displays, AutoTrac and documentation, customers now get JDLink™ with five years of connected service. JDLink enables the machine to easily and securely transfer data according to the customer's needs, and for customers to monitor machine performance remotely. This expanded set of standard intelligence features enables customers to more easily realize the value of a connected machine.

"Owners can leverage the power of Remote Display Access to monitor sprayer usage and performance from their home or office," Pollock said. "If the sprayer is being underutilised or field operations are not being properly conducted, you can quickly put plans in place to improve productivity."

This article originally appeared in The Weekly Advertiser on the 25/09/2019.



# Meet the Family

John Deere 1-9 family tractors for any task. Find your perfect match at Emmetts.



## 1 SERIES FAMILY

The value-spec 23 horsepower 1023E meets all of the basic needs around your property. Or choose the 1025R for a premium, comfortable workhorse for your small acreage.



## 2 SERIES FAMILY

Ranging from 24 to 36 horsepower, these comfortable compact tractors feature a drive-over mower deck, foldable Roll over protection and standard four-wheel drive.



## 3 SERIES FAMILY

Choose from the affordable E series or the premium R series compact tractors for tasks like finish mowing, rotary cutting, heavy loader work and rotary tilling on a large property.



## 4 SERIES FAMILY

The 4105 is built for hard work: loading, mowing and landscaping. The mid-spec 4M Series are available in 49 and 66 horsepower models, as are the premium 4R series.



## UTILITY TRACTORS

The 5E Series (55 to 93 hp), mid-spec 5M Series (85 to 115 hp), premium 5R Series (90 to 125 hp), and powerful 6 Family (90 to 250) are built to get the job done.



## SPECIALTY TRACTORS

Includes hi-crop tractors with over 594 mm of front axle space, low profile tractors, and the super-narrow 5GV Series (75 to 85 hp) and 5GN Series (75 to 100 hp).



## ROW-CROP TRACTORS

The 7R Series, (210 to 330 hp) and the 8R / 8RT Series (230 to 410 hp) tractors deliver uncompromised performance.



## 9 FAMILY 4WD/TRACK TRACTORS

Meet the 9R, 9RT and the 9RX Series tractors (370 to 620hp). Whether your operation calls for tyres, two tracks or four, the 9 Family has you covered.

**MANY  
MODELS  
IN STOCK  
NOW!**

1300 628 596  
www.emmetts.com.au



JOHN DEERE

emmetts 

HORSHAM KADINA MURRAY BRIDGE OAKBANK PARNDANA PINNAROO RENMARK ROSEWORTHY RUPANYUP SWAN HILL WARRACKNABEAL



# S700 SERIES HARVESTERS ORDER NOW!

- John Deere Combine Advisor
- State of the art Command Centre
- 50% larger flighting on 700D Rigid Draper
- ActiveVision Cameras
- Active Yield
- Gen 4 Display



**TALK TO US ABOUT MY20  
MODELS THAT WILL BE IN STOCK  
FOR THE 2020 HARVEST**

**3<sup>#</sup> YRS FREE**  
**PRE-SEASON INSPECTIONS  
AND FIRST SERVICE**

**3 YRS / 1250 HRS LIMITED  
POWERGARD  
PROTECTION PLAN<sup>^</sup>**

#Includes first service, travel and parts. Three years free preseason inspections if performed by June each year. Travel included within Emmetts dealer AOR, charged at normal travel rate outside this area. Expires 31/03/2020. ^Additional one year offered, totaling 3 years or 1250 hours limited warranty on engine and power train. The Limited PowerGard Protection Plan does not cover headers, attachments, maintenance or high-wear items, nor other non-covered components specifically mentioned in the contract terms. Always check the actual PowerGard Protection Plan contract for details, exclusions and limitations. Expires 31/03/2020.



# STIHL IN ROSEWORTHY

Emmetts was thrilled to have announced in November 2019 that the Stihl product line has now taken up residence in the Roseworthy store. With the new product line came a fantastic product launch event on a glorious sunny Saturday. The weather meant that most people were spraying, but we still celebrated. Emmetts and Stihl staff were on hand to offer free chainsaw sharpening, demos of the different size chainsaws and suggestions on battery sizes.

With the full Stihl product range, Emmetts hope to serve all of your lawn and garden needs in a one stop shop. You will also notice as you visit both the Roseworthy and Oakbank stores that they have has a facelift, with new shop fit outs and new signs.

Please think of Emmetts as you consider all of your lawn and garden needs.





# BOURGALT GEARED UP FOR SEEDING IN 2020

Bourgault Australia has been in their new Eastern Seaboard site situated near Albury, NSW for about 3 years now, and never looked back. This move improved Bourgault's location with immediate access to an established distribution hub with national transport infrastructure and air freight facilities for the transport of equipment to and from the site, while still maintaining a central location in the grain growing regions of Eastern Australia. The state-of-the-art facility sits on 16 ha (40 ac), providing Bourgault Australia a base to service the Queensland, New South Wales, Victoria and South Australian markets.

Recently, the Albury site ran the world first prototype testing program for the new Bourgault Frame Mounted Seeders (FMS). Results from evaluations conducted in this region have refined the FMS product to the benefit of our customers as well as new customers around the globe.



By investing in the Future, Bourgault Australia is committed to maintaining control of their business and future. This allows us to stay true to our Australian roots and adjust quickly and effectively as farmer's needs change.

The significant investment made in research, development, and service over the last several years through both their Perth and Albury facilities underlines Bourgault's conviction in the resilience of farmers and in the future of agriculture in Australia. We look forward to continue offering the most advanced and effective seeding systems for many years to come.



## The AIR SEEDER

The air seeder is designed with the same proven Bourgault ingenuity found on Bourgault's large air seeder tanks.

Design features such as the PDM ProTM Metering Auger that delivers accurate product metering of an extensive range of seeds and fertilizers and the KNEX inter-tank system (found on the 6000 and 7000 series tanks) that allows you the flexibility to combine or separate tanks for increased seeding productivity. Large, hi-flotation tires located on the back of the drill support the contents of the 4800 ltr or 7200ltr air seeder.





**CD & HD FRAME MOUNTED SEEDERS (FMS)  
BOURGAULT PRECISION,  
STRENGTH & PRODUCTIVITY -  
ALL PERFECTLY CONTAINED IN  
ONE PACKAGE.**

Built specifically for Australian Farmers, with each unit rigorously tested across 30 farms over 2000Ha in NSW and Victoria, the self-contained design of the Bourgaault Frame Mounted Seeder is comprised of the signature Bourgaault heavy-duty steel air seeder tank and an independent seeding drill, either coulter (CD) or hoe drill HD. With a transport width under 3.5m and height under 4.5m, the FMS Series seed drills are made tough for Australian conditions.

**The DRILL (CD or HD)**

The independent drill is available in either a 2-row, coulter drill system (CD) that deploys a Parallel Walking Coulter Arm Assembly or a 3-row, hoe drill system (HD) that deploys the PHD™ Seed Opener Assembly.

Both the coulter and hoe drills operate independently of a sturdy 5" (127 mm) x 5" (127 mm) fixed frame. The front of the drill is designed with a solid draw hitch which transfers the load to the tractor. The 20' (6 m) FMS unfolds into a rigid continuous bar. The 26' (8 m) can be equipped with optional running gear on the wing to operate as a 3-plex bar for improved land following capability.





**BOURGAULT  
FRAME  
MOUNTED  
SEEDER**

**6m & 8m 2020 LAUNCH**

See your local dealer for details.



3meter transport width for all FMS Models



**CD & HD**

FRAME MOUNTED Seeders

Bourgaault Precision,  
Strength & Productivity -  
all perfectly contained  
in the one package

4meter or less transport height for all FMS Models





# 3300H

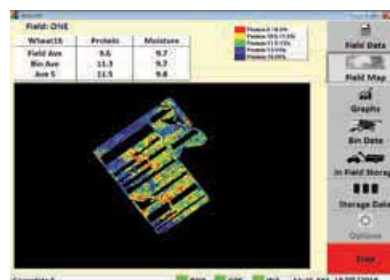
## On Combine Whole Grain Analyser

*Know your fields...Know your grains*



The CropScan 3300H On Combine Analyser measures protein, oil, starch, fiber and moisture in grains and oil seeds in real time as they are harvested. Real-time protein measurements provide a means of segregating and blending grain in the field. Increase your income by 10-30% by measuring your grain and selling it for its real value. Field maps can be generated for:

- Protein, Oil, Moisture
- Yield
- Nitrogen Removal
- Gross Margin
- Protein/Yield Correlation



Protein and yield mapping provide a more complete picture of the nitrogen uptake and availability in your fields, with data that is easily converted into variable rate prescriptions.

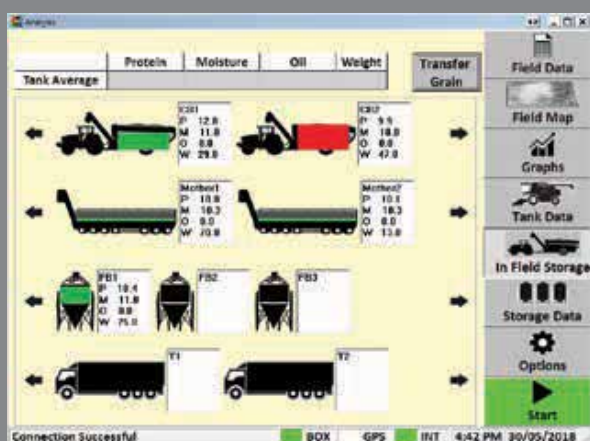
Managing nitrogen fertilizer applications: balance protein and yield across the field.

Reduce fertilizer use = reduce cost.

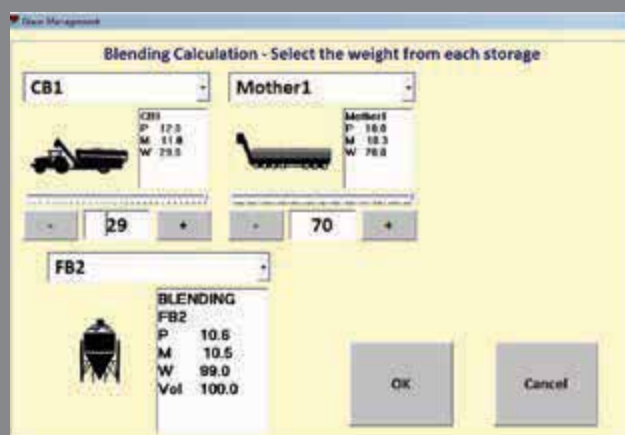
Soil testing: strategically identify zones for testing.

VRF Equipment Investment: Protein/Yield Correlation Quadrant Maps ensure more accurate VRF prescriptions. Increasing ROI through accurate prescriptions.

The CropScan 3300H software provides a screen that allows the combine operator to direct how much and where grain is segregated and stored on farm or sent to the silo.



The CropNet Blending Estimator optimises the amount of grain to blend from each field bin, grain cart, or mother bin into a truck, silo, shed or grain bag.



The protein, moisture, oil, starch and fibre data can be stored in the CropScan 3300H PC as running averages, field maps & bin and truck.

The data can be exported directly to a remote PC and posted to the CropNet website where the data can be viewed from a smart phone or tablet. A summary report can be sent by email or SMS to a designated address.



The measurement of protein, oil and moisture in grains and oil seeds are major determinants of the quality and the price of the grains and oil seeds in many countries around the world. In Australia, wheat and barley farmers are paid depending on the protein of their grain amongst other measurements.

If the grains can be segregated as close to the paddock, then farmers have the opportunity to blend low protein grain with high protein grain in order to sell more of their crops at a higher price.

The CropScan 3000 On Combine Analyser is a near infrared analyser designed to operate on a Combine Harvester to measure protein, oil and moisture in grains and oil seeds as they are harvested.

As grain travels up the clean grain elevator, grains drop into the Remote Sampling Head where they are trapped between the top and bottom flap. Light passes through the sample of grains and is collected by a fiber optic cable on the opposite side.

The light is then transmitted back to the NIR spectrometer located inside the harvester's cabin.

The light is separated across a wavelength range of from 720-1100nm. Within this region of the electromagnetic spectrum, protein (N-H), water (O-H) and fat (C-H) bonds absorb NIR light.

The amount of NIR light absorbed at the resonant frequencies for protein, water and fat are proportional to the concentration. The touch screen PC located in the harvester's cabin



## Next Level Harvesting Performance!

MacDon 1 Series FlexDraper® and Draper Headers are designed to maximize productivity in the most challenging harvesting conditions. From our Active Float System that keeps our headers true-to-the-ground, to the outstanding pick-up performance of our reel, to the combine optimized increased capacity of our FeedMacX™ crop feeding system. It all adds up to getting the most from your field, in any crop, in any condition, and on any combine.

Take your harvest performance to the next level with MacDon's full line of harvesting machines, see them in action at [MacDon.com](http://MacDon.com)

Visit [MacDon.com](http://MacDon.com)



2019 marks MacDon's 70<sup>th</sup> year as **The Harvesting Specialists!**



# STARTING WITH DATA

The results from the 2019 season were a testament to the modern farming practices the industry use, continually doing more with less. Producers understand where efficiencies are found and a lot of that comes back to doing effective analysis on the year as it played out agronomically. What management practices lead to the highest yields? Can profitability increase with change in management strategy? It comes back to right product, right place, right time, right rate!

The answer lies within yield data. Yield data is the foundational piece of information from which to build spatial information on. It measures variety differences, responses to fertiliser, topography, soil type and environment, and chemical decisions made throughout the season.

One of the greatest benefits of yield mapping is to identify areas of variability. Whether its boosting poorer producing areas or pushing the limits of the highest producing crops, yield data paves the way for variable rate application, or zoned management practices. Implementation of variable rate applications is now a simple, streamlined process in many circumstances. Any form of spatial information can be overlayed to provide further insights- including elevation maps, protein maps and profitability maps to show where the highest grossing part of the paddock is.

Most headers are capable of recording yield data, no matter which colour it may be. In order to record yield data, there are a few steps required:

Before entering the paddock:

- Ensure all appropriate maintenance is completed on each header
- Update all in cab software
- Make sure the GPS screen is ready for harvest- clean off any old data that may take up storage space and ensure appropriate naming of paddocks, paddock boundaries and guidance lines are all in place. A precision ag consultant can assist with this.
- Calibrate the header to ensure the most correct and accurate measurement.



Whilst in the paddock:

- Check that data is being recorded
- Calibrate the header according to each crop type whenever crop type is changed
- Use telematics to automatically export data files are unavailable, make sure that data files are regularly downloaded to a USB (and backing this USB up to a place that can be accessed easily)

Once the data has been collected, the next step is to take a look! There are several online platforms that allow for data visualisation for free, including My John Deere Operations Center. The upload process is quick and easy on any windows device. From here, post calibration can be completed by anyone with access to the total dry yield of grain taken from the paddock. When observing the yield data, if there's something that doesn't quite look right, the data may require "cleaning", but this is not always necessary.

To get the most out of yield data, information must be ground truthed- meaning that additional knowledge must be put with it to understand why the identified differences occur- these may be soil tests, EM38 maps, seeding data or local knowledge. Overlay, merge and compare other forms of data such as NDVI maps, previous years yield data to observe areas of opportunity; all analysis that can be completed in an Operations Center account. This information can then be used to reduce variability within the paddock and make more data backed decisions to improve overall profitability.

For more information on setting up yield monitors, data cleaning and interpretation, and how variable rate applications could work for your business, get in contact with Matt or Laura at AGree Decision Ag on 03 5382 9457.

AGree Decision Ag is the precision agronomy department within Emmetts.  
[www.agreedecisionag.com.au](http://www.agreedecisionag.com.au)





# INTRODUCING <sup>emmetts</sup> TechSTAR

Emmetts are pleased announce the inaugural Emmetts TechSTAR Apprenticeship Program for 2020! With STAR standing for Superior Technician Apprenticeship Results, it has been developed by Emmetts to ensure that aspiring Service Technicians are given the best opportunity to complete their technical training and develop key skills in a team environment. With the ever-increasing advancement of technology and Emmetts commitment in support to keep farmers farming, saw the development of the apprentice program crucial as a foundation for the future.

Finding people to become technicians has always been difficult, We have always found it problematic to encourage young people into the technical field. TechSTAR gives young people who may not have the desire

to attend university the opportunity to stay in the country and build a career. A career can take many paths within the technical field with many fields still to be discovered with machinery's ever-developing advances.

To become a TechSTAR apprentice, not only did the new recruits have to successfully pass the interview stage, they had to complete a number of aptitude tests. From standard written exam testing, reading, writing and mathematics to computer testz and practical testing. The practical testing identified their skills around using hand tools and the ability to comprehend instructions.

As a TechSTAR apprentice, each person will have the opportunity to learn from a range of situations, machines, people and customers as they build their specialised skills to become experts in their fields. TechSTAR's will have exposure to the

wide range of machines and equipment that Emmetts sell & service.

TechSTAR's will learn the importance of teamwork by coming together for several weeklong block training sessions within our training centre in Horsham. This combined with on the job training, mentoring, and networking opportunities is all designed to give aspiring technicians, knowledge, and confidence to have a successful career with Emmetts.

Ultimately, the program will support our apprentices to achieve their highest potential so Emmetts can provide the utmost support to our customers within the farming community.

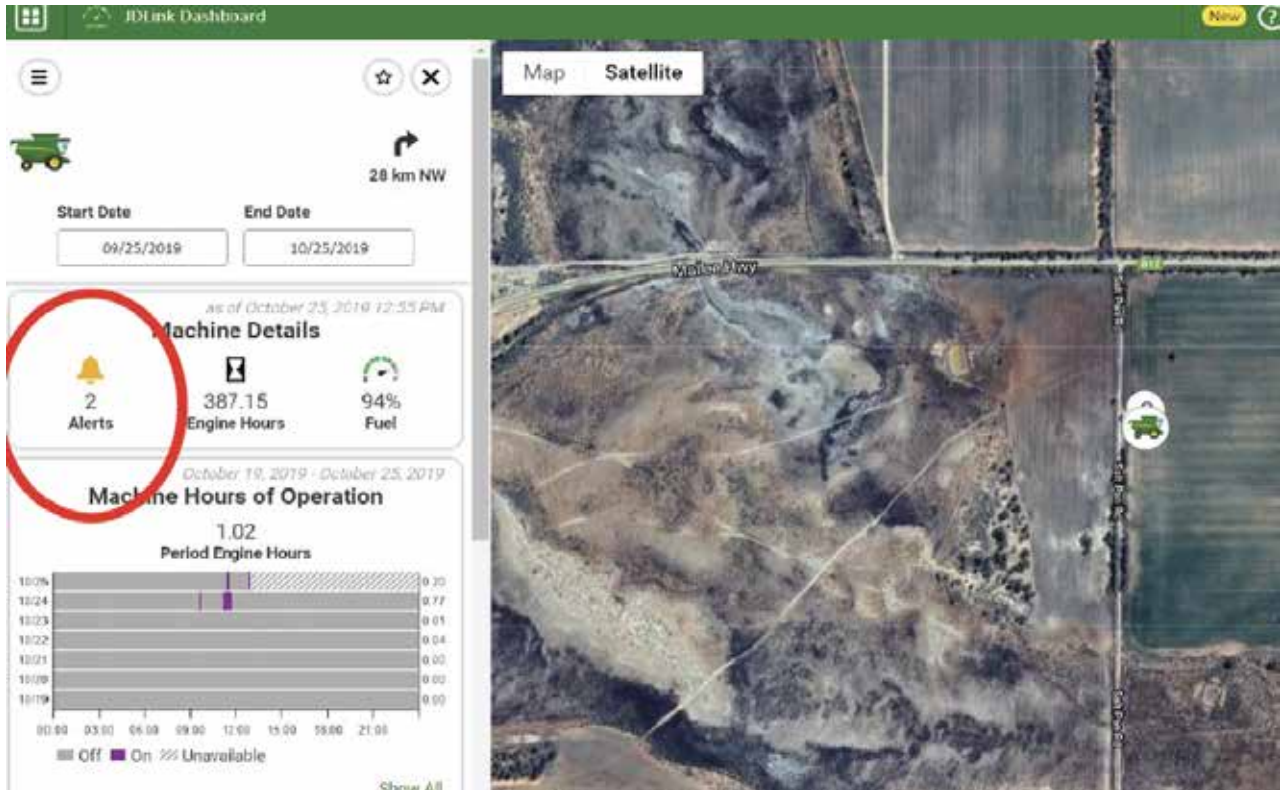
We look forward to seeing our new recruits developing into STAR Technicians.







# CONNECTED SUPPORT FROM EMMETTS & JOHN DEERE



John Deere Connected Support™ was designed to improve customer service and machine monitoring. Enabled through the JDLink™ telematics connection, John Deere Connected Support leverages a suite of dealer and factory tools to deliver increased productivity, uptime and lower daily operating costs to the customer with their machine operation and preventative service messages.

## Service ADVISOR Remote

With John Deere Connected Support, Emmetts service department will take a proactive approach to using these tools to improve service by contacting the customer when notifications are sent by the machine to the machine health dashboard. Emmetts can now remotely monitor machines, leveraging two key tools - Service ADVISOR™ Remote and Expert Alerts – which allows the service team to have the information to act quickly to avoid or reduce machine downtime. John Deere designed these tools to ensure machines are kept in peak operating condition, resulting in increased productivity.

A key to the Connected Support offering is Service ADVISOR Remote, which allows the dealer to diagnosis a problem from a remote location, prior to visiting the machine in field. The Emmetts service team can analyse machine health in real time or set a trigger point to record intermittent faults, providing a deep look into the machine's health. Additionally, the remote diagnostic capabilities can reduce troubleshooting time and eliminate trips to the machine.

## Ask Emmetts Service Department for a Machine Health Check today!

Emmetts now offers Machine Health Checks prior to visiting the customer, this will allow techs to have a diagnosis in some cases prior to visiting the machine and allows them to come with necessary parts to do the in-field repair, saving time and travel.

At only \$60 prior to call out, this health check can reduce the customers downtime and increase productivity.



# YOU'RE ALWAYS CONNECTED TO EXPERT SUPPORT.



## Remote Display Access

The Emmetts Service Department can analyse real-time data and DTCs (Diagnostic Trouble Codes) ensuring they're better prepared for a service call to maximise uptime and keep the operator running.

Remote Machine Recording on specific machines enables analysis of machines over a period of time while the machine is still in operation, assisting with the diagnosis of intermittent issues.

In some cases, technicians can use the information obtained from DTCs to remedy the problem without the need for a service visit to the machine. This is possible by interacting directly with the operator in the cab through tools such as Remote Display Access (RDA), viewing and resetting DTCs and facilitating software upgrades remotely.

Emmetts Service Managers and technicians can plan routes more efficiently with machine location data and ensure they have the right parts and information to complete the repair in the shortest possible time.

## Expert Alerts

Expert Alerts assist to identify and diagnose your machine in some situations before a machine is symptomatic, allowing the operator to continue with the operation temporarily until a convenient time - minimising cost of repair and potential impact on machine components.

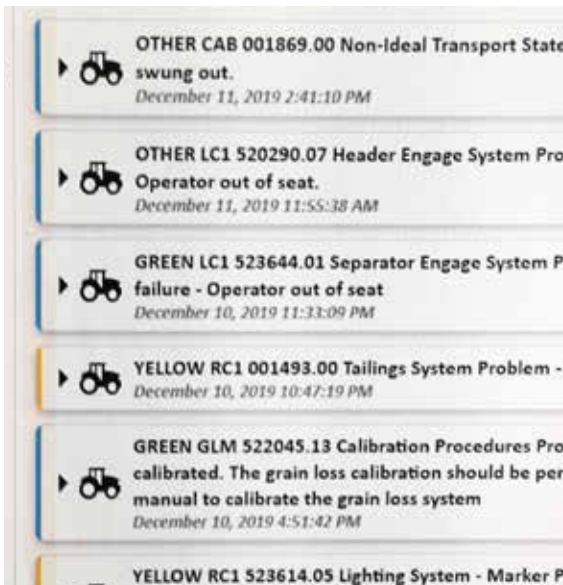
This is a proactive system, where Emmetts is notified of potential concerns, and will work with you to ensure your machine is operational for the maximum period of time with minimum impact on your operation or bottom line.

Expert Alerts utilise advanced algorithms to analyse telematics data to proactively identify potential machine failures. It provides clear instructions on the potential failure, time until failure may occur and repair requirements.

These advanced algorithms coupled with real-time data allow customers to reduce service costs and improve operational performance and productivity.

Expert Alerts coupled with Machine Dashboard create a proactive dealer service approach to ensure your machines' uptime is maximised.

Expert Alerts also equip technicians with information needed to bring the right part the first time, so machines are back on the job as quickly as possible.



**John Deere Connected Support  
creates a partnership between  
Emmetts and the John Deere  
factory teams that work  
tirelessly to monitor equipment and  
increase uptime.**



# INNOVATION IN THE WIMMERA

**Emmetts is now selling the Tornado Harvester Airflow System to reduce the risk of harvester fires, and reduce downtime at harvest.**

Horsham Hydraulics is embedded in broadacre cropping, and has been for the past 25 years. Located in Horsham Victoria, Horsham Hydraulics started back in 1994 selling and repairing hydraulics, and now employs a team of 17 people. Always looking for innovative ways to help farmers, they began offering sprayer tank extensions in 2012, and the Tornado Harvester Airflow System in 2016.

The idea for the Tornado was generated by a customer, who was having issues with spot fires and came to Horsham Hydraulics for a solution. Fires were being ignited due to the dust and heat generated from the harvester. To avoid the fires that were spontaneously occurring, the operator had to stop harvesting every 30 minutes to blow down the harvester, which became increasingly frustrating and time consuming.

The Horsham Hydraulics team put together a system to blow the dust from the machine while the harvester was operating. This eliminated the need to stop and blow down the harvester, and therefore increased the acres covered per hour and helped solve the customer's problem for the remainder of the season. News travelled through the community quickly, and other farmers in the area ordered the system. In the first year, Horsham Hydraulics installed the Tornado fan system on 5 harvesters, and the feedback was very positive.

Over the year, Horsham Hydraulics continued to refine the design of the Tornado system, and began production and installation for the 2017 harvest season.

After extensive research and development was conducted, a new hydraulic circuit on the Tornado was designed. The new circuit used only 8 Hp from the harvester and the existing hydraulics, which insured that the

speed and capacity of the harvester was not negatively impacted. The air hose was tested extensively to ensure it could maintain its structural integrity in the extreme heat of operation.

The Tornado has its own monitors as well as John Deere specific mounting brackets which eliminated the need to add extra mounting points.

Word of mouth has spread with the help of television news coverage, articles in agriculture papers, social media and satisfied customers. With this, Horsham Hydraulics has changed their business practice to set up dealers across Australia who will sell and install the Tornado Harvester Airflow systems. Emmetts is pleased to offer the Tornado system to customers at every branch across our network.

This is a great example of two local businesses teaming up to support farming innovation.



## System Monitoring

The system is connected to a cab mounted display which allows the harvester operator to check that the system is operating effectively.



## Powerful Fan System

At the heart of each system is a powerful fan, which helps deliver air flow to each outlet. The fan is covered by a long lasting ventilated cover to enable airflow, while stopping any major obstructions from entering the fan.



## Multiple Air Outlets

Features 6 to 12 fan outlets which are placed in high risk areas such as the engine bay, exhaust system, battery, rotor shaft and bearings. Ensuring dust and debris doesn't settle on hotspots and ignite.



## High Quality Parts

The fan system is manufactured using high quality parts and components to deliver consistent performance and withstand the harshest Australian conditions.





**Emmetts is proud to have an in-house finance resource for our customers. Ask us how we can help you TODAY!**

**[www.emmetts.com.au](http://www.emmetts.com.au)**

#### **Emmetts Finance**

Emmetts is continuing to evolve its finance arm with the aim to engage customers, across all stages of the financing cycle. Not only can Emmetts Finance source the best possible funding arrangement for your machinery purchase, but we can also assist with all post-settlement requests such as refinancing your assets, documents for your accountant, arranging a payout or a quote for a new piece of equipment.

Our dedicated team of experts combine both knowledge and experience in the agricultural industry with access to technology and finance expertise.

#### **Assisting with your end of term options**

Choosing which end-of-term option is the best for you and your business structure can require some careful planning. Determining what your specific needs are and how the finance structure best serves these needs is the first step. It is critically important to start thinking through your options well in advance of

the date the contract is due to mature. Ideally this is around two months beforehand. It isn't always immediately obvious which option is going to be best for you, which is where Emmetts Finance can assist to ensure you're considering all factors.

A brief chat with Ben Millar from Emmetts Finance will quickly enable you to work through your options.

#### **Options on handling a balloon payment**

One example of an end-of-term option might be to buy out the residual/balloon payment and keep the asset. The balloon payment or residual is usually calculated in line with the resale value of the asset at the end of the term period. This is a good option if you're not ready to part with the asset. But if the thought of making the lump sum payment is daunting then refinancing is an option to allow you to deal with the balloon repayment over a longer period and hold onto your asset at the same time.

Refinancing is a simple way to offset the balloon payment and renegotiate a new

term. As your contract approaches maturity, you also have the option to trade in the asset for a new one.

In summary your end-of-term options are:

#### **1. Refinance into a new term - refinance the balloon payment –**

whereby you can keep the equipment and refinance the balloon payment over a (longer) nominated term.

#### **2. Buy the asset outright - pay the balloon payment in full –**

whereby you retain ownership of the equipment by making payment to finalise the contract.

#### **3. Consider an upgrade - trade-in equipment and refinance a new or upgraded model.**

Please contact Ben Millar on 0447 821 431 or [bmillar@emmetts.com.au](mailto:bmillar@emmetts.com.au) for more information about how your asset financing can help keep your business's wheels turning.



# MEET THE JOHN DEERE 8RX

**For model year 2020, John Deere has introduced a new 8 Family Tractor lineup that includes 8R wheel tractors, 8RT two-track tractors and the industry's first fixed-frame four-track tractors, the all-new 8RX. These new tractors come standard equipped with the latest precision ag technology and allow customers to choose the machine configuration, options and horsepower to best fit their operation.**

"New 8RX Tractors offer all the benefits of tracks and provide a driving experience more like a wheel tractor," said Tammy Lee, marketing manager, production agriculture for John Deere. "They represent the next leap forward in tractor innovation and have everything customers like about 8R wheel tractors with the addition of four independent tracks and a new fully suspended cab that makes them more comfortable to operate. This new machine form delivers unmatched flotation, traction and ride quality."

With the turning characteristics of wheel tractors, 8RX Tractors deliver the pulling performance of tracks by providing more surface area of contact, less ground pressure and less slip than wheel tractors. "We didn't just add tracks to an 8R Tractor. This is a fully engineered John Deere four-track solution, not a bolt-on aftermarket product," Lee said. "A key component is the John Deere 1700 pivoting beam axle, specifically designed for a four-track tractor to provide the necessary strength and enable adjustability of tread spacings to fit grower needs."

John Deere offers a wide range of track and axle configurations for 8RX Tractors. Multiple tread-spacing options are available and include 193, 203.2, 223.5, or 304.8 cm (76, 80, 88, or 120 in.) wide front axles. Three belt widths are available and include 45.7 and 60.9 cm (18 and 24 in.) wide front belts, or 45.7, 60.9 and 76.2 cm (18, 24 and 30 in.) wide rear belts.

Every 8 Family Tractor also leaves the factory fully integrated, fully capable and fully supported with the latest technology. "For model year 2020, we made numerous precision ag technology updates that make it easy for customers to remotely monitor and manage tractor and field operations and to enable more timely transfer of prescriptions and data," Lee said.

The new StarFire 6000 integrated receiver requires no calibration of the Terrain Compensation Module (TCM), is more accurate than previous models and is less vulnerable to theft according to Lee. "Coupled with the guidance system enhancements that were made, operators will be up and running with even greater accuracy in less time. Regardless of the model a customer chooses, each 8 Family Tractor is precision-ag equipped to prepare precise seedbeds, handle variable-rate seeding and manage fertiliser prescriptions, all at up to 16 km/h (10 mph)," Lee said.

Every tractor in the 8 Family also received an all-new, larger cab, the largest John Deere has ever offered.

With an extra 5 centimetres of headroom and a 24 percent wider entry path, an automotive-inspired interior surrounds the operator and provides wide-open access to a new control layout. Customers can choose from three Comfort and Convenience cab packages that include Select, Premium or Ultimate.

The Ultimate cab includes an exclusive new leather seat with electronic adjustment, heating, ventilation and massage features, and smartphone integration with a 16.5 cm (6.5 in.) touchscreen and multi-speaker system. Also included in the Ultimate cab are a leather-wrapped steering wheel, footrests and carpeted floor mat.

In addition, three Visibility packages are offered, Select, Premium and Ultimate. For more efficient night-time operation, Ultimate Visibility features 22 work LED and eight convenience LED lights, twice as many lights as current models. This gives an operator 360 degrees of lighting coverage while working on or servicing their equipment. The Ultimate Visibility package also comes with electric, heated, telescopic mirrors; wipers and sunshades on the front, right-hand side and rear; and integrated front and rear cameras.

Improving dependability and simplifying routine service and maintenance for 8 Family Tractor customers was another priority of John Deere. Tractors in the 8 Family have up to 200 fewer connection points and fewer potential leak points.







In addition, a new decal was added inside each tractor's hood panel with regular service and maintenance points clearly identified to make these tasks easy to perform.

The new range comes with a choice of transmissions which includes the field-proven John Deere 16-Speed PST, e23™ PowerShift transmission or optional Infinitely Variable Transmission™ (IVT).

When customers equip their tractor with IVT and add optional CommandPRO™, they gain powerful, smooth, efficient tractor control. CommandPRO is an ergonomic multi-function control lever that puts tractor speed, direction and implement control in the palm of the operator's hand. Any of the 11 reconfigurable buttons can be customised to fit the job and individual settings can be saved for different operators.

"The precise speed control of CommandPRO with IVT makes implement hookups easy and allows for acceleration from zero to top speed with the push of the control – perfect for road transport operations," Lee said.

"These updated tractors are the most intelligent, comfortable and dependable tractors we have ever produced."

"With more horsepower, 17 percent more fuel capacity and an efficient drivetrain, an 8R 410 can help operators cover more acres per day more efficiently."

John Deere 8RT Tractors deliver unmatched two-track pulling performance according to Lee. Four models are available from 310 to 410 horsepower, and transport at speeds up to 26 mph. "John Deere 8RT Tractors are the only two-track tractor available with an AirCushion™ suspension system and four-corner cab suspension that carries the most comfortable, advanced cab in the industry," Lee said.

Speaking about the launch, Steve Wright, manager, marketing & sales said, "The adoption of precision farming techniques in Australia and New Zealand continues to grow. This is why we are so excited for the launch of these tractors – the most advanced we've ever released."

**Shipments of 8 Family of Tractors will begin arriving at Emmetts in May 2020. For more information visit the John Deere Website or contact your local Emmetts branch.**





# A GENERATIONAL SPIRIT OF INNOVATION AND LOVE FOR TECHNOLOGY

## THE RETHUS FAMILY OF THE WIMMERA

Over the years the Rethus family have been featured in several articles on machinery, technology adoption and farming practices such as No-Till, controlled traffic, and using summer crops to change soil profiles. Sitting down with Geoff (father), Luke and Tim (sons) Rethus, a greater portion of the picture became clear, on why they are leaders in innovation, and are one of those families who many are watching over the fence.

To provide background, the Rethus' operate a broadacre and export hay growing business in the Wimmera with land in Noradjuha, Horsham, and Vectis. Geoff's father owned a grain and sheep property near Nhill prior to his decision to move to Noradjuha in 1948. Geoff's brother recently retired from the farm, and was heavily involved in partnership with Geoff for 36 years. The Rethus operate a mixed fleet of equipment with technology a core priority within their purchasing decisions. With two S series John Deere harvesters, a 9RX Tractor, 1910 John Deere Air Cart fitted with tracks and a "liquid systems" unit towed by a custom built 80ft planter with Active Implement Guidance, Agrifac 160 foot boomspray operating through a GS4 Greenstar system with MTG for Data Sync, along with Krone hay equipment with others, all on 120" tramlines and multiples of 40'.

Both Tim and Luke were engineers, Luke a Telecommunications Engineer and Tim a Chemical Engineer with careers spanning over 10 years+ in the corporate world,

before deciding to come back to the farm in 2015.

When asked about the decision to come back to the farm, Luke and Tim said, although they were not raised by Geoff and Chris with the expectation of having to return to the farm, after 10 years+ in the corporate world with Telstra and SHELL, they each wanted to work in an area with fewer office politics, where they could make decisions that would have a wider impact, and where they had the ability to control the outcome. They also knew that they get along and can work together, both are excited about agriculture and how data and technology will be used into the future, engaging the engineer within each of them.

Part of their wider contribution towards the broader agriculture sector is their involvement in industry groups. Geoff has been active across a range of boards, having been a founding member of WIM-PAK Export Company and Board Member, a board member of VIC No-Till Farming Association, Grains Innovation Park Board Member and a member of Farm 500. Tim currently is a Director on the Birchip Cropping Group Board and Luke is on the Wimmera Machinery Field Days Committee, and a former member of the Vic No-Till Farming Association Board. Geoff is active on social media as an influencer on machinery, technology and broadacre farming practices.

**The "Why" of the generational adoption**  
The three hold a similar belief system in



the adoption of technology and a positivity towards increasing their gains through the land they have. Their buying pattern is different to most customers, in that they ask for all the options to be presented on the quote when purchasing machinery. They want to know all options that are available on the new machine so that they do not inadvertently miss out on a new feature or new technology.

The seeds of innovation were set by Alfred "Gordon" Rethus, Geoff's father, Tim told a story that as a child he remembered when his grandfather would purchase a new car, he wanted every space in the dashboard of the car to have every button and feature available at the time, to that model. Gordon Rethus, Geoff's father was also one of the first to purchase a self-propelled harvester when they were launched into the Australian market back around 1960.

Geoff spoke about their adoption of autosteer when it was first released. It was a benefit to their farm, and over the years



the technology has only improved. He said most of the technology they have adopted is like this, in that each iteration released is continually improved. As regular users of Operations Center, Geoff says, it could improve further... and it is improving further with each update (Operations Center and Mobile Applications are continually evolving, with an update cycle of 60 days). All acknowledge that part of the technology cycle is that the customer must be brought along and trained in how to use it. Then, as people are learning to use it, the system is continually improving.

If you don't continually adopt new technology as it is coming out, it could be very overwhelming if you then try to adopt multiple things at once. Tim and Geoff each said independent from each other that they see each advancement and new technology launch as the next step in John Deere's path toward full automation. The features launched over time, are a way to prove each element towards automation, while bringing the customer along on the journey.

### **The philosophy behind using the technology**

Tim and Luke both approach technology usage with their engineering background, as they understand the design process behind the tools. As Tim said, "the people designing these tools are experts, who all come together with a wide range of backgrounds to design solutions to farming problems using technology, sometimes they even re-evaluate the problems with their wider experience to address a multitude of limitations with one or two new designs."

With this, the Rethus' "know the logic behind the tools and leave the tools to work the way they were designed to work, because you can understand the purpose but also the limitations. And, they will continually evolve to improve over time."

John Deere have sent engineering teams, the global executive team and the CEO of John Deere Australia/New Zealand to visit the Rethus Farm. Luke was the only Australian farmer invited to the USA in 2018 to test drive and provide feedback on 400+ hp tractor prototypes. Luke says "they are listening, nothing was easily adaptable to controlled traffic a few years ago and now they are integrating it into the design. We are seeing the changes coming through that were discussed years ago." As Tim said, "John Deere products are always well thought out, even if they take a year to two longer than other companies to release a new machine. The new 8RX is

an example of this with its small chassis and 4 tracks, they did not copy anyone, they took a lot of different industry ideas and designed something new with a new interpretation of the tractor. It will be a tractor that can be used daily throughout the year on a range of applications. The team of John Deere engineers learn what the market needs, and then they design a solution."

### **Machine Sync by John Deere**

Prior to the 2019 harvest, Matt Burns, the Group Precision Ag Solutions Manager at Emmetts had discussed the option of using Machine Sync. With the offer of a trial, and the fact that the 9RX already had an automation activation, utilised for Active Implement Guidance at seeding time, it was a simple hardware change and demo activation to get it operating on both harvesters and chaser bin for harvest 2019. With a simplified set-up on the Gen 4 Screens, Tim and Luke were very impressed with the performance "straight out of the box". With 6 different chaser bin drivers, everyone involved said it made a huge impact on the working day.

Machine Sync enables GPS synchronisation of speed and steering between the harvester and tractor with chaser bin for unloading on the go in field. There is no need for the chaser bin driver to continually monitor and change the speed of the tractor, and the harvester driver does not need to spend 50% or more of his time, watching the auger to make sure it is going in the bin. The harvester driver can use machine sync to move the tractor either forward or back through "nudging" using an up or down button to evenly fill the chaser. Tim mentioned that this feature alone allows them to use chaser bin drivers who are less skilled, because this technology removes the human error risk, and the financial loss of grain ending up on the ground. It also overcomes the human element of not being able to see into the sun, or striving for accuracy while in a cloud of dust.

The Rethus' have since decided to add Machine Sync too both harvesters and will never do harvest without it.

Another highlight of Machine Sync is in "In-Field Data Sharing" the ability to share AB lines and yield maps between the two harvesters. "You'll notice a yield change in one machine, and then look at the other machines set up and change the set up on the other machine to reduce the losses."

**Right -  
Luke, Charlene & Lucy**



**Left to right  
Back : Geoff, Chris  
Front : Michelle, Claire, Heidi, Tim, Fred**

### **Operations Center by John Deere**

Geoff said, "Operations Center is continually improving and with the syncing of the sprayer MTG, GeoSys satellite imagery and NDVI data now integrated into Operations Centre." It is only their spreader that they have left within their fleet to integrate into Operations Center.

### **Combine Advisor by John Deere**

The Artificial Intelligence learning in the harvester is what excited Geoff when he watched the machine changing settings mid-afternoon of the 2018 harvest. At the beginning of the harvest day, he set up the sample and losses and showed the machine what parameters to use. With the cameras and monitors the machines would then play with the concaves or speed up the rotor or open the sieves to keep the sample consistent and reduce losses throughout the day. The machine changes sometimes surprised both Geoff and Luke,





as it would speed up the rotor to reduce cracking, something they would not have done manually. They also like the ICAC where they could highlight a problem to the machine, and it would provide diagnostic suggestions.

### **Emmetts Support and John Deere's Reliability**

One of the reasons that the Rethus' moved from a competitive brand to John Deere equipment in 2004 was resale and reliability, the other reason was the dealer support on offer. Geoff said "Emmetts support is key, if there is not a part in Melbourne at the John Deere ANZDC, Emmetts may pull a part off a used machine. Both Emmetts and John Deere are fair in the warranty and after warranty period in ensuring the machines keep going." The relationship with the Precision Ag Team of Emmetts is a very collaborative one, with learnings continually being shared between the Rethus' and Emmetts.

Tim said that "John Deere is one of the only companies that continually improve and are in the top three of competitive machines across all of the different brands. Sometimes a company has a win with a new product, but then they leave it to languish, and after 3-4 years, it has been superseded by a different brands product. With John Deere, you just know they are continually striving towards 'the next thing' whether it be a new model release, and completely new design, or a new piece of technology."



### **What are you excited about for the future?**

Tim: "The Agriculture industry is constantly doing very cool things. Ag is becoming more professional and data driven like chemical referencing to paddocks. Extra automation will continue to solve problems with more telemetry on every part of a machine, even to every bearing. Imagine heat sensors and alerts on every bearing. I don't know what automation will look like, but after using Machine Sync, it might just be me in a paddock at harvest, driving one header, and monitoring an autonomous second header and two chaser bin tractors, with no other drivers"

Geoff: "The technology we are just on the threshold of will be weather stations [and soil moisture monitoring]. We are getting more information using NDVI's and satellite mapping to make our decisions. In

the end we may be able to fine tune our outputs better through even more accurate variable rate technology."

In the past if we grew a 4 ton crop it was pretty good, now they are commonplace and we are chasing 5 and 6 ton crops. Maybe we will catch up to Europe and grow 8 ton crops consistently, the southern Victorian farmers are nearly achieving yield like this. Varieties are getting better. With the machines, they were just gearing and wheels, but now they are so advanced. There is still more we can learn about soils and fungi, humates, fulvic acid, and bugs through integrated pest management. I am always looking to learn more on this."

Luke: "Technology, my early memories of the farm are doing the yield monitors in the early 90's. Seeing how far this technology has come in this period of my life is exciting. Planting is what I am excited about, getting the technology so you can know exactly where each seed is planted. It is being worked on in the USA with corn planting, hopefully it will be adaptable to grains."

"I want to see how we can do more with the same amount of land. This year showed that with very low rainfall we had good yield and good water use efficiencies. We will do more with less in the future. Efficacy, with precision spraying we will use less chemicals, and it will cost less to control weeds."

### **The Rethus Team.**

Finally, we wrap up with the knowledge that on a family farm, family is the centre of it. Chris and Geoff, Michelle and Tim and Charlene and Luke, and now Claire, Heidi, Fred, and Lucy. Chris and Geoff also have Justin and Jacinda, who work off farm. Thank you for sharing your story.



# RELIABELT HIGH CAPACITY BELT CONVEYORS

Knowing the grain handling industry requires speed, efficiency, value for money and quality from their machinery, Emmetts are now selling reliaBELT high capacity belt conveyors.

The feature that increases the reliaBELT's capacity beyond that of industry standard belt conveyors is the belt width. A 20" inch belt in a 10" tube means the belt wraps around  $\frac{3}{4}$  of the tube, thus carrying the product and minimizing damage. reliaBELT can move 4 tonne per minute which surpasses any of 10" belts on the market meaning less cost per ton moved.

The innovative design of the one belt conveying system means fewer bearings (10) and rollers (5) with no "S" drive roller off the beavertail. Direct drive eliminates jack shafts or extra belts, pullies, gearboxes, idle shafts coming out of the engine.

## Benefits:

- Pinch drive roller system – allows the belt to relax thus increasing the life of the belt
- Powder coat paint finish
- Unique tube design- no cables

- Winch adjustable directional spout up to 8' - allows maximum loading
- Drop down doors allows ease of cleaning
- Hydraulic scissor lift on 45' (13.7m) and 55' (16.7m) models
- Scissor lift frame allows for increased reach from wheels to directional spout-increasing reach with a shorter tube.
- Joystick control steering allows pinpoint accuracy in bin and yard movement.
- Long 5' "beavertail" intake and wide exposed belt allows product to gain momentum before inclining and increases reach when out loading large diameter bins or filling airseeders, spreaders or containers with a shorter conveyor.
- Low profile hopper allows for almost any application.
- Wide side rubbers eliminating spillage
- Only 5 rollers and 10 bearings
- Fully enclosed belt with clean out ports
- Direct drive
- Self-adjusting belt tensioning
- Collapsible hopper
- Electric clutch
- Removable drawbar hitch
- High horsepower engine equals high capacity



**Above: Large 5' Beavertail intake.**

- From 45' to 120' length (13.7m to 36.5m)
- 80' to 120' A frame full hydraulic lift- No cable lift- lowers down for ease of service
- Diesel engine OPTIONAL
- 6" drive roller upgrade OPTIONAL







# WE'LL DO THE CHASING FOR YOU

Tired of tracking down obscure parts to keep your seeding equipment up to standard?  
Let us help you.

- Points
- Discs
- Tillage Parts
- Sweeps
- Coulters
- Air Seeder Parts
- Boots
- Hoses
- Press Wheels

We can chase up all of your seeding needs, for all brands.





# SEEDING INSPECTION PROGRAM



## AIR CART INSPECTION

- Meters on Cart
- Complete Drive Train Check
- Hydraulic & Air Systems
- Electrical System & Monitor
- SeedStar Software
- Warranty Inspection if Applicable

**\$440** INC GST

## TILLAGE INSPECTION

- All Seed Boots & Hoses
- Evaluate Tynes
- Opener Discs
- Scrapers & Press Wheels
- Hydraulic & Air Systems
- Frame
- Warranty Inspection if Applicable

**\$12** (PER TYNE / OPENER)  
INC GST

Must be booked in by 31st March 2020. 50% off travel kilometres applies up to 60km from an Emmetts dealership. All machines inspected get in-season priority. 12 month warranty on John Deere parts fitted by an Emmetts technician only. All pricing includes GST.



# QUALITY USED EQUIPMENT



2011 Massey Ferguson  
7495, 3039 Hrs, 185HP  
# 1000325 **Kadina**  
**\$99,000**



2013 New Holland  
T4060F, 1496 Hrs  
#451525 **Swan Hill**  
**\$60,500**



2010 Case IH Magnum  
335, 6200 Hrs  
#1000069 **Rupanyup**  
**\$132,000**



2004 Case IH MXM190,  
6070 Hrs, 190hp  
#1000259 **Rupanyup**  
**\$66,000**



Same Dorado 75  
72hp, 4385 Hrs  
#801053 **Renmark**  
**\$16,500**



2001 Goldacres 4030  
4000L x 30M Sprayer #  
7152484 **Rupanyup**  
**\$22,000**



Goldacres 5030  
Sprayer  
#100149 **Pinnaroo**  
**\$71,500**



2009 Goldacres Prairie  
5000/30  
#1000349 **Rupanyup**  
**\$60,500**



Hardi Saritor - Self  
Propelled Sprayer  
#1000379 **Pinnaroo**  
**\$302,500**



2009 Goldacres Advance  
Trailing Sprayer, 6500L,  
33m Boom #152427 **Rupanyup**  
**\$71,500**



2016 Hardi Commander  
8000L/48.5MT Boom  
#1000026 **Swan Hill**  
**\$175,000**



2012 Hardi Commander  
Trailing Sprayer, 8000L,  
36m Boom #252901 **Horsham**  
**\$104,500**



2008 Hardi Navigator  
5030 Trailing Sprayer,  
5000L, 30m #252662 **Horsham**  
**\$31,900**



Custom Cropstalker  
Shielded Sprayer  
#40-15-30 **Horsham**  
**\$99,000**



2013 Gason Para-Maxx  
Tow-Behind Seeder  
#152459 **Rupanyup**  
**\$275,000**



2002 Morris 7300 Two  
Bin Tow-Behind  
#5803006 **Pinnaroo**  
**\$37,400**



Horwood Bagshaw  
Scaribar Tow-Behind  
Seeder #5803249 **Parndana**  
**\$60,500**



1999 Horwood  
Bagshaw 4000 Seeder  
#451539 **Swan Hill**  
**\$22,000**



Horwood Bagshaw  
4000 Tow-Behind  
Seeder #152398 **Rupanyup**  
**\$26,500**



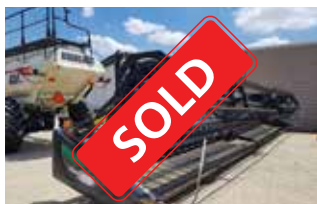
2002 Morris 7300 Two-  
Bin Tow-Behind Seeder  
#5803006 **Pinnaroo**  
**\$37,400**



2015 Macdon FD75-D  
Flex Draper  
#1000122 **Swan Hill**  
**\$98,000**



2016 Knuckey Pick-Up  
16'  
#152456 **Rupanyup**  
**\$38,500**



2014 Macdon D65  
#451592 **Swan Hill**  
**\$104,500**



2017 Midwest 45  
45ft Durus Premium  
#1000227 **Renmark**  
**\$108,900**

Terms and conditions apply. Every effort has been made to ensure details are correct as of 26/02/2020. Prices shown are based on no trade in and are inclusive of GST. Attachments in the photos may not be included.





1999 Case IH 2366 Axial Flow w/ 1020 30' Flex #1000129 **Horsham \$72,600**



2016 Claas Lexion 770TT 896hrs # OBCSB770 **Rupanyup \$495,000**



2012 John Deere 640FD Flex Draper #OBCRETHUS **Horsham \$87,450**



2002 John Deere 936D 36ft Front #SH936D-C **Swan Hill \$36,000**



2010 John Deere 9670 STS 2084 Hrs #803203 **Swan Hill \$275,000**



2015 John Deere S670 650 Hrs #7152450 **Rupanyup \$484,000**



2010 Case IH Magnum 335, 6200 Hrs #1000069 **Rupanyup \$132,000**



2004 Case IH MXM190, 6070 Hrs, 190hp #1000259 **Rupanyup \$66,000**



2016 John Deere R990R & F350R Rotary Mowers #252612 **Horsham \$126,500**



2013 John Deere 6170R, 5109 Hrs, 170hp #5803217 **Roseworthy \$96,800**



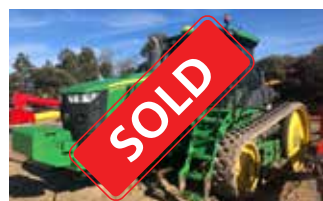
2006 John Deere 956 Mower Conditioner #451492 **Swan Hill \$41,800**



2002 John Deere 6920 6399 Hrs #6451305 **Swan Hill \$71,500**



2009 JD 131 & 388 Front Mount, Twin Wing Flail Mowers #252541 **Horsham \$46,200**



2016 John Deere 8370R 3300 Hrs, 375HP #1000224 **Swan Hill \$285,000**



2018 John Deere 9470R 1080 Hrs, 470hp #1000256 **Kadina \$363,000**



2017 John Deere 9570RX 1955 Hours #1000344 **Horsham \$499,400**

## Looking for quality pre-owned equipment finance?

At John Deere Financial, we know the equipment. We know how it's used, and what it means to you. That's why we're committed to making sure your financing works as hard and reliably for you as your equipment does. We do this by offering — **Competitive rates, low fees, flexible payments, a fast, easy application process and a knowledgeable, friendly team who are ready to help.**

**For a great quote on pre-owned equipment — come in and see us today.**

Terms and conditions apply. Every effort has been made to ensure details are correct as of 2/6/2020. Prices shown are based on no trade in and are inclusive of GST. Attachments in the photos may not be included.





## RO-XL 1875

- 3 x 675L Extensions (3900L Capacity)
- Hopper Cover
- Hydraulic Shutter Control
- 36m Vane Kit
- Mudguards
- Road Safety Lights

Standard 1875L models also in stock

IN STOCK NOW!



ARRIVING SOON!

## THE NEW RO-XXL

- Spreading width (m) 24 - 45\*
- Output (kg/min) 10 - 540
- High speed RotaFlow spreading system
- Fully automatic weighing system with unique reference sensor
- Unique GEOSPREAD system with two electric actuators
- ISOBUS 11783 compatible for easy plug and play
- Optional electric hopper cover available

\* Depending on fertilizer type and type of vane

Model pictured with optional hopper extensions and cover

PFG AUSTRALIA

[www.vicon-machinery.com.au](http://www.vicon-machinery.com.au)

# 0% p.a. Finance Available\* on Precision Ag Technology

Valid on Precision Ag Technology  
Approved commercial applicants only  
Based on 25% deposit and 36 month term

Offer available from 1 February 2020 through 30 April 2020

\*Conditions apply. John Deere Financial Limited. Approved commercial applicants only. Based on 25% deposit and 36 month term. Fees and charges apply. Expires on 30/04/20.

1300 628 596  
[www.emmetts.com.au](http://www.emmetts.com.au)



JOHN DEERE

emmetts 



# SUPERIOR - SPRAYING - EFFICIENCY

Experience the difference, Goldacres self-propelled sprayers with the direct drive system are efficient by design, durable by nature.

The drive system operates at lower engine RPM which equates to lower cabin noise, less fuel usage and a less stressed drive line and direct power to the ground.

- ▶ 6000L tank capacity
- ▶ 30, 33, 46 or 42m boom widths



## G6 Crop Cruiser

## Prairie Pro



# SPRAY - LIKE A - PRO

Renowned for its rugged construction, class leading boom ride, cutting edge performance and standard features, the Prairie Pro will transform your spraying operation.

- ▶ 5000, 6500, 7500 or 8500L tank capacities
- ▶ 24 to 48m boom widths

# CAPACITY - BROADACRE - KING

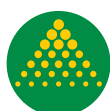
The G8 Super Cruiser features a massive 8000L tank capacity with TriTech booms up to 48m.

A rigid chassis, suspension & mechanical driveline system provides the machine's foundation & delivers unparalleled driving and spraying dynamics.

- ▶ 8000L tank capacity
- ▶ 36, 42 or 48m boom widths



## G8 Super Cruiser



**GOLDACRES**



**goldacres**



# SLASH

DOWN SPRING  
WITH A

**HOWARD**

EHD 210

## EHD SLASHER THE CONTRACTOR'S CHOICE

- Front and rear chain guards
- Two year gearbox warranty
- Unlimited horsepower on 1.8m, 2.1m and 2.4m
- EHD HP rating unlimited provided friction plate clutch is correctly adjusted

## EHD-E SLASHER THE ALL-ROUNDER

- Uses same body and blade beam as EHD
- Recommended for tractors up to 150hp
- Available in 1.8m, 2.1m and 3.0m
- Ideal for scrub, regrowth and overgrown paddocks

EHD-E 300

NUGGET 150

## NUGGET SLASHER THE FARMER'S CHOICE

- Front chain and rear rubber debris guards
- Outperforms everything in its price class
- Budget priced slasher with a HOWARD pedigree
- Available in 1.2m, 1.35m, 1.5m, 1.8m and now 2.1m

Contact your local Emmett's representative for all your slashing requirements.  
For more info visit [www.howard-australia.com.au](http://www.howard-australia.com.au)



# MASCHIO

# GASPARDO

## VELOCE SPEED DISC



**2m model now available**

The VELOCE is a medium weight disc assembly ideal for managing crop residues and refining the land to prepare the seed bed and bury fertilizer. Thanks to 800 mm of rank spacing & 510mm disc's, optimal soil flow is assured in every working condition thereby allowing work speeds between 12 and 15 Km/h to the benefit of efficiency and operating performance. The disc's are mounted individually using a silent block system and AGRIHUB which feature special opposed taper bearings. The bearing is protected against dust, mud and dirt by a special gasket and a bolted cover to ensure maximum reliability. The hub is designed to ensure the best Performance and minimal maintenance: there is no need to grease the individual discs at regular intervals! Fixed frame versions are available measuring 2 to 4 m and are fitted with cage rollers as standard making it easy to achieve the correct work depth and flat finish. 6m Folding trailed models are also available.

## B SERIES ROTARY HOE



With the B model, MASCHIO GASPARDO introduces its range of professional equipment, high-end machines that are continuously being improved on both the technical and mechanical front. The heavy-duty frame, PTO shaft with slip clutch and multi speed gearbox make these rotary tillers hardwearing and reliable, ideal for mid-sized tractors. Maintenance is greatly reduced via the use of an oil bath for the side drives and duo cone seals on the rotor, which features 6 blades per flange with outer facing inwards to reduce clogging.

The B series rotary hoe is available in both 180 and 205 sizes.

## BELLA MULCHER



The BELLA 190 has been handpicked by the team at Emmett's as it is ideal for vineyards and orchards with its overall width of 205cm and hammers as standard it will make light work of pruning's as well as intensive mulching on grass and cover crops. To reduce both vibrations and power draw, which in turn extends the machine's service life, each individual rotor is balanced electronically and are mounted with extra strong rotor mounts. These mounts are made from hot-formed steel and are mounted inside the end plate to protect the bearings, which are a barrel race design to withstand punishing radial loads and knocks, offering unbeatable strength to handle even the toughest jobs.

**CONTACT YOUR LOCAL EMMETT'S REPRESENTATIVE TO ARRANGE YOUR DEMO TODAY**



# BIG SAVINGS ON OUR SMALL TRACTORS

All in stock now and available for immediate delivery!

# 0%\* P.A. FINANCE



**1023E**

Tractor Only **\$13,999**  
Add for FEL with 4-in-1 bucket & ballast box **\$ 6,000**  
**Total Package \$19,999**

• 23 HP • 4WD • Hydrostatic Transmission • 3PL • PTO



**5050E**

Tractor Only **\$19,499**  
Add for FEL with 4-in-1 bucket **\$10,500**  
**Total Package \$29,999**

• 50 HP • 4WD  
• Top Shift Synchronised (TSS) Transmission  
• 3PL • PTO

**\$15,499** Tractor Only  
**\$ 6,000** Add for FEL with 4-in-1 bucket & ballast box  
**\$21,499** Total Package

• 25 HP • 4WD  
• Hydrostatic Transmission • 3PL • PTO



**1025R**

**\$25,999** Tractor Only  
**\$13,000** Add for FEL with 4-in-1 bucket  
**\$38,999** Total Package

• 55 HP • 4WD • 9/3 Shuttle Transmission  
• 3PL • PTO



**5055E**



**2025R**

Tractor Only **\$18,499**  
Add for FEL with 4-in-1 bucket & ballast box **\$ 6,000**  
**Total Package \$24,499**

• 25 HP  
• 4WD  
• Hydrostatic Transmission  
• 3PL • PTO

**\$40,999** Tractor Only  
**\$13,500** Add for FEL with 4-in-1 bucket  
**\$54,499** Total Package

• 12F / 12R PowerReverser™ Transmission  
• 55 HP • 4WD • Air-Conditioned Cab  
• 3PL • PTO



**5055E CAB**

**\$20,999** Tractor Only  
**\$ 7,000** Add for FEL with 4-in-1 bucket & ballast box  
**\$27,999** Total Package

• 38HP • 4WD  
• Hydrostatic Transmission • 3PL • PTO



**3038E**

Tractor Only **\$40,999**  
Add for FEL with 4-in-1 bucket **\$13,000**  
**Total Package \$53,999**

• 75 HP • 4WD  
• 12F / 12R PowerReverser™ Transmission  
• 3PL • PTO



**5075E**



**4049M**

Tractor Only **\$25,499**  
Add for FEL with 4-in-1 bucket & ballast box **\$ 8,500**  
**Total Package \$33,999**

• 49 HP • 4 Cylinder Engine • 4WD  
• 12F / 12R PowerReverser™ Transmission  
• Hydrostatic Transmission Available • 3PL • PTO



**5075E CAB**

Tractor Only **\$46,999**  
Add for FEL with 4-in-1 bucket **\$13,500**  
**Total Package \$60,499**

• 75 HP • 4WD  
• 12F / 12R PowerReverser™ Transmission  
• Air-Conditioned Cab • 3PL • PTO

\*Conditions Apply. Finance available through John Deere Financial Limited to approved commercial applicants only. Based on a 40% deposit, GST back and a 36 month term. Fees and charges apply. If not amended or withdrawn earlier, the promotion expires on 31/03/2020. Prices shown in Australian dollars inclusive of GST and are based on no trade. Price may include pre-delivery, freight, assembly and finance application fee as dealer charges. Extra charges apply to sales outside the dealer area. Photos shown are for illustrative purposes only and attachments are not included. Valid while stocks last only.

1300 628 596  
www.emmetts.com.au



JOHN DEERE

emmetts

HORSHAM KADINA MURRAY BRIDGE OAKBANK PARNDANA PINNAROO RENMARK ROSEWORTHY RUPANYUP SWAN HILL WARRACKNABEAL