



Sustainable Solutions for Health, Productivity and the Environment.



# Sustainable Boiler System Program

# RMC's Sustainable Boiler Water Program

The goal of all boiler water programs is to maintain clean heat transfer surfaces. Beyond preventing insulating deposits, the program must protect system metals from the damaging effects of corrosion.

## Truly Sustainable

Our water management programs are designed to protect and enhance equipment life while providing energy and cost savings through improved heat transfer efficiency. Our goal is to build sustainable programs for water management by focusing on financial benefits, environmental stewardship and improvements to workplace health, safety and productivity.

**Sustainable Solutions have a triple bottom line payoff.**



### People

- Training
- Automation
- Reduced health risks
- Testing



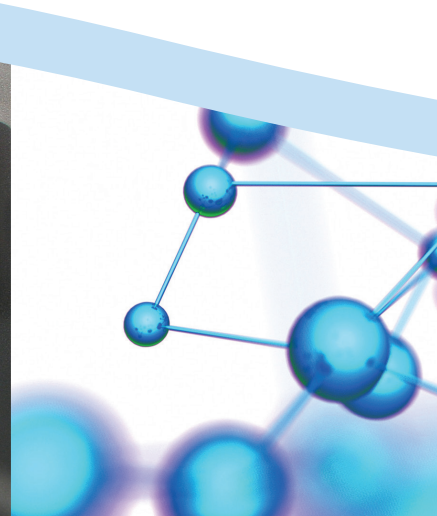
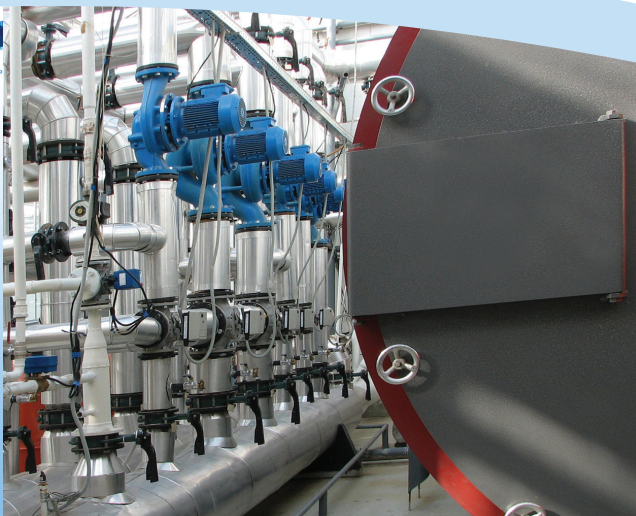
### Planet

- Energy savings
- Water savings
- More responsible chemicals



### Profit

- Portion control
- Energy savings
- Water savings
- Reduced fuel usage
- Asset protection
- Productivity improvements



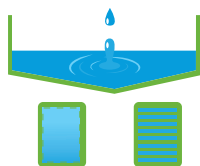


# RMC Boiler Program



## Source Water Analysis

- Determine level of impurities
- Impact on system



## Pre-treatment Evaluation

- Softeners
- Filters
- Reverse osmosis
- De-Alkalyzers
- Ion exchangers



## Feedwater Tank or Deaerator

- Remove Oxygen
- O<sub>2</sub> scavengers
- Equipment optimization



## Boiler Program

- Prevent deposits
- Inhibit corrosion
- Steam line treatments
- Antifoams
- Automatic feed equipment
- Maximize efficiency
- Automate

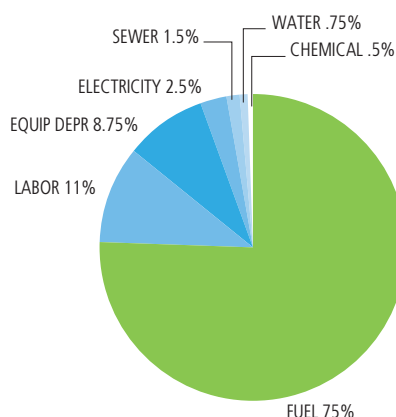


## Process

- Prevent wet steam
- Antifoams
- Prevent deposition
- Inhibit corrosion

## Cost of Operating a Boiler

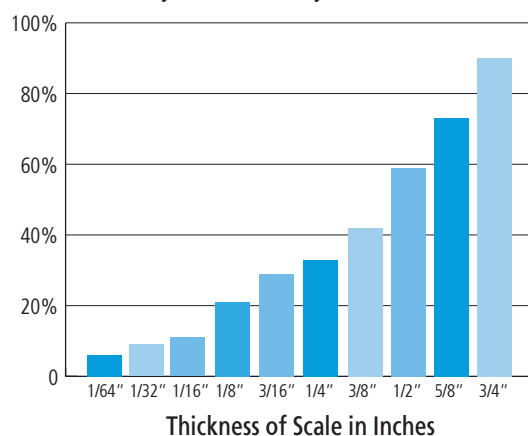
Did you know that less than 1% of boiler operating cost is spent on chemical treatment? In fact, fuel is the highest operating cost—75%! Our specialists are trained to develop treatment programs that lower fuel costs by providing energy savings and a positive return on your investment.



## Water and Energy Savings/Minimization of Production Downtime

- Reduced maintenance
- Elimination of unscheduled system downtime
- Improved fuel to steam efficiency
- Lower energy costs

Efficiency Loss Caused by Scale Accumulation



# The RMC Difference

## **Assess and Survey**

We will conduct an extensive survey and evaluate current conditions.

## **Plan and Design Program**

A water management program designed specifically for your system, including chemicals, dosages, feeding techniques and operating standards with benchmarks for measuring success and timing of all segments of the program.

## **Implement Solution**

Training for your team to introduce the treatment plan.

## **Monitor**

Our technical specialists work with your operating personnel to ensure that proper control limits and operating parameters are maintained. Actual results are used to document savings.

## **Environmental Health and Safety**

Material Safety Data Sheets are available online at [www.rochestermidland.com](http://www.rochestermidland.com) in both English and Spanish, and are accessible 24 hours a day, seven days a week. RMC provides on-site client training in safe handling of our products. Many product formulations meet FDA and potable standards, as well as environmental discharge requirements. Letters of guarantee are available upon request.



## **Plant Wide Solutions**

We have the unique ability to serve as a single source supplier for your specialty chemical requirements. From food plant sanitation to water treatment to environmentally safe cleaners, we bring a breadth of programs and application expertise that others cannot match. We look at your whole process to determine the best solution.



**Call us today at 800.RMC.4448  
or visit [www.rochestermidland.com](http://www.rochestermidland.com)**

