

RP Data Professional

Enhanced Mapping



What you will learn in this guide

This guide will show you how to use RP Data Professional enhanced mapping capabilities to research and present details about a target property and its surrounding area.

- ▶ Map Functionality
- ▶ Map Layers
- ▶ Drawing Tools

Enhanced Mapping

Introduction

The mapping inside RP Data Professional doesn't just let you see where a property is located – it provides you with a range of tools to measure distance, measure area and overlay dozens of valuable data points to give you a rich visual picture of key property attributes, situation and surrounding market performance.

Map Functionality

Multiple mapping layers can overlay Property Data, Sales Themes, Listing Themes, Target Property and Area Research category data.

Open Map

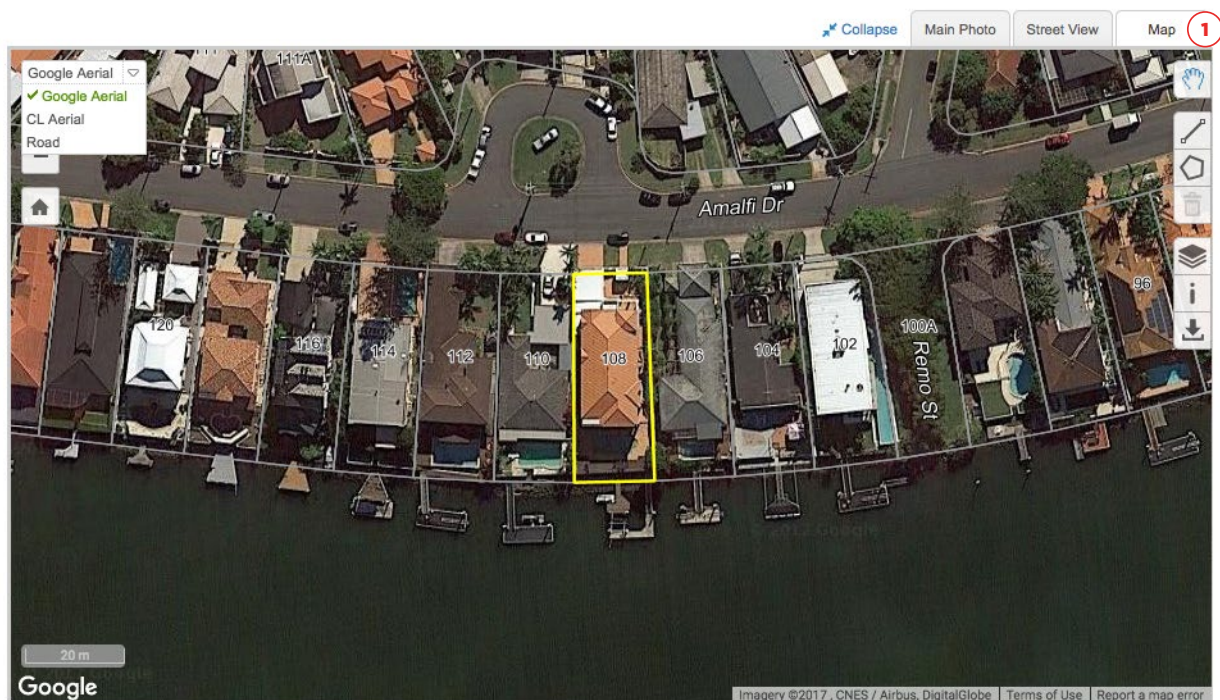
- ▶ Search for a property address
- ▶ Go to the Map tab (1)

Choose Your Map View

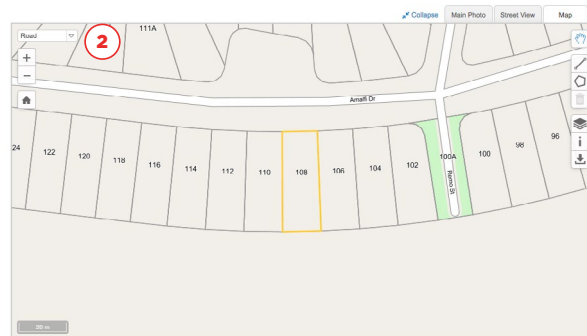
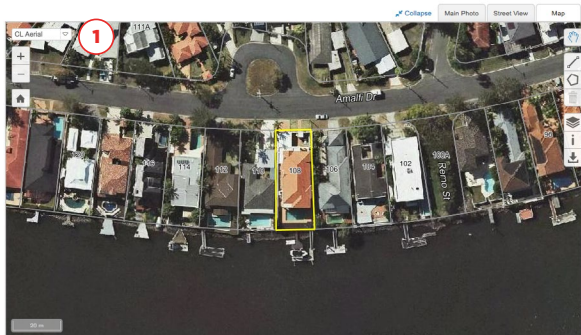
- ▶ *Google Aerial imagery* is the default map view and allows you to zoom out further to get a full view of large rural properties or larger views of suburbs/regions

108 Amalfi Drive Surfers Paradise, QLD, 4217

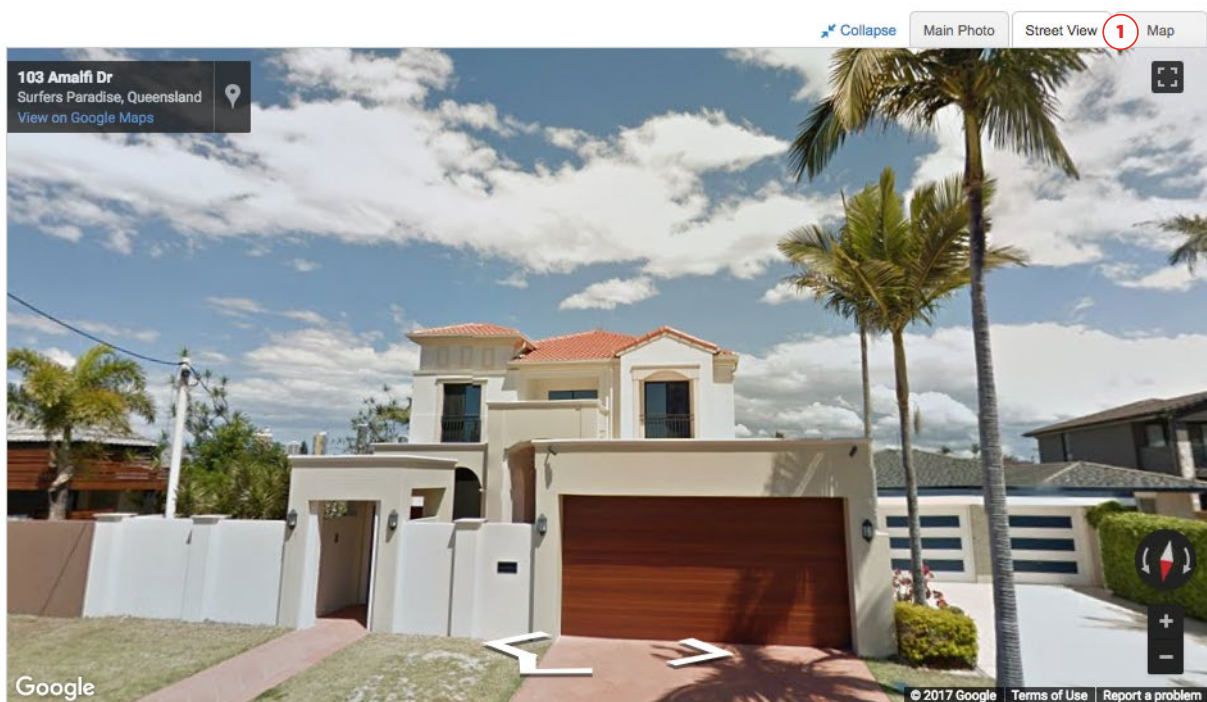
5 5 4 673m²



- *CoreLogic Aerial imagery* allows you to zoom out to 200m (1)
- *Road map view* allows you to zoom out to 500km and see parcel boundaries and labels in rural areas (2)



- *Google Street View* is also available in a separate tab (1)



Map Controls

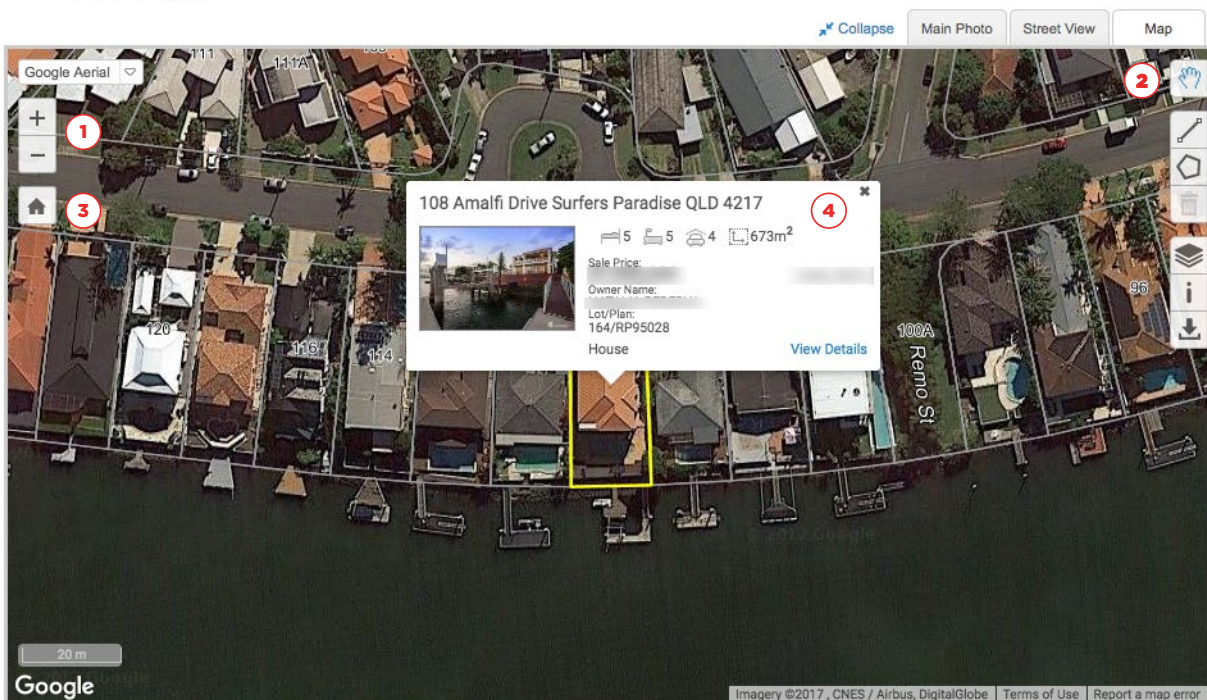
- ▶ Zoom in and out with the [+] and [-] buttons (1)
- ▶ Use the Hand tool to pan your map (2)
- ▶ Place your target property back in the centre of your map with the Home button (3)

Property Details Quick View

- ▶ Click on any parcel for a quick view of key details and attributes for that particular property (4)

108 Amalfi Drive Surfers Paradise, QLD, 4217

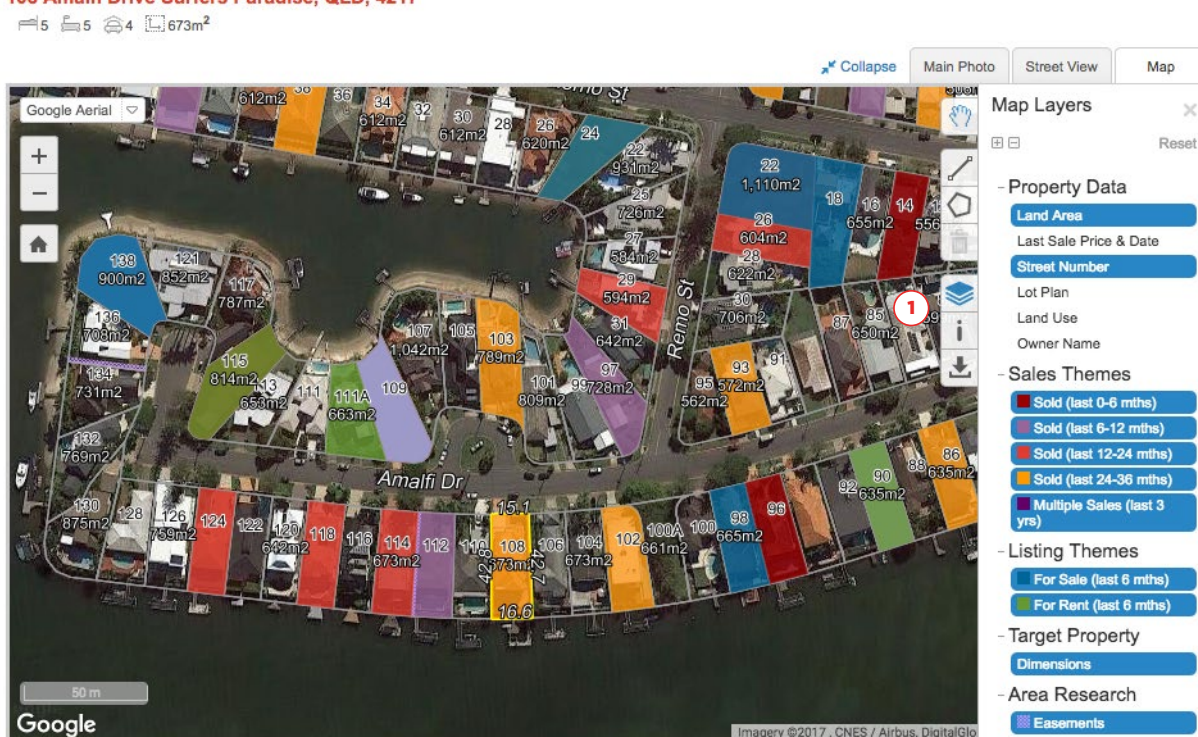
5 5 4 673m²



Map Layers

Map layers are data overlays that show you important information in the map view. To view layer options, select the Map Layers icon (1) from the right side menu. The Street Number layer is automatically activated. Multiple layers can be selected and will remain active until you switch them off.

108 Amalfi Drive Surfers Paradise, QLD, 4217



Property Data

- Land Area
- Last Sale Price & Date
- Street Number
- Lot Plan
- Land Use
- Owner Name
(not available in VIC or NT)

Sales Themes

- Sold (last 0-6 months)
- Sold (last 6-12 months)
- Sold (last 12-24 months)
- Sold (last 24-36 months)
- Multiple Sales (last 3 years)

Listing Themes

- For Sale (last 6 months)
- For Rent (last 6 months)

Target Property

- Dimensions

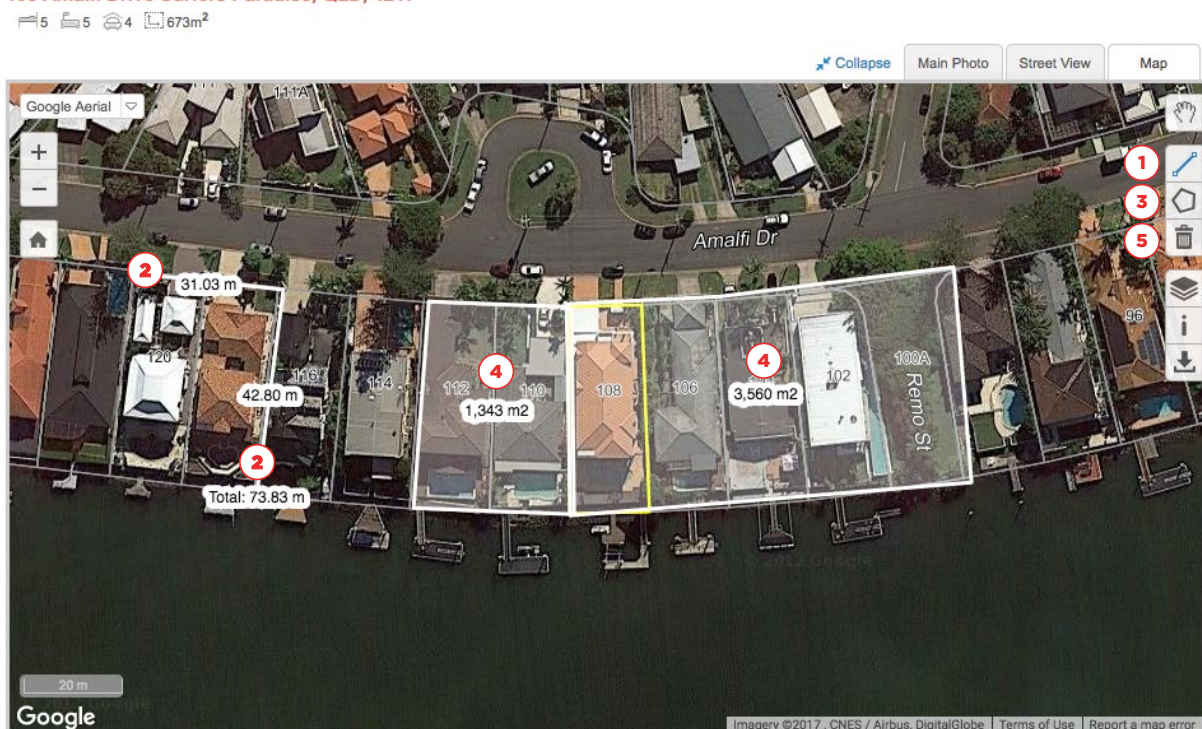
Area Research

- Easements
- Contours
- Local Authority
- Suburb

Drawing Tools

Tools that allow you to draw on the map are available to assist with measuring distance and area. Multiple measurements can be done on a map.

108 Amalfi Drive Surfers Paradise, QLD, 4217



Measure Distance

- ▶ Select the Measure Distance tool to initiate a line drawing (1)
- ▶ Click once to start the line, click again for each time you want to change its direction and double click to finish the drawing
- ▶ The distance in metres will be displayed along each line (2)

Measure Area

- ▶ Select the Measure Area tool to initiate drawing a shape (3)
- ▶ Click once to start the drawing, click again for each point on the shape and double click to finish the drawing
- ▶ The total area in metres squared is shown within the shape (4)

Delete All

- ▶ Use the Delete All icon to remove the drawings you've added to your map view (5)

Download Map

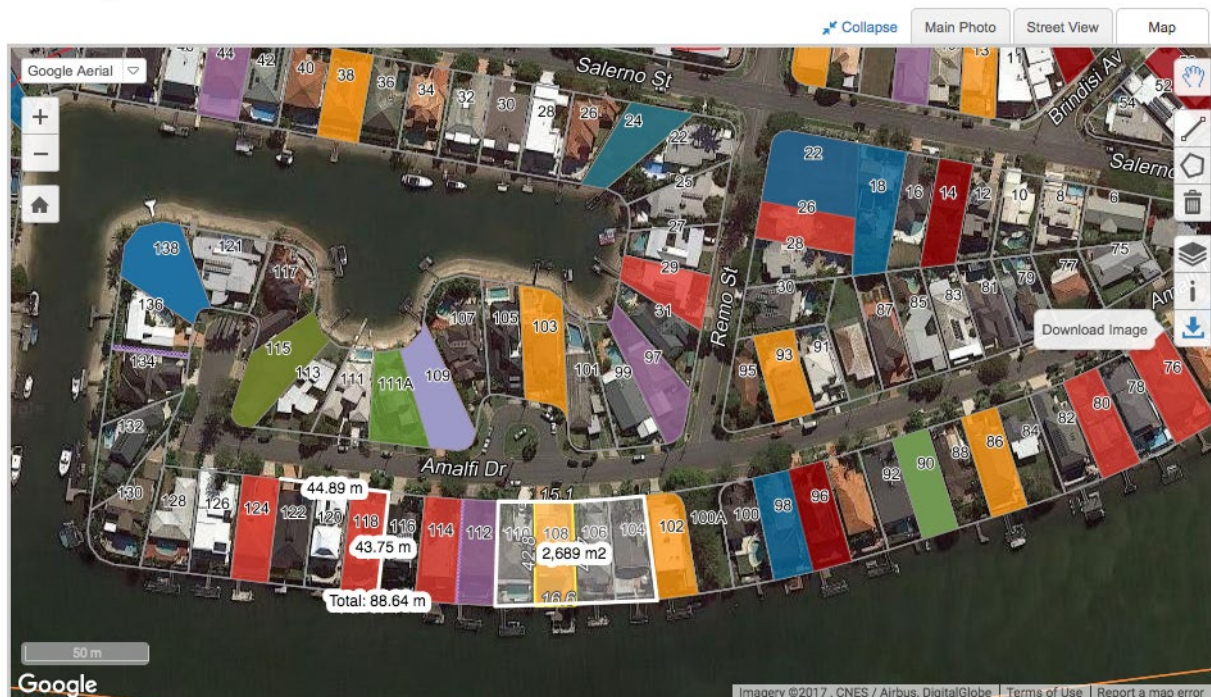
You can download an image of the map for your own records or presentation in your reports that will include any data layers that are turned on, as well as any drawings in the current view.

Download

- Click the Download Image tool (1)

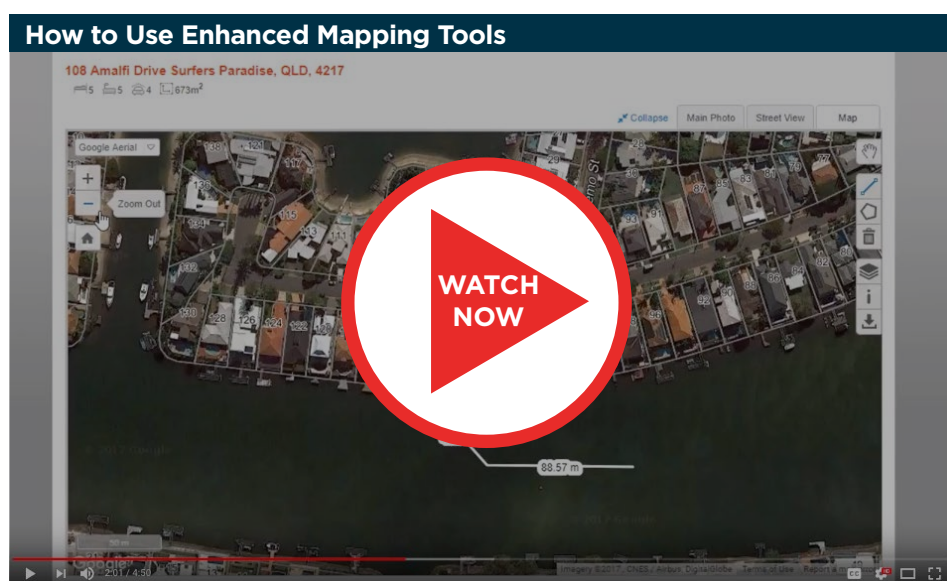
108 Amalfi Drive Surfers Paradise, QLD, 4217

5 5 4 673m²



“How to” Videos

You can access more information on how to use enhanced mapping tools by watching our CoreLogic Academy Video Series.



 youtu.be/_RM7yZ3x1D8

For more information please call 1300 734 318 or email ask@corelogic.com.au

© 2017 CoreLogic Asia Pacific. All rights reserved.

CORELOGIC and the CoreLogic logo are New Zealand and Australian trademarks of CoreLogic, Inc. and/or its subsidiaries.