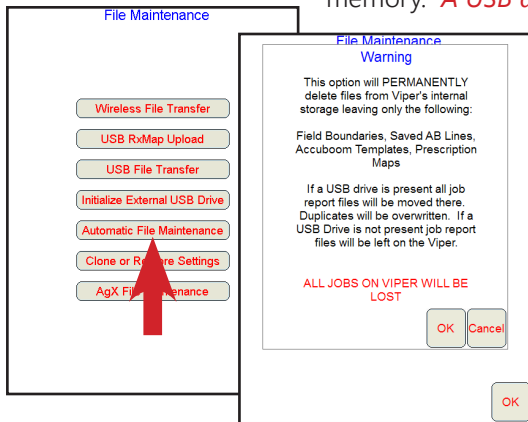
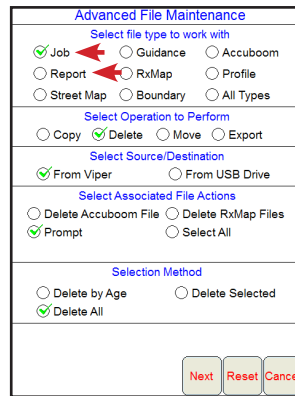


DELETING OLD JOB FILES (CLEARING MEMORY)

Automatic File Maintenance is the simplest method to remove old job files from memory. *A USB drive is required as some files will be loaded to it.* These files, however, can be deleted from the USB drive when finished. With a USB drive in the Viper Pro, select the **Menu, File Maint.**, then **Automatic File Maintenance** buttons. Select the **OK** button. Job files cannot be recovered after this process!

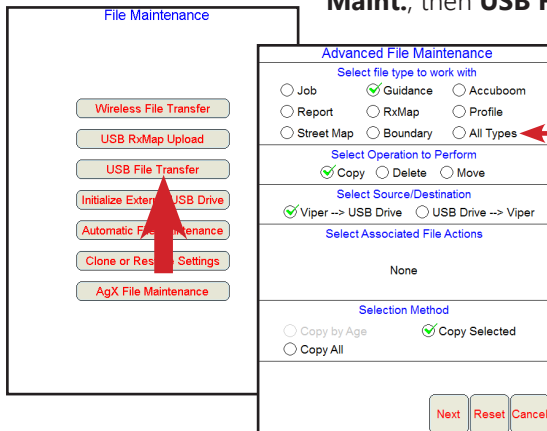


If a USB drive is not available then select the **USB File Transfer** button instead of the **Automatic File Maintenance** button on the *File Maintenance* page. Select *Job, Delete, From Viper*, choose associated file types or *Prompt*, then *Selection Method*. Select the **Next** button to choose the job file to delete or to complete the delete process. Job files cannot be recovered after this process! Next, select *Report* and complete the same steps as with the *Job* deletion.



IMPORTING/EXPORTING FILES

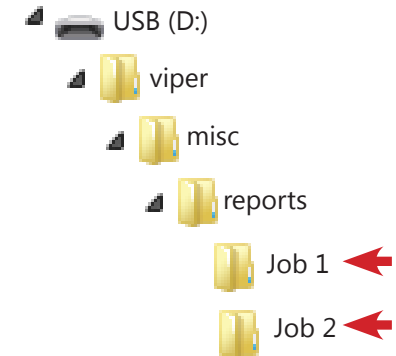
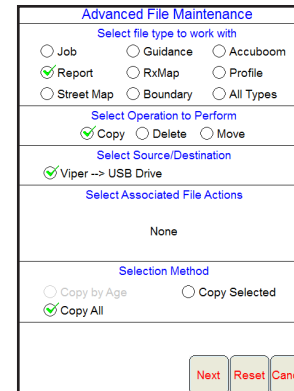
Files can be imported into and exported from the Viper Pro. Select the **Menu, File Maint.**, then **USB File Transfer** buttons. With a USB drive in the Viper Pro, select the file type to be imported or exported, choose *Copy* or *Move*, the source to destination direction, and if just certain files or all files. Select the **Next** button to complete the transfer process.



All files can be imported or exported at once by selecting the *All Types* for the file type to work with.

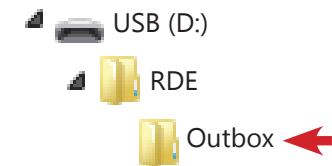
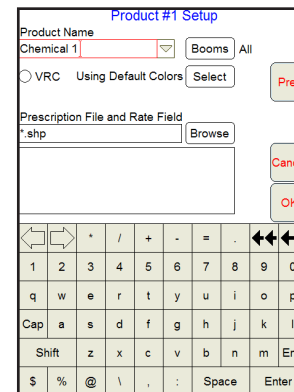
CREATING A SHAPEFILE & BITMAP REPORT

Select the **Menu, File Maint.**, then **USB File Transfer** buttons. With a USB drive in the Viper Pro, select *Report, Copy, Viper --> USB Drive*, then *Copy Selected* or *Copy All*. Select the **Next** button to choose which report or to complete the report process. Both the shapefile and bitmap reports will be created and saved to the **viper, misc, reports, specific job** folder.



CREATING A JDP REPORT (SLINGSHOT)

Select the **Menu, File Maint.**, then **USB File Transfer** buttons. With a USB drive in the Viper Pro, select *Job, Export, Viper --> USB Drive*, then *Export Selected* or *Export All*. Select the **Next** button to choose which report or to complete the report process. The JDP report will be created and saved to the **RDE, Outbox** folder. The zip report files can then be uploaded to the slingshot portal.



JDP report files can be sent to the slingshot portal upon job closing by selecting the **Menu, File Maint.**, then **Wireless File Transfer** buttons. Select either the *Automatically* or *Prompt* option.

FILE MAINTENANCE