

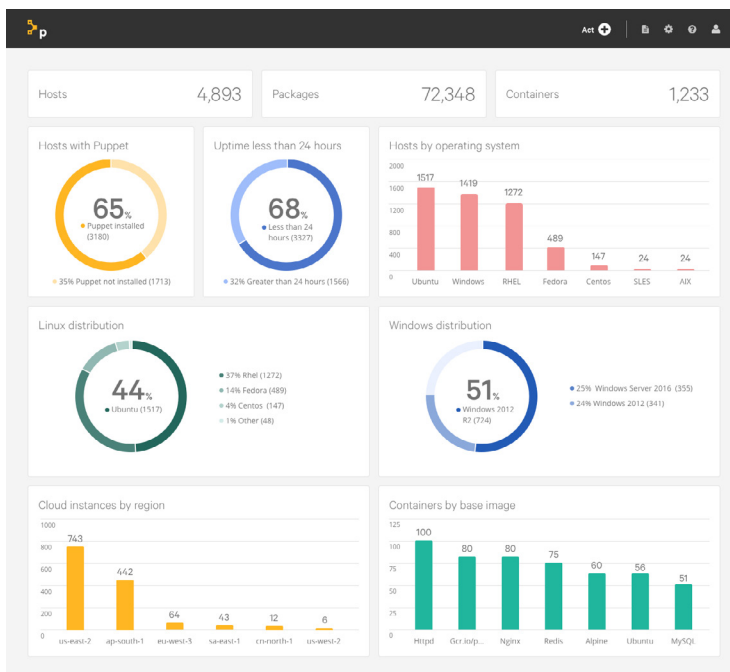
Puppet Discovery™

Know what you have. Know where to start.

Organizations continue to struggle to understand the resources they currently have and how to bring them all under management. Compounded by resource sprawl, and the increased use of ephemeral environments such as cloud and containerized environments, the cost of not knowing what you have can grow, especially at enterprise scale.

Puppet Discovery makes it easy for organizations to continuously discover the resources they have across their environments. From on-premises environments to cloud and containers, customers gain meaningful insights on their infrastructure resources, deeper visibility into what’s running on those resources, and the ability to take deliberate actions. From a single pane of glass dashboard, Puppet Discovery provides a single source of truth to what’s running, and offers customers the ability to answer the following critical questions:

- How many hosts do we have and what packages are installed on each host?
- What hosts are we not actively managing with Puppet?
- Which operating system versions do we have?
- Which hosts have outdated package versions installed?
- What is installed on my running containers?



Manage resource sprawl, support cloud migration and more

Additionally, Puppet Discovery helps organizations manage resource proliferation, provides a path to cloud migration and DevOps, and reduces vulnerabilities. With Puppet Discovery, customers can:

- Gain full visibility across all systems with the ability to inspect package versions and provisioned user accounts for resources without requiring an agent being installed
- Scan your IT landscape and identify current compute resources and easily deploy a Puppet Enterprise agent
- Audit image types like BYOL or paid instances across multiple cloud accounts and instance sizes to reduce expenditures
- Identify resource sprawl and standardize your infrastructure stack with package management and command tasks to keep systems up to date

How Puppet Discovery works

Puppet Discovery is a stand-alone software application that runs on Windows, Linux or macOS, and uses only SSH, WinRM or your public cloud API credentials to connect to and discover a wide range of resources. With Puppet Discovery you can:

- Install and run our containerized applications in about 5 minutes.
- Get comprehensive visualizations that help you understand the state of your hybrid infrastructure.
- Add your data sources and your machine credentials simply and quickly to start foraging physical hosts, AWS, Azure, Google Compute Platform and VMware instances, and containers.
- Use an interactive dashboard to get answers to key questions about your infrastructure.
- Drill down into specific resources to see installed software and what services are running.
- Instantly bring unmanaged resources under Puppet management by installing Puppet agent.

System requirements

Before installing Puppet Discovery, ensure your system meets these requirements.

Install Discovery

Puppet Discovery can be installed on these operating systems:

Operating System	Versions	System	Prerequisite
Enterprise Linux: <ul style="list-style-type: none">• CentOS• Red Hat Enterprise Linux	7 or higher	<ul style="list-style-type: none">• Architecture: x64• Min Memory: 8GB• Min Storage: 20GB• Min CPUs: 2	Docker CE 17.04.0-ce or higher, or Docker EE 17.06.1-ee or higher.
Debian	8 or higher		Both Docker CE and Docker EE editions include the option to run Kubernetes as a single-node cluster using port 8080 on a local machine
Ubuntu	14.04 or higher		
macOS	10.10 or higher		
Windows	10		IPv6 enabled on the environment.

Network requirements

Important: The ICMP protocol is required for discovering hosts using the network based (IP) discovery.

Operating System	Versions
443 (HTTPS)	Required to install or update to the latest version of Puppet Discovery from: <ul style="list-style-type: none">• storage.googleapis.com• gcr.io
8443 (HTTPS) 8080 (HTTP)	Required to view the Puppet Discovery dashboard. Puppet Discovery requires that no other application is using ports 8080 and 8443
22	Required for SSH authentication on discovered Linux/macOS hosts.
5986 (HTTP) 5985 (HTTP fallback)	Required for WinRM authentication on discovered Windows hosts.

Supported browsers

The Puppet Discovery user interface is supported on the latest versions of the following browsers:

- Google Chrome
- Mozilla Firefox
- Microsoft Edge
- Apple Safari

Discover data

Discover data on these operating systems:

Operating System	Versions	Prerequisite
Enterprise Linux: <ul style="list-style-type: none">• CentOS• Red Hat Enterprise Linux	5 or higher	For the account Puppet Discovery authenticates with, configure bash as the login shell.
Debian	7 or higher	
Ubuntu	12	
macOS	14.04 or higher	
Windows	2012 or higher	Configure WinRM to enable PowerShell remoting.

To learn more about Puppet Discovery visit puppet.com/discovery.