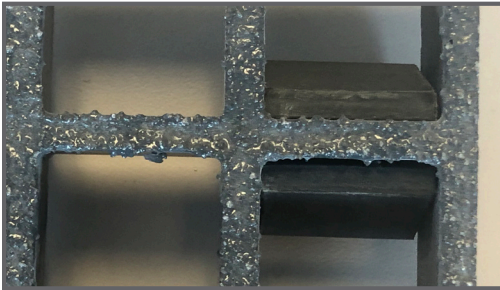


# Non-Penetrating Rooftop Walkway Grating Installation Guide

## Pedestal Layouts

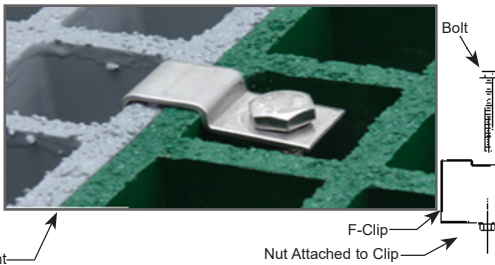
### For 1" & 1-1/2" deep square mesh molded grating

- 100 psf
- Deflection  $\leq 0.25"$
- The standard rubber feet layout will meet or exceed industry standards for typical pedestrian loads.



## Installation Instructions

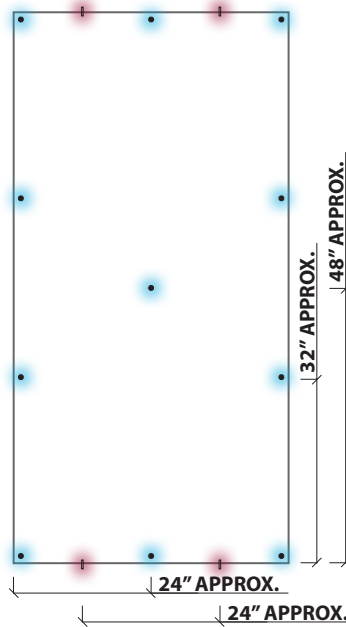
1. Turn the molded grating panel upside down.
2. Use the diagram for the coordinating grating panel size and place the rubber feet onto the bottom of the molded grating and push into place.
3. Repeat for each dot in the diagram.
4. When connecting one panel to another, use two F Clips or SS Hose Clamps to join abutting edges at a maximum spacing of 24" on center. Reference the diagrams to the right for visual description.



Depth	Clip	Bolt Size
1"	F-1	1/4" x 1-1/2"
1-1/2"	F-2	1/4" x 1-3/4"
1" or 1-1/2"	SS Hose Clamp	13/16" to 1-1/2"

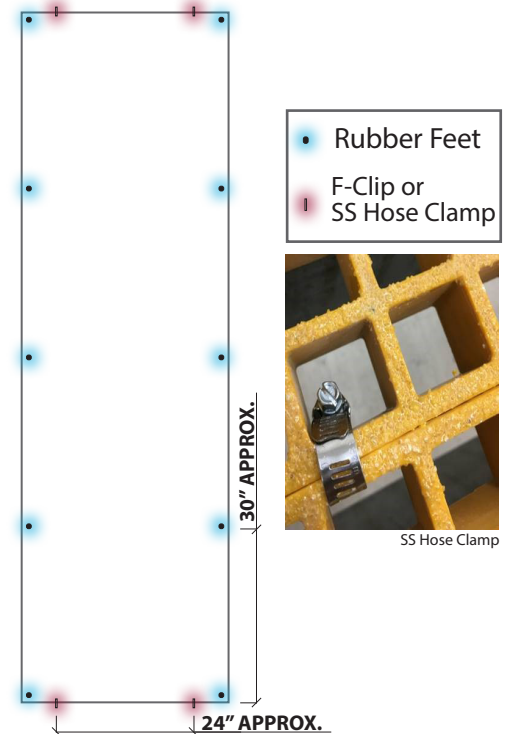
### 4' x 8' Grating Panels

11 Rubber Feet Per Panel



### 3' x 10' Grating Panels

10 Rubber Feet Per Panel

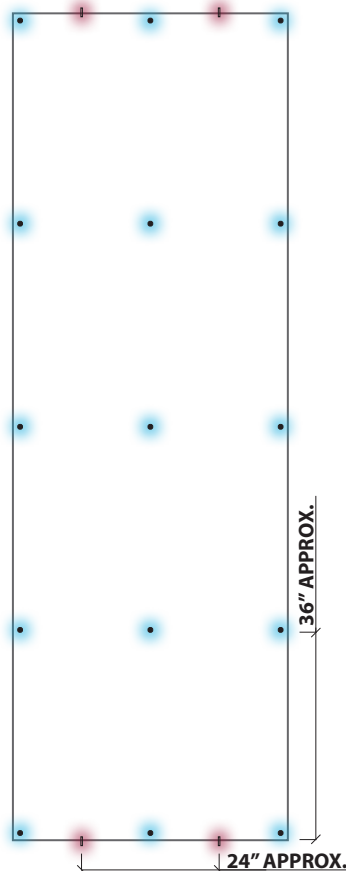


- Rubber Feet
- F-Clip or SS Hose Clamp



### 4' x 12' Grating Panels

15 Rubber Feet Per Panel



### 5' x 10' Grating Panels

12 Rubber Feet Per Panel

