



CONVERGE

Personnel & Services Document

mission statement

We aim to work *with you* to deploy the **most ideal** product development environment for ***your company.***



about converge

Converge offers a new SOLIDWORKS reseller experience. Our mission is to work with you to deploy the most ideal product development environment for your company. Cloud-computing is a game-changer, and we know how to leverage it for you.

We know your pain. Our founders are engineers who have ten product development related patents. We hire people with SOLIDWORKS certifications but also people with real-world product development experience.

We are a SOLIDWORKS Value-Added reseller, and through our partners, we deliver Certified SOLIDWORKS Solutions across all industries. We wrap SOLIDWORKS products

with a host of other services and solutions that give you a menu of options for optimizing your product development environment. Our solution set will empower remote workers, enable seamless collaboration, provide on-demand scaling, remove IT admin burdens, and eliminate the need for technology refreshes; together creating a powerful product development environment that will save you money and help you achieve better business outcomes.

Converge combines Cloud and On-Premise computing and provides the IT managed services to make it work seamlessly. Forget about it, leave the details to us from security to backups and everything in between.

Work Different. **Work Better.**TM

1.833.MY.SW.VAR
1.833.697.9827

www.converge.design

P.O. Box 1273
Gainesville GA, 30503

Christopher Castle P.E., CSWE



Key Accomplishments:

- Developed replacement parts for various military aircraft from the F-16 to KC-135.
- Helped his customers amass over \$850M in revenue from his Product Development & Patent Filing efforts since 2004.
- One of the first engineers to incorporate carbon fiber materials into military aircraft flight surfaces.

- Founded Castle Consulting PLLC, the first “Project Based Training” engineering firm dedicated to SOLIDWORKS and Mastercam users
- Founded SolidBox, the first CAD/CAM-specific Hardware and IT Value Added Reseller.
- Recognized as one of the most knowledgeable FEA and CFD Experts in the CAD/CAM Industry.
- Registered Professional Engineer with 21 Years of Experience in the Industry.
- Commercial Pilot with Experience Developing STCs and Aftermarket Aircraft Equipment.
- SOLIDWORKS Elite Applications Engineer since 2007.

Expertise:

- Design for Manufacture
- SOLIDWORKS Simulation (CFD, FEA, Motion/Kinematics)
- Multibody Workflows
- Computer Hardware & IT for Engineering Groups (SolidBox)

Chad Garrish, CSWP, CSWS-D



Key Accomplishments:

- Founded EIS, a thriving engineering services firm that provides a turnkey lifecycle solution across multiple and diverse industries.
- Founded EpiGrid, THE pioneer and the only certified solution partner for Hosted/Cloud SOLIDWORKS solutions including PDM.
- Played a vital role in the design of several key products including the Thera-Heat®

- Heated Humidification System and Medfusion® 4000 Wireless Syringe Infusion Pump.
- Completed one of the first multi-site, geographically distributed PDM implementations.
- 6 patents spanning various industries including medical devices and industrial tools.

Expertise:

- Hosting and cloud infrastructure deployment
- PDM
- Plastic Component Design
- Design for Manufacture
- Computer Hardware (SolidBox)
- Medical devices
- Regulatory compliance

Oun Chau, CSWP, CSWS-D



Key Accomplishments:

- Implemented, maintained, and administered cloud-hosted PDM systems for many international companies such as Duracell, Oiles, Lyft, and TRI.
- Worked as part of an engineering team designing products now for sale from Southwire Company.
- Presented at the 2014 SW VAR Workshop

focused on how to leverage cloud hosting for PDM systems.

Expertise:

- PDM
- Mechanical Design
- 2D Drawings
- DriveWorks
- IT Support
- Software Development
- API Programming
- Virtual Machines
- Cloud Hosted Infrastructure

Chris Hoolihan, BSME, CSWP



Key Accomplishments:

- Worked closely with NASA engineers to design and calibrate satellite trajectory flight paths for low earth orbit (LEO).
- Designed and built a robotic testing platform for nuclear fusion experimentation at the National Ignition Facility.
- Passed the Professional Engineering (PE) licensure exam in Machine Design and Materials.

- Won 1st place and \$75k in a world-wide engineering competition for research and development.

Expertise:

- Mechanical Design
- SOLIDWORKS Simulation (CFD, FEA)
- SIMSOLID
- Reverse Engineering

Co-Owner

Co-Owner

Brad Hassell, BSME, CSWP



Key Accomplishments:

- 6+ years of industry experience as Custom Application Engineer for major anufacture.
- Invited speaker for company-wide.
- Engineering and Technology Symposium.
- Multi-Team/Multi-Site/Multi-Product collaboration leadership for top tier customer.
- Human Factor (Ergonomics) Research and Fluid Power Society Certified.

Expertise:

- Mechanical Design/Mashine Design/Integrated Systems (Mechatronics)
- Simulation (FEA for parts and assemblies)
- Design for Manufacture
- Lean/Kaizen Process (Design and Manufacture)
- SOLIDWORKS Electrical/Routings
- Large Assemblies
- 2D Drawings
- Design/Reusable Parts Libraries
- SOLIDWORKS Configurations
- Inventor
- SIMSOLID
- AutoCAD

Tanner Knight, CSWE, CSWS-D



Key Accomplishments:

- Developed the SolidBox-Tuned version of Windows 10 to work most effectively with SOLIDWORKS and 3D CAD/CAM.
- Collaborated with major Department of Defense contractors to develop a product development infrastructure that reduced product time-to-market by 25%.
- Collaborated with Scripps Research Institute

of Oceanography (UCSD) to develop a Virtual Desktop infrastructure that is accessible to the entire team, no matter where they are in the world.

Expertise:

- PDM
- Flatter Files
- Multibody Workflows
- EpiGrid

Phillip Lewis, CSWE, CSWS-D



Key Accomplishments:

- Part of 3-man team that created design for current Chick-Fil-A salad bowl.
- Developed new to industry manufacturing system for Chick-Fil-A sandwich bag design.
- Designed, prototyped and patented cooling system for beverages using SOLIDWORKS.

Expertise:

- PDM
- IT Support
- Virtual Cloud Infrastructures
- Industrial Design

Matthew Moeller, CSWP



Key Accomplishments:

- Designed, prototyped, and finished a patented DSRC Motorcycle Helmet for tying moto riders into a connected vehicle infrastructure.
- Spec'ed, designed, fabricated, finished and installed a patented car seat costume to give illusion of driverless vehicle; went viral.
- Designed an injection molded component

set to allow one camera model to be attached to any motorcycle and aimed in any direction.

- Designed and maintaining the brand identity of several companies from coffee to disc golf to beauty to engineering; photo/video/illustration/logo design/render/etc.

Expertise:

- Product Visualization for Marketing
- Products Finishing
- Traditional Prototyping
- Rapid Prototyping
- Surfacing

Matt Perez, CSWE



Key Accomplishments:

- Developed hundreds of hours of educational content teaching users around the world to model everything from biomedical implants to cars.
- Reverse engineered various hand-built models for clients including Hydronalix rescue boat hulls providing parametric models of hand-built components.

- Evaluated in-use electronics in the autonomous construction industry for thermal performance with CFD.
- Designed tools, implants, test and deployment fixtures for use in spinal surgery and nucleus replacement.

Expertise:

- Complex Surfacing
- Plastic Part Design
- CNC/CAM Programming
- Design for Manufacture

Kyle Ragsdale, CSSP



Key Accomplishments:

- SolidWorks 1000 Seat Club- Sales
- Named #1 Worldwide Enterprise Product Data Management Sales person 4 years in a row
- Large Enterprise Customers introduced/ provided PDM- Bally Tech, BE Meyers, Bruker, Covidien, First Solar, FujiFilm, Google, HAWS Corp, Hospira, IDEO, IGT, Intevac, Intuitive Surgical, Iris, Juniper Networks, Lawrence

- Livermore, Lensx Lasers, Level3, Medtronic, MicroMetl, Monterey Bay Aquarium, Newport, Thermo Fisher, Topcon Tierra, Varian Medical.
- Over 23 years Sales experience providing ERP, Design, Engineering, and SAAS solutions

Expertise:

- Sales
- SOLIDWORKS
- ERP
- PDM
- EpiGrid
- Computer Hardware (SolidBox)
- Industrial Design

Ben Rosow, EAE, BSAE, MSME



Key Accomplishments:

- Team member on design of new Laser fluid flow measurement system. Came up with method for detecting flow direction where previously none existed.
- Headed up team for New Product Development redesigning flagship food processing machinery. Earned 5 patents in the process.

- Assistant to technical director for major Military ship program. Oversaw development of corrective action software.
- Designed industrial products ranging from large scale molds to novel dump truck bodies

Expertise:

- Advanced Mechanical Design
- Sheet Metal/Weldments
- SOLIDWORKS Simulation (CFD, FEA, Motion/Kinematics)
- SOLIDWORKS Plastics and Mold Design
- SOLIDWORKS Routing

Joel Sears, CSWE



Key Accomplishments:

- Developed and integrated remote controlled robotic surveillance systems integrated with automated software that triggered live responses from guards and law enforcement.
- Reverse engineered two products for performance enhancements: ultralight backpacking stove that uses denatured alcohol and a mountain bike specialty tool RIMJIBBER.

Expertise:

- Computer Hardware (SolidBox)
- IT Support
- SOLIDWORKS Performance
- Fusion 360

Chris Smith, CSWE



Key Accomplishments:

- Developed and is the current administrator of SolidBox's quality control program.
- Maintains Converge's website and social media channels.

Expertise:

- Computer Hardware (SolidBox)
- IT Support
- Website Design
- Video Production
- Writing

Eric Spendlove, CSWE



Key Accomplishments:

- Former lead designer for Cirque du Soleil. Tasked with aerial acrobatic design, fall safety design, metal fabrication, and conceptualizing new ways to shock audiences.
- Designed, tested, and built robotic characters and gymnastic equipment for Disney Resorts.
- Worked closely with Bruce Springsteen's

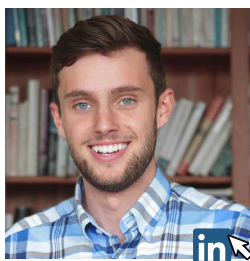
lighting designers for his 2016 tour. Designed and built multiple fixtures to inject new lighting technology for advanced stage illumination. My work gained national industry recognition and was covered in a five-page spread for Lighting & Sound America magazine.

- Involved in the creation of a minimally invasive, arthroscopically inserted knee replacement now being reviewed by FDA.

Expertise:

- Surfacing
- MBD
- AutoCAD
- SIMSOLID

Benjamin Weir, CSWP



Key Accomplishments:

- Was recognized by SOLIDWORKS for my CAD, subsequently being sponsored to fly out to SWW18 in Los Angeles.
- Acquired CSWP, Advanced Surfacing, Advanced Sheet Metal, and Advanced Drawing Tools in 2 months.
- Achieved 4.0 GPA in first and second year at University studying Creative Product Design BSc (graduation: 2020)

Expertise:

- Drawing/sketching
- Conceptual Designing
- SOLIDWORKS Mechanical Design
- SOLIDWORKS Surfacing
- Keyshot

Joey Wilson, CSWE, CSWS-D



Key Accomplishments:

- 20+ years of experience in mechanical design in a variety of disciplines.
- 20 years of experience using SOLIDWORKS in product development and manufacturing environments.
- 7 years of experience in the oil and gas industry designing everything from subsea umbilical control cables to ROV tooling to oil/water/gas separators.

Expertise:

- Automation Equipment
- Design for Manufacture
- Reverse Engineering
- Sheet Metal/Weldments
- API Programming

Customized Solutions for Any Business

We deliver Cloud-computing VDIs for SOLIDWORKS; scale users, scale capabilities, access from anywhere. SolidBox MCAD-specific hardware is also one of our pillar solutions. As Dell's Largest MCAD workstation reseller, we leverage SolidBox hardware for a hybrid approach, Cloud and On-Premise, and we will work with you to determine the right strategy.



Engineering Workstations, Virtual and On-Premise

Design and Engineering Services



Use our pool of licensed Professional Engineers and certified SOLIDWORKS Experts & Professionals with practical, real-world experience from the trenches to augment your projects on demand.

We are SOLIDWORKS experts with real-world experience.



SOLIDWORKS Sales and Support

PDM Implementation and CAD/PDM Administration



Our proven proprietary implementation approach provides engineering best practices and workflows in as little as a week, with immediate return on investment. And we will provide professional remote management services, both IT and application-specific, across the entire SOLIDWORKS product line.

Our approach to training is unique. Whenever possible, we will design your SOLIDWORKS training curriculum around your own models and challenges; what we call project-based training. We are also able to leverage our Cloud resources to provide a completely virtual training room experience.



Training